

TBD

TRIM BY DESIGN

DECORATIVE TRIM & ACCESSORIES

2022

METAL FINISHES



Code 01*/03/03N
Polished Brass - PVD
Polished Brass
Polished Brass
Uncoated
Price Group 2



Code 04
Satin Brass
Price Group 2



Code 06
Antique Brass
Price Group 3



Code 07
Brushed Bronze
Price Group 3



Code 08
Polished Copper
Price Group 3



Code 09
Antique Copper
Price Group 3



Code 10*
Aged Copper
(Tumbled Copper)
Price Group 3



Code 12*
Rustic Brass
Price Group 4



Code 14
Oil Rubbed Bronze
Price Group 2



Code 15
Polished Nickel
Price Group 2



Code 16
Pewter
(Antique Nickel)
Price Group 3



Code 17
Brushed Nickel
(Satin Nickel)
Price Group 2



Code 20
Stainless Steel
Price Group 2



Code 21*
Black Stainless
Price Group 4



Code 22*
Polished Gold -
PVD
Price Group 4



Code 23*
Satin Gold - PVD
Price Group 4



Code 26
Polished Chrome
Price Group 1



Code 27
Satin Chrome
Price Group 2



Code 40+
Sienna Bronze
(Venetian Bronze)
Price Group 3



Code 50
White
Price Group 2



Code 51
Almond
Price Group 2



Code 54
Black
(Gloss Black)
Price Group 2



Code 56
Matte Black
(Flat Black)
Price Group 2



Code 65
Biscuit
Price Group 2

* Verify first: not available on all products

**Living or Uncoated finishes are not warranted and available on selected items

+Venetian Bronze is a Trademark of Delta Faucet Company

Actual product finish may vary from finishes shown in the catalog and website

*Go to www.trimbydesign.com for a current list of available finishes on each product

FINISH DESCRIPTIONS

Code No.	Product Finishes	Price Group
26	Polished Chrome	1
01*	Polished Brass - PVD	2
03	Polished Brass Coated	2
03N**	Polished Brass Uncoated	2
04	Satin Brass	2
14	Oil Rubbed Bronze	2
15	Polished Nickel	2
17	Brushed Nickel (Satin Nickel)	2
20	Stainless Steel	2
27	Satin Chrome	2
50	White	2
51	Almond	2
54	Black (Gloss Black)	2
56	Matte Black (Flat Black)	2
65	Biscuit	2
06	Antique Brass	3
07	Brushed Bronze	3
08	Polished Copper	3
09	Antique Copper	3
10	Aged Copper	3
16	Pewter (Antique Nickel)	3
40+	Sienna Bronze (Venetian Bronze)	3
12*	Rustic Brass	4
21*	Black Stainless	4
22*	Polished Gold	4
23*	Satin Gold	4

* Verify first: not available on all products

**Living or Uncoated finishes are not warranted and available on selected items

+Venetian Bronze is a Trademark of Delta Faucet Company

Actual product finish may vary from finishes shown in the catalog and website

*Go to www.trimbydesign.com for a current list of available finishes on each product

Trim By Design

TERMS AND CONDITIONS

Minimum Order: Minimums apply where stated or \$35.00 net per invoice.

Order Placement: All orders must be submitted via e-mail sales@trimbydesign.com or fax 1-877-329-8746.

Pricing: All prices are listed in U.S. Currency. All prices, shipping, packaging or handling charges are subject to change without notice. All orders will be invoiced at prices prevailing at the time of the order. Publisher assumes no responsibility for typographical errors.

Product Changes: We reserve the right to discontinue, alter, modify, or redesign products and finishes without notice.

Claims: Upon delivery, if there is visible damage to the carton, claims against damaged and/or shortages must be made at the time of receipt against the carrier. Shortages, damaged merchandise, billing errors, etc., must be reported within 3 days of receipt of merchandise.

FREIGHT

All orders will be shipped prepaid and bill. Shipments are F.O.B. Commerce, CA. Full freight is allowed on ground shipments of \$1,000.00 net value when shipped to the customer's place of business within the continental U.S.A. Trim By Design reserves the right to ship by method of our choosing.

RETURN GOOD POLICY

All returns must be accompanied by a Trim By Design Return Goods Authorization number, issued by Trim By Design. Items returned without authorization will be disposed of without credit being issued.

- All return authorization requests must be made by e-mail rga@trimbydesign.com or fax 1-877-329-8746 within 90 days of the original invoice date.
- Trim By Design does not even exchange or swap merchandise.
- Merchandise must be new and saleable condition.
- All parts and / or components must be returned in order to accept returned merchandise.
- No returns on special orders or discontinued items.
- All returns must be made freight prepaid by sender and the sender must assume all responsibility for shipping. Trim By Design reserves the right to limit and/or refuse any returns at their discretion.

Trim By Design, Inc. shall not be held responsible for any liability associated with misprints, typographical errors or pricing discrepancies in this publication.

Trim By Design

TABLE OF CONTENTS

Terms & Conditions	C	Reverse Osmosis Air Gap	5
Warranty	81	Roman Tub Drain Top	42
Table of Contents	D	Shower Accessories	9
Air Gaps	1-2	Shower Arms	16-19
Bathtub Spouts	21-22	Shower Arms, Ceiling Mount	19
Bathtub Trim	23-25	Shower Heads	20
Bathtub Trim Kits	26-28	Shower Drain Trim	42-43
Bath Waste & Overflow (Brass)	29-33	Shower Drains	44-45
Bath Waste & Overflow (Plastic)	34-37	Sink Drain Accessories	53-56
Cable Operated Bath Waste	38-41	Sink Strainers, Bar Sink	10
Clean Out Covers	79	Sink Strainers, Kitchen	9-10
Faucet (Sink) Hole Cover	2	Sink / Lavatory Trim Kits*	73-75
Faucet Deck Plates	80	Sink P-Traps	57-58
Flanges, Shower Arm	15	Slip Joint Nuts	59
Flanges, Sink P-Trap	59-60	Bottle / Cylinder Trap	59
Flanges, Water Stops	66	Soap & Lotion Dispensers	6
Garbage Disposal Flange & Stoppers	7-8	Tank Levers	78-79
Garbage Disposal Air Switches	11-14	Tissue Holder	80
Lavatory Sink Drains	46-52	Toilet Supply Kits*	68-72
Lavatory Supply Kits*	75-77	Water Dispensers*	3-5
Log Lighter Trim	79	Water Stops, Angle*	61-63
Nipples, Brass	79	Water Stops, Straight*	63-66
Remodeling Plates	80	Water Supply Lines, Risers	67

***Lead Free Products Comply with NSF/ANSI 61-Annex G Standards**

PHONE: 1-888-TBD-TRIM (823-8746)

FAX: 1-877-FAX-TRIM (329-8746)

E-MAIL: sales@trimbydesign.com

Trim By Design



AIR GAP COMPLETE.

Requires 1-1/4 inch to 1-1/2 inch Mounting Hole
 Covers Air Gap Body Completely
 Durable Plastic Air Gap Body
 Solid Brass Cap and Trim Ring
 IAPMO / UPC Listed

TBD100

Group 1 - \$39
Group 2 - \$45
Group 3 - \$63
Group 4 - \$94



TRADITIONAL AIR GAP COMPLETE.

Requires 1-1/4 inch to 1-1/2 inch Mounting Hole
 Covers Air Gap Body Completely
 Durable Plastic Air Gap Body
 Solid Brass Cap and Trim Ring
 IAPMO / UPC Listed

TBD102

Group 1 - \$39
Group 2 - \$45
Group 3 - \$63
Group 4 - \$94



CONTEMPORARY AIR GAP COMPLETE.

Requires 1-1/4 inch to 1-1/2 inch Mounting Hole
 Covers Air Gap Body Completely
 Durable Plastic Air Gap Body
 Solid Brass Cap
 IAPMO / UPC Listed

TBD106

Group 1 - \$99
Group 2 - \$106
Group 3 - \$120
Group 4 - \$175



DUAL AIR GAP COMPLETE.

Requires 1-1/2 inch Mounting Hole
 Covers Air Gap Body Completely
 High Flow Plastic Air Gap Body Design
 Includes: (1) Each Adapter for RO Port or
 2nd Dishwasher
 Solid Brass Cap
 IAPMO / UPC Listed

TBD108

Group 1 - \$218
Group 2 - \$229
Group 3 - \$252
Group 4 - \$315

Trim By Design



DUAL AIR GAP COMPLETE.

Requires 1-1/2 inch Mounting Hole
Covers Air Gap Body Completely
High Flow Plastic Air Gap Body Design
Includes: (1) Each Adapter for RO Port or
2nd Dishwasher
Solid Brass Cap
IAPMO / UPC Listed

TBD109

Group 1 - \$218
Group 2 - \$229
Group 3 - \$252
Group 4 - \$315



AIR GAP COVER WITH TRIM RING.

Covers Air Gap Body Completely
Solid Brass Cap and Trim Ring

TBD101

Group 1 - \$37
Group 2 - \$43
Group 3 - \$61
Group 4 - \$92



TRADITIONAL AIR GAP COVER WITH TRIM RING.

Covers Air Gap Body Completely
Solid Brass Cap and Trim Ring

TBD103

Group 1 - \$37
Group 2 - \$43
Group 3 - \$61
Group 4 - \$92



2 INCH SINK HOLE COVER.

2 inch Diameter
2 inch Mounting Shank (Screw)
Covers Unused Sink Hole
Solid Brass top

TBD110

Group 1 - \$26
Group 2 - \$29
Group 3 - \$37
Group 4 - \$54

Trim By Design



**WATER DISPENSER FAUCET
WITH BRASS TIP AND HANDLE.**

Requires 1/2 inch to 1-1/2 inch Mounting Hole
8-1/4 inch Height
5 inch Spout Reach
3-1/4 inch Stainless Steel Inlet Shank
Color Matched Brass Tip and Handle
Cold Water Inlet Only
Lead Free Brass Construction

TBD1201C **Group 1** - \$130
Group 2 - \$156
Group 3 - \$225
Group 4 - \$299



**WATER DISPENSER FAUCET
WITH BRASS TIP AND HANDLE.**

Requires 1/2 inch to 1-1/2 inch Mounting Hole
8-1/4 inch Height
3 inch Spout Reach
3-1/4 inch Stainless Steel Inlet Shank
Color Matched Brass Tip and Handle
Cold Water Inlet Only
Lead Free Brass Construction

TBD1203C **Group 1** - \$135
Group 2 - \$161
Group 3 - \$230
Group 4 - \$304



**DELUXE LEVER HANDLE
WATER DISPENSER FAUCET.**

Requires 1/2 inch to 1-1/2 inch Mounting Hole
11-1/4 inch Height
4-1/2 inch Spout Reach
3-1/4 inch Stainless Steel Inlet Shank
1/4-Turn Ceramic Disc Cartridge
Cold Water Inlet Only
Lead Free Brass Construction

TBD121C **Group 1** - \$215
Group 2 - \$270
Group 3 - \$375
Group 4 - \$520



**DELUXE LEVER HANDLE
WATER DISPENSER FAUCET.**

Requires 1/2 inch to 1-1/2 inch Mounting Hole
9-1/2 inch Height
3-1/2 inch Spout Reach
3-1/4 inch Stainless Steel Inlet Shank
1/4-Turn Ceramic Disc Cartridge
Cold Water Inlet Only
Lead Free Brass Construction

TBD1211C **Group 1** - \$215
Group 2 - \$270
Group 3 - \$375
Group 4 - \$520

Trim By Design



**DELUXE CROSS HANDLE
WATER DISPENSER FAUCET.**

Requires 1/2 inch to 1-1/2 inch Mounting Hole
11-1/4 inch Height
4-1/2 inch Spout Reach
3-1/4 inch Stainless Steel Inlet Shank
1/4-Turn Ceramic Disc Cartridge
Cold Water Inlet Only
Lead Free Brass Construction

TBD122C **Group 1 - \$215**
Group 2 - \$270
Group 3 - \$375
Group 4 - \$520



**DELUXE LEVER HANDLE
WATER DISPENSER FAUCET.**

Requires 1/2 inch to 1-1/2 inch Mounting Hole
11 inch Height
5 inch Spout Reach
3-1/4 inch Stainless Steel Inlet Shank
1/4-Turn Ceramic Disc Cartridge
Cold Water Inlet Only
Lead Free Brass Construction

TBD124C **Group 1 - \$215**
Group 2 - \$270
Group 3 - \$375
Group 4 - \$520



**CONTEMPORARY WATER DISPENSER
FAUCET.**

Requires 1/2 inch to 1-1/2 inch Mounting Hole
11 inch Height
4-1/2 inch Spout Reach
3-1/4 inch Stainless Steel Inlet Shank
1/4-Turn Ceramic Disc Cartridge
Cold Water Inlet Only
Lead Free Brass Construction

TBD123C **Group 1 - \$265**
Group 2 - \$350
Group 3 - \$450
Group 4 - \$648



**CONTEMPORARY WATER DISPENSER
FAUCET.**

Requires 1/2 inch to 1-1/2 inch Mounting Hole
8-1/4 inch Height
3-1/2 inch Spout Reach
3-1/4 inch Stainless Steel Inlet Shank
1/4-Turn Ceramic Disc Cartridge
Cold Water Inlet Only
Lead Free Brass Construction

TBD1231C **Group 1 - \$265**
Group 2 - \$350
Group 3 - \$450
Group 4 - \$648

Trim By Design



**TRADITIONAL WATER DISPENSER
FAUCET WITH BRASS TIP AND HANDLE.**

Requires 1/2 inch to 1-1/2 inch Mounting Hole
 8-1/4 inch Height
 5 inch Spout Reach
 3-1/4 inch Stainless Steel Inlet Shank
 Color Matched Brass Tip and Handle
 Cold Water Inlet Only
 Lead Free Brass Construction

TBD1204C **Group 1 - \$135**
Group 2 - \$161
Group 3 - \$230
Group 4 - \$304



**TRADITIONAL WATER DISPENSER
FAUCET WITH BRASS TIP AND HANDLE.**

Requires 1/2 inch to 1-1/2 inch Mounting Hole
 8-1/4 inch Height
 3 inch Spout Reach
 3-1/4 inch Stainless Steel Inlet Shank
 Color Matched Brass Tip and Handle
 Cold Water Inlet Only
 Lead Free Brass Construction

TBD1202C **Group 1 - \$135**
Group 2 - \$161
Group 3 - \$230
Group 4 - \$304



WATER DISPENSER FAUCET.

Requires 1/2 inch to 1-1/2 inch Mounting Hole
 6-1/2 inch Height
 3 inch Spout Reach
 Cold Water Inlet Only
 Lead Free Brass Construction

TBD120C **Group 1 - \$115**
Group 2 - \$135
Group 3 - \$202
Group 4 - N/A



REVERSE OSMOSIS AIR GAP.

Requires 1-1/4 inch Mounting Hole
 Includes 6 ft. of 3/8 in. and 1/4 in. Poly Tube
 Mounting Hardware
 For All Trim By Design Water Dispensers
 Solid Brass Construction

TBD128 **Group 1 - \$85**
Group 2 - \$99
Group 3 - \$120
Group 4 - \$172

Trim By Design



SOAP AND LOTION DISPENSER.

Requires 1-1/4 inch to 1-1/2 inch Mounting Hole
 2-1/2 inch Spout Reach
 12.5 Ounce Bottle Capacity
 Refillable from Above Sink Deck
 Solid Brass Construction

TBD130

Group 1 - \$75
Group 2 - \$89
Group 3 - \$112
Group 4 - N/A



SOAP AND LOTION DISPENSER.

Requires 1-1/4 inch to 1-1/2 inch Mounting Hole
 3-3/4 inch Spout Reach
 12.5 Ounce Bottle Capacity
 Refillable from Above Sink Deck
 Solid Brass Construction

TBD131

Group 1 - \$99
Group 2 - \$139
Group 3 - \$155
Group 4 - \$223



SOAP AND LOTION DISPENSER.

Requires 1-1/4 inch to 1-1/2 inch Mounting Hole
 3-1/2 inch Spout Reach
 12.5 Ounce Bottle Capacity
 Refillable from Above Sink Deck
 Solid Brass Construction

TBD132

Group 1 - \$75
Group 2 - \$103
Group 3 - \$120
Group 4 - \$185



SOAP AND LOTION DISPENSER.

Requires 1-1/4 inch to 1-1/2 inch Mounting Hole
 3 inch Spout Reach
 12.5 Ounce Bottle Capacity
 Refillable from Above Sink Deck
 Solid Brass Construction

TBD133

Group 1 - \$75
Group 2 - \$103
Group 3 - \$120
Group 4 - \$185



SOAP AND LOTION DISPENSER.

Requires 1-1/4 inch to 1-1/2 inch Mounting Hole
 3-1/2 inch Spout Reach
 12.5 Ounce Bottle Capacity
 Refillable from Above Sink Deck
 Solid Brass Construction

TBD135

Group 1 - \$108
Group 2 - \$150
Group 3 - \$175
Group 4 - \$252

Trim By Design



GARBAGE DISPOSAL STOPPER.

Fits Model No. TBD140, TBD143, TBD144 and TBD145
Solid Brass Construction

TBD141 **Group 1 - \$40**
Group 2 - \$59
Group 3 - \$65
Group 4 - \$95



GARBAGE DISPOSAL FLANGE.

Fits Sinks with 3-1/2 inch Opening
Fits All In-Sink-Erator Models, Including Evolution Series
Solid Brass Construction

TBD140 **Group 1 - \$60**
Group 2 - \$74
Group 3 - \$80
Group 4 - \$125



GARBAGE DISPOSAL FLANGE AND STOPPER KIT.

Fits Sinks with 3-1/2 inch Opening
Fits All In-Sink-Erator Models, Including Evolution Series
Solid Brass Construction

TBD142 **Group 1 - \$100**
Group 2 - \$133
Group 3 - \$145
Group 4 - \$220



GARBAGE DISPOSAL FLANGE AND STRAINER STOPPER KIT.

Fits Sinks with 3-1/2 inch Opening
Fits All In-Sink-Erator Models, Including Evolution Series
Solid Brass Construction

TBD1422 **Group 1 - \$100**
Group 2 - \$133
Group 3 - \$145
Group 4 - \$220



EXTENDED GARBAGE DISPOSAL FLANGE.

Fits Sinks with 3-1/2 inch Opening
Fits All In-Sink-Erator Models, Including Evolution Series
For use with Stone, Fireclay and Farmhouse Sinks
Solid Brass Construction

TBD143 **Group 1 - \$75**
Group 2 - \$89
Group 3 - \$94
Group 4 - \$150



EXTENDED GARBAGE DISPOSAL FLANGE AND STOPPER KIT.

Fits Sinks with 3-1/2 inch Opening
Fits All In-Sink-Erator Models, Including Evolution Series
For use with Stone, Fireclay and Farmhouse Sinks
Solid Brass Construction

TBD1431 **Group 1 - \$115**
Group 2 - \$148
Group 3 - \$159
Group 4 - \$245

Trim By Design



EXTENDED GARBAGE DISPOSAL FLANGE AND STRAINER STOPPER KIT.
 Fits Sinks with 3-1/2 inch Opening
 Fits All In-Sink-Erator Models, Including Evolution Series
 For use with Stone, Fireclay and Farmhouse Sinks
 Solid Brass Construction

TBD1432 **Group 1 - \$115**
Group 2 - \$148
Group 3 - \$159
Group 4 - \$245



GARBAGE DISPOSAL FLANGE AND STOPPER KIT.
 Fits Sinks with 3-1/2 inch Opening
 3-Bolt Mount Sink Flange for Waste King
 Solid Brass Construction

TBD145 **Group 1 - \$100**
Group 2 - \$133
Group 3 - \$145
Group 4 - \$220



GARBAGE DISPOSAL FLANGE AND STRAINER STOPPER KIT.
 Fits Sinks with 3-1/2 inch Opening
 3-Bolt Mount Sink Flange for Waste King
 Solid Brass Construction

TBD1452 **Group 1 - \$100**
Group 2 - \$133
Group 3 - \$145
Group 4 - \$220



EXTENDED GARBAGE DISPOSAL FLANGE.
 Fits Sinks with 3-1/2 inch Opening
 3-Bolt Mount Sink Flange for Waste King
 For use with Stone, Fireclay and Farmhouse Sinks
 Solid Brass Construction

TBD144 **Group 1 - \$75**
Group 2 - \$89
Group 3 - \$94
Group 4 - \$150



EXTENDED GARBAGE DISPOSAL FLANGE AND STOPPER KIT.
 Fits Sinks with 3-1/2 inch Opening
 3-Bolt Mount Sink Flange for Waste King
 For use with Stone, Fireclay and Farmhouse Sinks
 Solid Brass Construction

TBD1441 **Group 1 - \$115**
Group 2 - \$148
Group 3 - \$159
Group 4 - \$245



EXTENDED GARBAGE DISPOSAL FLANGE AND STRAINER STOPPER KIT.
 Fits Sinks with 3-1/2 inch Opening
 3-Bolt Mount Sink Flange for Waste King
 For use with Stone, Fireclay and Farmhouse Sinks
 Solid Brass Construction

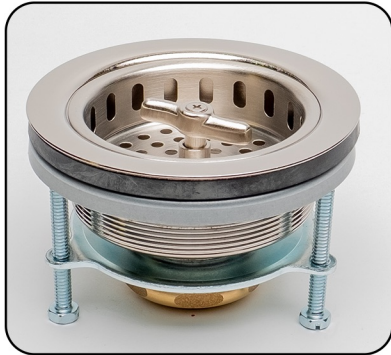
TBD1442 **Group 1 - \$115**
Group 2 - \$148
Group 3 - \$159
Group 4 - \$245

Trim By Design



**WING NUT LOCKING STYLE
KITCHEN STRAINER.**
Fits Sinks with 3-1/2 inch Opening
Brass Nuts
Solid Brass Construction

TBD155 **Group 1** - \$125
Group 2 - \$146
Group 3 - \$156
Group 4 - \$195



**WING NUT LOCKING STYLE
KITCHEN STRAINER.**
Fits Sinks with 3-1/2 inch Opening
Sure Seal Mounting System
Solid Brass Construction

TBD155MK **Group 1** - \$140
Group 2 - \$161
Group 3 - \$171
Group 4 - \$210



POST STYLE KITCHEN STRAINER.
Fits Sinks with 3-1/2 inch Opening
Brass Nuts
Solid Brass Construction

TBD160 **Group 1** - \$99
Group 2 - \$129
Group 3 - \$149
Group 4 - \$187



POST STYLE KITCHEN STRAINER.
Fits Sinks with 3-1/2 inch Opening
Sure Seal Mounting System
Solid Brass Construction

TBD160MK **Group 1** - \$114
Group 2 - \$144
Group 3 - \$164
Group 4 - \$202



POP-UP STYLE KITCHEN STRAINER.
Fits Sinks with 3-1/2 inch Opening
Touch Seal Stopper
Brass Cartridge Mechanism

TBD166 **Group 1** - \$145
Group 2 - \$166
Group 3 - \$186
Group 4 - \$225

Trim By Design



**POST STYLE KITCHEN STRAINER WITH
SPRING LOADED CENTER POST.**

Fits Sinks with 3-1/2 inch Opening
ABS Outer Body

Optional Part # TBD163EXTBOLT

TBD163

Group 1 - \$75
Group 2 - \$125
Group 3 - \$148
Group 4 - \$213



**EXTENSION BOLT FOR
TBD163 AND TBD172.**

Extends Strainer Up To 2 inches (For Thick Sinks)

TBD163EXTBOLT

\$15



BAR / PREP SINK BASKET STRAINER.

Fits Sinks with 2 inch Opening
Removable Basket for Easy Cleaning
Solid Brass Construction

TBD170

Group 1 - \$59
Group 2 - \$79
Group 3 - \$95
Group 4 - \$136



JUNIOR DUO BASKET STRAINER.

Fits Sinks with 2 inch Opening
Removable Basket for Easy Cleaning
Brass Nuts
Solid Brass Construction

TBD171

Group 1 - \$59
Group 2 - \$79
Group 3 - \$95
Group 4 - \$136



BAR / PREP SINK STRAINER.

Fits Sinks with 2 inch Opening
Feature Spring Loaded Center Post for Positive Seal
ABS Outer Body

Allows Water to be Sealed in Sink

Optional Part # TBD163EXTBOLT

TBD172

Group 1 - \$55
Group 2 - \$75
Group 3 - \$99
Group 4 - \$135

Trim By Design



**EASY TOUCH AIR ACTIVATED
GARBAGE DISPOSAL KIT.**
Requires 1-1/4 inch to 1-3/8 inch Mounting Hole
Brass Button and Flange Trim
Single Outlet Power Module
Includes 1/4 in. X 5 ft. Vinyl Flexible Air Tube
120 VAC U.L. Listed

TBD151 **Group 1 - \$128**
Group 2 - \$144
Group 3 - \$161
Group 4 - \$184



**EASY TOUCH AIR ACTIVATED
GARBAGE DISPOSAL KIT.**
Requires 1-1/4 inch to 1-3/8 inch Mounting Hole
Brass Button and Flange Trim
Dual Outlet Power Module
Includes 1/4 in. X 5 ft. Vinyl Flexible Air Tube
120 VAC U.L. Listed

TBD152 **Group 1 - \$154**
Group 2 - \$170
Group 3 - \$187
Group 4 - \$210



**EASY TOUCH AIR ACTIVATED
GARBAGE DISPOSAL KIT.**
Requires 1-1/4 inch to 1-3/8 inch Mounting Hole
Brass Button and Flange Trim
Dual Outlet Power Module
Includes 1/4 in. X 5 ft. Vinyl Flexible Air Tube
120 VAC U.L. Listed

TBD153 **Group 1 - \$185**
Group 2 - \$195
Group 3 - \$212
Group 4 - \$241



**EASY TOUCH AIR ACTIVATED
GARBAGE DISPOSAL KIT.**
Requires 1-1/4 inch to 1-3/8 inch Mounting Hole
Brass Raised Button and Flange Trim
Dual Outlet Power Module
Includes 1/4 in. X 5 ft. Vinyl Flexible Air Tube
120 VAC U.L. Listed

TBD152R **Group 1 - \$190**
Group 2 - \$200
Group 3 - \$217
Group 4 - \$247

Trim By Design



**EASY TOUCH AIR ACTIVATED
GARBAGE DISPOSAL KIT.**

Requires 1-1/4 inch to 1-3/8 inch Mounting Hole
Brass Button and Flange Trim
Dual Outlet Power Module
Includes 1/4 in. X 5 ft. Vinyl Flexible Air Tube
120 VAC U.L. Listed

TBD154

Group 1 - \$185
Group 2 - \$195
Group 3 - \$212
Group 4 - \$241



**EASY TOUCH AIR ACTIVATED
GARBAGE DISPOSAL KIT.**

Requires 1-1/4 inch to 1-3/8 inch Mounting Hole
Brass Raised Button and Flange Trim
Dual Outlet Power Module
Includes 1/4 in. X 5 ft. Vinyl Flexible Air Tube
120 VAC U.L. Listed

TBD154R

Group 1 - \$190
Group 2 - \$200
Group 3 - \$217
Group 4 - \$247



**SINGLE OUTLET GARBAGE DISPOSAL
AIR SWITCH POWER MODULE.**

Includes 1/4 in. X 5 ft. Vinyl Flexible Air Tube
120 VAC U.L. Listed
Works with Most Air Switch Buttons

TBD151LT

\$75



**DUAL OUTLET GARBAGE DISPOSAL
AIR SWITCH POWER MODULE.**

Includes 1/4 in. X 5 ft. Vinyl Flexible Air Tube
120 VAC U.L. Listed
Works with Most Air Switch Buttons

TBD152LT

\$110

Trim By Design



EASY TOUCH AIR ACTIVATED REPLACEMENT SWITCH.
 Requires 1-1/4 inch to 1-3/8 inch Mounting Hole
 2 inch Transmitter Assembly
 Brass Button and Flange Trim
 Works with Most Air Switch Controllers

TBD1521 **Group 1 - \$59**
Group 2 - \$75
Group 3 - \$92
Group 4 - \$115



EASY TOUCH RAISED REPLACEMENT SWITCH.
 Requires 1-1/4 inch to 1-3/8 inch Mounting Hole
 2 inch Transmitter Assembly
 Brass Raised Button and Flange Trim
 Works with Most Air Switch Controllers

TBD1522 **Group 1 - \$95**
Group 2 - \$105
Group 3 - \$122
Group 4 - \$152



EASY TOUCH AIR ACTIVATED REPLACEMENT SWITCH.
 Requires 1-1/4 inch to 1-3/8 inch Mounting Hole
 2 inch Transmitter Assembly
 Brass Button and Flange Trim
 Works with Most Air Switch Controllers

TBD1531 **Group 1 - \$90**
Group 2 - \$100
Group 3 - \$117
Group 4 - \$146



EASY TOUCH AIR ACTIVATED REPLACEMENT SWITCH.
 Requires 1-1/4 inch to 1-3/8 inch Mounting Hole
 2 inch Transmitter Assembly
 Brass Button and Flange Trim
 Works with Most Air Switch Controllers

TBD1541 **Group 1 - \$90**
Group 2 - \$100
Group 3 - \$117
Group 4 - \$146



EASY TOUCH RAISED AIR ACTIVATED REPLACEMENT SWITCH.
 Requires 1-1/4 inch to 1-3/8 inch Mounting Hole
 2 inch Transmitter Assembly
 Brass Raised Button and Flange Trim
 Works with Most Air Switch Controllers

TBD1542 **Group 1 - \$95**
Group 2 - \$105
Group 3 - \$122
Group 4 - \$152

Trim By Design



**EASY TOUCH AIR ACTIVATED
REPLACEMENT SWITCH.**

Requires 1-1/4 inch to 1-3/8 inch Mounting Hole
3 inch Transmitter Assembly
Brass Button and Flange Trim
Works with Most Air Switch Controllers

TBD1521L **Group 1 - \$74**
Group 2 - \$90
Group 3 - \$107
Group 4 - \$130



**EASY TOUCH RAISED AIR ACTIVATED
REPLACEMENT SWITCH.**

Requires 1-1/4 inch to 1-3/8 inch Mounting Hole
3 inch Transmitter Assembly
Brass Raised Button and Flange Trim
Works with Most Air Switch Controllers

TBD1522L **Group 1 - \$110**
Group 2 - \$120
Group 3 - \$137
Group 4 - \$167



**EASY TOUCH AIR ACTIVATED
REPLACEMENT SWITCH.**

Requires 1-1/4 inch to 1-3/8 inch Mounting Hole
3 inch Transmitter Assembly
Brass Button and Flange Trim
Works with Most Air Switch Controllers

TBD1531L **Group 1 - \$105**
Group 2 - \$115
Group 3 - \$132
Group 4 - \$161



**EASY TOUCH AIR ACTIVATED
REPLACEMENT SWITCH.**

Requires 1-1/4 inch to 1-3/8 inch Mounting Hole
3 inch Transmitter Assembly
Brass Button and Flange Trim
Works with Most Air Switch Controllers

TBD1541L **Group 1 - \$105**
Group 2 - \$115
Group 3 - \$132
Group 4 - \$161



**EASY TOUCH RAISED AIR ACTIVATED
REPLACEMENT SWITCH.**

Requires 1-1/4 inch to 1-3/8 inch Mounting Hole
3 inch Transmitter Assembly
Brass Raised Button and Flange Trim
Works with Most Air Switch Controllers

TBD1542L **Group 1 - \$110**
Group 2 - \$120
Group 3 - \$137
Group 4 - \$167

Trim By Design



1/2 INCH FLAT PATTERN SURE GRIP FLANGE.
 7/8 in. I.D. X 2-5/8 in. O.D. X 5/16 in. HT.
 Solid Brass Construction

TBD200
Group 1 - \$18
Group 2 - \$23
Group 3 - \$28
Group 4 - \$35



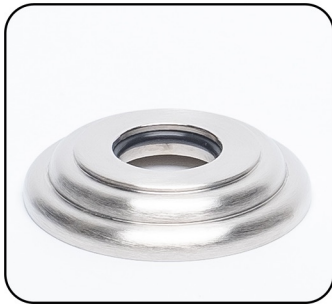
1/2 INCH SHOWER ARM FLANGE.
 13/16 in. I.D. X 2-3/8 in. O.D. X 1/4 in. HT.
 Held In Position By O-Ring
 Solid Brass Construction

TBD2011
Group 1 - \$39
Group 2 - \$45
Group 3 - \$58
Group 4 - \$72



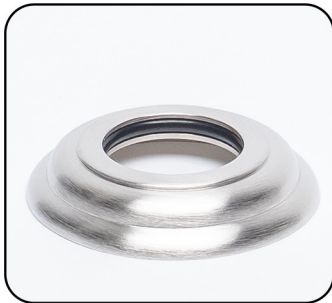
1/2 INCH SHOWER ARM FLANGE.
 13/16 in. I.D. X 2-3/16 in. O.D. X 11/16 in. HT.
 Held In Position By Set Screw
 Solid Brass Construction

TBD202
Group 1 - \$39
Group 2 - \$45
Group 3 - \$58
Group 4 - \$72



1/2 INCH SHOWER ARM FLANGE.
 13/16 in. I.D. X 2-3/16 in. O.D. X 3/8 in. HT.
 Held In Position By O-Ring
 Solid Brass Construction

TBD203
Group 1 - \$39
Group 2 - \$45
Group 3 - \$58
Group 4 - \$72



3/4 INCH SHOWER ARM FLANGE.
 1 in. I.D. X 2-3/16 in. O.D. X 3/8 in. HT.
 Held in Position By O-Ring
 Solid Brass Construction

TBD204
Group 1 - \$39
Group 2 - \$45
Group 3 - \$58
Group 4 - \$72



1/2 INCH SQUARE SHOWER ARM FLANGE.
 13/16 in. I.D. X 2-1/16 in. O.D. X 9/32 in. HT.
 Held In Position By O-Ring
 Solid Brass Construction

TBD2020
Group 1 - \$61
Group 2 - \$66
Group 3 - \$70
Group 4 - \$87

Trim By Design



6 INCH SHOWER ARM EXTENDER.
1/2 in. Female Nut X 1/2 in. Male Nipple
Solid Brass Construction

TBD208
Group 1 - \$50
Group 2 - \$79
Group 3 - \$99
Group 4 - N/A



6 INCH SHOWER ARM.
1/2 inch Male Thread Connections
Solid Brass Construction

TBD210
Group 1 - \$29
Group 2 - \$55
Group 3 - \$69
Group 4 - \$86



6 INCH SHOWER ARM AND FLANGE.
1/2 inch Male Thread Connections
Solid Brass Construction

TBD2101
Group 1 - \$47
Group 2 - \$78
Group 3 - \$97
Group 4 - \$121



8 INCH SHOWER ARM.
1/2 inch Male Thread Connections
Solid Brass Construction

TBD211
Group 1 - \$48
Group 2 - \$66
Group 3 - \$90
Group 4 - \$114



8 INCH SHOWER ARM AND FLANGE.
1/2 inch Male Thread Connections
Solid Brass Construction

TBD2111
Group 1 - \$66
Group 2 - \$89
Group 3 - \$118
Group 4 - \$149

Trim By Design



10 INCH SHOWER ARM.
1/2 inch Male Thread Connections
Solid Brass Construction

TBD212
Group 1 - \$78
Group 2 - \$88
Group 3 - \$106
Group 4 - \$132



10 INCH SHOWER ARM AND FLANGE.
1/2 inch Male Thread Connections
Solid Brass Construction

TBD2121
Group 1 - \$96
Group 2 - \$111
Group 3 - \$134
Group 4 - \$167



12 INCH SHOWER ARM.
1/2 inch Male Thread Connections
Solid Brass Construction

TBD214
Group 1 - \$96
Group 2 - \$117
Group 3 - \$134
Group 4 - \$167



12 INCH SHOWER ARM AND FLANGE.
1/2 inch Male Thread Connections
Solid Brass Construction

TBD2141
Group 1 - \$114
Group 2 - \$140
Group 3 - \$162
Group 4 - \$202



12 INCH RIGHT ANGLE SHOWER ARM AND FLANGE.
1/2 inch Male Thread Connections
5 inch Arm Drop
Solid Brass Construction

TBD216
Group 1 - \$98
Group 2 - \$122
Group 3 - \$138
Group 4 - \$175



12 INCH RIGHT ANGLE SHOWER ARM.
1/2 inch Male Thread Connections
5 inch Arm Drop
Solid Brass Construction

TBD2161
Group 1 - \$80
Group 2 - \$99
Group 3 - \$110
Group 4 - \$140

Trim By Design



18 INCH RIGHT ANGLE SHOWER ARM AND FLANGE.
 1/2 inch Male Thread Connections
 5 inch Arm Drop
 Solid Brass Construction

TBD217

Group 1 - \$119
Group 2 - \$139
Group 3 - \$187
Group 4 - \$234



18 INCH RIGHT ANGLE SHOWER ARM.
 1/2 inch Male Thread Connections
 5 inch Arm Drop
 Solid Brass Construction

TBD2171

Group 1 - \$101
Group 2 - \$116
Group 3 - \$159
Group 4 - \$199



24 INCH RIGHT ANGLE SHOWER ARM AND FLANGE.
 1/2 inch Male Thread Connections
 5 inch Arm Drop
 Solid Brass Construction

TBD218

Group 1 - \$177
Group 2 - \$212
Group 3 - \$257
Group 4 - \$321



24 INCH RIGHT ANGLE SHOWER ARM.
 1/2 inch Male Thread Connections
 5 inch Arm Drop
 Solid Brass Construction

TBD2181

Group 1 - \$159
Group 2 - \$189
Group 3 - \$229
Group 4 - \$286

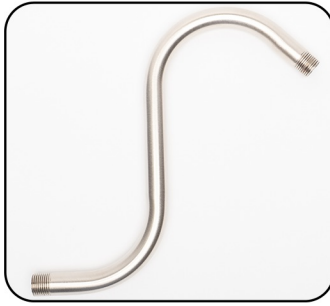


**18 INCH SHOWER ARM
 CEILING / WALL SUPPORT.**
 18 inch Rod Can be Cut to Length
 Swivels for Easy Adjustment
 Provides Added Stability
 Solid Brass Construction

TBD219

Group 1 - \$99
Group 2 - \$189
Group 3 - \$210
Group 4 - N/A

Trim By Design



S-STYLE SHOWER ARM.

1/2 inch Male Thread Connections
 Raises Showerhead 10 inches
 Solid Brass Construction

TBD220

Group 1 - \$95
Group 2 - \$125
Group 3 - \$175
Group 4 - \$218



S-STYLE SHOWER ARM AND FLANGE.

1/2 inch Male Thread Connections
 Raises Showerhead 10 inches
 Solid Brass Construction

TBD2201

Group 1 - \$113
Group 2 - \$148
Group 3 - \$203
Group 4 - \$253



1/2 INCH I.P.S. X 12 INCH CEILING MOUNT SHOWER ARM AND FLANGE.

1/2 inch Male Thread Connections
 Solid Brass Construction

TBD230

Group 1 - \$152
Group 2 - \$169
Group 3 - \$197
Group 4 - \$247

CUSTOM LENGTHS AVAILABLE PLEASE CALL



45 DEGREE SHOWER ELBOW.

1/2 in. Female Inlet X 1/2 in. Male Outlet
 Solid Brass Construction

TBD232

Group 1 - \$45
Group 2 - \$69
Group 3 - \$85
Group 4 - \$106



SHOWER VOLUME CONTROL.

1/2 in. Female Inlet X 1/2 in. Male Outlet
 Fits Between Shower Head and Shower Arm
 Solid Brass Construction
 Not a Positive Shut-Off

TBD233

Group 1 - \$45
Group 2 - \$69
Group 3 - \$85
Group 4 - \$106



SHOWER VACUUM BREAKER.

Fits 1/2 inch I.P.S Male Shower Arm
 Connects to a Shower Head or Hose
 Atmospheric Design
 Solid Brass Construction

TBD234

Group 1 - \$45
Group 2 - \$69
Group 3 - \$85
Group 4 - \$106

Trim By Design



6 JET SHOWER HEAD.
2-3/4 inch Face
1/2 inch Female Inlet
1.75 GPM Complies with ASME A112.18.1
Solid Brass Construction

TBD235
Group 1 - \$165
Group 2 - \$199
Group 3 - \$310
Group 4 - \$390



8 JET SHOWER HEAD.
3-1/2 inch Face
1/2 inch Female Inlet
1.75 GPM Complies with ASME A112.18.1
Solid Brass Construction

TBD236
Group 1 - \$299
Group 2 - \$375
Group 3 - \$481
Group 4 - \$599

Trim By Design



**5 INCH TUB SPOUT AND
DECORATIVE TRIM RING.**
5 inch Overall Length
Threads onto a 1/2 inch I.P.S. Nipple
Front End Threaded Connection
Solid Brass Construction

TBD255 **Group 1 - \$120**
Group 2 - \$150
Group 3 - \$225
Group 4 - \$280



**7-1/4 INCH TUB SPOUT AND
DECORATIVE TRIM RING.**
7-1/4 inch Overall Length
Threads onto a 1/2 inch I.P.S. Nipple
Front End Threaded Connection
Premium Metal Construction

TBD256 **Group 1 - \$75**
Group 2 - \$109
Group 3 - N/A
Group 4 - N/A



**5-1/2 INCH DIVERTER TUB SPOUT AND
DECORATIVE TRIM RING.**
5-1/2 inch Overall Length
Threads onto a 1/2 inch I.P.S. Nipple
Front End Threaded Connection
Solid Brass Construction

TBD260 **Group 1 - \$145**
Group 2 - \$179
Group 3 - \$245
Group 4 - \$306



**5-1/2 INCH DIVERTER TUB SPOUT AND
DECORATIVE TRIM RING.**
5-1/2 inch Overall Length
Threads onto a 1/2 inch I.P.S. Nipple
Front End Threaded Connection
Premium Metal Construction

TBD260Z **Group 1 - \$45**
Group 2 - \$85
Group 3 - N/A
Group 4 - N/A



**5-1/2 INCH DIVERTER TUB SPOUT AND
DECORATIVE TRIM RING.**
5-1/2 inch Overall Length
Slips onto a 1/2 inch Copper Pipe
Rear End Connection
Solid Brass Construction

TBD261 **Group 1 - \$160**
Group 2 - \$194
Group 3 - \$260
Group 4 - \$321

Trim By Design



**5-1/2 INCH DIVERTER TUB SPOUT AND
DECORATIVE TRIM RING.**

5-1/2 inch Overall Length
Slips onto a 1/2 inch Copper Pipe
Rear End Connection
Premium Metal Construction

TBD261Z

Group 1 - \$60
Group 2 - \$100
Group 3 - N/A
Group 4 - N/A



**7-1/4 INCH DIVERTER TUB SPOUT AND
DECORATIVE TRIM RING.**

7-1/4 inch Overall Length
Threads onto a 1/2 inch I.P.S. Nipple
Front End Threaded Connection
Premium Metal Construction

TBD263

Group 1 - \$80
Group 2 - \$119
Group 3 - N/A
Group 4 - N/A



**7-1/4 INCH DIVERTER TUB SPOUT AND
DECORATIVE TRIM RING.**

7-1/4 inch Overall Length
Slips onto a 1/2 inch Copper Pipe
Rear End Connection
Premium Metal Construction

TBD264

Group 1 - \$95
Group 2 - \$134
Group 3 - N/A
Group 4 - N/A



**8-1/2 INCH DIVERTER TUB SPOUT AND
DECORATIVE TRIM RING.**

8-1/2 inch Overall Length
Threads onto a 1/2 inch or 3/4 inch I.P.S. Nipple
Includes 3/4 in. X 1/2 in. Reducing Bushing
Rear End Threaded Connection
Solid Brass Construction

TBD266

Group 1 - \$269
Group 2 - \$339
Group 3 - \$389
Group 4 - \$449

Trim By Design



1-HOLE FACEPLATE AND SCREW.
 3 inch Diameter
 One (1) 1/4-20 X 2 inch Long Brass Screw
 Solid Brass Construction

TBD300 **Group 1 - \$39**
Group 2 - \$49
Group 3 - \$59
Group 4 - \$74



2-HOLE FACEPLATE AND SCREWS.
 3 inch Diameter
 Two (2) 1/4-20 X 2 inch Long Brass Screws
 Solid Brass Construction

TBD301 **Group 1 - \$49**
Group 2 - \$59
Group 3 - \$69
Group 4 - \$84



TRIP LEVER FACEPLATE AND SCREWS.
 3 inch Diameter
 Two (2) 1/4-20 X 2 inch Long Brass Screws
 Solid Brass Construction

TBD302 **Group 1 - \$51**
Group 2 - \$64
Group 3 - \$75
Group 4 - \$99



VINTAGE STYLE FACEPLATE AND SCREW.
 3 inch Diameter
 One (1) 1/4-20 X 2 inch Long Brass Screw
 Solid Brass Construction

TBD303 **Group 1 - \$39**
Group 2 - \$49
Group 3 - \$59
Group 4 - \$74



NO-HOLE FACEPLATE KIT.
 3 inch Diameter
 Two (2) 1/4-20 X 2 inch Long Brass Screws
 Includes Mounting Ring, Screws and Bracket
 Solid Brass Construction

TBD304 **Group 1 - \$69**
Group 2 - \$84
Group 3 - \$94
Group 4 - \$129

Trim By Design



DOMESTRAINER COVER AND SCREW.
 2-7/8 inch Diameter Cover
 For Trip Lever Bath Drains
 Solid Brass Construction

TBD305 **Group 1 - \$32**
Group 2 - \$40
Group 3 - \$51
Group 4 - \$63



1-1/2 INCH COARSE THREAD DOME STRAINER BATHTUB DRAIN PLUG.
 2-7/8 inch Diameter Cover
 For Trip Lever Bath Drains
 Solid Brass Construction

TBD306 **Group 1 - \$50**
Group 2 - \$58
Group 3 - \$69
Group 4 - \$81



1-1/2 INCH COARSE THREAD LIFT & TURN BATHTUB DRAIN PLUG.
 Solid Brass Construction

TBD307 **Group 1 - \$56**
Group 2 - \$77
Group 3 - \$94
Group 4 - \$118



1-1/2 INCH COARSE THREAD TOE OPERATED BATHTUB DRAIN PLUG.
 Solid Brass Stopper (Cap)
 Solid Brass Construction

TBD308 **Group 1 - \$71**
Group 2 - \$91
Group 3 - \$104
Group 4 - \$129



KOHLER TYPE BRASS BUSHING.
 2 in. Fine O.D. Thread X
 1-1/2 in. Coarse I.D. Thread
 Fits Older Kohler Bath Tub Drains
 Solid Brass Construction

TBD3001BBK \$19

Trim By Design



**1-1/4 INCH FINE THREAD TOE OPERATED
BATHTUB DRAIN PLUG.**

Solid Brass Flush Stopper
Includes 1-1/4 in. Fine Thread X
1-1/2 in. Coarse Thread Brass Bushing
Solid Brass Construction

TBD3008 **Group 1 - \$81**
Group 2 - \$101
Group 3 - \$114
Group 4 - \$139



**1-1/4 INCH FINE THREAD TOE OPERATED
BATHTUB DRAIN PLUG.**

3 inch Brass Dome Stopper
Includes 1-1/4 in. Fine Thread X
1-1/2 in. Coarse Thread Brass Bushing
Solid Brass Construction

TBD3088 **Group 1 - \$81**
Group 2 - \$101
Group 3 - \$114
Group 4 - \$139



**1-1/2 INCH COARSE THREAD TOE OPERATED
INTEGRATED OVERFLOW BATHTUB DRAIN PLUG.**

2-3/4 inch Brass Dome Stopper
2-1/2 inch Length
For Tubs with Integrated Overflow Channels
Solid Brass Construction

TBD3888 **Group 1 - \$99**
Group 2 - \$129
Group 3 - \$150
Group 4 - \$230



**1-1/2 INCH COARSE THREAD TOE OPERATED
EXTENDED BATHTUB DRAIN PLUG.**

2-3/4 inch Brass Dome Stopper
2-1/2 inch Length
For Thick Tubs without Overflow Channels
Solid Brass Construction

TBD3889 **Group 1 - \$99**
Group 2 - \$129
Group 3 - \$159
Group 4 - \$230

Trim By Design



**DOMESTRAINER COVER
AND TRIP LEVER FACEPLATE KIT.**
Solid Brass Construction

TBD3052 **Group 1 - \$83**
Group 2 - \$104
Group 3 - \$126
Group 4 - \$162



**1-1/4 INCH FINE THREAD DOMESTRAINER
BATHTUB PLUG AND TRIP LEVER FACEPLATE KIT.**
Includes 1-1/4 in. Fine Thread X
1-1/2 in. Coarse Thread Brass Bushing
Solid Brass Construction

TBD3052C **Group 1 - \$109**
Group 2 - \$130
Group 3 - \$152
Group 4 - \$188



**1-1/2 INCH COARSE THREAD LIFT & TURN
BATHTUB DRAIN PLUG AND 1-HOLE FACEPLATE KIT.**
Solid Brass Construction

TBD3070 **Group 1 - \$95**
Group 2 - \$126
Group 3 - \$153
Group 4 - \$192



**1-1/4 INCH FINE THREAD LIFT & TURN
BATHTUB DRAIN PLUG AND 1-HOLE FACEPLATE KIT.**
Includes Converter Bracket and 1-1/4 in. Fine Thread X
1-1/2 in. Coarse Thread Brass Bushing
Solid Brass Construction

TBD3070C **Group 1 - \$109**
Group 2 - \$140
Group 3 - \$167
Group 4 - \$206



**1-1/2 INCH COARSE THREAD LIFT & TURN
BATHTUB DRAIN PLUG AND 2-HOLE FACEPLATE KIT.**
Solid Brass Construction

TBD3071 **Group 1 - \$105**
Group 2 - \$136
Group 3 - \$163
Group 4 - \$202

Trim By Design



**1-1/4 INCH FINE THREAD LIFT & TURN
BATHTUB DRAIN PLUG AND 2-HOLE FACEPLATE KIT.**

Includes 1-1/4 in. Fine Thread X
1-1/2 in. Coarse Thread Brass Bushing
Solid Brass Construction

TBD3071C **Group 1 - \$116**
Group 2 - \$147
Group 3 - \$174
Group 4 - \$213



**1-1/2 INCH COARSE THREAD TOE OPERATED
BATHTUB DRAIN PLUG AND 1-HOLE FACEPLATE KIT.**

Solid Brass Construction

TBD3080 **Group 1 - \$110**
Group 2 - \$140
Group 3 - \$163
Group 4 - \$203



**1-1/4 INCH FINE THREAD TOE OPERATED
BATHTUB DRAIN PLUG AND 1-HOLE FACEPLATE KIT.**

Includes Converter Bracket and 1-1/4 in. Fine Thread X
1-1/2 in. Coarse Thread Brass Bushing
Solid Brass Construction

TBD3080C **Group 1 - \$124**
Group 2 - \$154
Group 3 - \$177
Group 4 - \$217



**1-1/2 INCH COARSE THREAD TOE OPERATED
BATHTUB DRAIN PLUG AND 2-HOLE FACEPLATE KIT.**

Solid Brass Construction

TBD3081 **Group 1 - \$120**
Group 2 - \$150
Group 3 - \$173
Group 4 - \$213



**1-1/4 INCH FINE THREAD TOE OPERATED
BATHTUB DRAIN PLUG AND 2-HOLE FACEPLATE KIT.**

Includes 1-1/4 in. Fine Thread X
1-1/2 in. Coarse Thread Brass Bushing
Solid Brass Construction

TBD3081C **Group 1 - \$131**
Group 2 - \$161
Group 3 - \$184
Group 4 - \$224

Trim By Design



**1-1/4 INCH FINE THREAD TOE OPERATED
BATHTUB DRAIN PLUG AND NO-HOLE FACEPLATE KIT.**

3 inch Toe Operated Brass Dome Stopper
Includes 1-1/4 in. Fine Thread X
1-1/2 in. Coarse Thread Brass Bushing,
Mounting Ring, Screws and Bracket
Solid Brass Construction

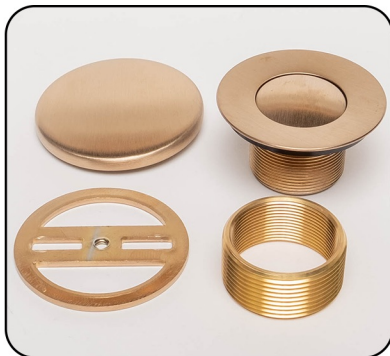
TBD3082C **Group 1** - \$150
Group 2 - \$185
Group 3 - \$208
Group 4 - \$268



**1-1/4 INCH FINE THREAD TOE OPERATED
BATHTUB DRAIN PLUG AND 1-HOLE FACEPLATE KIT.**

3 inch Toe Operated Brass Dome Stopper
Includes Converter Bracket and 1-1/4 in. Fine Thread X
1-1/2 in. Coarse Thread Brass Bushing
Solid Brass Construction

TBD3083C **Group 1** - \$123
Group 2 - \$153
Group 3 - \$176
Group 4 - \$216



**1-1/4 INCH FINE THREAD FLUSH TOE OPERATED
BATHTUB DRAIN PLUG AND NO-HOLE FACEPLATE KIT.**

Flush Toe Operated Brass Stopper
Includes 1-1/4 in. Fine Thread X
1-1/2 in. Coarse Thread Brass Bushing,
Mounting Ring, Screws and Bracket
Solid Brass Construction

TBD3084C **Group 1** - \$150
Group 2 - \$185
Group 3 - \$208
Group 4 - \$268



**1-1/4 INCH FINE THREAD FLUSH TOE OPERATED
BATHTUB DRAIN PLUG AND 1-HOLE FACEPLATE KIT.**

Flush Toe Operated Brass Stopper
Includes Converter Bracket and 1-1/4 in. Fine Thread X
1-1/2 in. Coarse Thread Brass Bushing
Solid Brass Construction

TBD3085C **Group 1** - \$123
Group 2 - \$153
Group 3 - \$176
Group 4 - \$216



BRASS HALF FERRULE.
For Brass Waste and Overflow Solder Installations
Solid Brass Construction

TBD3000BHF \$5.00

Trim By Design



FLUSH TOE OPERATED WASTE AND OVERFLOW WITH NO-HOLE FACEPLATE.

No-Hole (Without Holes) Brass Overflow Faceplate
 Flush Stopper Toe Operated Brass Bathtub Drain Plug
 22 inch Maximum Vertical Adjustment
 10 inch Maximum Horizontal Adjustment
 17-Gauge Solid Brass Construction
 Tube (Pipe) May be Cut to Size at Installation
 Solid Brass Trim

TBD313

Group 1 - \$325
Group 2 - \$389
Group 3 - \$486
Group 4 - \$560

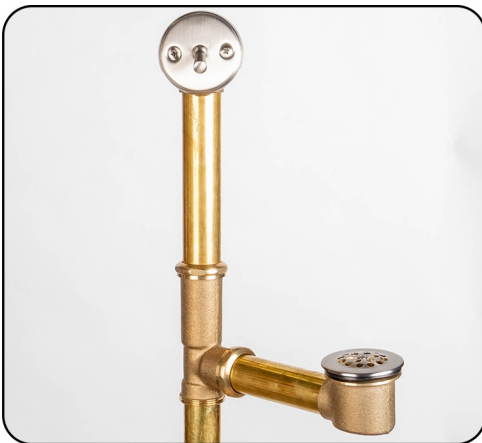


TRIP LEVER WASTE AND OVERFLOW WITH DOME STRAINER.

Trip Lever Brass Overflow Faceplate
 Dome Strainer Brass Bathtub Drain Plug
 10 inch - 14 inch Maximum Vertical Adjustment
 7 inch Maximum Horizontal Adjustment
 17-Gauge Solid Brass Construction
 Solid Brass Trim

TBD315

Group 1 - \$259
Group 2 - \$323
Group 3 - \$401
Group 4 - \$499

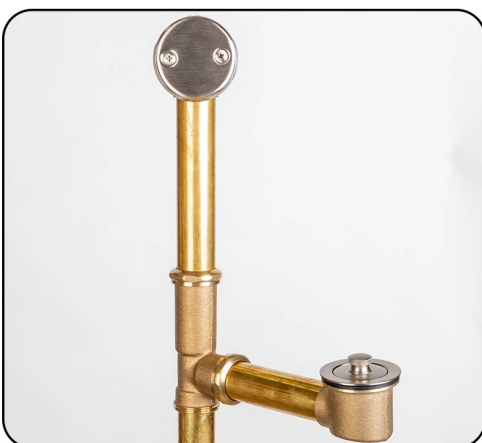


TRIP LEVER WASTE AND OVERFLOW WITH DOME STRAINER.

Trip Lever Brass Overflow Faceplate
 Dome Strainer Brass Bathtub Drain Plug
 16 inch - 22 inch Maximum Vertical Adjustment
 10 inch Maximum Horizontal Adjustment
 17-Gauge Solid Brass Construction
 Solid Brass Trim

TBD317

Group 1 - \$299
Group 2 - \$363
Group 3 - \$441
Group 4 - \$549



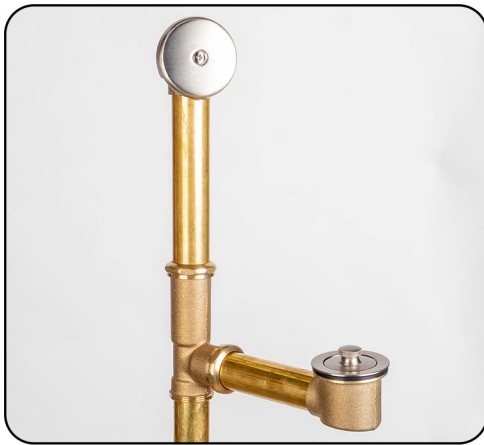
LIFT & TURN STYLE WASTE AND OVERFLOW WITH 2-HOLE FACEPLATE.

2-Hole Brass Overflow Faceplate
 Lift & Turn Brass Bathtub Drain Plug
 22 inch Maximum Vertical Adjustment
 10 inch Maximum Horizontal Adjustment
 17-Gauge Solid Brass Construction
 Tube (Pipe) May be Cut to Size at Installation
 Solid Brass Trim

TBD322

Group 1 - \$325
Group 2 - \$406
Group 3 - \$466
Group 4 - \$540

Trim By Design



LIFT & TURN STYLE WASTE AND OVERFLOW WITH 1-HOLE FACEPLATE.

1-Hole Brass Overflow Faceplate
Lift & Turn Brass Bathtub Drain Plug
22 inch Maximum Vertical Adjustment
10 inch Maximum Horizontal Adjustment
17-Gauge Solid Brass Construction
Tube (Pipe) May be Cut to Size at Installation
Solid Brass Trim

TBD3221 **Group 1 - \$325**
Group 2 - \$406
Group 3 - \$469
Group 4 - \$540



TOE OPERATED WASTE AND OVERFLOW WITH 2-HOLE FACEPLATE.

2-Hole Brass Overflow Faceplate
Toe Operated Brass Bathtub Drain Plug
3 inch Brass Dome Stopper
22 inch Maximum Vertical Adjustment
10 inch Maximum Horizontal Adjustment
17-Gauge Solid Brass Construction
Tube (Pipe) May be Cut to Size at Installation
Solid Brass Trim

TBD326 **Group 1 - \$335**
Group 2 - \$416
Group 3 - \$479
Group 4 - \$550



TOE OPERATED WASTE AND OVERFLOW WITH 1-HOLE FACEPLATE.

1-Hole Brass Overflow Faceplate
Toe Operated Brass Bathtub Drain Plug
3 inch Brass Dome Stopper
22 inch Maximum Vertical Adjustment
10 inch Maximum Horizontal Adjustment
17-Gauge Solid Brass Construction
Tube (Pipe) May be Cut to Size at Installation
Solid Brass Trim

TBD3261 **Group 1 - \$335**
Group 2 - \$416
Group 3 - \$479
Group 4 - \$550



FLUSH TOE OPERATED WASTE AND OVERFLOW WITH NO-HOLE FACEPLATE.

No-Hole (Without Holes) Brass Overflow Faceplate
Flush Stopper Toe Operated Brass Bathtub Drain Plug
22 inch Maximum Vertical Adjustment
10 inch Maximum Horizontal Adjustment
17-Gauge Solid Brass Construction
Tube (Pipe) May be Cut to Size at Installation
Solid Brass Trim

TBD3131 **Group 1 - \$585**
Group 2 - \$720
Group 3 - \$820
Group 4 - \$1005

COMPLETELY PLATED FOR ABOVE-THE-FLOOR AND FREESTANDING BATHTUB INSTALLATIONS

Trim By Design



TOE OPERATED WASTE AND OVERFLOW WITH NO-HOLE FACEPLATE.

No-Hole (Without Holes) Brass Overflow Faceplate
 Toe Operated Brass Bathtub Drain Plug
 3 inch Brass Dome Stopper
 22 inch Maximum Vertical Adjustment
 10 inch Maximum Horizontal Adjustment
 17-Gauge Solid Brass Construction
 Tube (Pipe) May be Cut to Size at Installation
 Solid Brass Trim

COMPLETELY PLATED FOR ABOVE-THE-FLOOR AND FREESTANDING BATHTUB INSTALLATIONS

TBD314 **Group 1 - \$585**
Group 2 - \$720
Group 3 - \$820
Group 4 - \$1005



TRIP LEVER WASTE AND OVERFLOW WITH DOME STRAINER.

Trip Lever Brass Overflow Faceplate
 Dome Strainer Brass Bathtub Drain Plug
 10 inch - 14 inch Maximum Vertical Adjustment
 7 inch Maximum Horizontal Adjustment
 17-Gauge Solid Brass Construction
 Solid Brass Trim

COMPLETELY PLATED FOR ABOVE-THE-FLOOR AND FREESTANDING BATHTUB INSTALLATIONS

TBD316 **Group 1 - \$510**
Group 2 - \$627
Group 3 - \$783
Group 4 - \$978



TRIP LEVER WASTE AND OVERFLOW WITH DOME STRAINER.

Trip Lever Brass Overflow Faceplate
 Dome Strainer Brass Bathtub Drain Plug
 16 inch - 22 inch Maximum Vertical Adjustment
 10 inch Maximum Horizontal Adjustment
 17-Gauge Solid Brass Construction
 Solid Brass Trim

COMPLETELY PLATED FOR ABOVE-THE-FLOOR AND FREESTANDING BATHTUB INSTALLATIONS

TBD318 **Group 1 - \$550**
Group 2 - \$667
Group 3 - \$823
Group 4 - \$1018



LIFT & TURN STYLE WASTE AND OVERFLOW WITH 2-HOLE FACEPLATE.

2-Hole Brass Overflow Faceplate
 Lift & Turn Brass Bathtub Drain Plug
 22 inch Maximum Vertical Adjustment
 10 inch Maximum Horizontal Adjustment
 17-Gauge Solid Brass Construction
 Tube (Pipe) May be Cut to Size at Installation
 Solid Brass Trim

COMPLETELY PLATED FOR ABOVE-THE-FLOOR AND FREESTANDING BATHTUB INSTALLATIONS

TBD323 **Group 1 - \$525**
Group 2 - \$650
Group 3 - \$750
Group 4 - \$935

Trim By Design



LIFT & TURN STYLE WASTE AND OVERFLOW WITH 1-HOLE FACEPLATE.

TBD3231

- Group 1** - \$525
- Group 2** - \$650
- Group 3** - \$750
- Group 4** - \$935

1-Hole Brass Overflow Faceplate
 Lift & Turn Brass Bathtub Drain Plug
 22 inch Maximum Vertical Adjustment
 10 inch Maximum Horizontal Adjustment
 17-Gauge Solid Brass Construction
 Tube (Pipe) May be Cut to Size at Installation
 Solid Brass Trim

COMPLETELY PLATED FOR ABOVE-THE-FLOOR AND FREESTANDING BATHTUB INSTALLATIONS



LIFT & TURN STYLE WASTE AND OVERFLOW WITH VINTAGE STYLE FACEPLATE.

TBD325

- Group 1** - \$525
- Group 2** - \$650
- Group 3** - \$750
- Group 4** - \$935

Vintage (Daisy) Style Brass Overflow Faceplate
 Lift & Turn Brass Bathtub Drain Plug
 22 inch Maximum Vertical Adjustment
 10 inch Maximum Horizontal Adjustment
 17-Gauge Solid Brass Construction
 Tube (Pipe) May be Cut to Size at Installation
 Solid Brass Trim

COMPLETELY PLATED FOR ABOVE-THE-FLOOR AND FREESTANDING BATHTUB INSTALLATIONS



TOE OPERATED WASTE AND OVERFLOW WITH 1-HOLE FACEPLATE.

TBD3271

- Group 1** - \$535
- Group 2** - \$660
- Group 3** - \$760
- Group 4** - \$945

1-Hole Brass Overflow Faceplate
 Toe Operated Brass Bathtub Drain Plug
 3 inch Brass Dome Stopper
 22 inch Maximum Vertical Adjustment
 10 inch Maximum Horizontal Adjustment
 17-Gauge Solid Brass Construction
 Tube (Pipe) May be Cut to Size at Installation
 Solid Brass Trim

COMPLETELY PLATED FOR ABOVE-THE-FLOOR AND FREESTANDING BATHTUB INSTALLATIONS



TOE OPERATED WASTE AND OVERFLOW WITH VINTAGE STYLE FACEPLATE.

TBD328

- Group 1** - \$535
- Group 2** - \$660
- Group 3** - \$760
- Group 4** - \$945

Vintage (Daisy) Style Brass Overflow Faceplate
 Toe Operated Brass Bathtub Drain Plug
 3 inch Brass Dome Stopper
 22 inch Maximum Vertical Adjustment
 10 inch Maximum Horizontal Adjustment
 17-Gauge Solid Brass Construction
 Tube (Pipe) May be Cut to Size at Installation
 Solid Brass Trim

COMPLETELY PLATED FOR ABOVE-THE-FLOOR AND FREESTANDING BATHTUB INSTALLATIONS

Trim By Design



PIVOTING TOE OPERATED WASTE AND OVERFLOW WITH 1-HOLE FACEPLATE.

TBD3141 **Group 1 - \$750**
Group 2 - \$832
Group 3 - \$979
Group 4 - \$1224

Pivoting Head (Adjustable)
 1-Hole Brass Overflow Faceplate
 Toe Operated Brass Bathtub Drain Plug
 3 inch Brass Dome Stopper
 24 inch Maximum Vertical Adjustment
 24 inch Maximum Horizontal Adjustment
 17-Gauge Solid Brass Construction
 Tube (Pipe) May be Cut to Size at Installation
 Solid Brass Trim

COMPLETELY PLATED FOR ABOVE-THE-FLOOR AND FREESTANDING BATHTUB INSTALLATIONS



PIVOTING SUB-FLOOR BATHTUB WASTE AND OVERFLOW LESS TRIM.

TBD327 **Group 1 - \$365**
Group 2 - \$440
Group 3 - \$509
Group 4 - \$636

Pivoting Head (Adjustable)
 24 inch Maximum Vertical Adjustment
 Compatible with TBD300 or TBD303 Overflow Faceplates
 17-Gauge Solid Brass Construction
 Tube (Pipe) May be Cut to Size at Installation

COMPLETELY PLATED FOR ABOVE-THE-FLOOR AND FREESTANDING BATHTUB INSTALLATIONS



PIVOTING 1-HOLE WASTE AND OVERFLOW LESS TRIM.

TBD3251LT **Group 1 - \$690**
Group 2 - \$750
Group 3 - \$820
Group 4 - \$1025

Pivoting Head (Adjustable)
 24 inch Maximum Vertical Adjustment
 24 inch Maximum Horizontal Adjustment
 Compatible with any TBD 1-Hole Bathtub Trim Kit
 17-Gauge Solid Brass Construction
 Tube (Pipe) May be Cut to Size at Installation

COMPLETELY PLATED FOR ABOVE-THE-FLOOR AND FREESTANDING BATHTUB INSTALLATIONS



PIVOTING 2-HOLE WASTE AND OVERFLOW LESS TRIM.

TBD3252LT **Group 1 - \$690**
Group 2 - \$750
Group 3 - \$820
Group 4 - \$1025

Pivoting Head (Adjustable)
 24 inch Maximum Vertical Adjustment
 24 inch Maximum Horizontal Adjustment
 Compatible with any TBD 2-Hole Bathtub Trim Kit
 17-Gauge Solid Brass Construction
 Tube (Pipe) May be Cut to Size at Installation

COMPLETELY PLATED FOR ABOVE-THE-FLOOR AND FREESTANDING BATHTUB INSTALLATIONS

Trim By Design



TOE OPERATED WASTE AND OVERFLOW WITH 2-HOLE FACEPLATE.

2-Hole Brass Overflow Faceplate
 Toe Operated Brass Bathtub Drain Plug
 14 inch Maximum Vertical Adjustment
 8 inch Maximum Horizontal Adjustment
 1-1/2 inch Schedule 40 ABS Plastic Body
 Tube (Pipe) May be Extended (Replaced) for Custom Installation
 Tube (Pipe) May be Cut to Size at Installation
 Solid Brass Trim

TBD330A **Group 1** - \$160
 Group 2 - \$190
 Group 3 - \$240
 Group 4 - \$312



TOE OPERATED WASTE AND OVERFLOW WITH 1-HOLE FACEPLATE.

1-Hole Brass Overflow Faceplate
 Toe Operated Brass Bathtub Drain Plug
 14 inch Maximum Vertical Adjustment
 8 inch Maximum Horizontal Adjustment
 1-1/2 inch Schedule 40 ABS Plastic Body
 Tube (Pipe) May be Extended (Replaced) for Custom Installation
 Tube (Pipe) May be Cut to Size at Installation
 Solid Brass Trim

TBD3301A **Group 1** - \$160
 Group 2 - \$190
 Group 3 - \$240
 Group 4 - \$312



TOE OPERATED WASTE AND OVERFLOW WITH 2-HOLE FACEPLATE.

2-Hole Brass Overflow Faceplate
 Toe Operated Brass Bathtub Drain Plug
 14 inch Maximum Vertical Adjustment
 8 inch Maximum Horizontal Adjustment
 1-1/2 inch Schedule 40 PVC Plastic Body
 Tube (Pipe) May be Extended (Replaced) for Custom Installation
 Tube (Pipe) May be Cut to Size at Installation
 Solid Brass Trim

TBD330P **Group 1** - \$160
 Group 2 - \$190
 Group 3 - \$240
 Group 4 - \$312



TOE OPERATED WASTE AND OVERFLOW WITH 1-HOLE FACEPLATE.

1-Hole Brass Overflow Faceplate
 Toe Operated Brass Bathtub Drain Plug
 14 inch Maximum Vertical Adjustment
 8 inch Maximum Horizontal Adjustment
 1-1/2 inch Schedule 40 PVC Plastic Body
 Tube (Pipe) May be Extended (Replaced) for Custom Installation
 Tube (Pipe) May be Cut to Size at Installation
 Solid Brass Trim

TBD3301P **Group 1** - \$160
 Group 2 - \$190
 Group 3 - \$240
 Group 4 - \$312

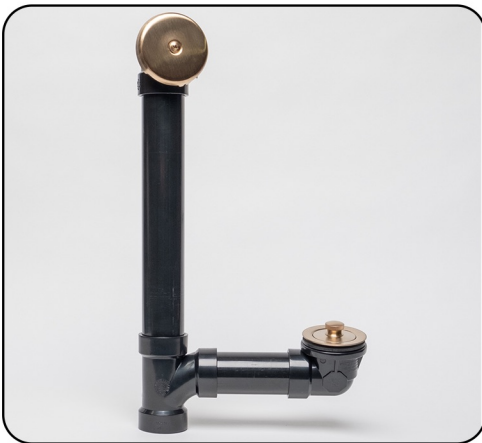
Trim By Design



LIFT & TURN WASTE AND OVERFLOW WITH 2-HOLE FACEPLATE.

2-Hole Brass Overflow Faceplate
 Lift & Turn Brass Bathtub Drain Plug
 14 inch Maximum Vertical Adjustment
 8 inch Maximum Horizontal Adjustment
 1-1/2 inch Schedule 40 ABS Plastic Body
 Tube (Pipe) May be Extended (Replaced) for Custom Installation
 Tube (Pipe) May be Cut to Size at Installation
 Solid Brass Trim

TBD331A **Group 1** - \$160
Group 2 - \$190
Group 3 - \$240
Group 4 - \$312



LIFT & TURN WASTE AND OVERFLOW WITH 1-HOLE FACEPLATE.

1-Hole Brass Overflow Faceplate
 Lift & Turn Brass Bathtub Drain Plug
 14 inch Maximum Vertical Adjustment
 8 inch Maximum Horizontal Adjustment
 1-1/2 inch Schedule 40 ABS Plastic Body
 Tube (Pipe) May be Extended (Replaced) for Custom Installation
 Tube (Pipe) May be Cut to Size at Installation
 Solid Brass Trim

TBD3311A **Group 1** - \$160
Group 2 - \$190
Group 3 - \$240
Group 4 - \$312



LIFT & TURN WASTE AND OVERFLOW WITH 2-HOLE FACEPLATE.

2-Hole Brass Overflow Faceplate
 Lift & Turn Brass Bathtub Drain Plug
 14 inch Maximum Vertical Adjustment
 8 inch Maximum Horizontal Adjustment
 1-1/2 inch Schedule 40 PVC Plastic Body
 Tube (Pipe) May be Extended (Replaced) for Custom Installation
 Tube (Pipe) May be Cut to Size at Installation
 Solid Brass Trim

TBD331P **Group 1** - \$160
Group 2 - \$190
Group 3 - \$240
Group 4 - \$312



LIFT & TURN WASTE AND OVERFLOW WITH 1-HOLE FACEPLATE.

1-Hole Brass Overflow Faceplate
 Lift & Turn Brass Bathtub Drain Plug
 14 inch Maximum Vertical Adjustment
 8 inch Maximum Horizontal Adjustment
 1-1/2 inch Schedule 40 PVC Plastic Body
 Tube (Pipe) May be Extended (Replaced) for Custom Installation
 Tube (Pipe) May be Cut to Size at Installation
 Solid Brass Trim

TBD3311P **Group 1** - \$160
Group 2 - \$190
Group 3 - \$240
Group 4 - \$312

Trim By Design



TOE OPERATED WASTE AND OVERFLOW WITH 2-HOLE FACEPLATE.

2-Hole Brass Overflow Faceplate
 Flush Stopper Toe Operated Brass Bathtub Drain Plug
 14 inch Maximum Vertical Adjustment
 8 inch Maximum Horizontal Adjustment
 1-1/2 inch Schedule 40 ABS Plastic Body
 Tube (Pipe) May be Extended (Replaced) for Custom Installation
 Tube (Pipe) May be Cut to Size at Installation
 Solid Brass Trim

TBD332A **Group 1** - \$180
Group 2 - \$210
Group 3 - \$260
Group 4 - \$332



TOE OPERATED WASTE AND OVERFLOW WITH 1-HOLE FACEPLATE.

1-Hole Brass Overflow Faceplate
 Flush Stopper Toe Operated Brass Bathtub Drain Plug
 14 inch Maximum Vertical Adjustment
 8 inch Maximum Horizontal Adjustment
 1-1/2 inch Schedule 40 ABS Plastic Body
 Tube (Pipe) May be Extended (Replaced) for Custom Installation
 Tube (Pipe) May be Cut to Size at Installation
 Solid Brass Trim

TBD3321A **Group 1** - \$180
Group 2 - \$210
Group 3 - \$260
Group 4 - \$332



TOE OPERATED WASTE AND OVERFLOW WITH 2-HOLE FACEPLATE.

2-Hole Brass Overflow Faceplate
 Flush Stopper Toe Operated Brass Bathtub Drain Plug
 14 inch Maximum Vertical Adjustment
 8 inch Maximum Horizontal Adjustment
 1-1/2 inch Schedule 40 PVC Plastic Body
 Tube (Pipe) May be Extended (Replaced) for Custom Installation
 Tube (Pipe) May be Cut to Size at Installation
 Solid Brass Trim

TBD332P **Group 1** - \$180
Group 2 - \$210
Group 3 - \$260
Group 4 - \$332



TOE OPERATED WASTE AND OVERFLOW WITH 1-HOLE FACEPLATE.

1-Hole Brass Overflow Faceplate
 Flush Stopper Toe Operated Brass Bathtub Drain Plug
 14 inch Maximum Vertical Adjustment
 8 inch Maximum Horizontal Adjustment
 1-1/2 inch Schedule 40 PVC Plastic Body
 Tube (Pipe) May be Extended (Replaced) for Custom Installation
 Tube (Pipe) May be Cut to Size at Installation
 Solid Brass Trim

TBD3321P **Group 1** - \$180
Group 2 - \$210
Group 3 - \$260
Group 4 - \$332

Trim By Design



TOE OPERATED WASTE AND OVERFLOW WITH 2-HOLE FACEPLATE.

2-Hole Brass Overflow Faceplate
 Toe Operated Brass Bathtub Drain Plug
 3 inch Brass Dome Stopper
 14 inch Maximum Vertical Adjustment
 8 inch Maximum Horizontal Adjustment
 1-1/2 inch Schedule 40 ABS Plastic Body
 Tube (Pipe) May be Extended (Replaced) for Custom Installation
 Tube (Pipe) May be Cut to Size at Installation
 Solid Brass Trim

TBD333A **Group 1** - \$180
 Group 2 - \$210
 Group 3 - \$260
 Group 4 - \$332



TOE OPERATED WASTE AND OVERFLOW WITH 1-HOLE FACEPLATE.

1-Hole Brass Overflow Faceplate
 Toe Operated Brass Bathtub Drain Plug
 3 inch Brass Dome Stopper
 14 inch Maximum Vertical Adjustment
 8 inch Maximum Horizontal Adjustment
 1-1/2 inch Schedule 40 ABS Plastic Body
 Tube (Pipe) May be Extended (Replaced) for Custom Installation
 Tube (Pipe) May be Cut to Size at Installation
 Solid Brass Trim

TBD3331A **Group 1** - \$180
 Group 2 - \$210
 Group 3 - \$260
 Group 4 - \$332



TOE OPERATED WASTE AND OVERFLOW WITH 2-HOLE FACEPLATE.

2-Hole Brass Overflow Faceplate
 Toe Operated Brass Bathtub Drain Plug
 3 inch Brass Dome Stopper
 14 inch Maximum Vertical Adjustment
 8 inch Maximum Horizontal Adjustment
 1-1/2 inch Schedule 40 PVC Plastic Body
 Tube (Pipe) May be Extended (Replaced) for Custom Installation
 Tube (Pipe) May be Cut to Size at Installation
 Solid Brass Trim

TBD333P **Group 1** - \$180
 Group 2 - \$210
 Group 3 - \$260
 Group 4 - \$332



TOE OPERATED WASTE AND OVERFLOW WITH 1-HOLE FACEPLATE.

1-Hole Brass Overflow Faceplate
 Toe Operated Brass Bathtub Drain Plug
 3 inch Brass Dome Stopper
 14 inch Maximum Vertical Adjustment
 8 inch Maximum Horizontal Adjustment
 1-1/2 inch Schedule 40 PVC Plastic Body
 Tube (Pipe) May be Extended (Replaced) for Custom Installation
 Tube (Pipe) May be Cut to Size at Installation
 Solid Brass Trim

TBD3331P **Group 1** - \$180
 Group 2 - \$210
 Group 3 - \$260
 Group 4 - \$332

Trim By Design



**1-1/2 INCH ABS CABLE OPERATED
WASTE AND OVERFLOW DRAIN.**

1-1/2 inch Schedule 40 ABS (Pipe not included)
Fits Maximum of 22 inch Depth for Baths and Whirlpools
Pivoting Head (Adjustable)
Solid Brass Trim
IAPMO / UPC Listed

TBD335A22 **Group 1** - \$239
Group 2 - \$275
Group 3 - \$299
Group 4 - \$374



**1-1/2 INCH ABS CABLE OPERATED
WASTE AND OVERFLOW DRAIN.**

1-1/2 inch Schedule 40 ABS (Pipe not included)
Fits Maximum of 22 inch Depth for Baths and Whirlpools
Extended Stem and Nut for Tubs up to 5/8 inch Thick
Pivoting Head (Adjustable)
Solid Brass Trim
IAPMO / UPC Listed

TBD335A22EXT **Group 1** - \$314
Group 2 - \$350
Group 3 - \$374
Group 4 - \$449



**1-1/2 INCH ABS CABLE OPERATED
WASTE AND OVERFLOW DRAIN.**

1-1/2 inch Schedule 40 ABS (Pipe not included)
Fits Maximum of 29 inch Depth for Baths and Whirlpools
Pivoting Head (Adjustable)
Solid Brass Trim
IAPMO / UPC Listed

TBD335A29 **Group 1** - \$269
Group 2 - \$305
Group 3 - \$329
Group 4 - \$404



**1-1/2 INCH ABS CABLE OPERATED
WASTE AND OVERFLOW DRAIN.**

1-1/2 inch Schedule 40 ABS (Pipe not included)
Fits Maximum of 29 inch Depth for Baths and Whirlpools
Extended Stem and Nut for Tubs up to 5/8 inch Thick
Pivoting Head (Adjustable)
Solid Brass Trim
IAPMO / UPC Listed

TBD335A29EXT **Group 1** - \$344
Group 2 - \$380
Group 3 - \$404
Group 4 - \$479



**1-1/2 INCH PVC CABLE OPERATED
WASTE AND OVERFLOW DRAIN.**

1-1/2 inch Schedule 40 PVC (Pipe not included)
Fits Maximum of 22 inch Depth for Baths and Whirlpools
Pivoting Head (Adjustable)
Solid Brass Trim
IAPMO / UPC Listed

TBD335P22 **Group 1** \$239
Group 2 \$275
Group 3 \$299
Group 4 \$374

Trim By Design



**1-1/2 INCH PVC CABLE OPERATED
WASTE AND OVERFLOW DRAIN.**

1-1/2 inch Schedule 40 PVC (Pipe not included)
Fits Maximum of 22 inch Depth for Baths and Whirlpools
Extended Stem and Nut for Tubs up to 5/8 inch Thick
Pivoting Head (Adjustable)
Solid Brass Trim
IAPMO / UPC Listed

TBD335P22EXT Group 1 - \$314
Group 2 - \$350
Group 3 - \$374
Group 4 - \$449



**1-1/2 INCH PVC CABLE OPERATED
WASTE AND OVERFLOW DRAIN.**

1-1/2 inch Schedule 40 PVC (Pipe not included)
Fits Maximum of 29 inch Depth for Baths and Whirlpools
Pivoting Head (Adjustable)
Solid Brass Trim
IAPMO / UPC Listed

TBD335P29 Group 1 - \$269
Group 2 - \$305
Group 3 - \$329
Group 4 - \$404



**1-1/2 INCH PVC CABLE OPERATED
WASTE AND OVERFLOW DRAIN.**

1-1/2 inch Schedule 40 PVC (Pipe not included)
Fits Maximum of 29 inch Depth for Baths and Whirlpools
Extended Stem and Nut for Tubs up to 5/8 inch Thick
Pivoting Head (Adjustable)
Solid Brass Trim
IAPMO / UPC Listed

TBD335P29EXT Group 1 - \$344
Group 2 - \$380
Group 3 - \$404
Group 4 - \$479



**1-1/2 INCH ABS CABLE OPERATED
WASTE AND OVERFLOW DRAIN.**

1-1/2 inch Schedule 40 ABS (Pipe not included)
Fits Maximum of 22 inch Depth for Baths and Whirlpools
Rigid Head (Non-Adjustable)
Solid Brass Trim
IAPMO / UPC Listed

TBD336A22 Group 1 - \$239
Group 2 - \$275
Group 3 - \$299
Group 4 - \$374



**1-1/2 INCH ABS CABLE OPERATED
WASTE AND OVERFLOW DRAIN.**

1-1/2 inch Schedule 40 ABS (Pipe not included)
Fits Maximum of 22 inch Depth for Baths and Whirlpools
Extended Stem and Nut for Tubs up to 5/8 inch Thick
Rigid Head (Non-Adjustable)
Solid Brass Trim
IAPMO / UPC Listed

TBD336A22EXT Group 1 - \$314
Group 2 - \$350
Group 3 - \$374
Group 4 - \$449

Trim By Design



**1-1/2 INCH ABS CABLE OPERATED
WASTE AND OVERFLOW DRAIN.**

1-1/2 inch Schedule 40 ABS (Pipe not included)
Fits Maximum of 29 inch Depth for Baths and Whirlpools
Rigid Head (Non-Adjustable)
Solid Brass Trim
IAPMO / UPC Listed

TBD336A29 **Group 1** - \$269
Group 2 - \$305
Group 3 - \$329
Group 4 - \$404



**1-1/2 INCH ABS CABLE OPERATED
WASTE AND OVERFLOW DRAIN.**

1-1/2 inch Schedule 40 ABS (Pipe not included)
Fits Maximum of 29 inch Depth for Baths and Whirlpools
Extended Stem and Nut for Tubs up to 5/8 inch Thick
Rigid Head (Non-Adjustable)
Solid Brass Trim
IAPMO / UPC Listed

TBD336A29EXT **Group 1** - \$344
Group 2 - \$380
Group 3 - \$404
Group 4 - \$479



**1-1/2 INCH PVC CABLE OPERATED
WASTE AND OVERFLOW DRAIN.**

1-1/2 inch Schedule 40 PVC (Pipe not included)
Fits Maximum of 22 inch Depth for Baths and Whirlpools
Rigid Head (Non-Adjustable)
Solid Brass Trim
IAPMO / UPC Listed

TBD336P22 **Group 1** - \$239
Group 2 - \$275
Group 3 - \$299
Group 4 - \$374



**1-1/2 INCH PVC CABLE OPERATED
WASTE AND OVERFLOW DRAIN.**

1-1/2 inch Schedule 40 PVC (Pipe not included)
Fits Maximum of 22 inch Depth for Baths and Whirlpools
Extended Stem and Nut for Tubs up to 5/8 inch Thick
Rigid Head (Non-Adjustable)
Solid Brass Trim
IAPMO / UPC Listed

TBD336P22EXT **Group 1** - \$314
Group 2 - \$350
Group 3 - \$374
Group 4 - \$449



**1-1/2 INCH PVC CABLE OPERATED
WASTE AND OVERFLOW DRAIN.**

1-1/2 inch Schedule 40 PVC (Pipe not included)
Fits Maximum of 29 inch Depth for Baths and Whirlpools
Rigid Head (Non-Adjustable)
Solid Brass Trim
IAPMO / UPC Listed

TBD336P29 **Group 1** - \$269
Group 2 - \$305
Group 3 - \$329
Group 4 - \$404

Trim By Design



**1-1/2 INCH PVC CABLE OPERATED
WASTE AND OVERFLOW DRAIN.**

1-1/2 inch Schedule 40 PVC (Pipe not included)
Fits Maximum of 29 inch Depth for Baths and Whirlpools
Extended Stem and Nut for Tubs up to 5/8 inch Thick
Rigid Head (Non-Adjustable)
Solid Brass Trim
IAPMO / UPC Listed

TBD336P29EXT **Group 1 - \$344**
Group 2 - \$380
Group 3 - \$404
Group 4 - \$479



**CABLE OPERATED TUBULAR
WASTE AND OVERFLOW DRAIN.**

Fits Maximum of 22 inch Depth for Baths and Whirlpools
Made of 1-1/2 inch Tubular PVC
Rigid Head (Non-Adjustable)
Solid Brass Trim

TBD337P22 **Group 1 - \$199**
Group 2 - \$229
Group 3 - \$239
Group 4 - \$299



**EXTENSION BOLT FOR CABLE OPERATED
WASTE AND OVERFLOW DRAINS.**

1-1/2 inch Long Bolt for Bathtubs With Thick Flooring
Fits all Trim By Design Cable Operated Bath Wastes
Solid Brass Construction

TBD335.20.42MM \$12.00

Trim By Design

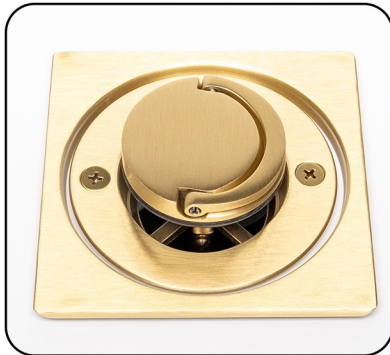


ROMAN TUB DRAIN TRIM SET.

Fits Assorted Brands EZ Test Shower Drain Bodies
 2-7/8 inch Center-to-Center Screw Holes
 3-1/2 inch Diameter
 Solid Brass Construction

TBD309

Group 1 - \$140
Group 2 - \$155
Group 3 - \$250
Group 4 - \$312



DELUXE ROMAN TUB DRAIN TRIM SET.

Fits Assorted Brands EZ Test Shower Drain Bodies
 2-7/8 inch Center-to-Center Screw Holes
 3-1/2 inch Diameter Drain Top
 4-1/4 inch Tile Square
 Solid Brass Construction

TBD310

Group 1 - \$166
Group 2 - \$185
Group 3 - \$288
Group 4 - \$360



DELUXE DRAIN TRIM SET.

Fits Assorted Brands EZ Test Shower Drain Bodies
 2-7/8 inch Center-to-Center Screw Holes
 3-9/16 inch Diameter Crown
 4-1/4 inch Tile Square
 Solid Brass Construction

TBD346

Group 1 - \$58
Group 2 - \$66
Group 3 - \$78
Group 4 - \$98



DELUXE DRAIN TRIM SET.

Fits Frank Pattern Domestic (Instant Set)
 Part Number: #20SD Shower Drain
 3-1/2 inch Crown
 2-7/8 inch Prong-to-Prong Grill
 4-1/4 inch Tile Square
 Solid Brass Construction

TBD349

Group 1 - \$69
Group 2 - \$83
Group 3 - \$87
Group 4 - N/A



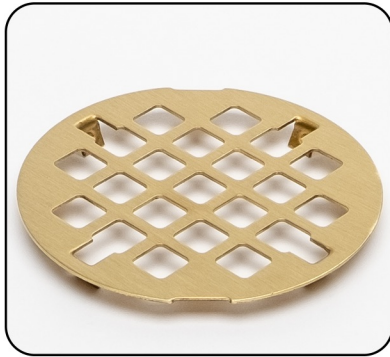
4-1/2 INCH O.D. SNAP-IN STRAINER.

3-1/8 inch Prong-to-Prong
 Solid Brass Construction

TBD350

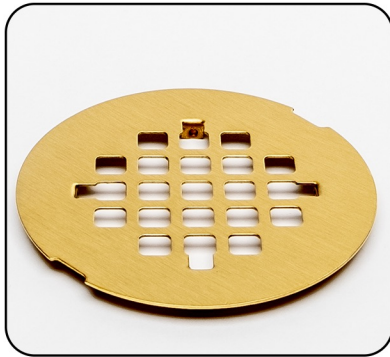
Group 1 - \$43
Group 2 - \$49
Group 3 - \$60
Group 4 - \$99

Trim By Design



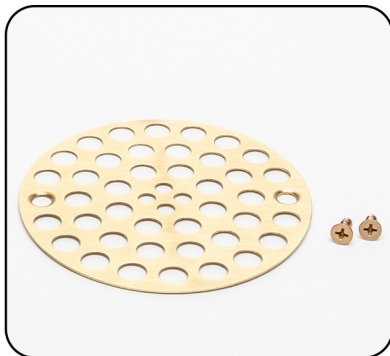
3-1/4 INCH O.D. SNAP-IN STRAINER.
 2-7/8 inch Prong-to-Prong
 Solid Brass Construction

TBD351 **Group 1 - \$28**
Group 2 - \$36
Group 3 - \$39
Group 4 - \$75



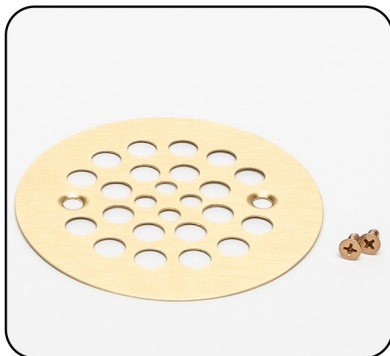
4-1/4 INCH O.D. SNAP-IN STRAINER.
 2-7/8 inch Prong-to-Prong
 Solid Brass Construction

TBD352 **Group 1 - \$39**
Group 2 - \$43
Group 3 - \$51
Group 4 - \$75



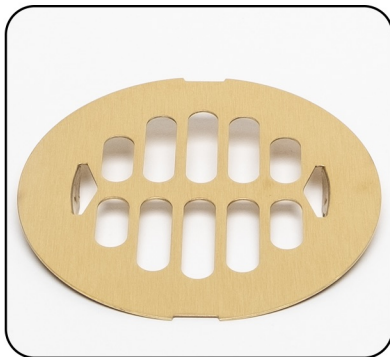
4 INCH O.D. SHOWER STRAINER WITH SCREWS.
 3-3/8 inch Center-to-Center Screw Holes
 Solid Brass Construction

TBD353 **Group 1 - \$39**
Group 2 - \$43
Group 3 - \$51
Group 4 - \$75



4-1/4 INCH O.D. SHOWER STRAINER WITH SCREWS.
 2-5/8 inch Center-to-Center Screw Holes
 Solid Brass Construction

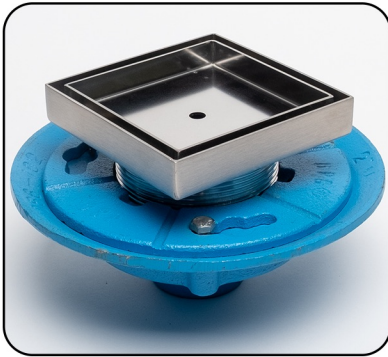
TBD354 **Group 1 - \$39**
Group 2 - \$43
Group 3 - \$51
Group 4 - \$75



4-1/4 INCH O.D. SNAP-IN STRAINER.
 2-7/8 inch Prong-to-Prong
 Solid Brass Construction

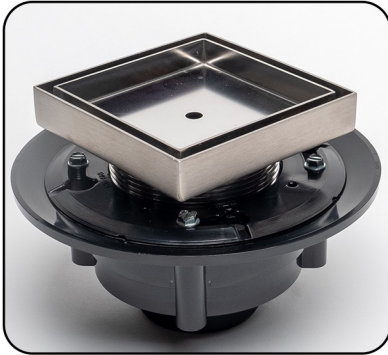
TBD355 **Group 1 - \$39**
Group 2 - \$43
Group 3 - \$51
Group 4 - \$75

Trim By Design



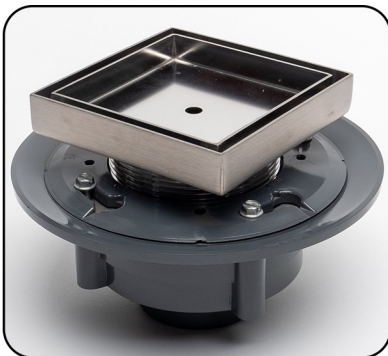
FLOOR AND SHOWER SQUARE TILE DRAIN.
 Fits 2 inch No-Hub Cast Iron Pipe
 Includes Cast Iron Drain Body
 5 inch Square Stainless Steel Tile Insert Top
 Includes Hair Strainer Basket and Lifting Key

TBD364
Group 1 - \$275
Group 2 - \$372
Group 3 - \$397
Group 4 - \$494



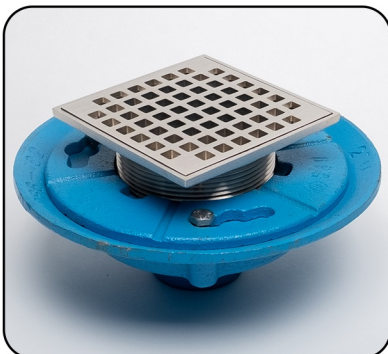
FLOOR AND SHOWER SQUARE TILE DRAIN.
 Fits 2 inch ABS Pipe
 Includes ABS Drain Body
 5 inch Square Stainless Steel Tile Insert Top
 Includes Hair Strainer Basket and Lifting Key

TBD364A
Group 1 - \$225
Group 2 - \$322
Group 3 - \$347
Group 4 - \$444



FLOOR AND SHOWER SQUARE TILE DRAIN.
 Fits 2 inch PVC Pipe
 Includes PVC Drain Body
 5 inch Square Stainless Steel Tile Insert Top
 Includes Hair Strainer Basket and Lifting Key

TBD364P
Group 1 - \$225
Group 2 - \$322
Group 3 - \$347
Group 4 - \$444



5 INCH SQUARE FLOOR SHOWER DRAIN.
 Fits 2 inch No-Hub Cast Iron Pipe
 Includes Cast Iron Drain Body
 Magnetically Secured for Easy Access
 Solid Brass Heavy-Duty Drain Top

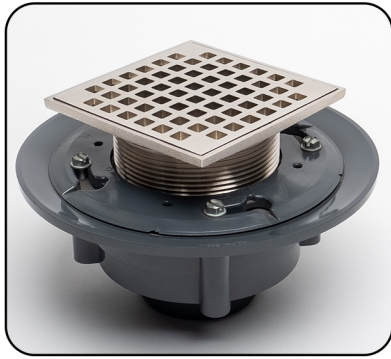
TBD362
Group 1 - \$442
Group 2 - \$462
Group 3 - \$494
Group 4 - \$618



5 INCH SQUARE FLOOR SHOWER DRAIN.
 Fits 2 inch ABS Pipe
 Includes ABS Drain Body
 Magnetically Secured for Easy Access
 Solid Brass Heavy-Duty Drain Top

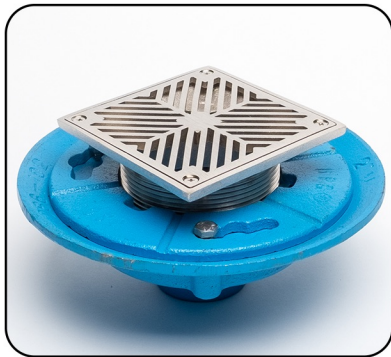
TBD362A
Group 1 - \$406
Group 2 - \$415
Group 3 - \$445
Group 4 - \$556

Trim By Design



5 INCH SQUARE FLOOR SHOWER DRAIN.
 Fits 2 inch PVC Pipe
 Includes PVC Drain Body
 Magnetically Secured for Easy Access
 Solid Brass Heavy-Duty Drain Top

TBD362P **Group 1 - \$406**
Group 2 - \$415
Group 3 - \$445
Group 4 - \$556



5 INCH SQUARE FLOOR SHOWER DRAIN.
 Fits 2 inch No-Hub Cast Iron Pipe
 Includes Cast Iron Drain Body
 Solid Brass Heavy-Duty Drain Top

TBD361 **Group 1 - \$389**
Group 2 - \$409
Group 3 - \$440
Group 4 - \$545



5 INCH SQUARE FLOOR SHOWER DRAIN.
 Fits 2 inch ABS Pipe
 Includes ABS Drain Body
 Solid Brass Heavy-Duty Drain Top

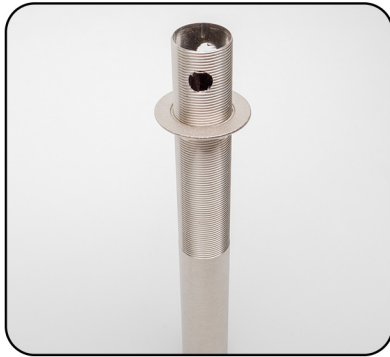
TBD361A **Group 1 - \$339**
Group 2 - \$359
Group 3 - \$390
Group 4 - \$495



5 INCH SQUARE FLOOR SHOWER DRAIN.
 Fits 2 inch PVC Pipe
 Includes PVC Drain Body
 Solid Brass Heavy-Duty Drain Top

TBD361P **Group 1 - \$339**
Group 2 - \$359
Group 3 - \$390
Group 4 - \$495

Trim By Design



**10 INCH LAVATORY DRAIN TAILPIECE
WITH OVERFLOW HOLES.**

5-1/2 inch of Thread
Designed for Thick Countertops and/or Sinks
Works with TBD400, TBD4001, TBD402, TBD404,
TBD4021, TBD4033, TBD410 and TBD4101
Solid Brass Construction

TBD473 **Group 1 - \$84**
Group 2 - \$93
Group 3 - \$102
Group 4 - \$128



**10 INCH LAVATORY DRAIN TAILPIECE
WITHOUT OVERFLOW HOLES.**

5-1/2 inch of Thread
Designed for Thick Countertops and/or Sinks
Works with TBD401, TBD4011, TBD403, TBD405,
TBD4031, TBD4035, TBD411 and TBD4111
Solid Brass Construction

TBD475 **Group 1 - \$84**
Group 2 - \$93
Group 3 - \$102
Group 4 - \$128



**LIFT & TURN DRAIN ASSEMBLY
WITH OVERFLOW HOLES.**

Fits 1-1/2 inch Opening
1-1/4 inch Diameter Tailpiece Connection
Solid Brass Construction
IAPMO / UPC LISTED
COMPLETELY PLATED FOR EXPOSED INSTALLATION

TBD400 **Group 1 - \$122**
Group 2 - \$137
Group 3 - \$168
Group 4 - \$210



**LIFT & TURN DRAIN ASSEMBLY
WITH OVERFLOW HOLES.**

Fits 1-1/2 inch Opening
1-1/4 inch Diameter Tailpiece Connection
Solid Brass Construction
IAPMO / UPC LISTED
EXPOSED PARTS PLATED

TBD4001 **Group 1 - \$102**
Group 2 - \$117
Group 3 - \$148
Group 4 - \$190



**LIFT & TURN DRAIN ASSEMBLY
WITHOUT OVERFLOW HOLES.**

Fits 1-1/2 inch Opening
1-1/4 inch Diameter Tailpiece Connection
Solid Brass Construction
IAPMO / UPC LISTED
COMPLETELY PLATED FOR EXPOSED INSTALLATION

TBD401 **Group 1 - \$122**
Group 2 - \$137
Group 3 - \$168
Group 4 - \$210

Trim By Design



**LIFT & TURN DRAIN ASSEMBLY
WITHOUT OVERFLOW HOLES.**
Fits 1-1/2 inch Opening
1-1/4 inch Diameter Tailpiece Connection
Solid Brass Construction
IAPMO / UPC LISTED
EXPOSED PARTS PLATED

TBD4011
Group 1 - \$102
Group 2 - \$117
Group 3 - \$148
Group 4 - \$190



**7-HOLE FLAT GRID STRAINER DRAIN ASSEMBLY
WITH OVERFLOW HOLES.**
Fits 1-1/2 inch Opening
1-1/4 inch Diameter Tailpiece Connection
Solid Brass Construction
IAPMO / UPC LISTED
COMPLETELY PLATED FOR EXPOSED INSTALLATION

TBD402
Group 1 - \$105
Group 2 - \$116
Group 3 - \$148
Group 4 - \$185



**7-HOLE FLAT GRID STRAINER DRAIN ASSEMBLY
WITHOUT OVERFLOW HOLES.**
Fits 1-1/2 inch Opening
1-1/4 inch Diameter Tailpiece Connection
Solid Brass Construction
IAPMO / UPC LISTED
COMPLETELY PLATED FOR EXPOSED INSTALLATION

TBD403
Group 1 - \$105
Group 2 - \$116
Group 3 - \$148
Group 4 - \$185



**SLOTTED FLAT GRID STRAINER DRAIN ASSEMBLY
WITH OVERFLOW HOLES.**
Fits 1-1/2 inch Opening
1-1/4 inch Diameter Tailpiece Connection
Solid Brass Construction
IAPMO / UPC LISTED
COMPLETELY PLATED FOR EXPOSED INSTALLATION

TBD4021
Group 1 - \$105
Group 2 - \$116
Group 3 - \$148
Group 4 - \$185



**SLOTTED FLAT GRID STRAINER DRAIN ASSEMBLY
WITHOUT OVERFLOW HOLES.**
Fits 1-1/2 inch Opening
1-1/4 inch Diameter Tailpiece Connection
Solid Brass Construction
IAPMO / UPC LISTED
COMPLETELY PLATED FOR EXPOSED INSTALLATION

TBD4031
Group 1 - \$105
Group 2 - \$116
Group 3 - \$148
Group 4 - \$185

Trim By Design



**CHANNEL FLAT GRID STRAINER DRAIN ASSEMBLY
WITH OVERFLOW HOLES.**

Fits 1-1/2 inch Opening
1-1/4 inch Diameter Tailpiece Connection
Solid Brass Construction
IAPMO / UPC LISTED

COMPLETELY PLATED FOR EXPOSED INSTALLATION

TBD4033

Group 1 - \$105
Group 2 - \$116
Group 3 - \$148
Group 4 - \$185



**CHANNEL FLAT GRID STRAINER DRAIN ASSEMBLY
WITHOUT OVERFLOW HOLES.**

Fits 1-1/2 inch Opening
1-1/4 inch Diameter Tailpiece Connection
Solid Brass Construction
IAPMO / UPC LISTED

COMPLETELY PLATED FOR EXPOSED INSTALLATION

TBD4035

Group 1 - \$105
Group 2 - \$116
Group 3 - \$148
Group 4 - \$185



**DAISY GRID STRAINER DRAIN ASSEMBLY
WITH OVERFLOW HOLES.**

Fits 1-1/2 inch Opening
1-1/4 inch Diameter Tailpiece Connection
Solid Brass Construction
IAPMO / UPC LISTED

COMPLETELY PLATED FOR EXPOSED INSTALLATION

TBD404

Group 1 - \$105
Group 2 - \$116
Group 3 - \$148
Group 4 - \$185



**DAISY GRID STRAINER DRAIN ASSEMBLY
WITHOUT OVERFLOW HOLES.**

Fits 1-1/2 inch Opening
1-1/4 inch Diameter Tailpiece Connection
Solid Brass Construction
IAPMO / UPC LISTED

COMPLETELY PLATED FOR EXPOSED INSTALLATION

TBD405

Group 1 - \$105
Group 2 - \$116
Group 3 - \$148
Group 4 - \$185



**19-HOLE FLAT GRID STRAINER DRAIN ASSEMBLY
WITH OVERFLOW HOLES.**

Fits 1-1/2 inch Opening
1-1/4 inch Diameter Tailpiece Connection
Solid Brass Construction
IAPMO / UPC LISTED

COMPLETELY PLATED FOR EXPOSED INSTALLATION

TBD410

Group 1 - \$105
Group 2 - \$116
Group 3 - \$148
Group 4 - \$185

Trim By Design



19-HOLE FLAT GRID STRAINER DRAIN ASSEMBLY WITH OVERFLOW HOLES.

Fits 1-1/2 inch Opening
 1-1/4 inch Diameter Tailpiece Connection
 Solid Brass Construction
 IAPMO / UPC LISTED
 EXPOSED PARTS PLATED

TBD4101 **Group 1 - \$87**
Group 2 - \$96
Group 3 - \$116
Group 4 - \$150



19-HOLE FLAT GRID STRAINER DRAIN ASSEMBLY WITHOUT OVERFLOW HOLES.

Fits 1-1/2 inch Opening
 1-1/4 inch Diameter Tailpiece Connection
 Solid Brass Construction
 IAPMO / UPC LISTED
COMPLETELY PLATED FOR EXPOSED INSTALLATION

TBD411 **Group 1 - \$105**
Group 2 - \$116
Group 3 - \$148
Group 4 - \$185



19-HOLE FLAT GRID STRAINER DRAIN ASSEMBLY WITHOUT OVERFLOW HOLES.

Fits 1-1/2 inch Opening
 1-1/4 inch Diameter Tailpiece Connection
 Solid Brass Construction
 IAPMO / UPC LISTED
 EXPOSED PARTS PLATED

TBD4111 **Group 1 - \$87**
Group 2 - \$96
Group 3 - \$116
Group 4 - \$150



POP-UP LAVATORY DRAIN ASSEMBLY WITH OVERFLOW HOLES.

Fits 1-1/2 inch Opening
 1-1/4 inch Diameter Tailpiece Connection
 Solid Brass Construction (Hardware not Finished)
COMPLETELY PLATED FOR EXPOSED INSTALLATION

TBD406 **Group 1 - \$145**
Group 2 - \$161
Group 3 - \$177
Group 4 - \$221

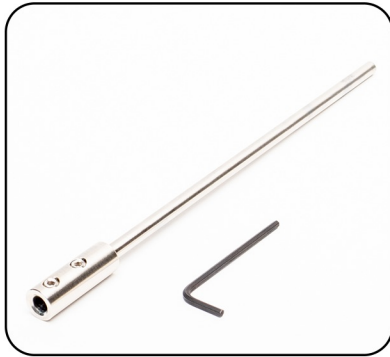


POP-UP LAVATORY DRAIN ASSEMBLY WITHOUT OVERFLOW HOLES.

Fits 1-1/2 inch Opening
 1-1/4 inch Diameter Tailpiece Connection
 Solid Brass Construction (Hardware not Finished)
COMPLETELY PLATED FOR EXPOSED INSTALLATION

TBD407 **Group 1 - \$145**
Group 2 - \$161
Group 3 - \$177
Group 4 - \$221

Trim By Design



POP-UP LIFT ROD EXTENSION.

TBD4065

\$29

Fits Pop-Up Rod or Horizontal Lift Rod for
Pop-Up Lavatory Assembly
Chrome Plated Brass



**HAND OPERATED POP-UP LAVATORY
DRAIN ASSEMBLY WITH OVERFLOW HOLES.**

TBD408

Group 1 - \$155

Group 2 - \$171

Group 3 - \$187

Group 4 - \$231

Fits 1-1/2 inch Opening
1-1/4 inch Diameter Tailpiece Connection
Solid Brass Construction

COMPLETELY PLATED FOR EXPOSED INSTALLATION



**HAND OPERATED POP-UP LAVATORY
DRAIN ASSEMBLY WITHOUT OVERFLOW HOLES.**

TBD409

Group 1 - \$155

Group 2 - \$171

Group 3 - \$187

Group 4 - \$231

Fits 1-1/2 inch Opening
1-1/4 inch Diameter Tailpiece Connection
Solid Brass Construction

COMPLETELY PLATED FOR EXPOSED INSTALLATION



**19-HOLE FLAT OFFSET GRID STRAINER
DRAIN ASSEMBLY WITH OVERFLOW HOLES.**

TBD421

Group 1 - \$149

Group 2 - \$220

Group 3 - \$247

Group 4 - N/A

Fits 1-1/2 inch Opening
1-1/4 inch Diameter Tailpiece Connection
Solid Brass Construction

COMPLETELY PLATED FOR EXPOSED INSTALLATION



**19-HOLE FLAT OFFSET GRID STRAINER
DRAIN ASSEMBLY WITHOUT OVERFLOW HOLES.**

TBD4211

Group 1 - \$149

Group 2 - \$220

Group 3 - \$247

Group 4 - N/A

Fits 1-1/2 inch Opening
1-1/4 inch Diameter Tailpiece Connection
Solid Brass Construction

COMPLETELY PLATED FOR EXPOSED INSTALLATION

Trim By Design



**SWIVEL DRAIN ASSEMBLY
WITH OVERFLOW HOLES.**

Fits 1-1/2 inch Opening
1-1/4 inch Diameter Tailpiece Connection
Solid Brass Construction
IAPMO / UPC LISTED

COMPLETELY PLATED FOR EXPOSED INSTALLATION

TBD412 **Group 1 - \$119**
Group 2 - \$140
Group 3 - \$172
Group 4 - N/A



**SWIVEL DRAIN ASSEMBLY
WITHOUT OVERFLOW HOLES.**

Fits 1-1/2 inch Opening
1-1/4 inch Diameter Tailpiece Connection
Solid Brass Construction
IAPMO / UPC LISTED

COMPLETELY PLATED FOR EXPOSED INSTALLATION

TBD413 **Group 1 - \$119**
Group 2 - \$140
Group 3 - \$172
Group 4 - N/A



**FIXED DOME DRAIN ASSEMBLY
WITHOUT OVERFLOW HOLES.**

Fits 1-1/2 inch Opening
2-3/4 inch Diameter Umbrella Dome Top
1-1/4 inch Diameter Tailpiece Connection
Solid Brass Construction
IAPMO / UPC LISTED

COMPLETELY PLATED FOR EXPOSED INSTALLATION

TBD414 **Group 1 - \$140**
Group 2 - \$156
Group 3 - \$178
Group 4 - \$223



**DAISY GRID DRAIN STRAINER ASSEMBLY
WITHOUT OVERFLOW HOLES.**

Fits 1-3/4 inch Opening
2-1/2 inch Daisy Drain Plug
1-1/4 inch Diameter Tailpiece Connection
Solid Brass Construction

COMPLETELY PLATED FOR EXPOSED INSTALLATION

TBD415 **Group 1 - \$140**
Group 2 - \$156
Group 3 - \$178
Group 4 - \$223



**TOUCH SEAL LAVATORY DRAIN ASSEMBLY
WITH OVERFLOW HOLES.**

Fits 1-1/2 inch Opening
4 inch Body for Thick Counter / Sink Installations
1-1/4 inch Diameter Tailpiece Connection
Solid Brass Construction

COMPLETELY PLATED FOR EXPOSED INSTALLATION

TBD4161 **Group 1 - \$140**
Group 2 - \$156
Group 3 - \$178
Group 4 - \$223

Trim By Design



**TOUCH SEAL LAVATORY DRAIN ASSEMBLY
WITHOUT OVERFLOW HOLES.**

TBD4162

Group 1 - \$140
Group 2 - \$156
Group 3 - \$178
Group 4 - \$223

Fits 1-1/2 inch Opening
4 inch Body for Thick Counter / Sink Installations
1-1/4 inch Diameter Tailpiece Connection
Solid Brass Construction

COMPLETELY PLATED FOR EXPOSED INSTALLATION



**TOUCH SEAL DOME DRAIN ASSEMBLY
WITH OVERFLOW HOLES.**

TBD417

Group 1 - \$140
Group 2 - \$156
Group 3 - \$178
Group 4 - \$223

Fits 1-1/2 inch Opening
2-1/2 inch Diameter Dome Top
1-1/4 inch Diameter Tailpiece Connection
Solid Brass Construction
IAPMO / UPC LISTED

COMPLETELY PLATED FOR EXPOSED INSTALLATION



**TOUCH SEAL DOME DRAIN ASSEMBLY
WITHOUT OVERFLOW HOLES.**

TBD418

Group 1 - \$140
Group 2 - \$156
Group 3 - \$178
Group 4 - \$223

Fits 1-1/2 inch Opening
2-1/2 inch Diameter Dome Top
1-1/4 inch Diameter Tailpiece Connection
Solid Brass Construction
IAPMO / UPC LISTED

COMPLETELY PLATED FOR EXPOSED INSTALLATION



**SQUARE FIXED DOME DRAIN ASSEMBLY
WITHOUT OVERFLOW HOLES.**

TBD419

Group 1 - \$119
Group 2 - \$140
Group 3 - \$172
Group 4 - N/A

Fits 1-1/2 inch Opening
2-1/2 inch Square Top
1-1/4 inch Diameter Tailpiece
Solid Brass Construction
IAPMO / UPC LISTED

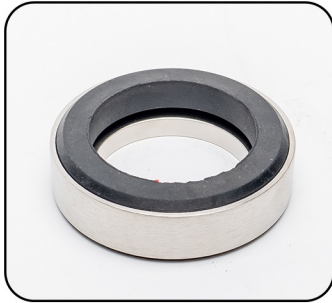
COMPLETELY PLATED FOR EXPOSED INSTALLATION

Trim By Design



BRASS SPACER RING FOR THIN WALL SINKS.
 Allows Lavatory Drains with Overflow Holes to be Used with Thin Wall Sinks or Sinks Without Overflow Holes
 Solid Brass Construction

TBD450
Group 1 - \$39
Group 2 - \$45
Group 3 - \$58
Group 4 - \$78



BRASS MOUNTING DISC FOR VESSEL SINKS.
 Designed to Work for Above Counter Vessel Sinks without Overflow
 Provides Stable Base for Curved Vessel Sinks
 Includes 2 Rubber Gaskets
 Solid Brass Construction

TBD490
Group 1 - \$51
Group 2 - \$84
Group 3 - \$94
Group 4 - \$118



1-1/2 INCH O.D. X 1-1/4 INCH O.D. X 8 INCH REDUCING FLANGED TAILPIECE.
 Brass Nut
 17-Gauge
 Solid Brass Construction

TBD463
Group 1 - \$66
Group 2 - \$73
Group 3 - \$87
Group 4 - \$109



1-1/4 INCH O.D. X 8 INCH THREAD BOTH ENDS TAILPIECE.
 17-Gauge
 Solid Brass Construction

TBD465
Group 1 - \$64
Group 2 - \$71
Group 3 - \$86
Group 4 - N/A



1-1/4 INCH O.D. X 12 INCH THREAD BOTH ENDS TAILPIECE.
 17-Gauge
 Solid Brass Construction

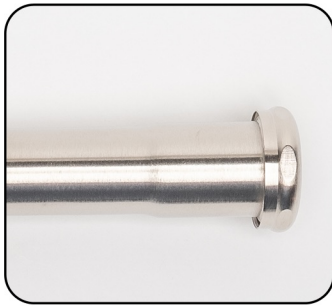
TBD467
Group 1 - \$87
Group 2 - \$96
Group 3 - \$110
Group 4 - \$150



1-1/4 INCH O.D. X 16 INCH THREAD BOTH ENDS TAILPIECE.
 17-Gauge
 Solid Brass Construction

TBD4671
Group 1 - \$126
Group 2 - \$140
Group 3 - \$169
Group 4 - \$211

Trim By Design



**1-1/4 INCH O.D. X 8 INCH
SLIP JOINT EXTENSION TUBE.**

Brass Nut
17-Gauge
Solid Brass Construction

TBD466 **Group 1 - \$70**
Group 2 - \$78
Group 3 - \$93
Group 4 - N/A



**1-1/4 INCH O.D. X 12 INCH
SLIP JOINT EXTENSION TUBE.**

Brass Nut
17-Gauge
Solid Brass Construction

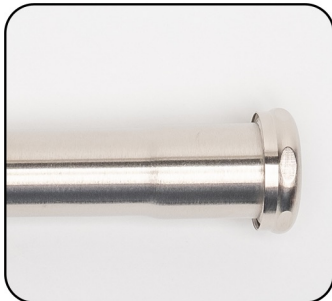
TBD468 **Group 1 - \$95**
Group 2 - \$105
Group 3 - \$119
Group 4 - \$150



**1-1/4 INCH O.D. X 16 INCH
SLIP JOINT EXTENSION TUBE.**

Brass Nut
17-Gauge
Solid Brass Construction

TBD4681 **Group 1 - \$130**
Group 2 - \$144
Group 3 - \$172
Group 4 - \$210



**1-1/2 INCH O.D. X 12 INCH
SLIP JOINT EXTENSION TUBE.**

Brass Nut
17-Gauge
Solid Brass Construction

TBD470 **Group 1 - \$103**
Group 2 - \$114
Group 3 - \$128
Group 4 - \$160



**1-1/2 INCH O.D. X 16 INCH
SLIP JOINT EXTENSION TUBE.**

Brass Nut
17-Gauge
Solid Brass Construction

TBD4701 **Group 1 - \$144**
Group 2 - \$160
Group 3 - \$189
Group 4 - \$231

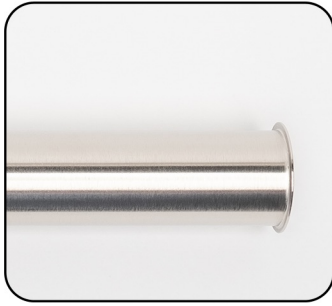


**1-1/2 INCH O.D. X 12 INCH
FLANGED TAILPIECE.**

17-Gauge
Solid Brass Construction

TBD471 **Group 1 - \$90**
Group 2 - \$99
Group 3 - \$110
Group 4 - \$138

Trim By Design



**1-1/2 INCH O.D. X 16 INCH
FLANGED TAILPIECE.**
17-Gauge
Solid Brass Construction

TBD4711 **Group 1 - \$127**
Group 2 - \$141
Group 3 - \$1701
Group 4 - \$208



**1-1/4 INCH O.D. X 12 INCH
FLANGED TAILPIECE.**
17-Gauge
Solid Brass Construction

TBD472 **Group 1 - \$87**
Group 2 - \$96
Group 3 - \$110
Group 4 - \$150



**1-1/4 INCH O.D. X 8 INCH Y-BRANCH
SLIP JOINT EXTENSION TUBE.**
7/8 inch O.D. (3/4 inch Copper) Y-Branch Inlet
Brass Nut
17-Gauge
Solid Brass Construction

TBD477 **Group 1 - \$98**
Group 2 - \$109
Group 3 - \$124
Group 4 - \$155



**1-1/2 INCH O.D. X 8 INCH Y-BRANCH
SLIP JOINT EXTENSION TUBE.**
7/8 inch O.D. (3/4 inch Copper) Y-Branch Inlet
Brass Nut
17-Gauge
Solid Brass Construction

TBD478 **Group 1 - \$109**
Group 2 - \$121
Group 3 - \$135
Group 4 - \$169



**1-1/4 INCH O.D. BRASS SLIP JOINT
DRAINAGE COUPLING.**
Designed for Tubular Drainage Applications
Brass Nuts
Solid Brass Construction

TBD480 **Group 1 - \$84**
Group 2 - \$93
Group 3 - \$108
Group 4 - \$135



**1-1/4 INCH O.D. BRASS SLIP JOINT 45 DEGREE
DRAINAGE ELBOW.**
Designed for Tubular Drainage Applications
Brass Nuts
Solid Brass Construction

TBD482 **Group 1 - \$84**
Group 2 - \$93
Group 3 - \$108
Group 4 - \$135

Trim By Design



1-1/4 INCH O.D. BRASS SLIP JOINT 90 DEGREE DRAINAGE ELBOW.

Designed for Tubular Drainage Applications
Brass Nuts
Solid Brass Construction

TBD484

Group 1 - \$84
Group 2 - \$93
Group 3 - \$108
Group 4 - \$135



1-1/2 INCH O.D. BRASS SLIP JOINT DRAINAGE COUPLING.

Designed for Tubular Drainage Applications
Brass Nuts
Solid Brass Construction

TBD485

Group 1 - \$85
Group 2 - \$94
Group 3 - \$109
Group 4 - \$137



1-1/2 INCH O.D. BRASS SLIP JOINT 45 DEGREE DRAINAGE ELBOW.

Designed for Tubular Drainage Applications
Brass Nuts
Solid Brass Construction

TBD487

Group 1 - \$85
Group 2 - \$94
Group 3 - \$109
Group 4 - \$137



1-1/2 INCH O.D. BRASS SLIP JOINT 90 DEGREE DRAINAGE ELBOW.

Designed for Tubular Drainage Applications
Brass Nuts
Solid Brass Construction

TBD489

Group 1 - \$85
Group 2 - \$94
Group 3 - \$109
Group 4 - \$137

Trim By Design



1-1/4 INCH O.D. X 1-1/4 INCH O.D. P-TRAP KIT WITH FLANGE. TBD430
 11-1/2 inch Overall Length End-To-End
 Includes Brass High Box Flange
 17-Gauge
 Solid Brass Construction

Group 1 - \$182
Group 2 - \$211
Group 3 - \$250
Group 4 - \$295



1-1/4 INCH O.D. X 1-1/4 INCH O.D. P-TRAP LESS FLANGE. TBD4301
 11-1/2 inch Overall Length End-To-End
 17-Gauge
 Solid Brass Construction

Group 1 - \$139
Group 2 - \$163
Group 3 - \$183
Group 4 - \$229



1-1/4 INCH O.D. X 1-1/4 INCH O.D. P-TRAP KIT WITH FLANGE. TBD430-18
 18 inch Overall Length End-To-End
 Includes Brass High Box Flange
 17-Gauge
 Solid Brass Construction

Group 1 - \$232
Group 2 - \$248
Group 3 - \$279
Group 4 - \$349



1-1/4 INCH O.D. X 1-1/4 INCH O.D. P-TRAP KIT WITH FLANGE. TBD430-24
 24 inch Overall Length End-To-End
 Includes Brass High Box Flange
 17-Gauge
 Solid Brass Construction

Group 1 - \$281
Group 2 - \$301
Group 3 - \$337
Group 4 - \$421



1-1/4 INCH O.D. X 1-1/2 INCH O.D. P-TRAP KIT WITH FLANGE. TBD431
 12-1/2 inch Overall Length End-To-End
 Includes Brass High Box Flange
 17-Gauge
 Solid Brass Construction

Group 1 - \$192
Group 2 - \$227
Group 3 - \$258
Group 4 - \$322



1-1/4 INCH O.D. X 1-1/2 INCH O.D. P-TRAP LESS FLANGE. TBD4311
 12-1/2 inch Overall Length End-to-End
 17-Gauge
 Solid Brass Construction

Group 1 - \$149
Group 2 - \$179
Group 3 - \$205
Group 4 - \$256

Trim By Design



1-1/4 INCH O.D. X 1-1/2 INCH O.D. P-TRAP KIT WITH FLANGE. TBD431-19
 19 inch Overall Length End-to-End
 Includes Brass High Box Flange
 17-Gauge
 Solid Brass Construction

Group 1 - \$262
Group 2 - \$274
Group 3 - \$305
Group 4 - \$381



1-1/4 INCH O.D. X 1-1/2 INCH O.D. P-TRAP KIT WITH FLANGE. TBD431-24
 24 inch Overall Length End-to-End
 Includes Brass High Box Flange
 17-Gauge
 Solid Brass Construction

Group 1 - \$283
Group 2 - \$303
Group 3 - \$339
Group 4 - \$424



1-1/2 INCH O.D. X 1-1/2 INCH O.D. P-TRAP KIT WITH FLANGE. TBD432
 12-1/2 inch Overall Length End-to-End
 Includes Brass High Box Flange
 17-Gauge
 Solid Brass Construction

Group 1 - \$192
Group 2 - \$227
Group 3 - \$258
Group 4 - \$322



1-1/2 INCH O.D. X 1-1/2 INCH O.D. P-TRAP LESS FLANGE. TBD4321
 12-1/2 inch Overall Length End-to-End
 17-Gauge
 Solid Brass Construction

Group 1 - \$149
Group 2 - \$179
Group 3 - \$205
Group 4 - \$256



1-1/2 INCH O.D. X 1-1/2 INCH O.D. P-TRAP KIT WITH FLANGE. TBD432-19
 19 inch Overall Length End-to-End
 Includes Brass High Box Flange
 17-Gauge
 Solid Brass Construction

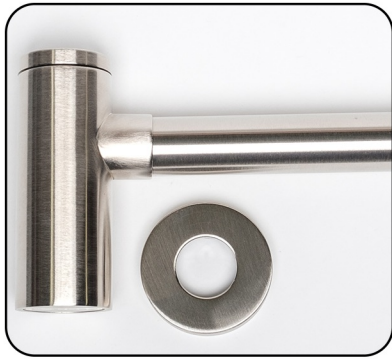
Group 1 - \$262
Group 2 - \$274
Group 3 - \$305
Group 4 - \$381



1-1/2 INCH O.D. X 1-1/2 INCH O.D. P-TRAP KIT WITH FLANGE. TBD432-24
 24 inch Overall Length End-to-End
 Includes Brass High Box Flange
 17-Gauge
 Solid Brass Construction

Group 1 - \$283
Group 2 - \$303
Group 3 - \$339
Group 4 - \$424

Trim By Design



1-1/4 INCH O.D. X 1-1/4 INCH O.D. CYLINDER STYLE TRAP.
 18-1/2 inch Overall Length End-To-End
 IAPMO / UPC LISTED
 Solid Brass Construction

TBD440
Group 1 - \$310
Group 2 - \$356
Group 3 - \$388
Group 4 - \$485



1-1/4 INCH O.D. CONTEMPORARY FLAT PATTERN FLANGE.
 1-1/4 in. I.D. X 2-3/4 in. O.D. X 3/8 in. HT.
 Solid Brass Construction

TBD462
Group 1 - \$43
Group 2 - \$48
Group 3 - \$53
Group 4 - \$66



1-1/4 INCH SLIP JOINT NUT.
 Solid Brass Construction

TBD650
Group 1 - \$32
Group 2 - \$36
Group 3 - \$45
Group 4 - N/A



1-1/2 INCH SLIP JOINT NUT.
 Solid Brass Construction

TBD652
Group 1 - \$32
Group 2 - \$36
Group 3 - \$45
Group 4 - N/A

Trim By Design



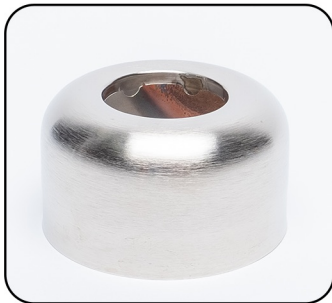
1-1/2 INCH I.P.S BOX FLANGE.
1-7/8 in. I.D. X 3 in. O.D. X 1-11/16 in. HT.
Solid Brass Construction

TBD454 **Group 1 - \$51**
Group 2 - \$59
Group 3 - \$66
Group 4 - \$83



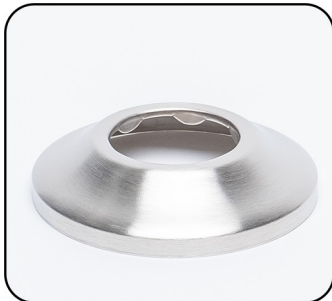
1-1/4 INCH O.D. BOX FLANGE.
1-1/4 in. I.D. X 3 in. O.D. X 1-11/16 in. HT.
Solid Brass Construction

TBD455 **Group 1 - \$43**
Group 2 - \$48
Group 3 - \$53
Group 4 - \$66



1-1/2 INCH O.D. BOX FLANGE.
1-1/2 in. I.D. X 3 in. O.D. X 1-11/16 in. HT.
Solid Brass Construction

TBD456 **Group 1 - \$43**
Group 2 - \$48
Group 3 - \$53
Group 4 - \$66



1-1/4 INCH O.D. SURE GRIP FLANGE.
1-1/4 in. I.D. X 2-3/4 in. O.D. X 11/16 in. HT.
Solid Brass Construction

TBD459 **Group 1 - \$43**
Group 2 - \$48
Group 3 - \$53
Group 4 - \$66



1-1/2 INCH O.D. SURE GRIP FLANGE.
1-1/2 in. I.D. X 2-3/4 in. O.D. X 11/16 in. HT.
Solid Brass Construction

TBD460 **Group 1 - \$43**
Group 2 - \$48
Group 3 - \$53
Group 4 - \$66



1-1/2 INCH I.P.S. SURE GRIP FLANGE.
1-7/8 in. I.D. X 3 in. O.D. X 7/16 in. HT.
Solid Brass Construction

TBD461 **Group 1 - \$43**
Group 2 - \$48
Group 3 - \$53
Group 4 - \$66

Trim By Design



MULTI-TURN ANGLE STOP VALVE WITH OVAL HANDLE.
 1/2 in. Female Inlet X 3/8 in. O.D. Compression Outlet
 Temperature Rating: 40° - 140° F
 Pressure Rating: 125 PSI Maximum
 Lead Free Brass Construction

TBD501C **Group 1 - \$79**
Group 2 - \$89
Group 3 - \$125
Group 4 - \$156



MULTI-TURN ANGLE STOP VALVE WITH CROSS HANDLE.
 1/2 in. Female Inlet X 3/8 in. O.D. Compression Outlet
 Temperature Rating: 40° - 140° F
 Pressure Rating: 125 PSI Maximum
 Lead Free Brass Construction

TBD501CX **Group 1 - \$105**
Group 2 - \$125
Group 3 - \$147
Group 4 - \$184



1/4-TURN ANGLE STOP VALVE WITH OVAL HANDLE.
 1/2 in. Female Inlet X 3/8 in. O.D. Compression Outlet
 1/4-Turn Ceramic Disc Cartridge
 Temperature Rating: 40° - 140° F
 Pressure Rating: 125 PSI Maximum
 Lead Free Brass Construction

TBD501CQT **Group 1 - \$112**
Group 2 - \$125
Group 3 - \$155
Group 4 - \$194



1/4-TURN ANGLE STOP VALVE WITH LEVER HANDLE.
 1/2 in. Female Inlet X 3/8 in. O.D. Compression Outlet
 1/4-Turn Ceramic Disc Cartridge
 Temperature Rating: 40° - 140° F
 Pressure Rating: 125 PSI Maximum
 Lead Free Brass Construction

TBD501CQTL **Group 1 - \$135**
Group 2 - \$152
Group 3 - \$169
Group 4 - \$209



1/4-TURN ANGLE STOP VALVE WITH CROSS HANDLE.
 1/2 in. Female Inlet X 3/8 in. O.D. Compression Outlet
 1/4-Turn Ceramic Disc Cartridge
 Temperature Rating: 40° - 140° F
 Pressure Rating: 125 PSI Maximum
 Lead Free Brass Construction

TBD501CQTX **Group 1 - \$135**
Group 2 - \$152
Group 3 - \$169
Group 4 - \$209



MULTI-TURN ANGLE STOP VALVE WITH OVAL HANDLE.
 1/2 in. Female Inlet X 1/2 in. O.D. Compression Outlet
 Temperature Rating: 40° - 140° F
 Pressure Rating: 125 PSI Maximum
 Lead Free Brass Construction

TBD502C **Group 1 - \$90**
Group 2 - \$116
Group 3 - \$137
Group 4 - \$172

Trim By Design



MULTI-TURN ANGLE STOP VALVE WITH CROSS HANDLE.
 1/2 in. Female Inlet X 1/2 in. O.D. Compression Outlet
 Temperature Rating: 40° - 140° F
 Pressure Rating: 125 PSI Maximum
 Lead Free Brass Construction

TBD502CX
Group 1 - \$115
Group 2 - \$133
Group 3 - \$149
Group 4 - \$188



MULTI-TURN ANGLE STOP VALVE WITH OVAL HANDLE.
 1/2 in. Nom. Compression Inlet X 3/8 in. O.D. Compression Outlet
 Temperature Rating: 40° - 140° F
 Pressure Rating: 125 PSI Maximum
 Lead Free Brass Construction

TBD503C
Group 1 - \$89
Group 2 - \$105
Group 3 - \$135
Group 4 - \$169



MULTI-TURN ANGLE STOP VALVE WITH CROSS HANDLE.
 1/2 in. Nom. Compression Inlet X 3/8 in. O.D. Compression Outlet
 Temperature Rating: 40° - 140° F
 Pressure Rating: 125 PSI Maximum
 Lead Free Brass Construction

TBD503CX
Group 1 - \$99
Group 2 - \$139
Group 3 - \$159
Group 4 - \$199



1/4-TURN ANGLE STOP VALVE WITH OVAL HANDLE.
 1/2 in. Nom. Compression Inlet X 3/8 in. O.D. Compression Outlet
 1/4-Turn Ceramic Disc Cartridge
 Temperature Rating: 40° - 140° F
 Pressure Rating: 125 PSI Maximum
 Lead Free Brass Construction

TBD503CQT
Group 1 - \$112
Group 2 - \$125
Group 3 - \$160
Group 4 - \$200



1/4-TURN ANGLE STOP VALVE WITH LEVER HANDLE.
 1/2 in. Nom. Compression Inlet X 3/8 in. O.D. Compression Outlet
 1/4-Turn Ceramic Disc Cartridge
 Temperature Rating: 40° - 140° F
 Pressure Rating: 125 PSI Maximum
 Lead Free Brass Construction

TBD503CQTL
Group 1 - \$129
Group 2 - \$165
Group 3 - \$183
Group 4 - \$229



1/4-TURN ANGLE STOP VALVE WITH CROSS HANDLE.
 1/2 in. Nom. Compression Inlet X 3/8 in. O.D. Compression Outlet
 1/4-Turn Ceramic Disc Cartridge
 Temperature Rating: 40° - 140° F
 Pressure Rating: 125 PSI Maximum
 Lead Free Brass Construction

TBD503CQTX
Group 1 - \$129
Group 2 - \$165
Group 3 - \$183
Group 4 - \$229

Trim By Design



MULTI-TURN ANGLE STOP VALVE WITH OVAL HANDLE. **TBD504C**
 1/2 in. Nom. Compression Inlet X 1/2 in. O.D. Compression Outlet
 Temperature Rating: 40° - 140° F
 Pressure Rating: 125 PSI Maximum
 Lead Free Brass Construction

Group 1 - \$90
Group 2 - \$116
Group 3 - \$146
Group 4 - \$183



MULTI-TURN ANGLE STOP VALVE WITH CROSS HANDLE. **TBD504CX**
 1/2 in. Nom. Compression Inlet X 1/2 in. O.D. Compression Outlet
 Temperature Rating: 40° - 140° F
 Pressure Rating: 125 PSI Maximum
 Lead Free Brass Construction

Group 1 - \$99
Group 2 - \$139
Group 3 - \$161
Group 4 - \$202



1/4-TURN ANGLE STOP VALVE WITH OVAL HANDLE. **TBD504CQT**
 1/2 in. Nom. Compression Inlet X 1/2 in. O.D. Compression Outlet
 1/4-Turn Ceramic Disc Cartridge
 Temperature Rating: 40° - 140° F
 Pressure Rating: 125 PSI Maximum
 Lead Free Brass Construction

Group 1 - \$112
Group 2 - \$125
Group 3 - \$169
Group 4 - \$213



1/4-TURN ANGLE STOP VALVE WITH LEVER HANDLE. **TBD504CQTL**
 1/2 in. Nom. Compression Inlet X 1/2 in. O.D. Compression Outlet
 1/4-Turn Ceramic Disc Cartridge
 Temperature Rating: 40° - 140° F
 Pressure Rating: 125 PSI Maximum
 Lead Free Brass Construction

Group 1 - \$129
Group 2 - \$165
Group 3 - \$183
Group 4 - \$229



1/4-TURN ANGLE STOP VALVE WITH CROSS HANDLE. **TBD504CQTX**
 1/2 in. Nom. Compression Inlet X 1/2 in. O.D. Compression Outlet
 1/4-Turn Ceramic Disc Cartridge
 Temperature Rating: 40° - 140° F
 Pressure Rating: 125 PSI Maximum
 Lead Free Brass Construction

Group 1 - \$129
Group 2 - \$165
Group 3 - \$183
Group 4 - \$229



MULTI-TURN STRAIGHT STOP VALVE WITH OVAL HANDLE. **TBD510C**
 1/2 in. Female Inlet X 3/8 in. O.D. Compression Outlet
 Temperature Rating: 40° - 140° F
 Pressure Rating: 125 PSI Maximum
 Lead Free Brass Construction

Group 1 - \$107
Group 2 - \$119
Group 3 - \$136
Group 4 - \$170

Trim By Design



MULTI-TURN STRAIGHT STOP VALVE WITH CROSS HANDLE.
 1/2 in. Female Inlet X 3/8 in. O.D. Compression Outlet
 Temperature Rating: 40° - 140° F
 Pressure Rating: 125 PSI Maximum
 Lead Free Brass Construction

TBD510CX
Group 1 - \$118
Group 2 - \$131
Group 3 - \$148
Group 4 - \$185



1/4-TURN STRAIGHT STOP VALVE WITH OVAL HANDLE.
 1/2 in. Female Inlet X 3/8 in. O.D. Compression Outlet
 1/4-Turn Ceramic Disc Cartridge
 Temperature Rating: 40° - 140° F
 Pressure Rating: 125 PSI Maximum
 Lead Free Brass Construction

TBD510CQT
Group 1 - \$125
Group 2 - \$139
Group 3 - \$156
Group 4 - \$195



1/4-TURN STRAIGHT STOP VALVE WITH LEVER HANDLE.
 1/2 in. Female Inlet X 3/8 in. O.D. Compression Outlet
 1/4-Turn Ceramic Disc Cartridge
 Temperature Rating: 40° - 140° F
 Pressure Rating: 125 PSI Maximum
 Lead Free Brass Construction

TBD510CQL
Group 1 - \$138
Group 2 - \$154
Group 3 - \$170
Group 4 - \$213



1/4-TURN STRAIGHT STOP VALVE WITH CROSS HANDLE.
 1/2 in. Female Inlet X 3/8 in. O.D. Compression Outlet
 1/4-Turn Ceramic Disc Cartridge
 Temperature Rating: 40° - 140° F
 Pressure Rating: 125 PSI Maximum
 Lead Free Brass Construction

TBD510CQTX
Group 1 - \$138
Group 2 - \$154
Group 3 - \$170
Group 4 - \$213



MULTI-TURN STRAIGHT STOP VALVE WITH OVAL HANDLE.
 1/2 in. Female Inlet X 1/2 in. O.D. Compression Outlet
 Temperature Rating: 40° - 140° F
 Pressure Rating: 125 PSI Maximum
 Lead Free Brass Construction

TBD511C
Group 1 - \$108
Group 2 - \$119
Group 3 - \$137
Group 4 - \$172



MULTI-TURN STRAIGHT STOP VALVE WITH CROSS HANDLE.
 1/2 in. Female Inlet X 1/2 in. O.D. Compression Outlet
 Temperature Rating: 40° - 140° F
 Pressure Rating: 125 PSI Maximum
 Lead Free Brass Construction

TBD511CX
Group 1 - \$119
Group 2 - \$133
Group 3 - \$149
Group 4 - \$188

Trim By Design



MULTI-TURN STRAIGHT STOP VALVE WITH OVAL HANDLE. TBD512C
 1/2 in. Nom. Compression Inlet X 3/8 in. O.D. Compression Outlet
 Temperature Rating: 40° - 140° F
 Pressure Rating: 125 PSI Maximum
 Lead Free Brass Construction

Group 1 - \$90
Group 2 - \$116
Group 3 - \$146
Group 4 - \$183



MULTI-TURN STRAIGHT STOP VALVE WITH CROSS HANDLE. TBD512CX
 1/2 in. Nom. Compression Inlet X 3/8 in. O.D. Compression Outlet
 Temperature Rating: 40° - 140° F
 Pressure Rating: 125 PSI Maximum
 Lead Free Brass Construction

Group 1 - \$99
Group 2 - \$139
Group 3 - \$161
Group 4 - \$202



1/4-TURN STRAIGHT STOP VALVE WITH OVAL HANDLE. TBD512CQT
 1/2 in. Nom. Compression Inlet X 3/8 in. O.D. Compression Outlet
 1/4-Turn Ceramic Disc Cartridge
 Temperature Rating: 40° - 140° F
 Pressure Rating: 125 PSI Maximum
 Lead Free Brass Construction

Group 1 - \$136
Group 2 - \$152
Group 3 - \$171
Group 4 - \$214



1/4-TURN STRAIGHT STOP VALVE WITH LEVER HANDLE. TBD512CQTL
 1/2 in. Nom. Compression Inlet X 3/8 in. O.D. Compression Outlet
 1/4-Turn Ceramic Disc Cartridge
 Temperature Rating: 40° - 140° F
 Pressure Rating: 125 PSI Maximum
 Lead Free Brass Construction

Group 1 - \$149
Group 2 - \$166
Group 3 - \$186
Group 4 - \$233



1/4-TURN STRAIGHT STOP VALVE WITH CROSS HANDLE. TBD512CQTX
 1/2 in. Nom. Compression Inlet X 3/8 in. O.D. Compression Outlet
 1/4-Turn Ceramic Disc Cartridge
 Temperature Rating: 40° - 140° F
 Pressure Rating: 125 PSI Maximum
 Lead Free Brass Construction

Group 1 - \$149
Group 2 - \$166
Group 3 - \$186
Group 4 - \$233



MULTI-TURN STRAIGHT STOP VALVE WITH OVAL HANDLE. TBD513C
 1/2 in. Nom. Compression Inlet X 1/2 in. O.D. Compression Outlet
 Temperature Rating: 40° - 140° F
 Pressure Rating: 125 PSI Maximum
 Lead Free Brass Construction

Group 1 - \$90
Group 2 - \$116
Group 3 - \$146
Group 4 - \$183

Trim By Design



MULTI-TURN STRAIGHT STOP VALVE WITH CROSS HANDLE. TBD513CX
 1/2 in. Nom. Compression Inlet X 1/2 in. O.D. Compression Outlet
 Temperature Rating: 40° - 140° F
 Pressure Rating: 125 PSI Maximum
 Lead Free Brass Construction

Group 1 - \$99
Group 2 - \$139
Group 3 - \$161
Group 4 - \$202



1/2 INCH FLAT PATTERN SURE GRIP FLANGE. TBD200
 7/8 in. I.D. X 2-5/8 in. O.D. X 5/16 in. HT.
 Solid Brass Construction

Group 1 - \$18
Group 2 - \$23
Group 3 - \$28
Group 4 - \$35



5/8 INCH O.D. (1/2 INCH COMPRESSION) FLAT PATTERN SURE GRIP FLANGE. TBD5002
 5/8 in. I.D. X 2-5/8 in. O.D. X 5/16 in. HT.
 Solid Brass Construction

Group 1 - \$18
Group 2 - \$23
Group 3 - \$28
Group 4 - \$35



1/2 INCH I.P.S. BELL FLANGE. TBD5003
 7/8 in. I.D. X 2-3/8 in. O.D. X 1-1/4 in. HT.
 Solid Brass Construction

Group 1 - \$31
Group 2 - \$34
Group 3 - \$38
Group 4 - \$49



5/8 INCH O.D. (1/2 INCH COMPRESSION) BELL FLANGE. TBD5005
 5/8 in. I.D. X 2-3/8 in. O.D. X 1-1/4 in. HT.
 Solid Brass Construction

Group 1 - \$31
Group 2 - \$34
Group 3 - \$38
Group 4 - \$49

Trim By Design



3/8 INCH O.D. X 20 INCH COPPER SEMI RIGID LAVATORY SUPPLY LINE.

Formed Metal Nosepiece with Brass Insert
 Temperature Rating: 40° - 140° F
 Pressure Rating: 125 PSI Maximum
 Cut-to-Length for Professional Appearance

TBD521C **Group 1 - \$32**
Group 2 - \$44
Group 3 - \$58
Group 4 - \$73



1/2 INCH O.D. X 20 INCH COPPER SEMI RIGID LAVATORY SUPPLY LINE.

Formed Metal Nosepiece with Brass Insert
 Temperature Rating: 40° - 140° F
 Pressure Rating: 125 PSI Maximum
 Cut-to-Length for Professional Appearance

TBD523C **Group 1 - \$50**
Group 2 - \$55
Group 3 - \$63
Group 4 - \$79



3/8 INCH O.D. X 20 INCH COPPER SEMI RIGID TOILET SUPPLY LINE.

Reinforced Flat Nosepiece with Insert
 Temperature Rating: 40° - 140° F
 Pressure Rating: 125 PSI Maximum
 Cut-to-Length for Professional Appearance

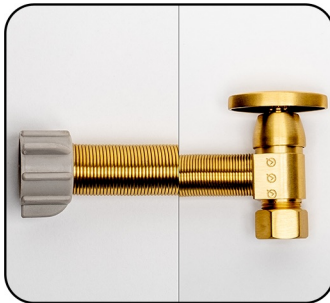
TBD526 **Group 1 - \$34**
Group 2 - \$47
Group 3 - \$62
Group 4 - \$79



1/2 INCH O.D. X 20 INCH COPPER SEMI RIGID TOILET SUPPLY LINE.

Reinforced Flat Nosepiece with Insert
 Temperature Rating: 40° - 140° F
 Pressure Rating: 125 PSI Maximum
 Cut-to-Length for Professional Appearance

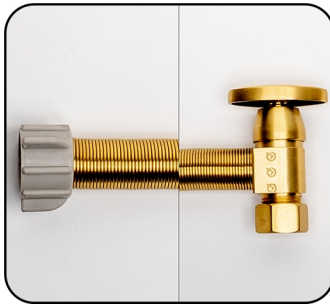
TBD528 **Group 1 - \$50**
Group 2 - \$55
Group 3 - \$63
Group 4 - \$79



DECORATIVE COVER FOR BRAIDED FLEXIBLE CONNECTORS.

Fits 3/8 in. O.D. Connectors
 Fits Connectors up to 12 inch Long
 STOP AND CONNECTOR NOT INCLUDED

TBD534 **Group 1 - N/A**
Group 2 - \$55
Group 3 - N/A
Group 4 - N/A



DECORATIVE COVER FOR BRAIDED FLEXIBLE CONNECTORS.

Fits 3/8 in. O.D. Connectors
 Fits Connectors up to 24 inch Long
 STOP AND CONNECTOR NOT INCLUDED

TBD535 **Group 1 - N/A**
Group 2 - \$75
Group 3 - N/A
Group 4 - N/A

Trim By Design



COMPRESSION TOILET KIT WITH OVAL HANDLE.

TBD540

Group 1 - \$163

1/2 in. Nom. Compression Inlet X 3/8 in. O.D. Compression Outlet

Group 2 - \$198

Multi-Turn Angle Stop Valve with Oval Handle

Group 3 - \$233

12 inch Flat Head Toilet Riser and Flange

Group 4 - \$296

Includes (1) Each TBD503C, TBD525 and TBD5002



COMPRESSION TOILET KIT WITH CROSS HANDLE.

TBD540X

Group 1 - \$173

1/2 in. Nom. Compression Inlet X 3/8 in. O.D. Compression Outlet

Group 2 - \$213

Multi-Turn Angle Stop Valve with Cross Handle

Group 3 - \$248

12 inch Flat Head Toilet Riser and Flange

Group 4 - \$315

Includes (1) Each TBD503CX, TBD525 and TBD5002



COMPRESSION TOILET KIT WITH OVAL HANDLE.

TBD541

Group 1 - \$163

1/2 in. Nom. Compression Inlet X 3/8 in. O.D. Compression Outlet

Group 2 - \$198

Multi-Turn Angle Stop Valve with Oval Handle

Group 3 - \$233

20 inch Flat Head Toilet Riser and Flange

Group 4 - \$296

Includes (1) Each TBD503C, TBD526 and TBD5002



COMPRESSION TOILET KIT WITH CROSS HANDLE.

TBD541X

Group 1 - \$173

1/2 in. Nom. Compression Inlet X 3/8 in. O.D. Compression Outlet

Group 2 - \$213

Multi-Turn Angle Stop Valve with Cross Handle

Group 3 - \$248

20 inch Flat Head Toilet Riser and Flange

Group 4 - \$315

Includes (1) Each TBD503CX, TBD526 and TBD5002



COMPRESSION TOILET KIT WITH OVAL HANDLE.

TBD541QT

Group 1 - \$193

1/2 in. Nom. Compression Inlet X 3/8 in. O.D. Compression Outlet

Group 2 - \$221

1/4-Turn Angle Stop Valve with Oval Handle

Group 3 - \$256

20 inch Flat Head Toilet Riser and Flange

Group 4 - \$326

Includes (1) Each TBD503CQT, TBD526 and TBD5002



COMPRESSION TOILET KIT WITH LEVER HANDLE.

TBD541QTL

Group 1 - \$198

1/2 in. Nom. Compression Inlet X 3/8 in. O.D. Compression Outlet

Group 2 - \$239

1/4-Turn Angle Stop Valve with Lever Handle

Group 3 - \$270

20 inch Flat Head Toilet Riser and Flange

Group 4 - \$342

Includes (1) Each TBD503CQTL, TBD526 and TBD5002

Trim By Design



COMPRESSION TOILET KIT WITH CROSS HANDLE.

TBD541QTX

1/2 in. Nom. Compression Inlet X 3/8 in. O.D. Compression Outlet
 1/4-Turn Angle Stop Valve with Cross Handle
 20 inch Flat Head Toilet Riser and Flange
 Includes (1) Each TBD503CQTX, TBD526 and TBD5002

Group 1 - \$198
Group 2 - \$239
Group 3 - \$270
Group 4 - \$342



COMPRESSION TOILET KIT WITH OVAL HANDLE.

TBD543

1/2 in. Nom. Compression Inlet X 1/2 in. O.D. Compression Outlet
 Multi-Turn Angle Stop Valve with Oval Handle
 20 inch Flat Head Toilet Riser and Flange
 Includes (1) Each TBD504C, TBD528 and TBD5002

Group 1 - \$193
Group 2 - \$208
Group 3 - \$239
Group 4 - \$303



COMPRESSION TOILET KIT WITH CROSS HANDLE.

TBD543X

1/2 in. Nom. Compression Inlet X 1/2 in. O.D. Compression Outlet
 Multi-Turn Angle Stop Valve with Cross Handle
 20 inch Flat Head Toilet Riser and Flange
 Includes (1) Each TBD504CX, TBD528 and TBD5002

Group 1 - \$203
Group 2 - \$224
Group 3 - \$255
Group 4 - \$323



COMPRESSION TOILET KIT WITH OVAL HANDLE.

TBD543QT

1/2 in. Nom. Compression Inlet X 1/2 in. O.D. Compression Outlet
 1/4-Turn Angle Stop Valve with Oval Handle
 20 inch Flat Head Toilet Riser and Flange
 Includes (1) Each TBD504CQT, TBD528 and TBD5002

Group 1 - \$199
Group 2 - \$223
Group 3 - \$262
Group 4 - \$332



COMPRESSION TOILET KIT WITH LEVER HANDLE.

TBD543QTL

1/2 in. Nom. Compression Inlet X 1/2 in. O.D. Compression Outlet
 1/4-Turn Angle Stop Valve with Lever Handle
 20 inch Flat Head Toilet Riser and Flange
 Includes (1) Each TBD504CQTL, TBD528 and TBD5002

Group 1 - \$214
Group 2 - \$244
Group 3 - \$271
Group 4 - \$343



COMPRESSION TOILET KIT WITH CROSS HANDLE.

TBD543QTX

1/2 in. Nom. Compression Inlet X 1/2 in. O.D. Compression Outlet
 1/4-Turn Angle Stop Valve with Cross Handle
 20 inch Flat Head Toilet Riser and Flange
 Includes (1) Each TBD504CQTX, TBD528 and TBD5002

Group 1 - \$214
Group 2 - \$244
Group 3 - \$271
Group 4 - \$343

Trim By Design



I.P.S. TOILET KIT WITH OVAL HANDLE.
 1/2 in. Female Inlet X 3/8 in. O.D. Compression Outlet
 Multi-Turn Angle Stop Valve with Oval Handle
 12 inch Flat Head Toilet Riser and Flange
 Includes (1) Each TBD501C, TBD525 and TBD200

TBD544 **Group 1** - \$166
Group 2 - \$189
Group 3 - \$222
Group 4 - \$282



I.P.S. TOILET KIT WITH CROSS HANDLE.
 1/2 in. Female Inlet X 3/8 in. O.D. Compression Outlet
 Multi-Turn Angle Stop Valve with Cross Handle
 12 inch Flat Head Toilet Riser and Flange
 Includes (1) Each TBD501CX, TBD525 and TBD200

TBD544X **Group 1** - \$177
Group 2 - \$202
Group 3 - \$234
Group 4 - \$300



I.P.S. TOILET KIT WITH OVAL HANDLE.
 1/2 in. Female Inlet X 3/8 in. O.D. Compression Outlet
 Multi-Turn Angle Stop Valve with Oval Handle
 20 inch Flat Head Toilet Riser and Flange
 Includes (1) Each TBD501C, TBD526 and TBD200

TBD545 **Group 1** - \$166
Group 2 - \$189
Group 3 - \$222
Group 4 - \$282



I.P.S. TOILET KIT WITH CROSS HANDLE.
 1/2 in. Female Inlet X 3/8 in. O.D. Compression Outlet
 Multi-Turn Angle Stop Valve with Cross Handle
 20 inch Flat Head Toilet Riser and Flange
 Includes (1) Each TBD501CX, TBD526 and TBD200

TBD545X **Group 1** - \$177
Group 2 - \$202
Group 3 - \$234
Group 4 - \$300



I.P.S. TOILET KIT WITH OVAL HANDLE.
 1/2 in. Female Inlet X 3/8 in. O.D. Compression Outlet
 1/4-Turn Angle Stop Valve with Oval Handle
 20 inch Flat Head Toilet Riser and Flange
 Includes (1) Each TBD501CQT, TBD526 and TBD200

TBD545QT **Group 1** - \$187
Group 2 - \$209
Group 3 - \$242
Group 4 - \$307



I.P.S. TOILET KIT WITH LEVER HANDLE.
 1/2 in. Female Inlet X 3/8 in. O.D. Compression Outlet
 1/4-Turn Angle Stop Valve with Lever Handle
 20 inch Flat Head Toilet Riser and Flange
 Includes (1) Each TBD501CQTL, TBD526 and TBD200

TBD545QTL **Group 1** - \$200
Group 2 - \$223
Group 3 - \$256
Group 4 - \$322

Trim By Design



I.P.S. TOILET KIT WITH CROSS HANDLE.

1/2 in. Female Inlet X 3/8 in. O.D. Compression Outlet
 1/4-Turn Angle Stop Valve with Cross Handle
 20 inch Flat Head Toilet Riser and Flange
 Includes (1) Each TBD501CQTX, TBD526 and TBD200

TBD545QTX **Group 1** - \$200
 Group 2 - \$223
 Group 3 - \$256
 Group 4 - \$322



I.P.S. TOILET KIT WITH NIPPLE AND OVAL HANDLE.

1/2 in. Female Inlet X 3/8 in. O.D. Compression Outlet
 Multi-Turn Angle Stop Valve with Oval Handle
 20 inch Flat Head Toilet Riser, 4 inch Nipple and Flange
 Includes (1) Each TBD501C, TBD526, TBD612C and TBD200

TBD548 **Group 1** - \$213
 Group 2 - \$236
 Group 3 - \$276
 Group 4 - \$350



I.P.S. TOILET KIT WITH NIPPLE AND CROSS HANDLE.

1/2 in. Female Inlet X 3/8 in. O.D. Compression Outlet
 Multi-Turn Angle Stop Valve with Cross Handle
 20 inch Flat Head Toilet Riser, 4 inch Nipple and Flange
 Includes (1) Each TBD501CX, TBD526, TBD612C and TBD200

TBD548X **Group 1** - \$224
 Group 2 - \$249
 Group 3 - \$288
 Group 4 - \$368



I.P.S. TOILET KIT WITH NIPPLE AND OVAL HANDLE.

1/2 in. Female Inlet X 3/8 in. O.D. Compression Outlet
 1/4-Turn Angle Stop Valve with Oval Handle
 20 inch Flat Head Toilet Riser, 4 inch Nipple and Flange
 Includes (1) Each TBD501CQT, TBD526, TBD612C and TBD200

TBD548QT **Group 1** - \$234
 Group 2 - \$256
 Group 3 - \$296
 Group 4 - \$375



I.P.S. TOILET KIT WITH NIPPLE AND LEVER HANDLE.

1/2 in. Female Inlet X 3/8 in. O.D. Compression Outlet
 1/4-Turn Angle Stop Valve with Lever Handle
 20 inch Flat Head Toilet Riser, 4 inch Nipple and Flange
 Includes (1) Each TBD501CQTL, TBD526, TBD612C and TBD200

TBD548QTL **Group 1** - \$247
 Group 2 - \$270
 Group 3 - \$310
 Group 4 - \$390



I.P.S. TOILET KIT WITH NIPPLE AND CROSS HANDLE.

1/2 in. Female Inlet X 3/8 in. O.D. Compression Outlet
 1/4-Turn Angle Stop Valve with Cross Handle
 20 inch Flat Head Toilet Riser, 4 inch Nipple and Flange
 Includes (1) Each TBD501CQTX, TBD526, TBD612C and TBD200

TBD548QTX **Group 1** - \$247
 Group 2 - \$270
 Group 3 - \$310
 Group 4 - \$390

Trim By Design



COMPRESSION TOILET KIT WITH OVAL HANDLE.
1/2 in. Nom. Compression Inlet X 3/8 in. O.D. Compression Outlet
Multi-Turn Straight Stop Valve with Oval Handle
20 inch Flat Head Toilet Riser and Flange
Includes (1) Each TBD512C, TBD526 and TBD5002

TBD571

Group 1 - \$168
Group 2 - \$192
Group 3 - \$233
Group 4 - \$296



COMPRESSION TOILET KIT WITH CROSS HANDLE.
1/2 in. Nom. Compression Inlet X 3/8 in. O.D. Compression Outlet
Multi-Turn Straight Stop Valve with Cross Handle
20 inch Flat head Toilet Riser and Flange
Includes (1) Each TBD512CX, TBD526 and TBD5002

TBD571X

Group 1 - \$197
Group 2 - \$210
Group 3 - \$248
Group 4 - \$315



COMPRESSION TOILET KIT WITH OVAL HANDLE.
1/2 in. Nom. Compression Inlet X 3/8 in. O.D. Compression Outlet
1/4-Turn Straight Stop Valve with Oval Handle
20 inch Flat Head Toilet Riser and Flange
Includes (1) Each TBD512CQT, TBD526 and TBD5002

TBD571QT

Group 1 - \$194
Group 2 - \$223
Group 3 - \$258
Group 4 - \$327



COMPRESSION TOILET KIT WITH LEVER HANDLE.
1/2 in. Nom. Compression Inlet X 3/8 in. O.D. Compression Outlet
1/4-Turn Straight Stop Valve with Lever Handle
20 inch Flat Head Toilet Riser and Flange
Includes (1) Each TBD512CQTL, TBD526 and TBD5002

TBD571QTL

Group 1 - \$207
Group 2 - \$237
Group 3 - \$273
Group 4 - \$346



COMPRESSION TOILET KIT WITH CROSS HANDLE.
1/2 in. Nom. Compression Inlet X 3/8 in. O.D. Compression Outlet
1/4-Turn Straight Stop Valve with Cross Handle
20 inch Flat Head Toilet Riser and Flange
Includes (1) Each TBD512CQTLX, TBD526 and TBD5002

TBD571QTX

Group 1 - \$207
Group 2 - \$237
Group 3 - \$273
Group 4 - \$346

Trim By Design



1-1/4 INCH X 1-1/2 INCH SINK KIT.

1/2 in. Female Inlet X 3/8 in. O.D. Compression Outlet
 Multi-Turn Angle Stop Valve with Oval Handle
 20 inch Semi Rigid Lavatory Risers, Flanges and P-Trap
 Includes (2) Each TBD501C, TBD521C, TBD200 and
 (1) Each TBD431

TBD425C **Group 1** - \$520
 Group 2 - \$599
 Group 3 - \$694
 Group 4 - \$876



1-1/4 INCH X 1-1/2 INCH SINK KIT.

1/2 in. Female Inlet X 3/8 in. O.D. Compression Outlet
 Multi-Turn Angle Stop Valve with Cross Handle
 20 inch Semi Rigid Lavatory Risers, Flanges and P-Trap
 Includes (2) Each TBD501CX, TBD521C, TBD200 and
 (1) Each TBD431

TBD425CX **Group 1** - \$542
 Group 2 - \$625
 Group 3 - \$718
 Group 4 - \$912



1-1/4 INCH X 1-1/2 INCH SINK KIT.

1/2 in. Female Inlet X 3/8 in. O.D. Compression Outlet
 1/4-Turn Angle Stop Valve with Oval Handle
 20 inch Semi Rigid Lavatory Risers, Flanges and P-Trap
 Includes (2) Each TBD501CQT, TBD521C, TBD200 and
 (1) Each TBD431

TBD425CQT **Group 1** - \$562
 Group 2 - \$639
 Group 3 - \$734
 Group 4 - \$926



1-1/4 INCH X 1-1/2 INCH SINK KIT.

1/2 in. Female Inlet X 3/8 in. O.D. Compression Outlet
 1/4-Turn Angle Stop Valve with Lever Handle
 20 inch Semi Rigid Lavatory Risers, Flanges and P-Trap
 Includes (2) Each TBD501CQTL, TBD521C, TBD200 and
 (1) Each TBD431

TBD425CQTL **Group 1** - \$588
 Group 2 - \$667
 Group 3 - \$762
 Group 4 - \$956



1-1/4 INCH X 1-1/2 INCH SINK KIT.

1/2 in. Female Inlet X 3/8 in. O.D. Compression Outlet
 1/4-Turn Angle Stop Valve with Cross Handle
 20 inch Semi Rigid Lavatory Risers, Flanges and P-Trap
 Includes (2) Each TBD501CQTX, TBD521C, TBD200 and
 (1) Each TBD431

TBD425CQTX **Group 1** - \$588
 Group 2 - \$667
 Group 3 - \$762
 Group 4 - \$956

Trim By Design



1-1/4 INCH X 1-1/2 INCH SINK KIT.

TBD426C

Group 1 - \$526

1/2 in. Nom. Compression Inlet X 3/8 in. O.D. Compression Outlet

Group 2 - \$617

Multi-Turn Angle Stop Valve with Oval Handle

Group 3 - \$716

20 inch Semi Rigid Lavatory Risers, Flanges and P-Trap

Group 4 - \$904

Includes (2) Each TBD503C, TBD521C, TBD5002 and

(1) Each TBD431



1-1/4 INCH X 1-1/2 INCH SINK KIT.

TBD426CX

Group 1 - \$548

1/2 in. Nom. Compression Inlet X 3/8 in. O.D. Compression Outlet

Group 2 - \$647

Multi-Turn Angle Stop Valve with Cross Handle

Group 3 - \$746

20 inch Semi Rigid Lavatory Risers, Flanges and P-Trap

Group 4 - \$942

Includes (2) Each TBD503CX, TBD521C, TBD5002 and

(1) Each TBD431



1-1/4 INCH X 1-1/2 INCH SINK KIT.

TBD426CQT

Group 1 - \$574

1/2 in. Nom. Compression Inlet X 3/8 in. O.D. Compression Outlet

Group 2 - \$663

1/4-Turn Angle Stop Valve with Oval Handle

Group 3 - \$762

20 inch Semi Rigid Lavatory Risers, Flanges and P-Trap

Group 4 - \$964

Includes (2) Each TBD503CQT, TBD521C, TBD5002 and

(1) Each TBD431



1-1/4 INCH X 1-1/2 INCH SINK KIT.

TBD426CQTL

Group 1 - \$584

1/2 in. Nom. Compression Inlet X 3/8 in. O.D. Compression Outlet

Group 2 - \$693

1/4-Turn Angle Stop Valve with Lever Handle

Group 3 - \$790

20 inch Semi Rigid Lavatory Risers, Flanges and P-Trap

Group 4 - \$996

Includes (2) Each TBD503CQTL, TBD521C, TBD5002 and

(1) Each TBD431



1-1/4 INCH X 1-1/2 INCH SINK KIT.

TBD426CQTX

Group 1 - \$584

1/2 in. Nom. Compression Inlet X 3/8 in. O.D. Compression Outlet

Group 2 - \$693

1/4-Turn Angle Stop Valve with Cross Handle

Group 3 - \$790

20 inch Semi Rigid Lavatory Risers, Flanges and P-Trap

Group 4 - \$996

Includes (2) Each TBD503CQTX, TBD521C, TBD5002 and

(1) Each TBD431

Trim By Design



1-1/4 INCH X 1-1/4 INCH SINK KIT.

1/2 in. Nom. Compression Inlet X 3/8 in. O.D. Compression Outlet
 1/4-Turn Angle Stop Valve with Oval Handle
 20 inch Semi Rigid Lavatory Risers, Flanges and Cylinder Trap
 Includes (2) Each TBD503CQT, TBD521C, TBD5002 and
 (1) Each TBD440

TBD427CQT **Group 1 - \$692**
Group 2 - \$792
Group 3 - \$892
Group 4 - \$1127



1-1/4 INCH X 1-1/4 INCH SINK KIT.

1/2 in. Nom. Compression Inlet X 3/8 in. O.D. Compression Outlet
 1/4-Turn Angle Stop Valve with Lever Handle
 20 inch Semi Rigid Lavatory Risers, Flanges and Cylinder Trap
 Includes (2) Each TBD503CQTL, TBD521C, TBD5002 and
 (1) Each TBD440

TBD427CQTL **Group 1 - \$702**
Group 2 - \$822
Group 3 - \$920
Group 4 - \$1159



1-1/4 INCH X 1-1/4 INCH SINK KIT.

1/2 in. Nom. Compression Inlet X 3/8 in. O.D. Compression Outlet
 1/4-Turn Angle Stop Valve with Cross Handle
 20 inch Semi Rigid Lavatory Risers, Flanges and Cylinder Trap
 Includes (2) Each TBD503CQTX, TBD521C, TBD5002 and
 (1) Each TBD440

TBD427CQTX **Group 1 - \$702**
Group 2 - \$822
Group 3 - \$920
Group 4 - \$1159



COMPRESSION LAVATORY KIT WITH OVAL HANDLE.

1/2 in. Nom. Compression Inlet X 3/8 in. O.D. Compression Outlet
 Multi-Turn Angle Stop Valve with Oval Handle
 20 inch Semi Rigid Lavatory Riser and Flange
 Includes (2) Each TBD503C, TBD521C and TBD5002

TBD550C **Group 1 - \$322**
Group 2 - \$390
Group 3 - \$458
Group 4 - \$582



COMPRESSION LAVATORY KIT WITH CROSS HANDLE.

1/2 in. Nom. Compression Inlet X 3/8 in. O.D. Compression Outlet
 Multi-Turn Angle Stop Valve with Cross Handle
 20 inch Semi Rigid Lavatory Riser and Flange
 Includes (2) Each TBD503CX, TBD521C and TBD5002

TBD550CX **Group 1 - \$342**
Group 2 - \$420
Group 3 - \$488
Group 4 - \$620

Trim By Design



COMPRESSION LAVATORY KIT WITH OVAL HANDLE. TBD550CQT **Group 1 - \$382**
 1/2 in. Nom. Compression Inlet X 3/8 in. O.D. Compression Outlet **Group 2 - \$436**
 1/4-Turn Angle Stop Valve with Oval Handle **Group 3 - \$504**
 20 inch Semi Rigid Lavatory Riser and Flange **Group 4 - \$642**
 Includes (2) Each TBD503CQT, TBD521C and TBD5002



COMPRESSION LAVATORY KIT WITH LEVER HANDLE. TBD550CQTL **Group 1 - \$392**
 1/2 in. Nom. Compression Inlet X 3/8 in. O.D. Compression Outlet **Group 2 - \$466**
 1/4-Turn Angle Stop Valve with Lever Handle **Group 3 - \$532**
 20 inch Semi Rigid Lavatory Riser and Flange **Group 4 - \$674**
 Includes (2) Each TBD503CQTL, TBD521C and TBD5002



COMPRESSION LAVATORY KIT WITH CROSS HANDLE. TBD550CQTX **Group 1 - \$392**
 1/2 in. Nom. Compression Inlet X 3/8 in. O.D. Compression Outlet **Group 2 - \$466**
 1/4-Turn Angle Stop Valve with Cross Handle **Group 3 - \$532**
 20 inch Semi Rigid Lavatory Riser and Flange **Group 4 - \$674**
 Includes (2) Each TBD503CQTX, TBD521C and TBD5002



I.P.S. LAVATORY KIT WITH NIPPLE AND OVAL HANDLE. TBD553C **Group 1 - \$422**
 1/2 in. Female Inlet X 3/8 in. O.D. Compression Outlet **Group 2 - \$466**
 Multi-Turn Angle Stop Valve with Oval Handle **Group 3 - \$544**
 20 inch Semi Rigid Lavatory Riser, 4 inch Nipple and Flange **Group 4 - \$690**
 Includes (2) Each TBD501C, TBD521C, TBD612C and TBD200



I.P.S. LAVATORY KIT WITH NIPPLE AND CROSS HANDLE. TBD553CX **Group 1 - \$444**
 1/2 in. Female Inlet X 3/8 in. O.D. Compression Outlet **Group 2 - \$492**
 Multi-Turn Angle Stop Valve with Cross Handle **Group 3 - \$568**
 20 inch Semi Rigid Lavatory Riser, 4 inch Nipple and Flange **Group 4 - \$726**
 Includes (2) Each TBD501CX, TBD521C, TBD612C and TBD200

Trim By Design



I.P.S. LAVATORY KIT WITH NIPPLE AND OVAL HANDLE. TBD553CQT

1/2 in. Female Inlet X 3/8 in. O.D. Compression Outlet

1/4-Turn Angle Stop Valve with Oval Handle

20 inch Semi Rigid Lavatory Riser, 4 inch Nipple and Flange

Includes (2) Each TBD501CQT, TBD521C, TBD612C and TBD200

Group 1 - \$464

Group 2 - \$506

Group 3 - \$584

Group 4 - \$740



I.P.S. LAVATORY KIT WITH NIPPLE AND LEVER HANDLE. TBD553CQTL

1/2 in. Female Inlet X 3/8 in. O.D. Compression Outlet

1/4-Turn Angle Stop Valve with Lever Handle

20 inch Semi Rigid Lavatory Riser, 4 inch Nipple and Flange

Includes (2) Each TBD501CQTL, TBD521C, TBD612C and TBD200

Group 1 - \$490

Group 2 - \$534

Group 3 - \$612

Group 4 - \$770



I.P.S. LAVATORY KIT WITH NIPPLE AND CROSS HANDLE. TBD553CQTX

1/2 in. Female Inlet X 3/8 in. O.D. Compression Outlet

1/4-Turn Angle Stop Valve with Cross Handle

20 inch Semi Rigid Lavatory Riser, 4 inch Nipple and Flange

Includes (2) Each TBD501CQTX, TBD521C, TBD612C and TBD200

Group 1 - \$490

Group 2 - \$534

Group 3 - \$612

Group 4 - \$770

Trim By Design



FRONT MOUNT STANDARD TOILET TANK LEVER.
Solid Brass Construction

TBD600
Group 1 - \$70
Group 2 - \$78
Group 3 - \$87
Group 4 - \$109



KOHLER TYPE TANK LEVER.
Fits Cimarron & Memoirs Toilets

TBD6011
Group 1 - \$35
Group 2 - \$49
Group 3 - \$58
Group 4 - \$73



TOTO TYPE TANK LEVER.
Fits Toto Ultramax, Carolina & Ultimex Toilets

TBD602
Group 1 - \$35
Group 2 - \$49
Group 3 - \$58
Group 4 - \$73



TOTO TYPE TANK LEVER.
Fits Toto Bristol, Drake & Vespin Toilets

TBD6021
Group 1 - \$35
Group 2 - \$49
Group 3 - \$58
Group 4 - \$73



SIDE MOUNT TANK LEVER.
Fits Toto Promenade, Dartmouth, Carrolton & Whitney Toilets

TBD6022
Group 1 - \$97
Group 2 - \$108
Group 3 - \$129
Group 4 - \$161



FRONT MOUNT TRADITIONAL TOILET TANK LEVER.
Solid Brass Construction

TBD603
Group 1 - \$95
Group 2 - \$105
Group 3 - \$112
Group 4 - \$140

Trim By Design



MULTI-FUNCTION TRADITIONAL TANK LEVER.
 Front and/or Side Mount
 Solid Brass Construction

TBD605 **Group 1 - \$97**
Group 2 - \$108
Group 3 - \$129
Group 4 - \$161



1/2 INCH X 4 INCH BRASS NIPPLE.
 Lead Free Brass Construction
 (Custom lengths available, please call)

TBD612C **Group 1 - \$39**
Group 2 - \$43
Group 3 - \$54
Group 4 - \$68



1/2 INCH X 6 INCH BRASS NIPPLE.
 Lead Free Brass Construction
 (Custom lengths available, please call)

TBD613C **Group 1 - \$58**
Group 2 - \$65
Group 3 - \$82
Group 4 - \$104



LOG LIGHTER FLANGE AND KEY.
 3/4 inch Female Inlet Flange
 5/16 in. x 3 in. Key
 Solid Brass Construction

TBD700 **Group 1 - \$72**
Group 2 - \$92
Group 3 - \$118
Group 4 - \$148



4 INCH O.D. CLEANOUT COVER WITH SCREW.
 1/4-20 X 2 in. Long Screw

TBD715 **Group 1 - \$30**
Group 2 - \$45
Group 3 - \$64
Group 4 - N/A



6 INCH O.D. CLEANOUT COVER WITH SCREW.
 1/4-20 X 2 in. Long Screw

TBD716 **Group 1 - \$40**
Group 2 - \$70
Group 3 - \$99
Group 4 - N/A

Trim By Design



RECESSED TOILET PAPER HOLDER.

Spring Loaded Brass Roller
Includes Wall Mount Clamp
Solid Brass Construction

TBD805

Group 1 - \$179
Group 2 - \$199
Group 3 - \$267
Group 4 - N/A



1-HOLE OVAL REMODELING COVER PLATE.

5 inch Hole Opening
Includes Screws and Brackets

TBD824

Group 1 - \$99
Group 2 - \$175
Group 3 - POA
Group 4 - N/A



1-HOLE REMODELING COVER PLATE.

5 inch Hole Opening
Includes Screws and Brackets

TBD825

Group 1 - \$76
Group 2 - \$140
Group 3 - POA
Group 4 - N/A



10 INCH FAUCET DECK COVER PLATE.

10 inch Width X 2-1/2 inch Depth
Used to Cover 8 inch Faucet Holes
1-1/2 inch Opening
Solid Brass Construction

TBD830

Group 1 - \$104
Group 2 - \$115
Group 3 - \$134
Group 4 - N/A



6 INCH FAUCET DECK COVER PLATE.

6 inch Width X 2-7/16 inch Depth
Used to Cover 4 inch Faucet Holes
1-1/2 inch Opening
Solid Brass Construction

TBD832

Group 1 - \$73
Group 2 - \$81
Group 3 - \$95
Group 4 - N/A

Trim By Design

One-Year Functionality Warranty

Trim By Design, Inc. products are warranted to be free of defects in material and workmanship for one (1) year from date of purchase by the original purchaser. The warranty is not transferable and extended solely to the original purchaser of the product(s). Products must be installed in accordance with the Trim By Design installation instructions provided with the products. You may call 323-722-4233 or email us at sales@trimbydesign.com for copies of the installation instructions.

Trim By Design will, at its option, either repair, credit or provide one-time product replacement with the same or similar current model of the product. If repair or replacement is not commercially practical or cannot be made in a timely manner, then Trim By Design, Inc. will provide a credit for the product.

See Exclusions from Coverage below.

Drainage and Strainer Finish Limited Warranty

Polished Chrome (26) and PVD finishes for kitchen sink strainers, disposal flanges, disposal stoppers, bar strainers, basket strainers including bath and lavatory drains and components are warranted for one (1) year from the date of the Original Purchase.

Products must be installed in accordance with the Trim By Design installation instructions provided with the products.

All other finishes have no warranty.

Product Finish Limited Warranty

Trim By Design warrants all finishes to be free of defects in material and workmanship during normal residential usage to the "original purchaser" for ten (10) years from the date the product was purchased by the "original purchaser".

Uncoated finishes such as Polished Brass Uncoated (03N), do naturally weather and change color over time are not warranted.

See Exclusions from Coverage below.

Commercial Warranty

Trim By Design warrants its products installed in an industrial, commercial application business use upon the same terms and conditions and exclusions applied to residential users to be free of defects in material, finishes (including PVD) and workmanship with the exception that warranty periods are reduced to one (1) year from date of purchase by the "original purchaser".

Maintenance and Product Care

Proper maintenance and care is required to preserve all finishes. Failure to properly maintain the product finish may void the product warranty. Do not use abrasive material such as a brush or scouring pad and cleaning products that contain ammonia, bleach, detergents and alcohol should not be used. Using brass or silver polish on products may result in damage to the finish and therefore should not be used. Products may periodically be cleaned or waxed with non-abrasive compounds, such as Flitz or Faucet Brite. Always test cleaning solution on an inconspicuous area before applying to the entire surface. For complete care requirements and recommendations, please visit our website at www.trimbydesign.com

See Exclusions from Coverage below.

Exclusions from Coverage

Trim By Design shall have no obligation under this warranty for leaks or damages caused by abuse, improper installation, temperatures below 41 degrees and above 140 degrees Fahrenheit, water pressure over 125 psi and Acts of Nature or Force Majeure. This Warranty does not cover labor charges, installation or other incidental or consequential cost or damages occurring during the removal, transportation, return or installation of Products or replacement Products. Products sold to customers for display use are not meant for resale and are not covered under any functional or finish warranty.

Some states do not allow exclusion of limitations of incidental or consequential damages, so the above limitation may not apply to you.

TBD

TRIM BY DESIGN
DECORATIVE TRIM & ACCESSORIES

Catalog/Price List 2022

P.O. Box 227278
Commerce, Ca 90022
tel: (888) TBD-TRIM (823-8746)
fax: (877) 329-8746
sales@TrimByDesign.com
www.TrimByDesign.com

This catalog was designed and printed in the USA.

