

TBD

TRIM BY DESIGN

DECORATIVE TRIM & ACCESSORIES

2026

METAL FINISHES



Code 01/03/03N
Polished Brass - PVD
Polished Brass
Polished Brass
Uncoated
Price Group 2



Code 04
Satin Brass
Price Group 2



Code 06
Antique Brass
Price Group 3



Code 07
Brushed Bronze
Price Group 3



Code 08
Polished Copper
Price Group 3



Code 09
Antique Copper
Price Group 3



Code 10
Aged Copper
(Tumbled Copper)
Price Group 3



Code 14
Oil Rubbed Bronze
Price Group 2



Code 15
Polished Nickel
Price Group 2



Code 16
Pewter
(Antique Nickel)
Price Group 3



Code 17
Brushed Nickel
(Satin Nickel)
Price Group 2



Code 20
Stainless Steel
Price Group 2



Code 21
Black Stainless
Price Group 4



Code 22
Polished Gold -
PVD
Price Group 4



Code 23
Satin Gold - PVD
Price Group 4



Code 26
Polished Chrome
Price Group 1



Code 27
Satin Chrome
Price Group 2



Code 40+
Sienna Bronze
(Venetian Bronze)
Price Group 3



Code 50
White
Price Group 2



Code 51
Almond
Price Group 2



Code 54
Black
(Gloss Black)
Price Group 2



Code 56
Matte Black
(Flat Black)
Price Group 2



Code 65
Biscuit
Price Group 2

**Living or Uncoated finishes are not warranted and available on selected items

+Venetian Bronze is a Trademark of Delta Faucet Company

Actual product finish may vary from finishes shown in the catalog and website

*Go to www.trimbydesign.com for a current list of available finishes on each product

FINISH DESCRIPTIONS

Code No.	Product Finishes	Price Group
26	Polished Chrome	1
01	Polished Brass - PVD	2
03	Polished Brass Coated	2
03N**	Polished Brass Uncoated	2
04	Satin Brass	2
14	Oil Rubbed Bronze	2
15	Polished Nickel	2
17	Brushed Nickel (Satin Nickel)	2
20	Stainless Steel	2
27	Satin Chrome	2
50	White	2
51	Almond	2
54	Black (Gloss Black)	2
56	Matte Black (Flat Black)	2
65	Biscuit	2
06	Antique Brass	3
07	Brushed Bronze	3
08	Polished Copper	3
09	Antique Copper	3
10	Aged Copper	3
16	Pewter (Antique Nickel)	3
40+	Sienna Bronze (Venetian Bronze)	3
21	Black Stainless	4
22	Polished Gold	4
23	Satin Gold	4

****Living or Uncoated finishes are not warranted and available on selected items**

+Venetian Bronze is a Trademark of Delta Faucet Company

Actual product finished may vary from finishes shown in the catalog

***Go to www.trimbydesign.com for a current list available finishes on each product**

Trim By Design

TERMS AND CONDITIONS

Minimum Order: Minimums apply where stated or \$35.00 net per invoice.

Order Placement: All orders must be submitted via e-mail sales@trimbydesign.com.

Pricing: All prices are listed in U.S. Currency. All prices, shipping, packaging or handling charges are subject to change without notice. All orders will be invoiced at prices prevailing at the time of the order. Publisher assumes no responsibility for typographical errors.

Product Changes: We reserve the right to discontinue, alter, modify, or redesign products and finishes without notice.

Claims: Upon delivery, if there is visible damage to the carton, claims against damaged and/or shortages must be made at the time of receipt against the carrier. Shortages, damaged merchandise, billing errors, etc., must be reported within 3 days of receipt of merchandise.

FREIGHT

All orders will be shipped prepaid and bill. Shipments are F.O.B. Montebello, CA. Full freight is allowed on ground shipments of \$1,200.00 net value when shipped to the customer's place of business within the continental U.S.A. Trim By Design reserves the right to ship by method of our choosing.

RETURN GOOD POLICY

All returns must be accompanied by a Trim By Design Return Goods Authorization number, issued by Trim By Design. Items returned without authorization will be disposed of without credit being issued.

- All return authorization requests must be made by e-mail rga@trimbydesign.com within 90 days of the original invoice date.
- Trim By Design does not even exchange or swap merchandise.
- Merchandise must be new and in saleable condition.
- All parts and / or components must be returned in order to accept returned merchandise.
- No returns on special orders or discontinued items.
- All returns must be made freight prepaid by sender and the sender must assume all responsibility for shipping. Trim By Design reserves the right to limit and / or refuse any returns at their discretion.

Trim By Design, Inc. shall not be held responsible for any liability associated with misprints, typographical errors or pricing discrepancies in this publication.

Trim By Design

TABLE OF CONTENTS

Terms & Conditions	C	Reverse Osmosis Air Gap	5
Warranty	80	Roman Tub Drain Top	41
Table of Contents	D	Shower Accessories	19
Air Gaps	1-2	Shower Arms	16-19
Bathtub Spouts	21-22	Shower Arms, Ceiling Mount	19
Bathtub Trim	23-25	Shower Heads	20
Bathtub Trim Kits	26-28	Shower Drain Trim	41-42
Bath Waste & Overflow (Brass)	29-32	Shower Drains	43
Bath Waste & Overflow (Plastic)	33-36	Sink Drain Accessories	51-54
Cable Operated Bath Waste	37-40	Sink Strainers, Bar Sink	10
Clean Out Covers	78	Sink Strainers, Kitchen	9-10
Faucet (Sink) Hole Cover	2	Sink / Lavatory Trim Kits*	71-74
Faucet Deck Plates	79	Sink P-Traps	55-56
Flanges, Shower Arm	15	Slip Joint Nuts	58
Flanges, Sink P-Trap	57-58	Bottle / Cylinder Trap	57
Flanges, Water Stops	65	Soap & Lotion Dispensers	6
Garbage Disposal Flange & Stoppers	7-8	Tank Levers	77-78
Garbage Disposal Air Switches	11-14	Tissue Holder	79
Lavatory Sink Drains	44-50	Toilet Supply Kits*	67-70
Lavatory Supply Kits*	74-76	Water Dispensers*	3-5
Log Lighter Trim	78	Water Stops, ¼ Turn*	59-62
Nipples, Brass	78	Water Stops, Compression*	62-64
Remodeling Plates	79	Water Supply Lines, Risers*	66

***Lead Free Products Comply with NSF/ANSI 61-Annex G Standards**

PHONE: 1-888-TBD-TRIM (823-8746)

FAX: 1-877-FAX-TRIM (329-8746)

E-MAIL: sales@trimbydesign.com

Trim By Design



AIR GAP COMPLETE.

Requires 1-1/4 inch to 1-1/2 inch Mounting Hole
Air Gap Cap Covers Entire White Air Gap Body Base
Durable Plastic Air Gap Body
Solid Brass Cap (Cover) and Trim Ring
IAPMO / UPC Listed

TBD100

Group 1 - \$59
Group 2 - \$69
Group 3 - \$84
Group 4 - \$105



TRADITIONAL AIR GAP COMPLETE.

Requires 1-1/4 inch to 1-1/2 inch Mounting Hole
Air Gap Cap Covers Entire White Air Gap Body Base
Durable Plastic Air Gap Body
Solid Brass Cap (Cover) and Trim Ring
IAPMO / UPC Listed

TBD102

Group 1 - \$59
Group 2 - \$69
Group 3 - \$84
Group 4 - \$105



CONTEMPORARY AIR GAP COMPLETE.

Requires 1-1/4 inch to 1-1/2 inch Mounting Hole
Air Gap Cap Covers Entire White Air Gap Body Base
Durable Plastic Air Gap Body
Solid Brass Cap (Cover)
IAPMO / UPC Listed

TBD106

Group 1 - \$116
Group 2 - \$127
Group 3 - \$149
Group 4 - \$186



DUAL AIR GAP COMPLETE.

Requires 1-1/2 inch Mounting Hole
Air Gap Cap Covers Entire White Air Gap Body Base
High Flow Plastic Air Gap Body Design
Includes (1) Each Adapter for RO Port or
2nd Dishwasher
Solid Brass Cap (Cover)
IAPMO / UPC Listed

TBD108

Group 1 - \$239
Group 2 - \$259
Group 3 - \$309
Group 4 - \$386

Trim By Design



DUAL AIR GAP COMPLETE.

Requires 1-1/2 inch Mounting Hole
Air Gap Cap Covers Entire White Air Gap Body Base
High Flow Plastic Air Gap Body Design
Includes (1) Each Adapter for RO Port or
2nd Dishwasher
Solid Brass Cap (Cover)
IAPMO / UPC Listed

TBD109

Group 1 - \$239
Group 2 - \$259
Group 3 - \$309
Group 4 - \$386



AIR GAP CAP WITH TRIM RING.

Air Gap Cap Covers Entire White Air Gap Body Base
Solid Brass Cap (Cover) and Trim Ring

TBD101

Group 1 - \$56
Group 2 - \$64
Group 3 - \$79
Group 4 - \$100



TRADITIONAL AIR GAP CAP WITH TRIM RING.

Air Gap Cap Covers Entire White Air Gap Body Base
Solid Brass Cap (Cover) and Trim Ring

TBD103

Group 1 - \$56
Group 2 - \$64
Group 3 - \$79
Group 4 - \$100



2 INCH SINK HOLE COVER.

2 inch Diameter
2 inch Mounting Shank (Screw)
Covers Unused Sink Hole
Solid Brass Top

TBD110

Group 1 - \$42
Group 2 - \$49
Group 3 - \$56
Group 4 - \$70

Trim By Design

**WATER DISPENSER FAUCET
WITH BRASS TIP AND HANDLE.**

Requires 1/2 inch to 1-1/2 inch Mounting Hole
8-1/4 inch Height
5 inch Spout Reach
3-1/4 inch Stainless Steel Inlet Shank
Color Matched Brass Tip and Handle
Cold Water Inlet Only
Lead Free Brass Construction

TBD1201C **Group 1 - \$175**
Group 2 - \$199
Group 3 - \$265
Group 4 - \$331

**WATER DISPENSER FAUCET
WITH BRASS TIP AND HANDLE.**

Requires 1/2 inch to 1-1/2 inch Mounting Hole
8-1/4 inch Height
3 inch Spout Reach
3-1/4 inch Stainless Steel Inlet Shank
Color Matched Brass Tip and Handle
Cold Water Inlet Only
Lead Free Brass Construction

TBD1203C **Group 1 - \$199**
Group 2 - \$222
Group 3 - \$292
Group 4 - \$365

**DELUXE LEVER HANDLE
WATER DISPENSER FAUCET.**

Requires 1/2 inch to 1-1/2 inch Mounting Hole
11-1/4 inch Height
4-1/2 inch Spout Reach
3-1/4 inch Stainless Steel Inlet Shank
1/4-Turn Ceramic Disc Cartridge
Cold Water Inlet Only
Lead Free Brass Construction

TBD121C **Group 1 - \$299**
Group 2 - \$379
Group 3 - \$444
Group 4 - \$556

**DELUXE LEVER HANDLE
WATER DISPENSER FAUCET.**

Requires 1/2 inch to 1-1/2 inch Mounting Hole
9-1/2 inch Height
3-1/2 inch Spout Reach
3-1/4 inch Stainless Steel Inlet Shank
1/4-Turn Ceramic Disc Cartridge
Cold Water Inlet Only
Lead Free Brass Construction

TBD1211C **Group 1 - \$299**
Group 2 - \$379
Group 3 - \$444
Group 4 - \$556

Trim By Design



DELUXE CROSS HANDLE WATER DISPENSER FAUCET.

Requires 1/2 inch to 1-1/2 inch Mounting Hole
11-1/4 inch Height
4-1/2 inch Spout Reach
3-1/4 inch Stainless Steel Inlet Shank
1/4-Turn Ceramic Disc Cartridge
Cold Water Inlet Only
Lead Free Brass Construction

TBD122C

Group 1 - \$299
Group 2 - \$379
Group 3 - \$444
Group 4 - \$556



DELUXE LEVER HANDLE WATER DISPENSER FAUCET.

Requires 1/2 inch to 1-1/2 inch Mounting Hole
11 inch Height
5 inch Spout Reach
3-1/4 inch Stainless Steel Inlet Shank
1/4-Turn Ceramic Disc Cartridge
Cold Water Inlet Only
Lead Free Brass Construction

TBD124C

Group 1 - \$299
Group 2 - \$379
Group 3 - \$444
Group 4 - \$556



CONTEMPORARY WATER DISPENSER FAUCET.

Requires 1/2 inch to 1-1/2 inch Mounting Hole
11 inch Height
4-1/2 inch Spout Reach
3-1/4 inch Stainless Steel Inlet Shank
1/4-Turn Ceramic Disc Cartridge
Cold Water Inlet Only
Lead Free Brass Construction

TBD123C

Group 1 - \$360
Group 2 - \$425
Group 3 - \$599
Group 4 - \$749



CONTEMPORARY WATER DISPENSER FAUCET.

Requires 1/2 inch to 1-1/2 inch Mounting Hole
8-1/4 inch Height
3-1/2 inch Spout Reach
3-1/4 inch Stainless Steel Inlet Shank
1/4-Turn Ceramic Disc Cartridge
Cold Water Inlet Only
Lead Free Brass Construction

TBD1231C

Group 1 - \$360
Group 2 - \$425
Group 3 - \$599
Group 4 - \$749

Trim By Design



TRADITIONAL WATER DISPENSER FAUCET WITH BRASS TIP AND HANDLE.

Requires 1/2 inch to 1-1/2 inch Mounting Hole
8-1/4 inch Height
5 inch Spout Reach
3-1/4 inch Stainless Steel Inlet Shank
Color Matched Brass Tip and Handle
Cold Water Inlet Only
Lead Free Brass Construction

TBD1204C **Group 1** - \$199
Group 2 - \$222
Group 3 - \$292
Group 4 - \$365



TRADITIONAL WATER DISPENSER FAUCET WITH BRASS TIP AND HANDLE.

Requires 1/2 inch to 1-1/2 inch Mounting Hole
8-1/4 inch Height
3 inch Spout Reach
3-1/4 inch Stainless Steel Inlet Shank
Color Matched Brass Tip and Handle
Cold Water Inlet Only
Lead Free Brass Construction

TBD1202C **Group 1** - \$199
Group 2 - \$222
Group 3 - \$292
Group 4 - \$365



WATER DISPENSER FAUCET.

Requires 1/2 inch to 1-1/2 inch Mounting Hole
6-1/2 inch Height
3 inch Spout Reach
Cold Water Inlet Only
Lead Free Brass Construction

TBD120C **Group 1** - \$159
Group 2 - \$184
Group 3 - \$245

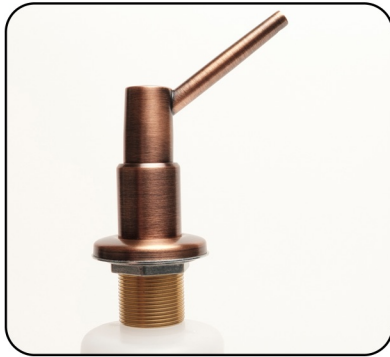


REVERSE OSMOSIS AIR GAP.

Requires 1-1/4 inch Mounting Hole
Includes 6 ft. of 3/8 in. and 1/4 in. Poly Tube
Mounting Hardware
For All Trim By Design Water Dispensers
Solid Brass Construction

TBD128 **Group 1** - \$85
Group 2 - \$99
Group 3 - \$120
Group 4 - \$172

Trim By Design



SOAP AND LOTION DISPENSER.

Requires 1-1/4 inch to 1-1/2 inch Mounting Hole
2-1/2 inch Spout Reach
12.5 Ounce Bottle Capacity
Refillable from Above Sink Deck
Solid Brass Construction

TBD130

Group 1 - \$116
Group 2 - \$126
Group 3 - \$144
Group 4 - \$180



SOAP AND LOTION DISPENSER.

Requires 1-1/4 inch to 1-1/2 inch Mounting Hole
3-3/4 inch Spout Reach
12.5 Ounce Bottle Capacity
Refillable from Above Sink Deck
Solid Brass Construction

TBD131

Group 1 - \$135
Group 2 - \$159
Group 3 - \$199
Group 4 - \$250



SOAP AND LOTION DISPENSER.

Requires 1-1/4 inch to 1-1/2 inch Mounting Hole
3-1/2 inch Spout Reach
12.5 Ounce Bottle Capacity
Refillable from Above Sink Deck
Solid Brass Construction

TBD132

Group 1 - \$105
Group 2 - \$119
Group 3 - \$139
Group 4 - \$185



SOAP AND LOTION DISPENSER.

Requires 1-1/4 inch to 1-1/2 inch Mounting Hole
3 inch Spout Reach
12.5 Ounce Bottle Capacity
Refillable from Above Sink Deck
Solid Brass Construction

TBD133

Group 1 - \$105
Group 2 - \$119
Group 3 - \$139
Group 4 - \$185



SOAP AND LOTION DISPENSER.

Requires 1-1/4 inch to 1-1/2 inch Mounting Hole
3-1/2 inch Spout Reach
12.5 Ounce Bottle Capacity
Refillable from Above Sink Deck
Solid Brass Construction

TBD135

Group 1 - \$135
Group 2 - \$159
Group 3 - \$199
Group 4 - \$250

Trim By Design

**GARBAGE DISPOSAL STOPPER.**

Fits Model No. TBD140, TBD143, TBD144 and TBD145
Solid Brass Construction

TBD141

Group 1 - \$59
Group 2 - \$82
Group 3 - \$95
Group 4 - \$119

**GARBAGE DISPOSAL FLANGE.**

Fits Sinks with 3-1/2 inch Opening
Fits All In-Sink-Erator Models, Including Evolution Series
Solid Brass Construction

TBD140

Group 1 - \$99
Group 2 - \$111
Group 3 - \$132
Group 4 - \$165

**GARBAGE DISPOSAL FLANGE AND STOPPER KIT.**

Fits Sinks with 3-1/2 inch Opening
Fits All In-Sink-Erator Models, Including Evolution Series
Solid Brass Construction

TBD142

Group 1 - \$158
Group 2 - \$193
Group 3 - \$227
Group 4 - \$284

**GARBAGE DISPOSAL FLANGE AND STRAINER STOPPER KIT.**

Fits Sinks with 3-1/2 inch Opening
Fits All In-Sink-Erator Models, Including Evolution Series
Solid Brass Construction

TBD1422

Group 1 - \$158
Group 2 - \$193
Group 3 - \$227
Group 4 - \$284

**EXTENDED GARBAGE DISPOSAL FLANGE.**

Fits Sinks with 3-1/2 inch Opening
Fits All In-Sink-Erator Models, Including Evolution Series
For use with Stone, Fireclay and Farmhouse Sinks
Solid Brass Construction

TBD143

Group 1 - \$116
Group 2 - \$128
Group 3 - \$149
Group 4 - \$193

**EXTENDED GARBAGE DISPOSAL FLANGE AND STOPPER KIT.**

Fits Sinks with 3-1/2 inch Opening
Fits All In-Sink-Erator Models, Including Evolution Series
For use with Stone, Fireclay and Farmhouse Sinks
Solid Brass Construction

TBD1431

Group 1 - \$175
Group 2 - \$210
Group 3 - \$244
Group 4 - \$312

Trim By Design



EXTENDED GARBAGE DISPOSAL FLANGE AND STRAINER STOPPER KIT.

Fits Sinks with 3-1/2 inch Opening
Fits All In-Sink-Erator Models, Including Evolution Series
For use with Stone, Fireclay and Farmhouse Sinks
Solid Brass Construction

TBD1432

Group 1 - \$175
Group 2 - \$210
Group 3 - \$244
Group 4 - \$312



GARBAGE DISPOSAL FLANGE AND STOPPER KIT.

Fits Sinks with 3-1/2 inch Opening
3-Bolt Mount Sink Flange for Waste King
Solid Brass Construction

TBD145

Group 1 - \$124
Group 2 - \$166
Group 3 - \$200
Group 4 - \$250



GARBAGE DISPOSAL FLANGE AND STRAINER STOPPER KIT.

Fits Sinks with 3-1/2 inch Opening
3-Bolt Mount Sink Flange for Waste King
Solid Brass Construction

TBD1452

Group 1 - \$124
Group 2 - \$166
Group 3 - \$200
Group 4 - \$250



EXTENDED GARBAGE DISPOSAL FLANGE.

Fits Sinks with 3-1/2 inch Opening
3-Bolt Mount Sink Flange for Waste King
For use with Stone, Fireclay and Farmhouse Sinks
Solid Brass Construction

TBD144

Group 1 - \$99
Group 2 - \$117
Group 3 - \$139
Group 4 - \$174



EXTENDED GARBAGE DISPOSAL FLANGE AND STOPPER KIT.

Fits Sinks with 3-1/2 inch Opening
3-Bolt Mount Sink Flange for Waste King
For use with Stone, Fireclay and Farmhouse Sinks
Solid Brass Construction

TBD1441

Group 1 - \$148
Group 2 - \$184
Group 3 - \$219
Group 4 - \$275



EXTENDED GARBAGE DISPOSAL FLANGE AND STRAINER STOPPER KIT.

Fits Sinks with 3-1/2 inch Opening
3-Bolt Mount Sink Flange for Waste King
For use with Stone, Fireclay and Farmhouse Sinks
Solid Brass Construction

TBD1442

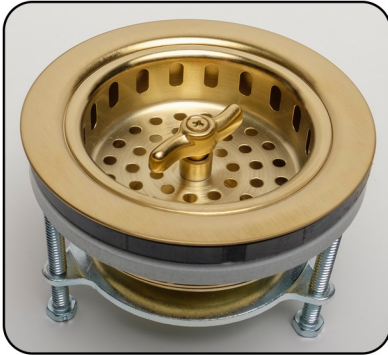
Group 1 - \$148
Group 2 - \$184
Group 3 - \$219
Group 4 - \$275

Trim By Design



**WING NUT LOCKING STYLE
KITCHEN STRAINER.**
Fits Sinks with 3-1/2 inch Opening
Brass Nuts
Solid Brass Construction

TBD155
Group 1 - \$179
Group 2 - \$199
Group 3 - \$225
Group 4 - \$281



**WING NUT LOCKING STYLE
KITCHEN STRAINER.**
Fits Sinks with 3-1/2 inch Opening
Sure Seal Mounting System
Solid Brass Construction

TBD155MK
Group 1 - \$204
Group 2 - \$224
Group 3 - \$250
Group 4 - \$306



POST STYLE KITCHEN STRAINER.
Fits Sinks with 3-1/2 inch Opening
Brass Nuts
Solid Brass Construction

TBD160
Group 1 - \$129
Group 2 - \$168
Group 3 - \$199
Group 4 - \$253



POST STYLE KITCHEN STRAINER.
Fits Sinks with 3-1/2 inch Opening
Sure Seal Mounting System
Solid Brass Construction

TBD160MK
Group 1 - \$154
Group 2 - \$193
Group 3 - \$224
Group 4 - \$278



POP-UP STYLE KITCHEN STRAINER.
Fits Sinks with 3-1/2 inch Opening
Touch Seal Stopper
Brass Cartridge Mechanism

TBD166
Group 1 - \$124
Group 2 - \$153
Group 3 - \$186
Group 4 - \$234

Trim By Design



POST STYLE KITCHEN STRAINER WITH SPRING LOADED CENTER POST.

Fits Sinks with 3-1/2 inch Opening
ABS Outer Body
Optional Part # TBD163EXTBOLT

TBD163

Group 1 - \$115
Group 2 - \$159
Group 3 - \$205
Group 4 - \$260



EXTENSION BOLT FOR TBD163 AND TBD172.

Extends Strainer Up To 2 inches (For Thick Sinks)

TBD163EXTBOLT

\$25



BAR / PREP SINK BASKET STRAINER.

Fits Sinks with 2 inch Opening
Drop-In Basket with Wire Handle to Lift and Replace
Brass Nuts
Solid Brass Construction

TBD170

Group 1 - \$74
Group 2 - \$116
Group 3 - \$135
Group 4 - \$169



JUNIOR DUO BASKET STRAINER.

Fits Sinks with 2 inch Opening
Removable Post Style Basket
Brass Nuts
Solid Brass Construction

TBD171

Group 1 - \$74
Group 2 - \$116
Group 3 - \$135
Group 4 - \$169



BAR / PREP SINK STRAINER.

Fits Sinks with 2 inch Opening
Features Spring Loaded Center Post for Positive Seal
ABS Outer Body
Allows Water to be Sealed in Sink
Optional Part # TBD163EXTBOLT

TBD172

Group 1 - \$72
Group 2 - \$115
Group 3 - \$140
Group 4 - \$175



**EASY TOUCH AIR ACTIVATED
GARBAGE DISPOSAL KIT.**

Requires 1-1/4 inch to 1-3/8 inch Mounting Hole
Brass Button and Flange Trim
Single Outlet Power Module
One (1) Switch Activated Outlet for Garbage Disposal
Includes 1/4 in. X 5 ft. Vinyl Flexible Air Tube
120 VAC U.L. Listed

TBD151 **Group 1 - \$158**
Group 2 - \$188
Group 3 - \$240
Group 4 - \$277



**EASY TOUCH AIR ACTIVATED
GARBAGE DISPOSAL KIT.**

Requires 1-1/4 inch to 1-3/8 inch Mounting Hole
Brass Button and Flange Trim
Dual Outlet Power Module
One (1) Switch Activated Outlet for Garbage Disposal
One (1) Unswitched Outlet for Hot Water Dispenser
Includes 1/4 in. X 5 ft. Vinyl Flexible Air Tube
120 VAC U.L. Listed

TBD152 **Group 1 - \$208**
Group 2 - \$238
Group 3 - \$290
Group 4 - \$327



**EASY TOUCH AIR ACTIVATED
GARBAGE DISPOSAL KIT.**

Requires 1-1/4 inch to 1-3/8 inch Mounting Hole
Brass Button and Flange Trim
Dual Outlet Power Module
One (1) Switch Activated Outlet for Garbage Disposal
One (1) Unswitched Outlet for Hot Water Dispenser
Includes 1/4 in. X 5 ft. Vinyl Flexible Air Tube
120 VAC U.L. Listed

TBD153 **Group 1 - \$299**
Group 2 - \$318
Group 3 - \$338
Group 4 - \$388



**EASY TOUCH AIR ACTIVATED
GARBAGE DISPOSAL KIT.**

Requires 1-1/4 inch to 1-3/8 inch Mounting Hole
Brass Raised Button and Flange Trim
Dual Outlet Power Module
One (1) Switch Activated Outlet for Garbage Disposal
One (1) Unswitched Outlet for Hot Water Dispenser
Includes 1/4 in. X 5 ft. Vinyl Flexible Air Tube
120 VAC U.L. Listed

TBD152R **Group 1 - \$299**
Group 2 - \$318
Group 3 - \$338
Group 4 - \$388



**EASY TOUCH AIR ACTIVATED
GARBAGE DISPOSAL KIT.**

Requires 1-1/4 inch to 1-3/8 inch Mounting Hole
Brass Button and Flange Trim
Dual Outlet Power Module
One (1) Switch Activated Outlet for Garbage Disposal
One (1) Unswitched Outlet for Hot Water Dispenser
Includes 1/4 in. X 5 ft. Vinyl Flexible Air Tube
120 VAC U.L. Listed

TBD154 **Group 1 - \$299**
Group 2 - \$318
Group 3 - \$338
Group 4 - \$388



**EASY TOUCH AIR ACTIVATED
GARBAGE DISPOSAL KIT.**

Requires 1-1/4 inch to 1-3/8 inch Mounting Hole
Brass Raised Button and Flange Trim
Dual Outlet Power Module
One (1) Switch Activated Outlet for Garbage Disposal
One (1) Unswitched Outlet for Hot Water Dispenser
Includes 1/4 in. X 5 ft. Vinyl Flexible Air Tube
120 VAC U.L. Listed

TBD154R **Group 1 - \$299**
Group 2 - \$318
Group 3 - \$338
Group 4 - \$388



**SINGLE OUTLET GARBAGE DISPOSAL
AIR SWITCH POWER MODULE.**

Works with Most Air Switch Buttons
Single Outlet Power Module
One (1) Switch Activated Outlet for Garbage Disposal
Includes 1/4 in. X 5 ft. Vinyl Flexible Air Tube
120 VAC U.L. Listed

TBD151LT \$89



**DUAL OUTLET GARBAGE DISPOSAL
AIR SWITCH POWER MODULE.**

Works with Most Air Switch Buttons
Dual Outlet Power Module
One (1) Switch Activated Outlet for Garbage Disposal
One (1) Unswitched Outlet for Hot Water Dispenser
Includes 1/4 in. X 5 ft. Vinyl Flexible Air Tube
120 VAC U.L. Listed

TBD152LT \$139

Trim By Design



EASY TOUCH AIR ACTIVATED REPLACEMENT SWITCH.

Requires 1-1/4 inch to 1-3/8 inch Mounting Hole
2 inch Transmitter Assembly
Brass Button and Flange Trim
Works with Most Air Switch Controllers

TBD1521 **Group 1 - \$69**
Group 2 - \$99
Group 3 - \$151
Group 4 - \$188



EASY TOUCH RAISED AIR ACTIVATED REPLACEMENT SWITCH.

Requires 1-1/4 inch to 1-3/8 inch Mounting Hole
2 inch Transmitter Assembly
Brass Raised Button and Flange Trim
Works with Most Air Switch Controllers

TBD1522 **Group 1 - \$162**
Group 2 - \$179
Group 3 - \$199
Group 4 - \$249



EASY TOUCH AIR ACTIVATED REPLACEMENT SWITCH.

Requires 1-1/4 inch to 1-3/8 inch Mounting Hole
2 inch Transmitter Assembly
Brass Button and Flange Trim
Works with Most Air Switch Controllers

TBD1531 **Group 1 - \$162**
Group 2 - \$179
Group 3 - \$199
Group 4 - \$249



EASY TOUCH AIR ACTIVATED REPLACEMENT SWITCH.

Requires 1-1/4 inch to 1-3/8 inch Mounting Hole
2 inch Transmitter Assembly
Brass Button and Flange Trim
Works with Most Air Switch Controllers

TBD1541 **Group 1 - \$162**
Group 2 - \$179
Group 3 - \$199
Group 4 - \$249



EASY TOUCH RAISED AIR ACTIVATED REPLACEMENT SWITCH.

Requires 1-1/4 inch to 1-3/8 inch Mounting Hole
2 inch Transmitter Assembly
Brass Raised Button and Flange Trim
Works with Most Air Switch Controllers

TBD1542 **Group 1 - \$162**
Group 2 - \$179
Group 3 - \$199
Group 4 - \$249

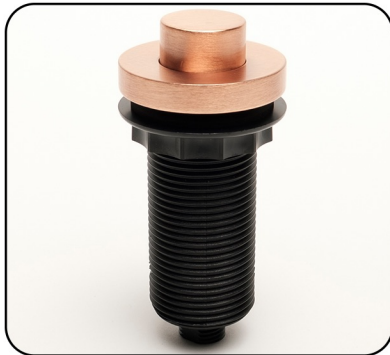
Trim By Design



EASY TOUCH AIR ACTIVATED REPLACEMENT SWITCH.

Requires 1-1/4 inch to 1-3/8 inch Mounting Hole
3 inch Transmitter Assembly
Brass Button and Flange Trim
Works with Most Air Switch Controllers

TBD1521L **Group 1 - \$79**
Group 2 - \$109
Group 3 - \$161
Group 4 - \$198



EASY TOUCH RAISED AIR ACTIVATED REPLACEMENT SWITCH.

Requires 1-1/4 inch to 1-3/8 inch Mounting Hole
3 inch Transmitter Assembly
Brass Raised Button and Flange Trim
Works with Most Air Switch Controllers

TBD1522L **Group 1 - \$172**
Group 2 - \$189
Group 3 - \$209
Group 4 - \$259



EASY TOUCH AIR ACTIVATED REPLACEMENT SWITCH.

Requires 1-1/4 inch to 1-3/8 inch Mounting Hole
3 inch Transmitter Assembly
Brass Button and Flange Trim
Works with Most Air Switch Controllers

TBD1531L **Group 1 - \$172**
Group 2 - \$189
Group 3 - \$209
Group 4 - \$259



EASY TOUCH AIR ACTIVATED REPLACEMENT SWITCH.

Requires 1-1/4 inch to 1-3/8 inch Mounting Hole
3 inch Transmitter Assembly
Brass Button and Flange Trim
Works with Most Air Switch Controllers

TBD1541L **Group 1 - \$172**
Group 2 - \$189
Group 3 - \$209
Group 4 - \$259



EASY TOUCH RAISED AIR ACTIVATED REPLACEMENT SWITCH.

Requires 1-1/4 inch to 1-3/8 inch Mounting Hole
3 inch Transmitter Assembly
Brass Raised Button and Flange Trim
Works with Most Air Switch Controllers

TBD1542L **Group 1 - \$172**
Group 2 - \$189
Group 3 - \$209
Group 4 - \$259

Trim By Design



1/2 INCH FLAT PATTERN SURE GRIP FLANGE.

7/8 in. I.D. X 2-5/8 in. O.D. X 5/16 in. HT.

Solid Brass Construction

TBD200

Group 1 - \$19

Group 2 - \$27

Group 3 - \$32

Group 4 - \$40



1/2 INCH SHOWER ARM FLANGE.

13/16 in. I.D. X 2-3/8 in. O.D. X 1/4 in. HT.

Held In Position By O-Ring

Solid Brass Construction

TBD2011

Group 1 - \$49

Group 2 - \$58

Group 3 - \$72

Group 4 - \$90



1/2 INCH SHOWER ARM FLANGE.

13/16 in. I.D. X 2-3/16 in. O.D. X 11/16 in. HT.

Held In Position By Set Screw

Solid Brass Construction

TBD202

Group 1 - \$49

Group 2 - \$58

Group 3 - \$72

Group 4 - \$90



1/2 INCH SHOWER ARM FLANGE.

13/16 in. I.D. X 2-3/16 in. O.D. X 3/8 in. HT.

Held In Position By O-Ring

Solid Brass Construction

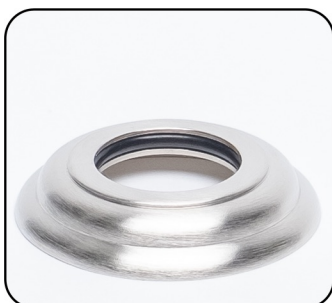
TBD203

Group 1 - \$49

Group 2 - \$58

Group 3 - \$72

Group 4 - \$90



3/4 INCH SHOWER ARM FLANGE.

1 in. I.D. X 2-3/16 in. O.D. X 3/8 in. HT.

Held in Position By O-Ring

Solid Brass Construction

TBD204

Group 1 - \$49

Group 2 - \$58

Group 3 - \$72

Group 4 - \$90



1/2 INCH SQUARE SHOWER ARM FLANGE.

13/16 in. I.D. X 2-1/16 in. O.D. X 9/32 in. HT.

Held In Position By O-Ring

Solid Brass Construction

TBD2020

Group 1 - \$65

Group 2 - \$69

Group 3 - \$72

Group 4 - \$90

Trim By Design

SHOWER ARMS



6 INCH SHOWER ARM EXTENDER.
1/2 in. Female Nut X 1/2 in. Male Nipple
Solid Brass Construction

TBD208

Group 1 - \$59
Group 2 - \$99
Group 3 - \$125



6 INCH SHOWER ARM.
1/2 inch Male Thread Connections
Solid Brass Construction

TBD210

Group 1 - \$47
Group 2 - \$75
Group 3 - \$89
Group 4 - \$114



6 INCH SHOWER ARM AND FLANGE.
1/2 inch Male Thread Connections
Solid Brass Construction

TBD2101

Group 1 - \$66
Group 2 - \$102
Group 3 - \$121
Group 4 - \$154



8 INCH SHOWER ARM.
1/2 inch Male Thread Connections
Solid Brass Construction

TBD211

Group 1 - \$53
Group 2 - \$95
Group 3 - \$112
Group 4 - \$140



8 INCH SHOWER ARM AND FLANGE.
1/2 inch Male Thread Connections
Solid Brass Construction

TBD2111

Group 1 - \$72
Group 2 - \$122
Group 3 - \$144
Group 4 - \$180

Trim By Design

**10 INCH SHOWER ARM.**

1/2 inch Male Thread Connections
Solid Brass Construction

TBD212

Group 1 - \$79
Group 2 - \$111
Group 3 - \$135
Group 4 - \$169

**10 INCH SHOWER ARM AND FLANGE.**

1/2 inch Male Thread Connections
Solid Brass Construction

TBD2121

Group 1 - \$98
Group 2 - \$138
Group 3 - \$167
Group 4 - \$209

**12 INCH SHOWER ARM.**

1/2 inch Male Thread Connections
Solid Brass Construction

TBD214

Group 1 - \$135
Group 2 - \$155
Group 3 - \$171
Group 4 - \$214

**12 INCH SHOWER ARM AND FLANGE.**

1/2 inch Male Thread Connections
Solid Brass Construction

TBD2141

Group 1 - \$154
Group 2 - \$182
Group 3 - \$203
Group 4 - \$254

**18 INCH SHOWER ARM
CEILING / WALL SUPPORT.**

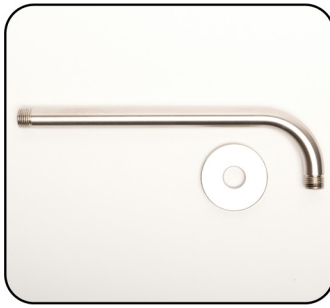
18 inch Rod Can be Cut to Length
Swivels for Easy Adjustment
Provides Added Stability
Solid Brass Construction

TBD219

Group 1 - \$155
Group 2 - \$263
Group 3 - \$299

Trim By Design

SHOWER ARMS



12 INCH RIGHT ANGLE SHOWER ARM AND FLANGE.

1/2 inch Male Thread Connections
2 inch Arm Drop
Solid Brass Construction

TBD216

Group 1 - \$138
Group 2 - \$176
Group 3 - \$221
Group 4 - \$276

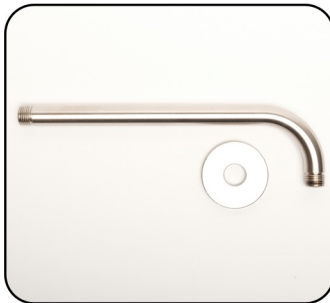


12 INCH RIGHT ANGLE SHOWER ARM.

1/2 inch Male Thread Connections
2 inch Arm Drop
Solid Brass Construction

TBD2161

Group 1 - \$119
Group 2 - \$149
Group 3 - \$189
Group 4 - \$236



18 INCH RIGHT ANGLE SHOWER ARM AND FLANGE.

1/2 inch Male Thread Connections
2 inch Arm Drop
Solid Brass Construction

TBD217

Group 1 - \$164
Group 2 - \$209
Group 3 - \$251
Group 4 - \$319



18 INCH RIGHT ANGLE SHOWER ARM.

1/2 inch Male Thread Connections
2 inch Arm Drop
Solid Brass Construction

TBD2171

Group 1 - \$145
Group 2 - \$182
Group 3 - \$219
Group 4 - \$279



24 INCH RIGHT ANGLE SHOWER ARM AND FLANGE.

1/2 inch Male Thread Connections
2 inch Arm Drop
Solid Brass Construction

TBD218

Group 1 - \$181
Group 2 - \$276
Group 3 - \$301
Group 4 - \$376



24 INCH RIGHT ANGLE SHOWER ARM.

1/2 inch Male Thread Connections
2 inch Arm Drop
Solid Brass Construction

TBD2181

Group 1 - \$162
Group 2 - \$249
Group 3 - \$269
Group 4 - \$336

Trim By Design



S-STYLE SHOWER ARM.

1/2 inch Male Thread Connections
Raises Showerhead 10 inches
Solid Brass Construction

TBD220

Group 1 - \$125
Group 2 - \$159
Group 3 - \$220
Group 4 - \$275



S-STYLE SHOWER ARM AND FLANGE.

1/2 inch Male Thread Connections
Raises Showerhead 10 inches
Solid Brass Construction

TBD2201

Group 1 - \$144
Group 2 - \$186
Group 3 - \$252
Group 4 - \$315



1/2 INCH I.P.S. X 12 INCH CEILING MOUNT SHOWER ARM AND FLANGE.

1/2 inch Male Thread Connections
Solid Brass Construction

TBD230

Group 1 - \$197
Group 2 - \$234
Group 3 - \$277
Group 4 - \$346



45 DEGREE SHOWER ELBOW.

1/2 in. Female Inlet X 1/2 in. Male Outlet
Solid Brass Construction

TBD232

Group 1 - \$49
Group 2 - \$85
Group 3 - \$99
Group 4 - \$123



SHOWER VOLUME CONTROL.

1/2 in. Female Inlet X 1/2 in. Male Outlet
Fits Between Shower Head and Shower Arm
Solid Brass Construction
Not a Positive Shut-Off

TBD233

Group 1 - \$49
Group 2 - \$85
Group 3 - \$99
Group 4 - \$123

Trim By Design

SHOWER HEADS



6 JET SHOWER HEAD.

Multi-Function Shower Head

2-3/4 inch Face

1/2 inch Female Inlet

1.75 GPM Complies with ASME A112.18.1

Solid Brass Construction

TBD235

Group 1 - \$239

Group 2 - \$299

Group 3 - \$389

Group 4 - \$486



8 JET SHOWER HEAD.

Multi-Function Shower Head

3-1/2 inch Face

1/2 inch Female Inlet

1.75 GPM Complies with ASME A112.18.1

Solid Brass Construction

TBD236

Group 1 - \$439

Group 2 - \$499

Group 3 - \$659

Group 4 - \$824

Trim By Design



**5 INCH TUB SPOUT AND
DECORATIVE TRIM RING.**
5 inch Overall Length
Threads onto a 1/2 inch I.P.S. Nipple
Front End Threaded Connection
Solid Brass Construction

TBD255 **Group 1 - \$153**
Group 2 - \$185
Group 3 - \$249
Group 4 - \$311



**7-1/4 INCH TUB SPOUT AND
DECORATIVE TRIM RING.**
7-1/4 inch Overall Length
Threads onto a 1/2 inch I.P.S. Nipple
Front End Threaded Connection
Premium Metal Construction

TBD256 **Group 1 - \$75**
Group 2 - \$135



**7-1/4 INCH TUB SPOUT AND
DECORATIVE TRIM RING.**
7-1/4 inch Overall Length
Slips onto a 1/2 inch Copper Pipe
Rear End Connection
Premium Metal Construction

TBD257 **Group 1 - \$93**
Group 2 - \$153



**5-1/2 INCH DIVERTER TUB SPOUT AND
DECORATIVE TRIM RING.**
5-1/2 inch Overall Length
Threads onto a 1/2 inch I.P.S. Nipple
Front End Threaded Connection
Solid Brass Construction

TBD260 **Group 1 - \$175**
Group 2 - \$199
Group 3 - \$326
Group 4 - \$408



**5-1/2 INCH DIVERTER TUB SPOUT AND
DECORATIVE TRIM RING.**
5-1/2 inch Overall Length
Threads onto a 1/2 inch I.P.S. Nipple
Front End Threaded Connection
Premium Metal Construction

TBD260Z **Group 1 - \$59**
Group 2 - \$119

Trim By Design



5-1/2 INCH DIVERTER TUB SPOUT AND DECORATIVE TRIM RING.

5-1/2 inch Overall Length
Slips onto a 1/2 inch Copper Pipe
Rear End Connection
Solid Brass Construction

TBD261

Group 1 - \$183
Group 2 - \$216
Group 3 - \$373
Group 4 - \$461



5-1/2 INCH DIVERTER TUB SPOUT AND DECORATIVE TRIM RING.

5-1/2 inch Overall Length
Slips onto a 1/2 inch Copper Pipe
Rear End Connection
Premium Metal Construction

TBD261Z

Group 1 - \$77
Group 2 - \$128



7-1/4 INCH DIVERTER TUB SPOUT AND DECORATIVE TRIM RING.

7-1/4 inch Overall Length
Threads onto a 1/2 inch I.P.S. Nipple
Front End Threaded Connection
Premium Metal Construction

TBD263

Group 1 - \$118
Group 2 - \$179



7-1/4 INCH DIVERTER TUB SPOUT AND DECORATIVE TRIM RING.

7-1/4 inch Overall Length
Slips onto a 1/2 inch Copper Pipe
Rear End Connection
Premium Metal Construction

TBD264

Group 1 - \$138
Group 2 - \$199

Trim By Design



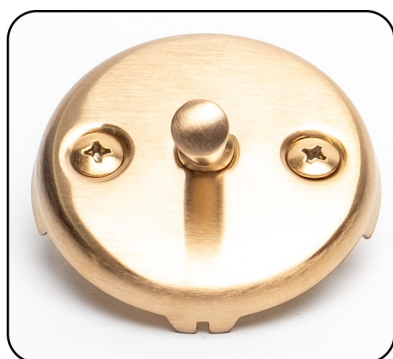
1-HOLE FACEPLATE AND SCREW.
3 inch Diameter
One (1) 1/4-20 X 2 inch Long Brass Screw
Solid Brass Construction

TBD300
Group 1 - \$59
Group 2 - \$70
Group 3 - \$81
Group 4 - \$101



2-HOLE FACEPLATE AND SCREWS.
3 inch Diameter
Two (2) 1/4-20 X 2 inch Long Brass Screws
Solid Brass Construction

TBD301
Group 1 - \$65
Group 2 - \$76
Group 3 - \$86
Group 4 - \$108



TRIP LEVER FACEPLATE AND SCREWS.
For Trip Lever Bathtub Drains
3 inch Diameter
Two (2) 1/4-20 X 2 inch Long Brass Screws
Solid Brass Construction

TBD302
Group 1 - \$79
Group 2 - \$89
Group 3 - \$119
Group 4 - \$149



DAISY STYLE FACEPLATE AND SCREW.
3 inch Diameter
One (1) 1/4-20 X 2 inch Long Brass Screw
Solid Brass Construction

TBD303
Group 1 - \$59
Group 2 - \$70
Group 3 - \$81
Group 4 - \$101



DOME STRAINER COVER AND SCREW.
2-7/8 inch Diameter Cover
For Trip Lever Bath Drains
Solid Brass Construction

TBD305
Group 1 - \$39
Group 2 - \$49
Group 3 - \$69
Group 4 - \$86

Trim By Design

BATHTUB TRIM



1-1/2 INCH COARSE THREAD DOME STRAINER BATHTUB DRAIN PLUG.

1-1/2 inch Coarse Thread Bathtub Drain Plug
2-7/8 inch Diameter Cover
For Trip Lever Bath Drains
Solid Brass Construction

TBD306

Group 1 - \$68
Group 2 - \$78
Group 3 - \$98
Group 4 - \$115



1-1/2 INCH COARSE THREAD LIFT & TURN BATHTUB DRAIN PLUG.

1-1/2 inch Coarse Thread Lift & Turn Bathtub Drain Plug
Solid Brass Construction

TBD307

Group 1 - \$86
Group 2 - \$95
Group 3 - \$113
Group 4 - \$141



1-1/2 INCH COARSE THREAD TOE OPERATED BATHTUB DRAIN PLUG.

1-1/2 inch Coarse Thread Toe Operated Bathtub Drain Plug
Solid Brass Stopper (Cap)
Solid Brass Construction

TBD308

Group 1 - \$92
Group 2 - \$104
Group 3 - \$129
Group 4 - \$161



1-1/4 INCH FINE THREAD TOE OPERATED BATHTUB DRAIN PLUG.

1-1/4 inch Fine Thread Toe Operated Bathtub Drain Plug
Solid Brass Flush Stopper
Includes: 1-1/2 in. Coarse Thread X
1-1/4 in. Fine Thread Brass Bushing
Fits 1-1/4 in and 1-1/2 in Drain Opening
Solid Brass Construction

TBD3008

Group 1 - \$92
Group 2 - \$104
Group 3 - \$129
Group 4 - \$161



1-1/4 INCH FINE THREAD TOE OPERATED BATHTUB DRAIN PLUG.

1-1/4 inch Fine Thread Toe Operated Bathtub Drain Plug
3 inch Brass Dome Stopper
Includes: 1-1/2 in. Coarse Thread X
1-1/4 in. Fine Thread Brass Bushing
Fits 1-1/4 in and 1-1/2 in Drain Opening
Solid Brass Construction

TBD3088

Group 1 - \$102
Group 2 - \$115
Group 3 - \$139
Group 4 - \$174

Trim By Design



**1-1/2 INCH COARSE THREAD TOE OPERATED
INTEGRATED OVERFLOW BATHTUB DRAIN PLUG.**
1-1/2 inch Coarse Thread Toe Operated Bathtub Drain
Plug
2-3/4 inch Brass Dome Stopper
2-1/2 inch Length
For Tubs with Integrated Overflow Channels
Solid Brass Construction

TBD3888
Group 1 - \$130
Group 2 - \$145
Group 3 - \$179
Group 4 - \$240



**1-1/2 INCH COARSE THREAD TOE OPERATED
EXTENDED BATHTUB DRAIN PLUG.**
1-1/2 inch Coarse Thread Toe Operated Bathtub Drain
Plug
2-3/4 inch Brass Dome Stopper
2-1/2 inch Length
For Thick Tubs without Overflow Channels
Solid Brass Construction

TBD3889
Group 1 - \$130
Group 2 - \$145
Group 3 - \$179
Group 4 - \$240



KOHLER TYPE BRASS BUSHING.
2 in. Fine O.D. Thread X 1-1/2 in. Coarse I.D. Thread
Fits Older Kohler Bathtub Drain Shoe (Elbow)
Converts 2 in. into 1-1/2 in. Bathtub Drain Shoe
Solid Brass Construction

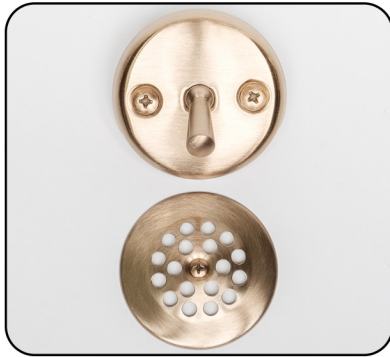
TBD3001BBK \$25



BRASS HALF FERRULE.
1-1/2" O.D. For 17 Gauge Brass Waste and Overflow
Tubing
For Brass Waste and Overflow Solder Installations
Solid Brass Construction

TBD3000BHF \$6

Trim By Design



DOMESTRAINER COVER AND TRIP LEVER FACEPLATE KIT.

Trip Lever Brass Overflow Faceplate and Screws
2-7/8 in. Brass Dome Strainer Cover and Screw
Solid Brass Construction

TBD3052

Group 1 - \$118
Group 2 - \$138
Group 3 - \$188
Group 4 - \$235



1-1/4 INCH FINE THREAD DOMESTRAINER BATHTUB PLUG AND TRIP LEVER FACEPLATE KIT.

Trip Lever Brass Overflow Faceplate and Screws
2-7/8 in. Brass Dome Strainer Cover and Screw
1-1/4 in. Fine Thread Brass Dome Strainer Bathtub Drain Plug
Includes: 1-1/2 in. Coarse Thread X
1-1/4 in. Fine Thread Brass
Fits 1-1/4 in and 1-1/2 in Drain Opening
Solid Brass Construction

TBD3052C

Group 1 - \$147
Group 2 - \$167
Group 3 - \$217
Group 4 - \$264



1-1/2 INCH COARSE THREAD LIFT & TURN BATHTUB DRAIN PLUG AND 1-HOLE FACEPLATE KIT.

1-Hole Brass Overflow Faceplate and Screw
1-1/2 in. Coarse Thread Lift & Turn Brass Bathtub Drain Plug
Solid Brass Construction

TBD3070

Group 1 - \$145
Group 2 - \$165
Group 3 - \$194
Group 4 - \$242



1-1/4 INCH FINE THREAD LIFT & TURN BATHTUB DRAIN PLUG AND 1-HOLE FACEPLATE KIT.

1-Hole Brass Overflow Faceplate and Screw
2-Hole to 1-Hole Converter Bracket
1-1/4 in. Fine Thread Lift & Turn Brass Bathtub Drain Plug
Includes: 1-1/2 in. Coarse Thread X
1-1/4 in. Fine Thread Brass Bushing
Fits 1-1/4 in and 1-1/2 in Drain Opening
Solid Brass Construction

TBD3070C

Group 1 - \$163
Group 2 - \$183
Group 3 - \$212
Group 4 - \$260



1-1/2 INCH COARSE THREAD LIFT & TURN BATHTUB DRAIN PLUG AND 2-HOLE FACEPLATE KIT.

2-Hole Brass Overflow Faceplate and Screws
1-1/2 in. Coarse Thread Lift & Turn Brass Bathtub Drain Plug
Solid Brass Construction

TBD3071

Group 1 - \$151
Group 2 - \$171
Group 3 - \$199
Group 4 - \$249

Trim By Design



**1-1/4 INCH FINE THREAD LIFT & TURN
BATHTUB DRAIN PLUG AND 2-HOLE FACEPLATE KIT.**
2-Hole Brass Overflow Faceplate and Screws
1-1/4 in. Fine Thread Lift & Turn Brass Bathtub Drain Plug
Includes: 1-1/2 in. Coarse Thread X
1-1/4 in. Fine Thread Brass Bushing
Fits 1-1/4 in and 1-1/2 in Drain Opening
Solid Brass Construction

TBD3071C
Group 1 - \$166
Group 2 - \$186
Group 3 - \$214
Group 4 - \$264



**1-1/2 INCH COARSE THREAD TOE OPERATED
BATHTUB DRAIN PLUG AND 1-HOLE FACEPLATE KIT.**
1-Hole Brass Overflow Faceplate and Screw
1-1/2 in. Coarse Thread Toe Operated Brass Bathtub Drain Plug
Solid Brass Construction

TBD3080
Group 1 - \$151
Group 2 - \$174
Group 3 - \$210
Group 4 - \$262



**1-1/4 INCH FINE THREAD TOE OPERATED
BATHTUB DRAIN PLUG AND 1-HOLE FACEPLATE KIT.**
1-Hole Brass Overflow Faceplate and Screw
2-Hole to 1-Hole Converter Bracket
1-1/4 in. Fine Thread Toe Operated Brass Bathtub Drain Plug
Includes: 1-1/2 in. Coarse Thread X
1-1/4 in. Fine Thread Brass Bushing
Fits 1-1/4 in and 1-1/2 in Drain Opening
Solid Brass Construction

TBD3080C
Group 1 - \$169
Group 2 - \$195
Group 3 - \$228
Group 4 - \$280



**1-1/2 INCH COARSE THREAD TOE OPERATED
BATHTUB DRAIN PLUG AND 2-HOLE FACEPLATE KIT.**
2-Hole Brass Overflow Faceplate and Screws
1-1/2 in. Coarse Thread Toe Operated Brass Bathtub Drain Plug
Solid Brass Construction

TBD3081
Group 1 - \$157
Group 2 - \$180
Group 3 - \$215
Group 4 - \$269



**1-1/4 INCH FINE THREAD TOE OPERATED
BATHTUB DRAIN PLUG AND 2-HOLE FACEPLATE KIT.**
2-Hole Brass Overflow Faceplate and Screws
1-1/4 in. Fine Thread Toe Operated Brass Bathtub Drain Plug
Includes: 1-1/2 in. Coarse Thread X
1-1/4 in. Fine Thread Brass Bushing
Fits 1-1/4 in and 1-1/2 in Drain Opening
Solid Brass Construction

TBD3081C
Group 1 - \$172
Group 2 - \$195
Group 3 - \$240
Group 4 - \$284

Trim By Design



1-1/4 INCH FINE THREAD TOE OPERATED BATHTUB DRAIN PLUG AND 1-HOLE FACEPLATE KIT.

TBD3083C

Group 1 - \$161
Group 2 - \$185
Group 3 - \$220
Group 4 - \$275

1-Hole Brass Overflow Faceplate and Screw
2-Hole to 1-Hole Converter Bracket
1-1/4 in. Fine Thread Toe Operated Brass Bathtub Drain Plug
3 inch Toe Operated Dome Stopper
Includes: 1-1/2 in. Coarse Thread X
1-1/4 in. Fine Thread Brass Bushing
Fits 1-1/4 in and 1-1/2 in Drain Opening
Solid Brass Construction



1-1/4 INCH FINE THREAD FLUSH TOE OPERATED BATHTUB DRAIN PLUG AND 1-HOLE FACEPLATE KIT.

TBD3085C

Group 1 - \$151
Group 2 - \$174
Group 3 - \$210
Group 4 - \$262

1-Hole Brass Overflow Faceplate and Screw
2-Hole to 1-Hole Converter Bracket
1-1/4 in. Fine Thread Toe Operated Brass Bathtub Drain Plug
Flush Toe Operated Stopper
Includes: 1-1/2 in. Coarse Thread X
1-1/4 in. Fine Thread Brass Bushing
Fits 1-1/4 in and 1-1/2 in Drain Opening
Solid Brass Construction



1-1/4 INCH FINE THREAD TOE OPERATED BATHTUB DRAIN PLUG AND 2-HOLE FACEPLATE KIT.

TBD3086C

Group 1 - \$167
Group 2 - \$191
Group 3 - \$225
Group 4 - \$282

2-Hole Brass Overflow Faceplate and Screws
1-1/4 in. Fine Thread Toe Operated Brass Bathtub Drain Plug
3 inch Toe Operated Dome Stopper
Includes: 1-1/2 in. Coarse Thread X
1-1/4 in. Fine Thread Brass Bushing
Fits 1-1/4 in and 1-1/2 in Drain Opening
Solid Brass Construction



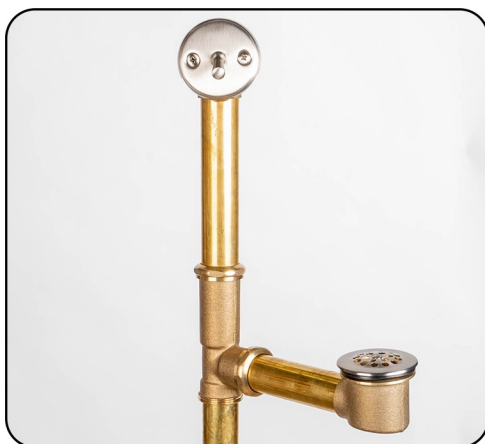
1-1/4 INCH FINE THREAD FLUSH TOE OPERATED BATHTUB DRAIN PLUG AND 2-HOLE FACEPLATE KIT.

TBD3087C

Group 1 - \$157
Group 2 - \$180
Group 3 - \$215
Group 4 - \$269

2-Hole Brass Overflow Faceplate and Screws
1-1/4 in. Fine Thread Toe Operated Brass Bathtub Drain Plug
Flush Toe Operated Stopper
Includes: 1-1/2 in. Coarse Thread X
1-1/4 in. Fine Thread Brass Bushing
Fits 1-1/4 in and 1-1/2 in Drain Opening
Solid Brass Construction

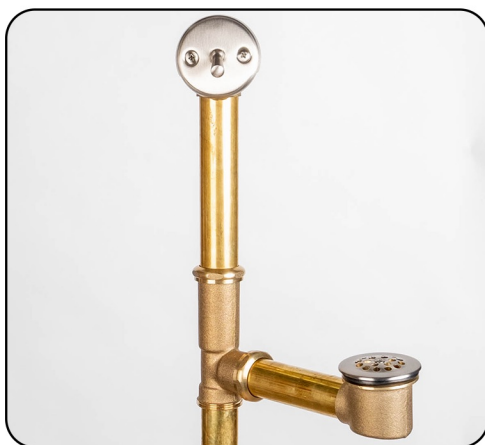
Trim By Design



TRIP LEVER WASTE AND OVERFLOW WITH DOME STRAINER.

Trip Lever Brass Overflow Faceplate
Dome Strainer Brass Bathtub Drain Plug
10 inch - 14 inch Maximum Vertical Adjustment
7 inch Maximum Horizontal Adjustment
17-Gauge Solid Brass Construction
Solid Brass Trim

TBD315 **Group 1 - \$375**
Group 2 - \$410
Group 3 - \$499
Group 4 - \$624



TRIP LEVER WASTE AND OVERFLOW WITH DOME STRAINER.

Trip Lever Brass Overflow Faceplate
Dome Strainer Brass Bathtub Drain Plug
16 inch - 22 inch Maximum Vertical Adjustment
10 inch Maximum Horizontal Adjustment
17-Gauge Solid Brass Construction
Solid Brass Trim

TBD317 **Group 1 - \$425**
Group 2 - \$449
Group 3 - \$525
Group 4 - \$655



LIFT & TURN STYLE WASTE AND OVERFLOW WITH 2-HOLE FACEPLATE.

2-Hole Brass Overflow Faceplate
Lift & Turn Brass Bathtub Drain Plug
22 inch Maximum Vertical Adjustment
10 inch Maximum Horizontal Adjustment
17-Gauge Solid Brass Construction
Tube (Pipe) May be Cut to Size at Installation
Solid Brass Trim

TBD322 **Group 1 - \$499**
Group 2 - \$525
Group 3 - \$565
Group 4 - \$699



LIFT & TURN STYLE WASTE AND OVERFLOW WITH 1-HOLE FACEPLATE.

1-Hole Brass Overflow Faceplate
Lift & Turn Brass Bathtub Drain Plug
22 inch Maximum Vertical Adjustment
10 inch Maximum Horizontal Adjustment
17-Gauge Solid Brass Construction
Tube (Pipe) May be Cut to Size at Installation
Solid Brass Trim

TBD3221 **Group 1 - \$499**
Group 2 - \$525
Group 3 - \$565
Group 4 - \$699

Trim By Design

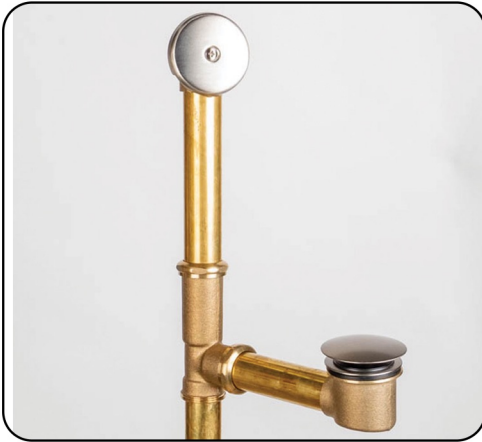


TOE OPERATED WASTE AND OVERFLOW WITH 2-HOLE FACEPLATE.

2-Hole Brass Overflow Faceplate
Toe Operated Brass Bathtub Drain Plug
3 inch Brass Dome Stopper
22 inch Maximum Vertical Adjustment
10 inch Maximum Horizontal Adjustment
17-Gauge Solid Brass Construction
Tube (Pipe) May be Cut to Size at Installation
Solid Brass Trim

TBD326

Group 1 - \$533
Group 2 - \$557
Group 3 - \$650
Group 4 - \$799



TOE OPERATED WASTE AND OVERFLOW WITH 1-HOLE FACEPLATE.

1-Hole Brass Overflow Faceplate
Toe Operated Brass Bathtub Drain Plug
3 inch Brass Dome Stopper
22 inch Maximum Vertical Adjustment
10 inch Maximum Horizontal Adjustment
17-Gauge Solid Brass Construction
Tube (Pipe) May be Cut to Size at Installation
Solid Brass Trim

TBD3261

Group 1 - \$533
Group 2 - \$557
Group 3 - \$650
Group 4 - \$799



TRIP LEVER WASTE AND OVERFLOW WITH DOME STRAINER.

Trip Lever Brass Overflow Faceplate
Dome Strainer Brass Bathtub Drain Plug
10 inch - 14 inch Maximum Vertical Adjustment
7 inch Maximum Horizontal Adjustment
17-Gauge Solid Brass Construction
Solid Brass Trim

TBD316

Group 1 - \$710
Group 2 - \$724
Group 3 - \$783
Group 4 - \$979

**COMPLETELY PLATED FOR ABOVE-THE-FLOOR AND
FREESTANDING BATHTUB INSTALLATIONS**



TRIP LEVER WASTE AND OVERFLOW WITH DOME STRAINER.

Trip Lever Brass Overflow Faceplate
Dome Strainer Brass Bathtub Drain Plug
16 inch - 22 inch Maximum Vertical Adjustment
10 inch Maximum Horizontal Adjustment
17-Gauge Solid Brass Construction
Solid Brass Trim

TBD318

Group 1 - \$750
Group 2 - \$764
Group 3 - \$823
Group 4 - \$1018

**COMPLETELY PLATED FOR ABOVE-THE-FLOOR AND
FREESTANDING BATHTUB INSTALLATIONS**



LIFT & TURN STYLE WASTE AND OVERFLOW WITH 2-HOLE FACEPLATE.

2-Hole Brass Overflow Faceplate
Lift & Turn Brass Bathtub Drain Plug
22 inch Maximum Vertical Adjustment
10 inch Maximum Horizontal Adjustment
17-Gauge Solid Brass Construction
Tube (Pipe) May be Cut to Size at Installation
Solid Brass Trim

COMPLETELY PLATED FOR ABOVE-THE-FLOOR AND FREESTANDING BATHTUB INSTALLATIONS

TBD323
Group 1 - \$781
Group 2 - \$799
Group 3 - \$931
Group 4 - \$1163



LIFT & TURN STYLE WASTE AND OVERFLOW WITH 1-HOLE FACEPLATE.

1-Hole Brass Overflow Faceplate
Lift & Turn Brass Bathtub Drain Plug
22 inch Maximum Vertical Adjustment
10 inch Maximum Horizontal Adjustment
17-Gauge Solid Brass Construction
Tube (Pipe) May be Cut to Size at Installation
Solid Brass Trim

COMPLETELY PLATED FOR ABOVE-THE-FLOOR AND FREESTANDING BATHTUB INSTALLATIONS

TBD3231
Group 1 - \$781
Group 2 - \$799
Group 3 - \$931
Group 4 - \$1163



LIFT & TURN STYLE WASTE AND OVERFLOW WITH VINTAGE STYLE FACEPLATE.

Vintage (Daisy) Style Brass Overflow Faceplate
Lift & Turn Brass Bathtub Drain Plug
22 inch Maximum Vertical Adjustment
10 inch Maximum Horizontal Adjustment
17-Gauge Solid Brass Construction
Tube (Pipe) May be Cut to Size at Installation
Solid Brass Trim

COMPLETELY PLATED FOR ABOVE-THE-FLOOR AND FREESTANDING BATHTUB INSTALLATIONS

TBD325
Group 1 - \$781
Group 2 - \$799
Group 3 - \$931
Group 4 - \$1163



TOE OPERATED WASTE AND OVERFLOW WITH 1-HOLE FACEPLATE.

1-Hole Brass Overflow Faceplate
Toe Operated Brass Bathtub Drain Plug
3 inch Brass Dome Stopper
22 inch Maximum Vertical Adjustment
10 inch Maximum Horizontal Adjustment
17-Gauge Solid Brass Construction
Tube (Pipe) May be Cut to Size at Installation
Solid Brass Trim

COMPLETELY PLATED FOR ABOVE-THE-FLOOR AND FREESTANDING BATHTUB INSTALLATIONS

TBD3271
Group 1 - \$791
Group 2 - \$815
Group 3 - \$952
Group 4 - \$1190

Trim By Design



TOE OPERATED WASTE AND OVERFLOW WITH VINTAGE STYLE FACEPLATE.

TBD328

Group 1 - \$791
Group 2 - \$815
Group 3 - \$952
Group 4 - \$1190

Vintage (Daisy) Style Brass Overflow Faceplate
Toe Operated Brass Bathtub Drain Plug
3 inch Brass Dome Stopper
22 inch Maximum Vertical Adjustment
10 inch Maximum Horizontal Adjustment
17-Gauge Solid Brass Construction
Tube (Pipe) May be Cut to Size at Installation
Solid Brass Trim

**COMPLETELY PLATED FOR ABOVE-THE-FLOOR AND
FREESTANDING BATHTUB INSTALLATIONS**



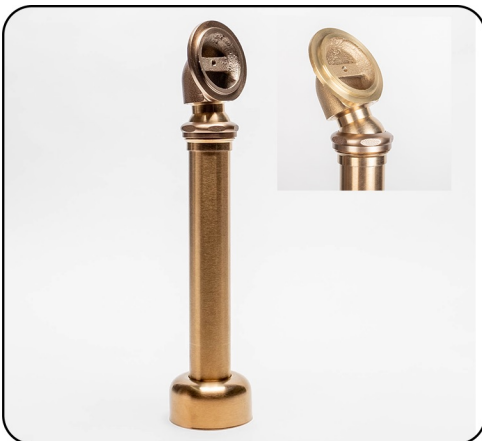
PIVOTING TOE OPERATED WASTE AND OVERFLOW WITH 1-HOLE FACEPLATE.

TBD3141

Group 1 - \$811
Group 2 - \$835
Group 3 - \$1129
Group 4 - \$1490

Pivoting Head (Adjustable)
1-Hole Brass Overflow Faceplate
Toe Operated Brass Bathtub Drain Plug
3 inch Brass Dome Stopper
24 inch Maximum Vertical Adjustment
24 inch Maximum Horizontal Adjustment
17-Gauge Solid Brass Construction
Tube (Pipe) May be Cut to Size at Installation
Solid Brass Trim

**COMPLETELY PLATED FOR ABOVE-THE-FLOOR AND
FREESTANDING BATHTUB INSTALLATIONS**



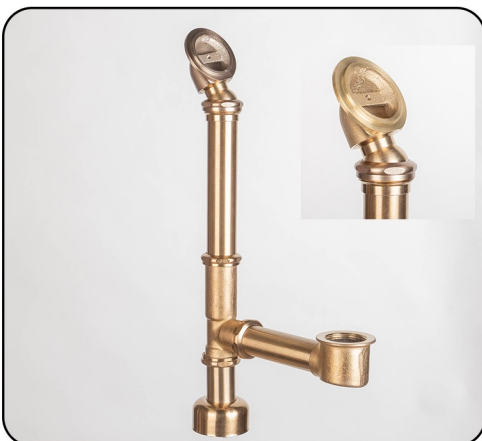
PIVOTING SUB-FLOOR BATHTUB WASTE AND OVERFLOW LESS TRIM.

TBD327

Group 1 - \$448
Group 2 - \$520
Group 3 - \$599
Group 4 - \$749

Pivoting Head (Adjustable)
24 inch Maximum Vertical Adjustment
Compatible with TBD300 or TBD303 Overflow Faceplates
17-Gauge Solid Brass Construction
Tube (Pipe) May be Cut to Size at Installation

**COMPLETELY PLATED FOR ABOVE-THE-FLOOR AND
FREESTANDING BATHTUB INSTALLATIONS**



PIVOTING 1-HOLE WASTE AND OVERFLOW LESS TRIM.

TBD3251LT

Group 1 - \$739
Group 2 - \$815
Group 3 - \$972
Group 4 - \$1215

Pivoting Head (Adjustable)
24 inch Maximum Vertical Adjustment
24 inch Maximum Horizontal Adjustment
Compatible with any TBD 1-Hole Bathtub Trim Kit
17-Gauge Solid Brass Construction
Tube (Pipe) May be Cut to Size at Installation

**COMPLETELY PLATED FOR ABOVE-THE-FLOOR AND
FREESTANDING BATHTUB INSTALLATIONS**

Trim By Design



TOE OPERATED WASTE AND OVERFLOW WITH 2-HOLE FACEPLATE.

2-Hole Brass Overflow Faceplate
 Toe Operated Brass Bathtub Drain Plug
 14 inch Maximum Vertical Adjustment
 8 inch Maximum Horizontal Adjustment
 1-1/2 inch Schedule 40 ABS Plastic Body
 Tube (Pipe) May be Extended (Replaced) for Custom Installation
 Tube (Pipe) May be Cut to Size at Installation
 Solid Brass Trim

TBD330A **Group 1 - \$226**
Group 2 - \$249
Group 3 - \$284
Group 4 - \$338



TOE OPERATED WASTE AND OVERFLOW WITH 1-HOLE FACEPLATE.

1-Hole Brass Overflow Faceplate
 Toe Operated Brass Bathtub Drain Plug
 14 inch Maximum Vertical Adjustment
 8 inch Maximum Horizontal Adjustment
 1-1/2 inch Schedule 40 ABS Plastic Body
 Tube (Pipe) May be Extended (Replaced) for Custom Installation
 Tube (Pipe) May be Cut to Size at Installation
 Solid Brass Trim

TBD3301A **Group 1 - \$220**
Group 2 - \$243
Group 3 - \$279
Group 4 - \$331



TOE OPERATED WASTE AND OVERFLOW WITH 2-HOLE FACEPLATE.

2-Hole Brass Overflow Faceplate
 Toe Operated Brass Bathtub Drain Plug
 14 inch Maximum Vertical Adjustment
 8 inch Maximum Horizontal Adjustment
 1-1/2 inch Schedule 40 PVC Plastic Body
 Tube (Pipe) May be Extended (Replaced) for Custom Installation
 Tube (Pipe) May be Cut to Size at Installation
 Solid Brass Trim

TBD330P **Group 1 - \$256**
Group 2 - \$279
Group 3 - \$314
Group 4 - \$368



TOE OPERATED WASTE AND OVERFLOW WITH 1-HOLE FACEPLATE.

1-Hole Brass Overflow Faceplate
 Toe Operated Brass Bathtub Drain Plug
 14 inch Maximum Vertical Adjustment
 8 inch Maximum Horizontal Adjustment
 1-1/2 inch Schedule 40 PVC Plastic Body
 Tube (Pipe) May be Extended (Replaced) for Custom Installation
 Tube (Pipe) May be Cut to Size at Installation
 Solid Brass Trim

TBD3301P **Group 1 - \$250**
Group 2 - \$272
Group 3 - \$309
Group 4 - \$361

Trim By Design



LIFT & TURN WASTE AND OVERFLOW WITH 2-HOLE FACEPLATE.

2-Hole Brass Overflow Faceplate
Lift & Turn Brass Bathtub Drain Plug
14 inch Maximum Vertical Adjustment
8 inch Maximum Horizontal Adjustment
1-1/2 inch Schedule 40 ABS Plastic Body
Tube (Pipe) May be Extended (Replaced) for
Custom Installation
Tube (Pipe) May be Cut to Size at Installation
Solid Brass Trim

TBD331A **Group 1 - \$220**
Group 2 - \$240
Group 3 - \$268
Group 4 - \$318



LIFT & TURN WASTE AND OVERFLOW WITH 1-HOLE FACEPLATE.

1-Hole Brass Overflow Faceplate
Lift & Turn Brass Bathtub Drain Plug
14 inch Maximum Vertical Adjustment
8 inch Maximum Horizontal Adjustment
1-1/2 inch Schedule 40 ABS Plastic Body
Tube (Pipe) May be Extended (Replaced) for
Custom Installation
Tube (Pipe) May be Cut to Size at Installation
Solid Brass Trim

TBD3311A **Group 1 - \$214**
Group 2 - \$234
Group 3 - \$263
Group 4 - \$311



LIFT & TURN WASTE AND OVERFLOW WITH 2-HOLE FACEPLATE.

2-Hole Brass Overflow Faceplate
Lift & Turn Brass Bathtub Drain Plug
14 inch Maximum Vertical Adjustment
8 inch Maximum Horizontal Adjustment
1-1/2 inch Schedule 40 PVC Plastic Body
Tube (Pipe) May be Extended (Replaced) for
Custom Installation
Tube (Pipe) May be Cut to Size at Installation
Solid Brass Trim

TBD331P **Group 1 - \$250**
Group 2 - \$270
Group 3 - \$298
Group 4 - \$348



LIFT & TURN WASTE AND OVERFLOW WITH 1-HOLE FACEPLATE.

1-Hole Brass Overflow Faceplate
Lift & Turn Brass Bathtub Drain Plug
14 inch Maximum Vertical Adjustment
8 inch Maximum Horizontal Adjustment
1-1/2 inch Schedule 40 PVC Plastic Body
Tube (Pipe) May be Extended (Replaced) for
Custom Installation
Tube (Pipe) May be Cut to Size at Installation
Solid Brass Trim

TBD3311P **Group 1 - \$244**
Group 2 - \$264
Group 3 - \$293
Group 4 - \$341

Trim By Design



TOE OPERATED WASTE AND OVERFLOW WITH 2-HOLE FACEPLATE.

2-Hole Brass Overflow Faceplate
Flush Stopper Toe Operated Brass Bathtub Drain Plug
14 inch Maximum Vertical Adjustment
8 inch Maximum Horizontal Adjustment
1-1/2 inch Schedule 40 ABS Plastic Body
Tube (Pipe) May be Extended (Replaced) for
Custom Installation
Tube (Pipe) May be Cut to Size at Installation
Solid Brass Trim

TBD332A **Group 1 - \$226**
Group 2 - \$249
Group 3 - \$284
Group 4 - \$338



TOE OPERATED WASTE AND OVERFLOW WITH 1-HOLE FACEPLATE.

1-Hole Brass Overflow Faceplate
Flush Stopper Toe Operated Brass Bathtub Drain Plug
14 inch Maximum Vertical Adjustment
8 inch Maximum Horizontal Adjustment
1-1/2 inch Schedule 40 ABS Plastic Body
Tube (Pipe) May be Extended (Replaced) for
Custom Installation
Tube (Pipe) May be Cut to Size at Installation
Solid Brass Trim

TBD3321A **Group 1 - \$217**
Group 2 - \$240
Group 3 - \$276
Group 4 - \$328



TOE OPERATED WASTE AND OVERFLOW WITH 2-HOLE FACEPLATE.

2-Hole Brass Overflow Faceplate
Flush Stopper Toe Operated Brass Bathtub Drain Plug
14 inch Maximum Vertical Adjustment
8 inch Maximum Horizontal Adjustment
1-1/2 inch Schedule 40 PVC Plastic Body
Tube (Pipe) May be Extended (Replaced) for
Custom Installation
Tube (Pipe) May be Cut to Size at Installation
Solid Brass Trim

TBD332P **Group 1 - \$256**
Group 2 - \$279
Group 3 - \$314
Group 4 - \$368



TOE OPERATED WASTE AND OVERFLOW WITH 1-HOLE FACEPLATE.

1-Hole Brass Overflow Faceplate
Flush Stopper Toe Operated Brass Bathtub Drain Plug
14 inch Maximum Vertical Adjustment
8 inch Maximum Horizontal Adjustment
1-1/2 inch Schedule 40 PVC Plastic Body
Tube (Pipe) May be Extended (Replaced) for
Custom Installation
Tube (Pipe) May be Cut to Size at Installation
Solid Brass Trim

TBD3321P **Group 1 - \$247**
Group 2 - \$270
Group 3 - \$306
Group 4 - \$259

Trim By Design



TOE OPERATED WASTE AND OVERFLOW WITH 2-HOLE FACEPLATE.

2-Hole Brass Overflow Faceplate
 Toe Operated Brass Bathtub Drain Plug
 3 inch Brass Dome Stopper
 14 inch Maximum Vertical Adjustment
 8 inch Maximum Horizontal Adjustment
 1-1/2 inch Schedule 40 ABS Plastic Body
 Tube (Pipe) May be Extended (Replaced) for Custom Installation
 Tube (Pipe) May be Cut to Size at Installation
 Solid Brass Trim

TBD333A **Group 1** - \$236
 Group 2 - \$260
 Group 3 - \$294
 Group 4 - \$351



TOE OPERATED WASTE AND OVERFLOW WITH 1-HOLE FACEPLATE.

1-Hole Brass Overflow Faceplate
 Toe Operated Brass Bathtub Drain Plug
 3 inch Brass Dome Stopper
 14 inch Maximum Vertical Adjustment
 8 inch Maximum Horizontal Adjustment
 1-1/2 inch Schedule 40 ABS Plastic Body
 Tube (Pipe) May be Extended (Replaced) for Custom Installation
 Tube (Pipe) May be Cut to Size at Installation
 Solid Brass Trim

TBD3331A **Group 1** - \$227
 Group 2 - \$251
 Group 3 - \$286
 Group 4 - \$341



TOE OPERATED WASTE AND OVERFLOW WITH 2-HOLE FACEPLATE.

2-Hole Brass Overflow Faceplate
 Toe Operated Brass Bathtub Drain Plug
 3 inch Brass Dome Stopper
 14 inch Maximum Vertical Adjustment
 8 inch Maximum Horizontal Adjustment
 1-1/2 inch Schedule 40 PVC Plastic Body
 Tube (Pipe) May be Extended (Replaced) for Custom Installation
 Tube (Pipe) May be Cut to Size at Installation
 Solid Brass Trim

TBD333P **Group 1** - \$266
 Group 2 - \$290
 Group 3 - \$324
 Group 4 - \$381



TOE OPERATED WASTE AND OVERFLOW WITH 1-HOLE FACEPLATE.

1-Hole Brass Overflow Faceplate
 Toe Operated Brass Bathtub Drain Plug
 3 inch Brass Dome Stopper
 14 inch Maximum Vertical Adjustment
 8 inch Maximum Horizontal Adjustment
 1-1/2 inch Schedule 40 PVC Plastic Body
 Tube (Pipe) May be Extended (Replaced) for Custom Installation
 Tube (Pipe) May be Cut to Size at Installation
 Solid Brass Trim

TBD3331P **Group 1** - \$257
 Group 2 - \$281
 Group 3 - \$316
 Group 4 - \$337

Trim By Design

**1-1/2 INCH ABS CABLE OPERATED
WASTE AND OVERFLOW DRAIN.**

1-1/2 inch Schedule 40 ABS (Pipe not included)
Fits Maximum of 22 inch Depth for Baths and Whirlpools
Pivoting Head (Adjustable)
Solid Brass Trim
IAPMO / UPC Listed

TBD335A22 **Group 1** - \$299
Group 2 - \$342
Group 3 - \$418
Group 4 - \$488

**1-1/2 INCH ABS CABLE OPERATED
WASTE AND OVERFLOW DRAIN.**

1-1/2 inch Schedule 40 ABS (Pipe not included)
Fits Maximum of 22 inch Depth for Baths and Whirlpools
Extended Stem and Nut for Tubs up to 5/8 inch Thick
Pivoting Head (Adjustable)
Solid Brass Trim
IAPMO / UPC Listed

TBD335A22EXT **Group 1** - \$389
Group 2 - \$432
Group 3 - \$508
Group 4 - \$578

**1-1/2 INCH ABS CABLE OPERATED
WASTE AND OVERFLOW DRAIN.**

1-1/2 inch Schedule 40 ABS (Pipe not included)
Fits Maximum of 29 inch Depth for Baths and Whirlpools
Pivoting Head (Adjustable)
Solid Brass Trim
IAPMO / UPC Listed

TBD335A29 **Group 1** - \$324
Group 2 - \$367
Group 3 - \$433
Group 4 - \$513

**1-1/2 INCH ABS CABLE OPERATED
WASTE AND OVERFLOW DRAIN.**

1-1/2 inch Schedule 40 ABS (Pipe not included)
Fits Maximum of 29 inch Depth for Baths and Whirlpools
Extended Stem and Nut for Tubs up to 5/8 inch Thick
Pivoting Head (Adjustable)
Solid Brass Trim
IAPMO / UPC Listed

TBD335A29EXT **Group 1** - \$414
Group 2 - \$457
Group 3 - \$523
Group 4 - \$603

**1-1/2 INCH PVC CABLE OPERATED
WASTE AND OVERFLOW DRAIN.**

1-1/2 inch Schedule 40 PVC (Pipe not included)
Fits Maximum of 22 inch Depth for Baths and Whirlpools
Pivoting Head (Adjustable)
Solid Brass Trim
IAPMO / UPC Listed

TBD335P22 **Group 1** - \$299
Group 2 - \$342
Group 3 - \$367
Group 4 - \$415

Trim By Design



1-1/2 INCH PVC CABLE OPERATED WASTE AND OVERFLOW DRAIN.

TBD335P22EXT

Group 1 - \$389
Group 2 - \$432
Group 3 - \$508
Group 4 - \$578

1-1/2 inch Schedule 40 PVC (Pipe not included)
Fits Maximum of 22 inch Depth for Baths and Whirlpools
Extended Stem and Nut for Tubs up to 5/8 inch Thick
Pivoting Head (Adjustable)
Solid Brass Trim
IAPMO / UPC Listed



1-1/2 INCH PVC CABLE OPERATED WASTE AND OVERFLOW DRAIN.

TBD335P29

Group 1 - \$324
Group 2 - \$367
Group 3 - \$433
Group 4 - \$513

1-1/2 inch Schedule 40 PVC (Pipe not included)
Fits Maximum of 29 inch Depth for Baths and Whirlpools
Pivoting Head (Adjustable)
Solid Brass Trim
IAPMO / UPC Listed



1-1/2 INCH PVC CABLE OPERATED WASTE AND OVERFLOW DRAIN.

TBD335P29EXT

Group 1 - \$414
Group 2 - \$457
Group 3 - \$523
Group 4 - \$603

1-1/2 inch Schedule 40 PVC (Pipe not included)
Fits Maximum of 29 inch Depth for Baths and Whirlpools
Extended Stem and Nut for Tubs up to 5/8 inch Thick
Pivoting Head (Adjustable)
Solid Brass Trim
IAPMO / UPC Listed



1-1/2 INCH ABS CABLE OPERATED WASTE AND OVERFLOW DRAIN.

TBD336A22

Group 1 - \$299
Group 2 - \$342
Group 3 - \$418
Group 4 - \$488

1-1/2 inch Schedule 40 ABS (Pipe not included)
Fits Maximum of 22 inch Depth for Baths and Whirlpools
Rigid Head (Non-Adjustable)
Solid Brass Trim
IAPMO / UPC Listed



1-1/2 INCH ABS CABLE OPERATED WASTE AND OVERFLOW DRAIN.

TBD336A22EXT

Group 1 - \$389
Group 2 - \$432
Group 3 - \$508
Group 4 - \$578

1-1/2 inch Schedule 40 ABS (Pipe not included)
Fits Maximum of 22 inch Depth for Baths and Whirlpools
Extended Stem and Nut for Tubs up to 5/8 inch Thick
Rigid Head (Non-Adjustable)
Solid Brass Trim
IAPMO / UPC Listed

Trim By Design

**1-1/2 INCH ABS CABLE OPERATED
WASTE AND OVERFLOW DRAIN.**

1-1/2 inch Schedule 40 ABS (Pipe not included)
Fits Maximum of 29 inch Depth for Baths and Whirlpools
Rigid Head (Non-Adjustable)
Solid Brass Trim
IAPMO / UPC Listed

TBD336A29 **Group 1 - \$324**
Group 2 - \$367
Group 3 - \$433
Group 4 - \$513

**1-1/2 INCH ABS CABLE OPERATED
WASTE AND OVERFLOW DRAIN.**

1-1/2 inch Schedule 40 ABS (Pipe not included)
Fits Maximum of 29 inch Depth for Baths and Whirlpools
Extended Stem and Nut for Tubs up to 5/8 inch Thick
Rigid Head (Non-Adjustable)
Solid Brass Trim
IAPMO / UPC Listed

TBD336A29EXT **Group 1 - \$414**
Group 2 - \$457
Group 3 - \$523
Group 4 - \$603

**1-1/2 INCH PVC CABLE OPERATED
WASTE AND OVERFLOW DRAIN.**

1-1/2 inch Schedule 40 PVC (Pipe not included)
Fits Maximum of 22 inch Depth for Baths and Whirlpools
Rigid Head (Non-Adjustable)
Solid Brass Trim
IAPMO / UPC Listed

TBD336P22 **Group 1 - \$299**
Group 2 - \$342
Group 3 - \$418
Group 4 - \$488

**1-1/2 INCH PVC CABLE OPERATED
WASTE AND OVERFLOW DRAIN.**

1-1/2 inch Schedule 40 PVC (Pipe not included)
Fits Maximum of 22 inch Depth for Baths and Whirlpools
Extended Stem and Nut for Tubs up to 5/8 inch Thick
Rigid Head (Non-Adjustable)
Solid Brass Trim
IAPMO / UPC Listed

TBD336P22EXT **Group 1 - \$389**
Group 2 - \$432
Group 3 - \$508
Group 4 - \$578

**1-1/2 INCH PVC CABLE OPERATED
WASTE AND OVERFLOW DRAIN.**

1-1/2 inch Schedule 40 PVC (Pipe not included)
Fits Maximum of 29 inch Depth for Baths and Whirlpools
Rigid Head (Non-Adjustable)
Solid Brass Trim
IAPMO / UPC Listed

TBD336P29 **Group 1 - \$324**
Group 2 - \$367
Group 3 - \$433
Group 4 - \$513

Trim By Design



1-1/2 INCH PVC CABLE OPERATED WASTE AND OVERFLOW DRAIN.

TBD336P29EXT

Group 1 - \$414

Group 2 - \$457

Group 3 - \$523

Group 4 - \$603

1-1/2 inch Schedule 40 PVC (Pipe not included)
Fits Maximum of 29 inch Depth for Baths and Whirlpools
Extended Stem and Nut for Tubs up to 5/8 inch Thick
Rigid Head (Non-Adjustable)
Solid Brass Trim
IAPMO / UPC Listed



CABLE OPERATED TUBULAR WASTE AND OVERFLOW DRAIN.

TBD337P22

Group 1 - \$199

Group 2 - \$229

Group 3 - \$239

Group 4 - \$299

Fits Maximum of 22 inch Depth for Baths and Whirlpools
Made of 1-1/2 inch Tubular PVC
Rigid Head (Non-Adjustable)
Solid Brass Trim



EXTENSION BOLT FOR CABLE OPERATED WASTE AND OVERFLOW DRAINS.

TBD335-20.42MM

\$15.00

1-1/2 inch Long Bolt for Bathtubs With Thick Flooring
Fits all Trim By Design Cable Operated Bath Wastes
Solid Brass Construction

Trim By Design



ROMAN TUB DRAIN TRIM SET.

Fits Assorted Brands EZ Test Shower Drain Bodies
2-7/8 inch Center-to-Center Screw Holes
3-1/2 inch Diameter
Solid Brass Construction

TBD309

Group 1 - \$155
Group 2 - \$195
Group 3 - \$266
Group 4 - \$333



DELUXE ROMAN TUB DRAIN TRIM SET.

Fits Assorted Brands EZ Test Shower Drain Bodies
2-7/8 inch Center-to-Center Screw Holes
3-1/2 inch Diameter Drain Top
4-1/4 inch Tile Square
Solid Brass Construction

TBD310

Group 1 - \$185
Group 2 - \$235
Group 3 - \$315
Group 4 - \$394

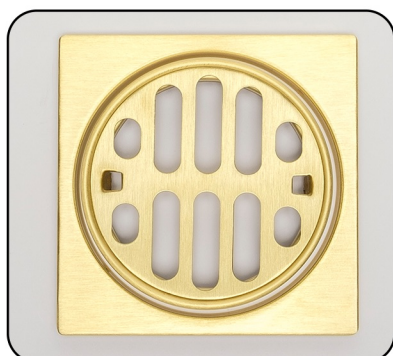


DELUXE DRAIN TRIM SET.

Fits Assorted Brands EZ Test Shower Drain Bodies
2-7/8 inch Center-to-Center Screw Holes
3-9/16 inch Diameter Crown
4-1/4 inch Tile Square
Solid Brass Construction

TBD346

Group 1 - \$69
Group 2 - \$85
Group 3 - \$129
Group 4 - \$161



DELUXE DRAIN TRIM SET.

Fits Frank Pattern Domestic (Instant Set)
Part Number: #20SD Shower Drain
3-1/2 inch Crown
2-7/8 inch Prong-to-Prong Grill
4-1/4 inch Tile Square
Solid Brass Construction

TBD349

Group 1 - \$79
Group 2 - \$86
Group 3 - \$99
Group 4 - \$125



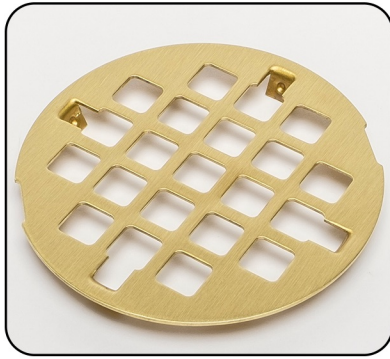
4-1/2 INCH O.D. SNAP-IN STRAINER.

3-1/8 inch Prong-to-Prong
Solid Brass Construction

TBD350

Group 1 - \$49
Group 2 - \$56
Group 3 - \$75
Group 4 - \$99

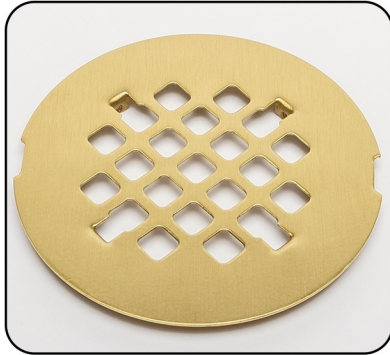
Trim By Design



3-1/4 INCH O.D. SNAP-IN STRAINER.
2-7/8 inch Prong-to-Prong
Solid Brass Construction

TBD351

Group 1 - \$39
Group 2 - \$55
Group 3 - \$62
Group 4 - \$78



4-1/4 INCH O.D. SNAP-IN STRAINER.
2-7/8 inch Prong-to-Prong
Solid Brass Construction

TBD352

Group 1 - \$49
Group 2 - \$56
Group 3 - \$69
Group 4 - \$90



4 INCH O.D. SHOWER STRAINER WITH SCREWS.
3-3/8 inch Center-to-Center Screw Holes
Solid Brass Construction

TBD353

Group 1 - \$49
Group 2 - \$56
Group 3 - \$69
Group 4 - \$90



4-1/4 INCH O.D. SHOWER STRAINER WITH SCREWS.
2-5/8 inch Center-to-Center Screw Holes
Solid Brass Construction

TBD354

Group 1 - \$49
Group 2 - \$56
Group 3 - \$69
Group 4 - \$90

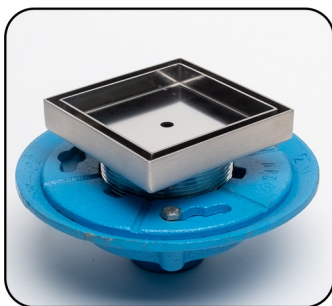


4-1/4 INCH O.D. SNAP-IN STRAINER.
2-7/8 inch Prong-to-Prong
Solid Brass Construction

TBD355

Group 1 - \$49
Group 2 - \$56
Group 3 - \$69
Group 4 - \$90

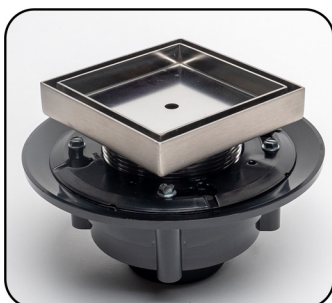
Trim By Design



FLOOR AND SHOWER SQUARE TILE DRAIN.

Fits 2 inch No-Hub Cast Iron Pipe
Includes Cast Iron Drain Body
5 inch Square Stainless Steel Tile Insert Top
Includes Hair Strainer Basket and Lifting Key

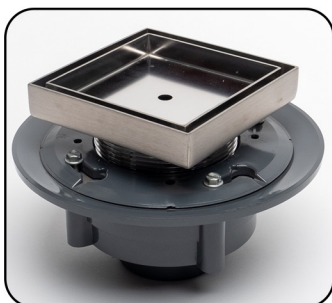
TBD364 **Group 1** - \$410
Group 2 - \$534
Group 3 - \$594
Group 4 - \$681



FLOOR AND SHOWER SQUARE TILE DRAIN.

Fits 2 inch ABS Pipe
Includes ABS Drain Body
5 inch Square Stainless Steel Tile Insert Top
Includes Hair Strainer Basket and Lifting Key

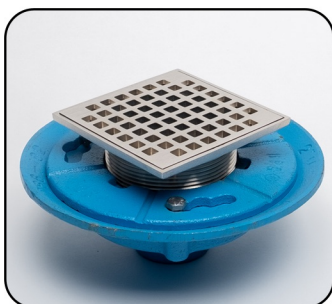
TBD364A **Group 1** - \$290
Group 2 - \$414
Group 3 - \$474
Group 4 - \$561



FLOOR AND SHOWER SQUARE TILE DRAIN.

Fits 2 inch PVC Pipe
Includes PVC Drain Body
5 inch Square Stainless Steel Tile Insert Top
Includes Hair Strainer Basket and Lifting Key

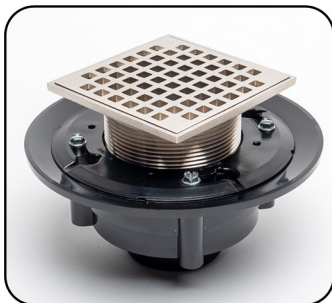
TBD364P **Group 1** - \$290
Group 2 - \$414
Group 3 - \$474
Group 4 - \$561



5 INCH SQUARE FLOOR SHOWER DRAIN.

Fits 2 inch No-Hub Cast Iron Pipe
Includes Cast Iron Drain Body
Magnetically Secured for Easy Access
Solid Brass Heavy-Duty Drain Top

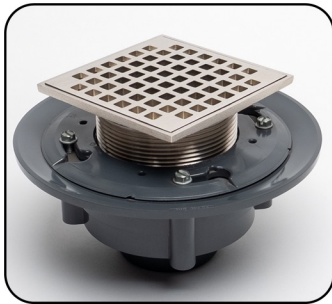
TBD362 **Group 1** - \$550
Group 2 - \$594
Group 3 - \$620
Group 4 - \$744



5 INCH SQUARE FLOOR SHOWER DRAIN.

Fits 2 inch ABS Pipe
Includes ABS Drain Body
Magnetically Secured for Easy Access
Solid Brass Heavy-Duty Drain Top

TBD362A **Group 1** - \$430
Group 2 - \$474
Group 3 - \$499
Group 4 - \$624

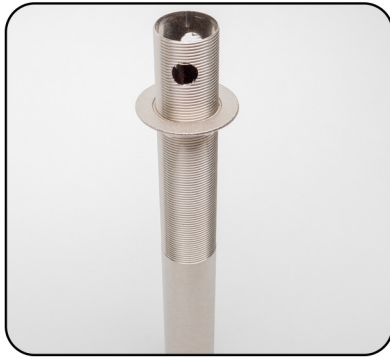


5 INCH SQUARE FLOOR SHOWER DRAIN.

Fits 2 inch PVC Pipe
Includes PVC Drain Body
Magnetically Secured for Easy Access
Solid Brass Heavy-Duty Drain Top

TBD362P **Group 1** - \$430
Group 2 - \$474
Group 3 - \$499
Group 4 - \$624

Trim By Design



10 INCH LAVATORY DRAIN TAILPIECE WITH OVERFLOW HOLES.

5-1/2 inch of Thread

Designed for Thick Countertops and/or Sinks

Works with TBD400, TBD4001, TBD402, TBD404,
TBD4021, TBD4033, TBD410 and TBD4101

Solid Brass Construction

TBD473

Group 1 - \$110

Group 2 - \$139

Group 3 - \$160

Group 4 - \$199



10 INCH LAVATORY DRAIN TAILPIECE WITHOUT OVERFLOW HOLES.

5-1/2 inch of Thread

Designed for Thick Countertops and/or Sinks

Works with TBD401, TBD4011, TBD403, TBD405,
TBD4031, TBD4035, TBD411 and TBD4111

Solid Brass Construction

TBD475

Group 1 - \$110

Group 2 - \$139

Group 3 - \$160

Group 4 - \$199



LIFT & TURN DRAIN ASSEMBLY WITH OVERFLOW HOLES.

Fits 1-1/2 inch Opening

1-1/4 inch Diameter Tailpiece Connection

Solid Brass Construction

IAPMO / UPC LISTED

COMPLETELY PLATED FOR EXPOSED INSTALLATION

TBD400

Group 1 - \$159

Group 2 - \$179

Group 3 - \$195

Group 4 - \$244



LIFT & TURN DRAIN ASSEMBLY WITH OVERFLOW HOLES.

Fits 1-1/2 inch Opening

1-1/4 inch Diameter Tailpiece Connection

Solid Brass Construction

IAPMO / UPC LISTED

EXPOSED PARTS PLATED

TBD4001

Group 1 - \$123

Group 2 - \$139



LIFT & TURN DRAIN ASSEMBLY WITHOUT OVERFLOW HOLES.

Fits 1-1/2 inch Opening

1-1/4 inch Diameter Tailpiece Connection

Solid Brass Construction

IAPMO / UPC LISTED

COMPLETELY PLATED FOR EXPOSED INSTALLATION

TBD401

Group 1 - \$159

Group 2 - \$179

Group 3 - \$195

Group 4 - \$244

Trim By Design



LIFT & TURN DRAIN ASSEMBLY WITHOUT OVERFLOW HOLES.

Fits 1-1/2 inch Opening
1-1/4 inch Diameter Tailpiece Connection
Solid Brass Construction
IAPMO / UPC LISTED
EXPOSED PARTS PLATED

TBD4011

Group 1 - \$123
Group 2 - \$139



7-HOLE FLAT GRID STRAINER DRAIN ASSEMBLY WITH OVERFLOW HOLES.

Fits 1-1/2 inch Opening
1-1/4 inch Diameter Tailpiece Connection
Solid Brass Construction
IAPMO / UPC LISTED

COMPLETELY PLATED FOR EXPOSED INSTALLATION

TBD402

Group 1 - \$129
Group 2 - \$145
Group 3 - \$199
Group 4 - \$249



7-HOLE FLAT GRID STRAINER DRAIN ASSEMBLY WITHOUT OVERFLOW HOLES.

Fits 1-1/2 inch Opening
1-1/4 inch Diameter Tailpiece Connection
Solid Brass Construction
IAPMO / UPC LISTED

COMPLETELY PLATED FOR EXPOSED INSTALLATION

TBD403

Group 1 - \$129
Group 2 - \$145
Group 3 - \$199
Group 4 - \$249



SLOTTED FLAT GRID STRAINER DRAIN ASSEMBLY WITH OVERFLOW HOLES.

Fits 1-1/2 inch Opening
1-1/4 inch Diameter Tailpiece Connection
Solid Brass Construction
IAPMO / UPC LISTED

COMPLETELY PLATED FOR EXPOSED INSTALLATION

TBD4021

Group 1 - \$129
Group 2 - \$145
Group 3 - \$199
Group 4 - \$249



SLOTTED FLAT GRID STRAINER DRAIN ASSEMBLY WITHOUT OVERFLOW HOLES.

Fits 1-1/2 inch Opening
1-1/4 inch Diameter Tailpiece Connection
Solid Brass Construction
IAPMO / UPC LISTED

COMPLETELY PLATED FOR EXPOSED INSTALLATION

TBD4031

Group 1 - \$129
Group 2 - \$145
Group 3 - \$199
Group 4 - \$249

Trim By Design



CHANNEL FLAT GRID STRAINER DRAIN ASSEMBLY WITH OVERFLOW HOLES.

Fits 1-1/2 inch Opening
1-1/4 inch Diameter Tailpiece Connection
Solid Brass Construction
IAPMO / UPC LISTED

COMPLETELY PLATED FOR EXPOSED INSTALLATION

TBD4033

Group 1 - \$129
Group 2 - \$145
Group 3 - \$199
Group 4 - \$249



CHANNEL FLAT GRID STRAINER DRAIN ASSEMBLY WITHOUT OVERFLOW HOLES.

Fits 1-1/2 inch Opening
1-1/4 inch Diameter Tailpiece Connection
Solid Brass Construction
IAPMO / UPC LISTED

COMPLETELY PLATED FOR EXPOSED INSTALLATION

TBD4035

Group 1 - \$129
Group 2 - \$145
Group 3 - \$199
Group 4 - \$249



DAISY GRID STRAINER DRAIN ASSEMBLY WITH OVERFLOW HOLES.

Fits 1-1/2 inch Opening
1-1/4 inch Diameter Tailpiece Connection
Solid Brass Construction
IAPMO / UPC LISTED

COMPLETELY PLATED FOR EXPOSED INSTALLATION

TBD404

Group 1 - \$129
Group 2 - \$145
Group 3 - \$199
Group 4 - \$249



DAISY GRID STRAINER DRAIN ASSEMBLY WITHOUT OVERFLOW HOLES.

Fits 1-1/2 inch Opening
1-1/4 inch Diameter Tailpiece Connection
Solid Brass Construction
IAPMO / UPC LISTED

COMPLETELY PLATED FOR EXPOSED INSTALLATION

TBD405

Group 1 - \$129
Group 2 - \$145
Group 3 - \$199
Group 4 - \$249



19-HOLE FLAT GRID STRAINER DRAIN ASSEMBLY WITH OVERFLOW HOLES.

Fits 1-1/2 inch Opening
1-1/4 inch Diameter Tailpiece Connection
Solid Brass Construction
IAPMO / UPC LISTED

COMPLETELY PLATED FOR EXPOSED INSTALLATION

TBD410

Group 1 - \$129
Group 2 - \$145
Group 3 - \$199
Group 4 - \$249

Trim By Design



19-HOLE FLAT GRID STRAINER DRAIN ASSEMBLY WITH OVERFLOW HOLES.

Fits 1-1/2 inch Opening
1-1/4 inch Diameter Tailpiece Connection
Solid Brass Construction
IAPMO / UPC LISTED
EXPOSED PARTS PLATED

TBD4101

Group 1 - \$99
Group 2 - \$125



19-HOLE FLAT GRID STRAINER DRAIN ASSEMBLY WITHOUT OVERFLOW HOLES.

Fits 1-1/2 inch Opening
1-1/4 inch Diameter Tailpiece Connection
Solid Brass Construction
IAPMO / UPC LISTED
COMPLETELY PLATED FOR EXPOSED INSTALLATION

TBD411

Group 1 - \$129
Group 2 - \$145
Group 3 - \$199
Group 4 - \$249



19-HOLE FLAT GRID STRAINER DRAIN ASSEMBLY WITHOUT OVERFLOW HOLES.

Fits 1-1/2 inch Opening
1-1/4 inch Diameter Tailpiece Connection
Solid Brass Construction
IAPMO / UPC LISTED
EXPOSED PARTS PLATED

TBD4111

Group 1 - \$99
Group 2 - \$125



POP-UP LAVATORY DRAIN ASSEMBLY WITH OVERFLOW HOLES.

Fits 1-1/2 inch Opening
1-1/4 inch Diameter Tailpiece Connection
Solid Brass Construction (Hardware not Finished)
COMPLETELY PLATED FOR EXPOSED INSTALLATION

TBD406

Group 1 - \$199
Group 2 - \$225
Group 3 - \$259
Group 4 - \$324



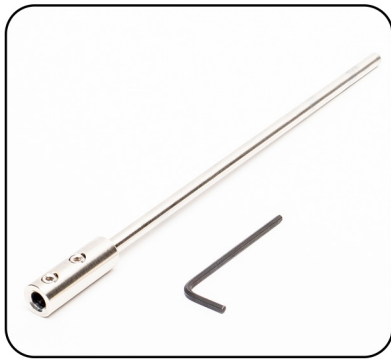
POP-UP LAVATORY DRAIN ASSEMBLY WITHOUT OVERFLOW HOLES.

Fits 1-1/2 inch Opening
1-1/4 inch Diameter Tailpiece Connection
Solid Brass Construction (Hardware not Finished)
COMPLETELY PLATED FOR EXPOSED INSTALLATION

TBD407

Group 1 - \$199
Group 2 - \$225
Group 3 - \$259
Group 4 - \$324

Trim By Design



POP-UP LIFT ROD EXTENSION.

Fits Pop-Up Rod or Horizontal Lift Rod for
Pop-Up Lavatory Assembly
Chrome Plated Brass

TBD4065

\$29



HAND OPERATED POP-UP LAVATORY DRAIN ASSEMBLY WITH OVERFLOW HOLES.

Fits 1-1/2 inch Opening
1-1/4 inch Diameter Tailpiece Connection
Solid Brass Construction

COMPLETELY PLATED FOR EXPOSED INSTALLATION

TBD408

Group 1 - \$209

Group 2 - \$235

Group 3 - \$269

Group 4 - \$334



HAND OPERATED POP-UP LAVATORY DRAIN ASSEMBLY WITHOUT OVERFLOW HOLES.

Fits 1-1/2 inch Opening
1-1/4 inch Diameter Tailpiece Connection
Solid Brass Construction

COMPLETELY PLATED FOR EXPOSED INSTALLATION

TBD409

Group 1 - \$209

Group 2 - \$235

Group 3 - \$269

Group 4 - \$334



19-HOLE FLAT OFFSET GRID STRAINER DRAIN ASSEMBLY WITH OVERFLOW HOLES.

Fits 1-1/2 inch Opening
1-1/4 inch Diameter Tailpiece Connection
Solid Brass Construction

COMPLETELY PLATED FOR EXPOSED INSTALLATION

TBD421

Group 1 - \$149

Group 2 - \$273

Group 3 - \$323



19-HOLE FLAT OFFSET GRID STRAINER DRAIN ASSEMBLY WITHOUT OVERFLOW HOLES.

Fits 1-1/2 inch Opening
1-1/4 inch Diameter Tailpiece Connection
Solid Brass Construction

COMPLETELY PLATED FOR EXPOSED INSTALLATION

TBD4211

Group 1 - \$149

Group 2 - \$273

Group 3 - \$323

Trim By Design



SWIVEL DRAIN ASSEMBLY WITH OVERFLOW HOLES.

Fits 1-1/2 inch Opening
1-1/4 inch Diameter Tailpiece Connection
Solid Brass Construction
IAPMO / UPC LISTED

COMPLETELY PLATED FOR EXPOSED INSTALLATION

TBD412 **Group 1 - \$119**
Group 2 - \$140
Group 3 - \$172



SWIVEL DRAIN ASSEMBLY WITHOUT OVERFLOW HOLES.

Fits 1-1/2 inch Opening
1-1/4 inch Diameter Tailpiece Connection
Solid Brass Construction
IAPMO / UPC LISTED

COMPLETELY PLATED FOR EXPOSED INSTALLATION

TBD413 **Group 1 - \$119**
Group 2 - \$140
Group 3 - \$172



FIXED DOME DRAIN ASSEMBLY WITHOUT OVERFLOW HOLES.

Fits 1-1/2 inch Opening
2-3/4 inch Diameter Umbrella Dome Top
1-1/4 inch Diameter Tailpiece Connection
Solid Brass Construction
IAPMO / UPC LISTED

COMPLETELY PLATED FOR EXPOSED INSTALLATION

TBD414 **Group 1 - \$169**
Group 2 - \$189
Group 3 - \$229
Group 4 - \$286



DAISY GRID DRAIN STRAINER ASSEMBLY WITHOUT OVERFLOW HOLES.

Fits 1-3/4 inch Opening
2-1/2 inch Daisy Drain Plug
1-1/4 inch Diameter Tailpiece Connection
Solid Brass Construction

COMPLETELY PLATED FOR EXPOSED INSTALLATION

TBD415 **Group 1 - \$169**
Group 2 - \$189
Group 3 - \$229
Group 4 - \$286



TOUCH SEAL LAVATORY DRAIN ASSEMBLY WITH OVERFLOW HOLES.

Fits 1-1/2 inch Opening
4 inch Body for Thick Counter / Sink Installations
1-1/4 inch Diameter Tailpiece Connection
Solid Brass Construction

COMPLETELY PLATED FOR EXPOSED INSTALLATION

TBD4161 **Group 1 - \$169**
Group 2 - \$189
Group 3 - \$229
Group 4 - \$286

Trim By Design



TOUCH SEAL LAVATORY DRAIN ASSEMBLY WITHOUT OVERFLOW HOLES.

Fits 1-1/2 inch Opening
4 inch Body for Thick Counter / Sink Installations
1-1/4 inch Diameter Tailpiece Connection
Solid Brass Construction

COMPLETELY PLATED FOR EXPOSED INSTALLATION

TBD4162

Group 1 - \$169
Group 2 - \$189
Group 3 - \$229
Group 4 - \$286



TOUCH SEAL DOME DRAIN ASSEMBLY WITH OVERFLOW HOLES.

Fits 1-1/2 inch Opening
2-1/2 inch Diameter Dome Top
1-1/4 inch Diameter Tailpiece Connection
Solid Brass Construction
IAPMO / UPC LISTED

COMPLETELY PLATED FOR EXPOSED INSTALLATION

TBD417

Group 1 - \$169
Group 2 - \$189
Group 3 - \$229
Group 4 - \$286



TOUCH SEAL DOME DRAIN ASSEMBLY WITHOUT OVERFLOW HOLES.

Fits 1-1/2 inch Opening
2-1/2 inch Diameter Dome Top
1-1/4 inch Diameter Tailpiece Connection
Solid Brass Construction
IAPMO / UPC LISTED

COMPLETELY PLATED FOR EXPOSED INSTALLATION

TBD418

Group 1 - \$169
Group 2 - \$189
Group 3 - \$229
Group 4 - \$286



SQUARE FIXED DOME DRAIN ASSEMBLY WITHOUT OVERFLOW HOLES.

Fits 1-1/2 inch Opening
2-1/2 inch Square Top
1-1/4 inch Diameter Tailpiece
Solid Brass Construction
IAPMO / UPC LISTED

COMPLETELY PLATED FOR EXPOSED INSTALLATION

TBD419

Group 1 - \$119
Group 2 - \$140
Group 3 - \$172

Trim By Design



MOUNTING SPACER RING FOR THIN WALL SINKS.

Allows Lavatory Drains with Overflow Holes to be
Used with Thin Wall Sinks or Sinks Without Overflow Holes
Includes Mack Basin Gasket
Solid Brass Construction

TBD450

Group 1 - \$50
Group 2 - \$64
Group 3 - \$86
Group 4 - \$108



MOUNTING RING FOR VESSEL SINKS.

Designed to Work for Above Counter
Vessel Sinks without Overflow
Provides Stable Base for Curved Vessel Sinks
Includes 2 Rubber Gaskets
Solid Brass Construction

TBD490

Group 1 - \$63
Group 2 - \$115
Group 3 - \$139
Group 4 - \$174



1-1/2 INCH O.D. X 1-1/4 INCH O.D. X 12 INCH REDUCING FLANGED TAILPIECE.

Brass Nut
17-Gauge Brass
Solid Brass Construction

TBD463

Group 1 - \$49
Group 2 - \$119
Group 3 - \$145
Group 4 - \$181



1-1/4 INCH O.D. X 12 INCH THREAD BOTH ENDS TAILPIECE.

17-Gauge Brass
Solid Brass Construction

TBD467

Group 1 - \$109
Group 2 - \$125
Group 3 - \$146
Group 4 - \$183



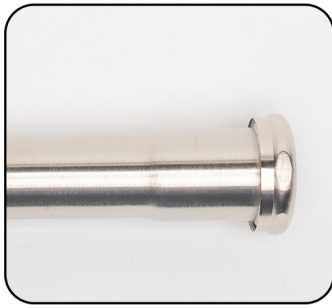
1-1/4 INCH O.D. X 16 INCH THREAD BOTH ENDS TAILPIECE.

17-Gauge Brass
Solid Brass Construction

TBD4671

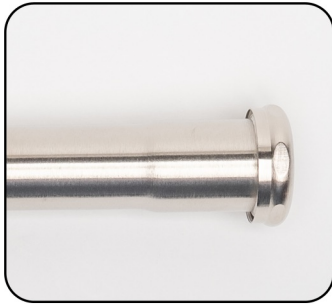
Group 1 - \$155
Group 2 - \$169
Group 3 - \$196
Group 4 - \$245

Trim By Design



1-1/4 INCH O.D. X 8 INCH
SLIP JOINT EXTENSION TUBE.
Brass Nut
17-Gauge Brass
Solid Brass Construction

TBD466
Group 1 - \$99
Group 2 - \$110
Group 3 - \$129



1-1/4 INCH O.D. X 12 INCH
SLIP JOINT EXTENSION TUBE.
Brass Nut
17-Gauge Brass
Solid Brass Construction

TBD468
Group 1 - \$105
Group 2 - \$129
Group 3 - \$159
Group 4 - \$199



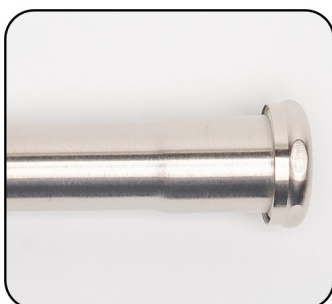
1-1/4 INCH O.D. X 16 INCH
SLIP JOINT EXTENSION TUBE.
Brass Nut
17-Gauge Brass
Solid Brass Construction

TBD4681
Group 1 - \$163
Group 2 - \$199
Group 3 - \$209
Group 4 - \$261



1-1/2 INCH O.D. X 12 INCH
SLIP JOINT EXTENSION TUBE.
Brass Nut
17-Gauge Brass
Solid Brass Construction

TBD470
Group 1 - \$129
Group 2 - \$145
Group 3 - \$168
Group 4 - \$210



1-1/2 INCH O.D. X 16 INCH
SLIP JOINT EXTENSION TUBE.
Brass Nut
17-Gauge Brass
Solid Brass Construction

TBD4701
Group 1 - \$189
Group 2 - \$210
Group 3 - \$229
Group 4 - \$286

Trim By Design



**1-1/2 INCH O.D. X 12 INCH
FLANGED TAILPIECE.**
17-Gauge Brass
Solid Brass Construction

TBD471 **Group 1 - \$106**
Group 2 - \$125
Group 3 - \$139
Group 4 - \$174



**1-1/4 INCH O.D. X 12 INCH
FLANGED TAILPIECE.**
17-Gauge Brass
Solid Brass Construction

TBD472 **Group 1 - \$99**
Group 2 - \$129
Group 3 - \$152
Group 4 - \$190



**1-1/4 INCH O.D. X 8 INCH Y-BRANCH
SLIP JOINT EXTENSION TUBE.**
7/8 inch O.D. (3/4 inch Copper) Y-Branch Inlet
Brass Nut
17-Gauge Brass
Solid Brass Construction

TBD477 **Group 1 - \$99**
Group 2 - \$129
Group 3 - \$153
Group 4 - \$192



**1-1/2 INCH O.D. X 8 INCH Y-BRANCH
SLIP JOINT EXTENSION TUBE.**
7/8 inch O.D. (3/4 inch Copper) Y-Branch Inlet
Brass Nut
17-Gauge Brass
Solid Brass Construction

TBD478 **Group 1 - \$119**
Group 2 - \$139
Group 3 - \$155
Group 4 - \$194



**1-1/4 INCH O.D. BRASS SLIP JOINT
DRAINAGE COUPLING.**
Designed for Tubular Drainage Applications
Brass Nuts
Solid Brass Construction

TBD480 **Group 1 - \$94**
Group 2 - \$125
Group 3 - \$146
Group 4 - \$183

Trim By Design



**1-1/4 INCH O.D. BRASS SLIP JOINT 45 DEGREE
DRAINAGE ELBOW.**

Designed for Tubular Drainage Applications
Brass Nuts
Solid Brass Construction

TBD482

Group 1 - \$94
Group 2 - \$125
Group 3 - \$146
Group 4 - \$183



**1-1/4 INCH O.D. BRASS SLIP JOINT 90 DEGREE
DRAINAGE ELBOW.**

Designed for Tubular Drainage Applications
Brass Nuts
Solid Brass Construction

TBD484

Group 1 - \$94
Group 2 - \$125
Group 3 - \$146
Group 4 - \$183



**1-1/2 INCH O.D. BRASS SLIP JOINT
DRAINAGE COUPLING.**

Designed for Tubular Drainage Applications
Brass Nuts
Solid Brass Construction

TBD485

Group 1 - \$94
Group 2 - \$125
Group 3 - \$146
Group 4 - \$183



**1-1/2 INCH O.D. BRASS SLIP JOINT 45 DEGREE
DRAINAGE ELBOW.**

Designed for Tubular Drainage Applications
Brass Nuts
Solid Brass Construction

TBD487

Group 1 - \$94
Group 2 - \$125
Group 3 - \$146
Group 4 - \$183



**1-1/2 INCH O.D. BRASS SLIP JOINT 90 DEGREE
DRAINAGE ELBOW.**

Designed for Tubular Drainage Applications
Brass Nuts
Solid Brass Construction

TBD489

Group 1 - \$94
Group 2 - \$125
Group 3 - \$146
Group 4 - \$183

Trim By Design


1-1/4 INCH O.D. X 1-1/4 INCH O.D. P-TRAP KIT WITH FLANGE. TBD430

11-1/2 inch Overall Length End-To-End

Includes Brass High Box Flange

17-Gauge Brass with Brass Nuts

Solid Brass Construction

Group 1 - \$187

Group 2 - \$294

Group 3 - \$320

Group 4 - \$401


1-1/4 INCH O.D. X 1-1/4 INCH O.D. P-TRAP LESS FLANGE. TBD4301

11-1/2 inch Overall Length End-To-End

17-Gauge Brass with Brass Nuts

Solid Brass Construction

Group 1 - \$125

Group 2 - \$225

Group 3 - \$245

Group 4 - \$307


1-1/4 INCH O.D. X 1-1/4 INCH O.D. P-TRAP KIT WITH FLANGE. TBD430-18

18 inch Overall Length End-To-End

Includes Brass High Box Flange

17-Gauge Brass with Brass Nuts

Solid Brass Construction

Group 1 - \$299

Group 2 - \$324

Group 3 - \$350

Group 4 - \$438


1-1/4 INCH O.D. X 1-1/4 INCH O.D. P-TRAP KIT WITH FLANGE. TBD430-24

24 inch Overall Length End-To-End

Includes Brass High Box Flange

17-Gauge Brass with Brass Nuts

Solid Brass Construction

Group 1 - \$339

Group 2 - \$359

Group 3 - \$389

Group 4 - \$486


1-1/4 INCH O.D. X 1-1/2 INCH O.D. P-TRAP KIT WITH FLANGE. TBD431

12-1/2 inch Overall Length End-To-End

Includes Brass High Box Flange

17-Gauge Brass with Brass Nuts

Solid Brass Construction

Group 1 - \$211

Group 2 - \$298

Group 3 - \$344

Group 4 - \$430


1-1/4 INCH O.D. X 1-1/2 INCH O.D. P-TRAP LESS FLANGE. TBD4311

12-1/2 inch Overall Length End-to-End

17-Gauge Brass with Brass Nuts

Solid Brass Construction

Group 1 - \$149

Group 2 - \$229

Group 3 - \$269

Group 4 - \$336

Trim By Design



1-1/4 INCH O.D. X 1-1/2 INCH O.D. P-TRAP KIT WITH FLANGE. TBD431-19
 19 inch Overall Length End-to-End
 Includes Brass High Box Flange
 17-Gauge Brass with Brass Nuts
 Solid Brass Construction

Group 1 - \$276
Group 2 - \$338
Group 3 - \$377
Group 4 - \$472



1-1/4 INCH O.D. X 1-1/2 INCH O.D. P-TRAP KIT WITH FLANGE. TBD431-24
 24 inch Overall Length End-to-End
 Includes Brass High Box Flange
 17-Gauge Brass with Brass Nuts
 Solid Brass Construction

Group 1 - \$349
Group 2 - \$369
Group 3 - \$399
Group 4 - \$499



1-1/2 INCH O.D. X 1-1/2 INCH O.D. P-TRAP KIT WITH FLANGE. TBD432
 12-1/2 inch Overall Length End-to-End
 Includes Brass High Box Flange
 17-Gauge Brass with Brass Nuts
 Solid Brass Construction

Group 1 - \$211
Group 2 - \$298
Group 3 - \$344
Group 4 - \$430



1-1/2 INCH O.D. X 1-1/2 INCH O.D. P-TRAP LESS FLANGE. TBD4321
 12-1/2 inch Overall Length End-to-End
 17-Gauge Brass with Brass Nuts
 Solid Brass Construction

Group 1 - \$149
Group 2 - \$229
Group 3 - \$269
Group 4 - \$336



1-1/2 INCH O.D. X 1-1/2 INCH O.D. P-TRAP KIT WITH FLANGE. TBD432-19
 19 inch Overall Length End-to-End
 Includes Brass High Box Flange
 17-Gauge Brass with Brass Nuts
 Solid Brass Construction

Group 1 - \$276
Group 2 - \$338
Group 3 - \$377
Group 4 - \$472



1-1/2 INCH O.D. X 1-1/2 INCH O.D. P-TRAP KIT WITH FLANGE. TBD432-24
 24 inch Overall Length End-to-End
 Includes Brass High Box Flange
 17-Gauge Brass with Brass Nuts
 Solid Brass Construction

Group 1 - \$349
Group 2 - \$369
Group 3 - \$399
Group 4 - \$499

Trim By Design



**1-1/4 INCH O.D. X 1-1/4 INCH O.D. CYLINDER
STYLE TRAP.**

18-1/2 inch Overall Length End-To-End
IAPMO / UPC LISTED
Solid Brass Construction

TBD440

Group 1 - \$439
Group 2 - \$499
Group 3 - \$579
Group 4 - \$725



**1-1/4 INCH O.D. CONTEMPORARY FLAT PATTERN
FLANGE.**

1-1/4 in. I.D. X 2-3/4 in. O.D. X 3/8 in. HT.
Solid Brass Construction

TBD462

Group 1 - \$74
Group 2 - \$82
Group 3 - \$86
Group 4 - \$108



1-1/2 INCH I.P.S. BOX FLANGE.

1-7/8 in. I.D. X 3 in. O.D. X 1-11/16 in. HT.
Solid Brass Construction

TBD454

Group 1 - \$74
Group 2 - \$82
Group 3 - \$86
Group 4 - \$108

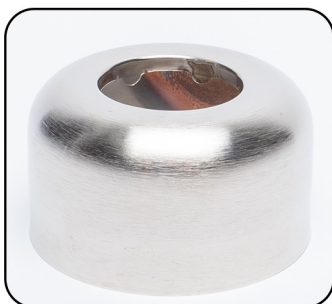


1-1/4 INCH O.D. BOX FLANGE.

1-1/4 in. I.D. X 3 in. O.D. X 1-11/16 in. HT.
Solid Brass Construction

TBD455

Group 1 - \$62
Group 2 - \$69
Group 3 - \$75
Group 4 - \$94



1-1/2 INCH O.D. BOX FLANGE.

1-1/2 in. I.D. X 3 in. O.D. X 1-11/16 in. HT.
Solid Brass Construction

TBD456

Group 1 - \$62
Group 2 - \$69
Group 3 - \$75
Group 4 - \$94

Trim By Design



1-1/4 INCH O.D. BELL FLANGE.

1-1/4 in. I.D. X 3 in. O.D. X 1-3/8 in. HT.

Solid Brass Construction

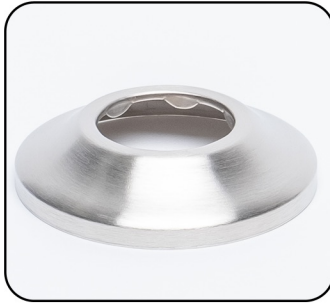
TBD457

Group 1 - \$62

Group 2 - \$69

Group 3 - \$75

Group 4 - \$94



1-1/4 INCH O.D. SURE GRIP FLANGE.

1-1/4 in. I.D. X 2-3/4 in. O.D. X 11/16 in. HT.

Solid Brass Construction

TBD459

Group 1 - \$62

Group 2 - \$69

Group 3 - \$75

Group 4 - \$94



1-1/2 INCH O.D. SURE GRIP FLANGE.

1-1/2 in. I.D. X 2-3/4 in. O.D. X 11/16 in. HT.

Solid Brass Construction

TBD460

Group 1 - \$62

Group 2 - \$69

Group 3 - \$75

Group 4 - \$94



1-1/2 INCH I.P.S. SURE GRIP FLANGE.

1-7/8 in. I.D. X 3 in. O.D. X 7/16 in. HT.

Solid Brass Construction

TBD461

Group 1 - \$62

Group 2 - \$69

Group 3 - \$75

Group 4 - \$94



1-1/4 INCH SLIP JOINT NUT.

Solid Brass Construction

TBD650

Group 1 - \$35

Group 2 - \$39

Group 3 - \$45

Group 4 - \$68



1-1/2 INCH SLIP JOINT NUT.

Solid Brass Construction

TBD652

Group 1 - \$35

Group 2 - \$39

Group 3 - \$45

Group 4 - \$68

Trim By Design


1/4-TURN ANGLE STOP VALVE WITH OVAL HANDLE.

1/2 in. Female Inlet X 3/8 in. O.D. Compression Outlet
 1/4-Turn Ceramic Disc Cartridge
 Temperature Rating: 40° - 140° F
 Pressure Rating: 125 PSI Maximum
 Lead Free Brass Construction

TBD501CQT **Group 1** - \$175
Group 2 - \$189
Group 3 - \$263
Group 4 - \$329


1/4-TURN ANGLE STOP VALVE WITH LEVER HANDLE.

1/2 in. Female Inlet X 3/8 in. O.D. Compression Outlet
 1/4-Turn Ceramic Disc Cartridge
 Temperature Rating: 40° - 140° F
 Pressure Rating: 125 PSI Maximum
 Lead Free Brass Construction

TBD501CQTL **Group 1** - \$194
Group 2 - \$225
Group 3 - \$295
Group 4 - \$369


1/4-TURN ANGLE STOP VALVE WITH CROSS HANDLE.

1/2 in. Female Inlet X 3/8 in. O.D. Compression Outlet
 1/4-Turn Ceramic Disc Cartridge
 Temperature Rating: 40° - 140° F
 Pressure Rating: 125 PSI Maximum
 Lead Free Brass Construction

TBD501CQTX **Group 1** - \$194
Group 2 - \$225
Group 3 - \$295
Group 4 - \$369


1/4-TURN ANGLE STOP VALVE WITH PORCELAIN INSERT CROSS HANDLE.

1/2 in. Female Inlet X 3/8 in. O.D. Compression Outlet
 1/4-Turn Ceramic Disc Cartridge
 Supplied with "PLAIN" Porcelain Insert
 Temperature Rating: 40° - 140° F
 Pressure Rating: 125 PSI Maximum
 Lead Free Brass Construction

TBD501CQTX-2 **Group 1** - \$216
Group 2 - \$250
Group 3 - \$328
Group 4 - \$410


1/4-TURN ANGLE STOP VALVE WITH OVAL HANDLE.

1/2 in. Nom. Compression Inlet X 3/8 in. O.D. Compression Outlet
 For 1/2 inch Copper Pipe
 1/4-Turn Ceramic Disc Cartridge
 Temperature Rating: 40° - 140° F
 Pressure Rating: 125 PSI Maximum
 Lead Free Brass Construction

TBD503CQT **Group 1** - \$175
Group 2 - \$189
Group 3 - \$263
Group 4 - \$329


1/4-TURN ANGLE STOP VALVE WITH LEVER HANDLE.

1/2 in. Nom. Compression Inlet X 3/8 in. O.D. Compression Outlet
 For 1/2 inch Copper Pipe
 1/4-Turn Ceramic Disc Cartridge
 Temperature Rating: 40° - 140° F
 Pressure Rating: 125 PSI Maximum
 Lead Free Brass Construction

TBD503CQTL **Group 1** - \$194
Group 2 - \$225
Group 3 - \$295
Group 4 - \$369

Trim By Design



1/4-TURN ANGLE STOP VALVE WITH CROSS HANDLE.

TBD503CQTX

1/2 in. Nom. Compression Inlet X 3/8 in. O.D. Compression Outlet
For 1/2 inch Copper Pipe
1/4-Turn Ceramic Disc Cartridge
Temperature Rating: 40° - 140° F
Pressure Rating: 125 PSI Maximum
Lead Free Brass Construction

Group 1 - \$194
Group 2 - \$225
Group 3 - \$295
Group 4 - \$369



1/4-TURN ANGLE STOP VALVE WITH PORCELAIN INSERT CROSS HANDLE.

TBD503CQTX-2

1/2 in. Nom. Compression Inlet X 3/8 in. O.D. Compression Outlet
For 1/2 inch Copper Pipe
1/4-Turn Ceramic Disc Cartridge
Supplied with "PLAIN" Porcelain Insert
Temperature Rating: 40° - 140° F
Pressure Rating: 125 PSI Maximum
Lead Free Brass Construction

Group 1 - \$216
Group 2 - \$250
Group 3 - \$328
Group 4 - \$410



1/4-TURN ANGLE STOP VALVE WITH OVAL HANDLE.

TBD504CQT

1/2 in. Nom. Compression Inlet X 1/2 in. O.D. Compression Outlet
For 1/2 inch Copper Pipe
1/4-Turn Ceramic Disc Cartridge
Temperature Rating: 40° - 140° F
Pressure Rating: 125 PSI Maximum
Lead Free Brass Construction

Group 1 - \$197
Group 2 - \$215
Group 3 - \$263
Group 4 - \$329



1/4-TURN ANGLE STOP VALVE WITH LEVER HANDLE.

TBD504CQTL

1/2 in. Nom. Compression Inlet X 1/2 in. O.D. Compression Outlet
For 1/2 inch Copper Pipe
1/4-Turn Ceramic Disc Cartridge
Temperature Rating: 40° - 140° F
Pressure Rating: 125 PSI Maximum
Lead Free Brass Construction

Group 1 - \$225
Group 2 - \$249
Group 3 - \$292
Group 4 - \$365



1/4-TURN ANGLE STOP VALVE WITH CROSS HANDLE.

TBD504CQTX

1/2 in. Nom. Compression Inlet X 1/2 in. O.D. Compression Outlet
For 1/2 inch Copper Pipe
1/4-Turn Ceramic Disc Cartridge
Temperature Rating: 40° - 140° F
Pressure Rating: 125 PSI Maximum
Lead Free Brass Construction

Group 1 - \$225
Group 2 - \$249
Group 3 - \$292
Group 4 - \$365



1/4-TURN ANGLE STOP VALVE WITH PORCELAIN INSERT CROSS HANDLE.

TBD504CQTX-2

1/2 in. Nom. Compression Inlet X 1/2 in. O.D. Compression Outlet
For 1/2 inch Copper Pipe
1/4-Turn Ceramic Disc Cartridge
Supplied with "PLAIN" Porcelain Insert
Temperature Rating: 40° - 140° F
Pressure Rating: 125 PSI Maximum
Lead Free Brass Construction

Group 1 - \$250
Group 2 - \$277
Group 3 - \$325
Group 4 - \$406

Trim By Design


1/4-TURN STRAIGHT STOP VALVE WITH OVAL HANDLE.

1/2 in. Female Inlet X 3/8 in. O.D. Compression Outlet

1/4-Turn Ceramic Disc Cartridge

Temperature Rating: 40° - 140° F

Pressure Rating: 125 PSI Maximum

Lead Free Brass Construction

TBD510CQT
Group 1 - \$175
Group 2 - \$219
Group 3 - \$255
Group 4 - \$319

1/4-TURN STRAIGHT STOP VALVE WITH LEVER HANDLE.

1/2 in. Female Inlet X 3/8 in. O.D. Compression Outlet

1/4-Turn Ceramic Disc Cartridge

Temperature Rating: 40° - 140° F

Pressure Rating: 125 PSI Maximum

Lead Free Brass Construction

TBD510CQTL
Group 1 - \$199
Group 2 - \$249
Group 3 - \$279
Group 4 - \$349

1/4-TURN STRAIGHT STOP VALVE WITH CROSS HANDLE.

1/2 in. Female Inlet X 3/8 in. O.D. Compression Outlet

1/4-Turn Ceramic Disc Cartridge

Temperature Rating: 40° - 140° F

Pressure Rating: 125 PSI Maximum

Lead Free Brass Construction

TBD510CQTX
Group 1 - \$199
Group 2 - \$249
Group 3 - \$279
Group 4 - \$349

1/4-TURN STRAIGHT STOP VALVE WITH PORCELAIN INSERT CROSS HANDLE.

1/2 in. Female Inlet X 3/8 in. O.D. Compression Outlet

1/4-Turn Ceramic Disc Cartridge

Supplied with "PLAIN" Porcelain Insert

Temperature Rating: 40° - 140° F

Pressure Rating: 125 PSI Maximum

Lead Free Brass Construction

TBD510CQTX-2
Group 1 - \$221
Group 2 - \$277
Group 3 - \$310
Group 4 - \$388

1/4-TURN STRAIGHT STOP VALVE WITH OVAL HANDLE.

1/2 in. Nom. Compression Inlet X 3/8 in. O.D. Compression Outlet

For 1/2 inch Copper Pipe

1/4-Turn Ceramic Disc Cartridge

Temperature Rating: 40° - 140° F

Pressure Rating: 125 PSI Maximum

Lead Free Brass Construction

TBD512CQT
Group 1 - \$175
Group 2 - \$219
Group 3 - \$255
Group 4 - \$319

1/4-TURN STRAIGHT STOP VALVE WITH LEVER HANDLE.

1/2 in. Nom. Compression Inlet X 3/8 in. O.D. Compression Outlet

For 1/2 inch Copper Pipe

1/4-Turn Ceramic Disc Cartridge

Temperature Rating: 40° - 140° F

Pressure Rating: 125 PSI Maximum

Lead Free Brass Construction

TBD512CQTL
Group 1 - \$199
Group 2 - \$249
Group 3 - \$279
Group 4 - \$349

Trim By Design



1/4-TURN STRAIGHT STOP VALVE WITH CROSS HANDLE.

TBD512CQTX

1/2 in. Nom. Compression Inlet X 3/8 in. O.D. Compression Outlet
For 1/2 inch Copper Pipe
1/4-Turn Ceramic Disc Cartridge
Temperature Rating: 40° - 140° F
Pressure Rating: 125 PSI Maximum
Lead Free Brass Construction

Group 1 - \$199
Group 2 - \$249
Group 3 - \$279
Group 4 - \$349



1/4-TURN STRAIGHT STOP VALVE WITH PORCELAIN INSERT CROSS HANDLE.

TBD512CQTX-2

1/2 in. Nom. Compression Inlet X 3/8 in. O.D. Compression Outlet
For 1/2 inch Copper Pipe
1/4-Turn Ceramic Disc Cartridge
Supplied with "PLAIN" Porcelain Insert
Temperature Rating: 40° - 140° F
Pressure Rating: 125 PSI Maximum
Lead Free Brass Construction

Group 1 - \$221
Group 2 - \$277
Group 3 - \$310
Group 4 - \$387



MULTI-TURN ANGLE STOP VALVE WITH OVAL HANDLE.

TBD501C

1/2 in. Female Inlet X 3/8 in. O.D. Compression Outlet
Temperature Rating: 40° - 140° F
Pressure Rating: 125 PSI Maximum
Lead Free Brass Construction

Group 1 - \$128
Group 2 - \$159
Group 3 - \$190



MULTI-TURN ANGLE STOP VALVE WITH CROSS HANDLE.

TBD501CX

1/2 in. Female Inlet X 3/8 in. O.D. Compression Outlet
Temperature Rating: 40° - 140° F
Pressure Rating: 125 PSI Maximum
Lead Free Brass Construction

Group 1 - \$149
Group 2 - \$183
Group 3 - \$219



MULTI-TURN ANGLE STOP VALVE WITH OVAL HANDLE.

TBD502C

1/2 in. Female Inlet X 1/2 in. O.D. Compression Outlet
Temperature Rating: 40° - 140° F
Pressure Rating: 125 PSI Maximum
Lead Free Brass Construction

Group 1 - \$125
Group 2 - \$156
Group 3 - \$181



MULTI-TURN ANGLE STOP VALVE WITH CROSS HANDLE.

TBD502CX

1/2 in. Female Inlet X 1/2 in. O.D. Compression Outlet
Temperature Rating: 40° - 140° F
Pressure Rating: 125 PSI Maximum
Lead Free Brass Construction

Group 1 - \$141
Group 2 - \$175
Group 3 - \$199

Trim By Design


MULTI-TURN ANGLE STOP VALVE WITH OVAL HANDLE.
TBD503C

1/2 in. Nom. Compression Inlet X 3/8 in. O.D. Compression Outlet

For 1/2 inch Copper Pipe

Temperature Rating: 40° - 140° F

Pressure Rating: 125 PSI Maximum

Lead Free Brass Construction

Group 1 - \$128
Group 2 - \$159
Group 3 - \$190

MULTI-TURN ANGLE STOP VALVE WITH CROSS HANDLE.
TBD503CX

1/2 in. Nom. Compression Inlet X 3/8 in. O.D. Compression Outlet

For 1/2 inch Copper Pipe

Temperature Rating: 40° - 140° F

Pressure Rating: 125 PSI Maximum

Lead Free Brass Construction

Group 1 - \$149
Group 2 - \$183
Group 3 - \$219

MULTI-TURN ANGLE STOP VALVE WITH OVAL HANDLE.
TBD504C

1/2 in. Nom. Compression Inlet X 1/2 in. O.D. Compression Outlet

For 1/2 inch Copper Pipe

Temperature Rating: 40° - 140° F

Pressure Rating: 125 PSI Maximum

Lead Free Brass Construction

Group 1 - \$125
Group 2 - \$159
Group 3 - \$181

MULTI-TURN ANGLE STOP VALVE WITH CROSS HANDLE.
TBD504CX

1/2 in. Nom. Compression Inlet X 1/2 in. O.D. Compression Outlet

For 1/2 inch Copper Pipe

Temperature Rating: 40° - 140° F

Pressure Rating: 125 PSI Maximum

Lead Free Brass Construction

Group 1 - \$141
Group 2 - \$175
Group 3 - \$199

MULTI-TURN STRAIGHT STOP VALVE WITH OVAL HANDLE.
TBD510C

1/2 in. Female Inlet X 3/8 in. O.D. Compression Outlet

Temperature Rating: 40° - 140° F

Pressure Rating: 125 PSI Maximum

Lead Free Brass Construction

Group 1 - \$125
Group 2 - \$159
Group 3 - \$181

MULTI-TURN STRAIGHT STOP VALVE WITH CROSS HANDLE.
TBD510CX

1/2 in. Female Inlet X 3/8 in. O.D. Compression Outlet

Temperature Rating: 40° - 140° F

Pressure Rating: 125 PSI Maximum

Lead Free Brass Construction

Group 1 - \$141
Group 2 - \$175
Group 3 - \$199

Trim By Design



MULTI-TURN STRAIGHT STOP VALVE WITH OVAL HANDLE.

TBD511C

1/2 in. Female Inlet X 1/2 in. O.D. Compression Outlet

Temperature Rating: 40° - 140° F

Pressure Rating: 125 PSI Maximum

Lead Free Brass Construction

Group 1 - \$125

Group 2 - \$156

Group 3 - \$181



MULTI-TURN STRAIGHT STOP VALVE WITH CROSS HANDLE.

TBD511CX

1/2 in. Female Inlet X 1/2 in. O.D. Compression Outlet

Temperature Rating: 40° - 140° F

Pressure Rating: 125 PSI Maximum

Lead Free Brass Construction

Group 1 - \$149

Group 2 - \$169

Group 3 - \$199



MULTI-TURN STRAIGHT STOP VALVE WITH OVAL HANDLE.

TBD512C

1/2 in. Nom. Compression Inlet X 3/8 in. O.D. Compression Outlet

For 1/2 inch Copper Pipe

Temperature Rating: 40° - 140° F

Pressure Rating: 125 PSI Maximum

Lead Free Brass Construction

Group 1 - \$125

Group 2 - \$156

Group 3 - \$181



MULTI-TURN STRAIGHT STOP VALVE WITH CROSS HANDLE.

TBD512CX

1/2 in. Nom. Compression Inlet X 3/8 in. O.D. Compression Outlet

For 1/2 inch Copper Pipe

Temperature Rating: 40° - 140° F

Pressure Rating: 125 PSI Maximum

Lead Free Brass Construction

Group 1 - \$149

Group 2 - \$169

Group 3 - \$199



MULTI-TURN STRAIGHT STOP VALVE WITH OVAL HANDLE.

TBD513C

1/2 in. Nom. Compression Inlet X 1/2 in. O.D. Compression Outlet

For 1/2 inch Copper Pipe

Temperature Rating: 40° - 140° F

Pressure Rating: 125 PSI Maximum

Lead Free Brass Construction

Group 1 - \$125

Group 2 - \$156

Group 3 - \$181



MULTI-TURN STRAIGHT STOP VALVE WITH CROSS HANDLE.

TBD513CX

1/2 in. Nom. Compression Inlet X 1/2 in. O.D. Compression Outlet

For 1/2 inch Copper Pipe

Temperature Rating: 40° - 140° F

Pressure Rating: 125 PSI Maximum

Lead Free Brass Construction

Group 1 - \$149

Group 2 - \$169

Group 3 - \$199

Trim By Design



1/2 INCH FLAT PATTERN SURE GRIP FLANGE.

7/8 in. I.D. X 2-5/8 in. O.D. X 5/16 in. HT.

Solid Brass Construction

TBD200

Group 1 - \$19

Group 2 - \$27

Group 3 - \$32

Group 4 - \$40



5/8 INCH O.D. (1/2 INCH COMPRESSION) FLAT PATTERN SURE GRIP FLANGE.

5/8 in. I.D. X 2-5/8 in. O.D. X 5/16 in. HT.

Solid Brass Construction

TBD5002

Group 1 - \$19

Group 2 - \$27

Group 3 - \$32

Group 4 - \$40



1/2 INCH I.P.S. BELL FLANGE.

7/8 in. I.D. X 2-3/8 in. O.D. X 1-1/4 in. HT.

Solid Brass Construction

TBD5003

Group 1 - \$34

Group 2 - \$38

Group 3 - \$42

Group 4 - \$54



5/8 INCH O.D. (1/2 INCH COMPRESSION) BELL FLANGE.

5/8 in. I.D. X 2-3/8 in. O.D. X 1-1/4 in. HT.

Solid Brass Construction

TBD5005

Group 1 - \$34

Group 2 - \$38

Group 3 - \$42

Group 4 - \$54

Trim By Design



3/8 INCH O.D. X 20 INCH COPPER SEMI RIGID LAVATORY SUPPLY LINE.

Formed Metal Nosepiece with Brass Insert
Temperature Rating: 40° - 140° F
Pressure Rating: 125 PSI Maximum
Cut-to-Length for Professional Appearance

TBD521C **Group 1 -** \$35
 Group 2 - \$55
 Group 3 - \$75
 Group 4 - \$94



1/2 INCH O.D. X 20 INCH COPPER SEMI RIGID LAVATORY SUPPLY LINE.

Formed Metal Nosepiece with Brass Insert
Temperature Rating: 40° - 140° F
Pressure Rating: 125 PSI Maximum
Cut-to-Length for Professional Appearance

TBD523C **Group 1 -** \$73
 Group 2 - \$77
 Group 3 - \$80
 Group 4 - \$100



3/8 INCH O.D. X 20 INCH COPPER SEMI RIGID TOILET SUPPLY LINE.

Reinforced Flat Nosepiece with Insert
Temperature Rating: 40° - 140° F
Pressure Rating: 125 PSI Maximum
Cut-to-Length for Professional Appearance

TBD526 **Group 1 -** \$44
 Group 2 - \$61
 Group 3 - \$83
 Group 4 - \$104



1/2 INCH O.D. X 20 INCH COPPER SEMI RIGID TOILET SUPPLY LINE.

Reinforced Flat Nosepiece with Insert
Temperature Rating: 40° - 140° F
Pressure Rating: 125 PSI Maximum
Cut-to-Length for Professional Appearance

TBD528 **Group 1 -** \$89
 Group 2 - \$95
 Group 3 - \$105
 Group 4 - \$131

Trim By Design


COMPRESSION TOILET KIT WITH OVAL HANDLE.
TBD541QT

1/2 in. Nom. Compression Inlet X 3/8 in. O.D. Compression Outlet

For 1/2 inch Copper Pipe

1/4-Turn Angle Stop Valve with Oval Handle

20 inch Flat Head Toilet Riser and Flange

Includes (1) Each TBD503CQT, TBD526 and TBD5002

Group 1 - \$219
Group 2 - \$263
Group 3 - \$378
Group 4 - \$473

COMPRESSION TOILET KIT WITH LEVER HANDLE.
TBD541QTL

1/2 in. Nom. Compression Inlet X 3/8 in. O.D. Compression Outlet

For 1/2 inch Copper Pipe

1/4-Turn Angle Stop Valve with Lever Handle

20 inch Flat Head Toilet Riser and Flange

Includes (1) Each TBD503CQTL, TBD526 and TBD5002

Group 1 - \$239
Group 2 - \$299
Group 3 - \$410
Group 4 - \$513

COMPRESSION TOILET KIT WITH CROSS HANDLE.
TBD541QTX

1/2 in. Nom. Compression Inlet X 3/8 in. O.D. Compression Outlet

For 1/2 inch Copper Pipe

1/4-Turn Angle Stop Valve with Cross Handle

20 inch Flat Head Toilet Riser and Flange

Includes (1) Each TBD503CQTX, TBD526 and TBD5002

Group 1 - \$239
Group 2 - \$299
Group 3 - \$410
Group 4 - \$513

**COMPRESSION TOILET KIT WITH
PORCELAIN INSERT CROSS HANDLE.**
TBD541QTX-2

1/2 in. Nom. Compression Inlet X 3/8 in. O.D. Compression Outlet

For 1/2 inch Copper Pipe

1/4-Turn Angle Stop Valve with Porcelain Insert Cross Handle

20 inch Flat Head Toilet Riser and Flange

Supplied with "PLAIN" Porcelain Insert

Includes (1) Each TBD503CQTX-2, TBD526 and TBD5002

Group 1 - \$285
Group 2 - \$338
Group 3 - \$443
Group 4 - \$554

COMPRESSION TOILET KIT WITH OVAL HANDLE.
TBD543QT

1/2 in. Nom. Compression Inlet X 1/2 in. O.D. Compression Outlet

For 1/2 inch Copper Pipe

1/4-Turn Angle Stop Valve with Oval Handle

20 inch Flat Head Toilet Riser and Flange

Includes (1) Each TBD504CQT, TBD528 and TBD5002

Group 1 - \$311
Group 2 - \$337
Group 3 - \$399
Group 4 - \$499

COMPRESSION TOILET KIT WITH LEVER HANDLE.
TBD543QTL

1/2 in. Nom. Compression Inlet X 1/2 in. O.D. Compression Outlet

For 1/2 inch Copper Pipe

1/4-Turn Angle Stop Valve with Lever Handle

20 inch Flat Head Toilet Riser and Flange

Includes (1) Each TBD504CQTL, TBD528 and TBD5002

Group 1 - \$339
Group 2 - \$371
Group 3 - \$429
Group 4 - \$536

Trim By Design



COMPRESSION TOILET KIT WITH CROSS HANDLE.

TBD543QTX

Group 1 - \$339

1/2 in. Nom. Compression Inlet X 1/2 in. O.D. Compression Outlet

Group 2 - \$371

For 1/2 inch Copper Pipe

Group 3 - \$429

1/4-Turn Angle Stop Valve with Cross Handle

Group 4 - \$536

20 inch Flat Head Toilet Riser and Flange

Includes (1) Each TBD504CQTX, TBD528 and TBD5002



COMPRESSION TOILET KIT WITH

TBD543QTX-2

Group 1 - \$364

PORCELAIN INSERT CROSS HANDLE.

Group 2 - \$399

1/2 in. Nom. Compression Inlet X 1/2 in. O.D. Compression Outlet

Group 3 - \$462

For 1/2 inch Copper Pipe

Group 4 - \$577

1/4-Turn Angle Stop Valve with Porcelain Insert Cross Handle

20 inch Flat Head Toilet Riser and Flange

Supplied with "PLAIN" Porcelain Insert

Includes (1) Each TBD504CQTX-2, TBD526 and TBD5002



I.P.S. TOILET KIT WITH OVAL HANDLE.

TBD545QT

Group 1 - \$244

1/2 in. Female Inlet X 3/8 in. O.D. Compression Outlet

Group 2 - \$277

1/4-Turn Angle Stop Valve with Oval Handle

Group 3 - \$378

20 inch Flat Head Toilet Riser and Flange

Group 4 - \$473

Includes (1) Each TBD501CQT, TBD526 and TBD200



I.P.S. TOILET KIT WITH LEVER HANDLE.

TBD545QTL

Group 1 - \$263

1/2 in. Female Inlet X 3/8 in. O.D. Compression Outlet

Group 2 - \$313

1/4-Turn Angle Stop Valve with Lever Handle

Group 3 - \$410

20 inch Flat Head Toilet Riser and Flange

Group 4 - \$513

Includes (1) Each TBD501CQTL, TBD526 and TBD200



I.P.S. TOILET KIT WITH CROSS HANDLE.

TBD545QTX

Group 1 - \$263

1/2 in. Female Inlet X 3/8 in. O.D. Compression Outlet

Group 2 - \$313

1/4-Turn Angle Stop Valve with Cross Handle

Group 3 - \$410

20 inch Flat Head Toilet Riser and Flange

Group 4 - \$513

Includes (1) Each TBD501CQTX, TBD526 and TBD200



I.P.S. TOILET KIT WITH

TBD545QTX-2

Group 1 - \$285

PORCELAIN INSERT CROSS HANDLE.

Group 2 - \$338

1/2 in. Female Inlet X 3/8 in. O.D. Compression Outlet

Group 3 - \$443

1/4-Turn Angle Stop Valve with Porcelain Insert Cross Handle

Group 4 - \$554

20 inch Flat Head Toilet Riser and Flange

Supplied with "PLAIN" Porcelain Insert

Includes (1) Each TBD501CQTX-2, TBD526 and TBD5002

Trim By Design


COMPRESSION TOILET KIT WITH OVAL HANDLE.
TBD571QT
Group 1 - \$244

1/2 in. Nom. Compression Inlet X 3/8 in. O.D. Compression Outlet

Group 2 - \$307

For 1/2 inch Copper Pipe

Group 3 - \$370

1/4-Turn Straight Stop Valve with Oval Handle

Group 4 - \$463

20 inch Flat Head Toilet Riser and Flange

Includes (1) Each TBD512CQT, TBD526 and TBD5002


COMPRESSION TOILET KIT WITH LEVER HANDLE.
TBD571QTL
Group 1 - \$259

1/2 in. Nom. Compression Inlet X 3/8 in. O.D. Compression Outlet

Group 2 - \$337

For 1/2 inch Copper Pipe

Group 3 - \$394

1/4-Turn Straight Stop Valve with Lever Handle

Group 4 - \$493

20 inch Flat Head Toilet Riser and Flange

Includes (1) Each TBD512CQTL, TBD526 and TBD5002


COMPRESSION TOILET KIT WITH CROSS HANDLE.
TBD571QTX
Group 1 - \$259

1/2 in. Nom. Compression Inlet X 3/8 in. O.D. Compression Outlet

Group 2 - \$337

For 1/2 inch Copper Pipe

Group 3 - \$394

1/4-Turn Straight Stop Valve with Cross Handle

Group 4 - \$493

20 inch Flat Head Toilet Riser and Flange

Includes (1) Each TBD512CQTLX, TBD526 and TBD5002


**COMPRESSION TOILET KIT WITH
PORCELAIN INSERT CROSS HANDLE.**
TBD571QTX-2
Group 1 - \$290

1/2 in. Nom. Compression Inlet X 3/8 in. O.D. Compression Outlet

Group 2 - \$365

For 1/2 inch Copper Pipe

Group 3 - \$425

1/4-Turn Straight Stop Valve with Porcelain Insert Cross Handle

Group 4 - \$531

20 inch Flat Head Toilet Riser and Flange

Supplied with "PLAIN" Porcelain Insert

Includes (1) Each TBD512CQTX-2, TBD526 and TBD5002


COMPRESSION TOILET KIT WITH OVAL HANDLE.
TBD541
Group 1 - \$184

1/2 in. Nom. Compression Inlet X 3/8 in. O.D. Compression Outlet

Group 2 - \$238

For 1/2 inch Copper Pipe

Group 3 - \$305

Multi-Turn Angle Stop Valve with Oval Handle

20 inch Flat Head Toilet Riser and Flange

Includes (1) Each TBD503C, TBD526 and TBD5002


COMPRESSION TOILET KIT WITH CROSS HANDLE.
TBD541X
Group 1 - \$209

1/2 in. Nom. Compression Inlet X 3/8 in. O.D. Compression Outlet

Group 2 - \$271

For 1/2 inch Copper Pipe

Group 3 - \$334

Multi-Turn Angle Stop Valve with Cross Handle

20 inch Flat Head Toilet Riser and Flange

Includes (1) Each TBD503CX, TBD526 and TBD5002

Trim By Design



COMPRESSION TOILET KIT WITH OVAL HANDLE.

TBD543

Group 1 - \$239

1/2 in. Nom. Compression Inlet X 1/2 in. O.D. Compression Outlet

Group 2 - \$278

For 1/2 inch Copper Pipe

Group 3 - \$318

Multi-Turn Angle Stop Valve with Oval Handle

20 inch Flat Head Toilet Riser and Flange

Includes (1) Each TBD504C, TBD528 and TBD5002



COMPRESSION TOILET KIT WITH CROSS HANDLE.

TBD543X

Group 1 - \$255

1/2 in. Nom. Compression Inlet X 1/2 in. O.D. Compression Outlet

Group 2 - \$297

For 1/2 inch Copper Pipe

Group 3 - \$336

Multi-Turn Angle Stop Valve with Cross Handle

20 inch Flat Head Toilet Riser and Flange

Includes (1) Each TBD504CX, TBD528 and TBD5002



I.P.S. TOILET KIT WITH OVAL HANDLE.

TBD545

Group 1 - \$197

1/2 in. Female Inlet X 3/8 in. O.D. Compression Outlet

Group 2 - \$247

Multi-Turn Angle Stop Valve with Oval Handle

Group 3 - \$305

20 inch Flat Head Toilet Riser and Flange

Includes (1) Each TBD501C, TBD526 and TBD200



I.P.S. TOILET KIT WITH CROSS HANDLE.

TBD545X

Group 1 - \$218

1/2 in. Female Inlet X 3/8 in. O.D. Compression Outlet

Group 2 - \$271

Multi-Turn Angle Stop Valve with Cross Handle

Group 3 - \$334

20 inch Flat Head Toilet Riser and Flange

Includes (1) Each TBD501CX, TBD526 and TBD200



COMPRESSION TOILET KIT WITH OVAL HANDLE.

TBD571

Group 1 - \$179

1/2 in. Nom. Compression Inlet X 3/8 in. O.D. Compression Outlet

Group 2 - \$238

For 1/2 inch Copper Pipe

Group 3 - \$295

Multi-Turn Straight Stop Valve with Oval Handle

20 inch Flat Head Toilet Riser and Flange

Includes (1) Each TBD512C, TBD526 and TBD5002



COMPRESSION TOILET KIT WITH CROSS HANDLE.

TBD571X

Group 1 - \$218

1/2 in. Nom. Compression Inlet X 3/8 in. O.D. Compression Outlet

Group 2 - \$257

For 1/2 inch Copper Pipe

Group 3 - \$313

Multi-Turn Straight Stop Valve with Cross Handle

20 inch Flat head Toilet Riser and Flange

Includes (1) Each TBD512CX, TBD526 and TBD5002

Trim By Design



1-1/4 INCH X 1-1/2 INCH SINK KIT.

1/2 in. Female Inlet X 3/8 in. O.D. Compression Outlet
 1/4-Turn Angle Stop Valve with Oval Handle
 20 inch Semi Rigid Lavatory Risers, Flanges and P-Trap
 Includes (2) Each TBD501CQT, TBD521C, TBD200 and
 (1) Each TBD431

TBD425CQT **Group 1 - \$660**
Group 2 - \$789
Group 3 - \$1084
Group 4 - \$1356



1-1/4 INCH X 1-1/2 INCH SINK KIT.

1/2 in. Female Inlet X 3/8 in. O.D. Compression Outlet
 1/4-Turn Angle Stop Valve with Lever Handle
 20 inch Semi Rigid Lavatory Risers, Flanges and P-Trap
 Includes (2) Each TBD501CQTL, TBD521C, TBD200 and
 (1) Each TBD431

TBD425CQTL **Group 1 - \$690**
Group 2 - \$879
Group 3 - \$1148
Group 4 - \$1436



1-1/4 INCH X 1-1/2 INCH SINK KIT.

1/2 in. Female Inlet X 3/8 in. O.D. Compression Outlet
 1/4-Turn Angle Stop Valve with Cross Handle
 20 inch Semi Rigid Lavatory Risers, Flanges and P-Trap
 Includes (2) Each TBD501CQTX, TBD521C, TBD200 and
 (1) Each TBD431

TBD425CQTX **Group 1 - \$690**
Group 2 - \$879
Group 3 - \$1148
Group 4 - \$1436



1-1/4 INCH X 1-1/2 INCH SINK KIT.

1/2 in. Female Inlet X 3/8 in. O.D. Compression Outlet
 1/4-Turn Angle Stop Valve with Porcelain Insert Cross Handle
 20 inch Semi Rigid Lavatory Risers, Flanges and P-Trap
 Supplied with "HOT" and "COLD" Porcelain Inserts
 Includes (2) Each TBD501CQTX-2, TBD521C, TBD200 and
 (1) Each TBD431

TBD425CQTX-2 **Group 1 - \$752**
Group 2 - \$939
Group 3 - \$1214
Group 4 - \$1518



1-1/4 INCH X 1-1/2 INCH SINK KIT.

1/2 in. Nom. Compression Inlet X 3/8 in. O.D. Compression Outlet
 For 1/2 inch Copper Pipe
 1/4-Turn Angle Stop Valve with Oval Handle
 20 inch Semi Rigid Lavatory Risers, Flanges and P-Trap
 Includes (2) Each TBD503CQT, TBD521C, TBD5002 and
 (1) Each TBD431

TBD426CQT **Group 1 - \$620**
Group 2 - \$789
Group 3 - \$1084
Group 4 - \$1356

Trim By Design



1-1/4 INCH X 1-1/2 INCH SINK KIT.

TBD426CQTL

Group 1 - \$670

1/2 in. Nom. Compression Inlet X 3/8 in. O.D. Compression Outlet

Group 2 - \$879

For 1/2 inch Copper Pipe

Group 3 - \$1148

1/4-Turn Angle Stop Valve with Lever Handle

Group 4 - \$1436

20 inch Semi Rigid Lavatory Risers, Flanges and P-Trap

Includes (2) Each TBD503CQTL, TBD521C, TBD5002 and

(1) Each TBD431



1-1/4 INCH X 1-1/2 INCH SINK KIT.

TBD426CQTX

Group 1 - \$670

1/2 in. Nom. Compression Inlet X 3/8 in. O.D. Compression Outlet

Group 2 - \$879

For 1/2 inch Copper Pipe

Group 3 - \$1148

1/4-Turn Angle Stop Valve with Cross Handle

Group 4 - \$1436

20 inch Semi Rigid Lavatory Risers, Flanges and P-Trap

Includes (2) Each TBD503CQTX, TBD521C, TBD5002 and

(1) Each TBD431



1-1/4 INCH X 1-1/4 INCH SINK KIT.

TBD426CQTX-2

Group 1 - \$752

1/2 in. Nom. Compression Inlet X 3/8 in. O.D. Compression Outlet

Group 2 - \$939

For 1/2 inch Copper Pipe

Group 3 - \$1214

1/4-Turn Angle Stop Valve with Porcelain Insert Cross Handle

Group 4 - \$1518

20 inch Semi Rigid Lavatory Risers, Flanges and P-Trap

Supplied with "HOT" & "COLD" Porcelain Inserts

Includes (2) Each TBD503CQTX-2, TBD521C, TBD200 and

(1) Each TBD440



1-1/4 INCH X 1-1/4 INCH SINK KIT.

TBD427CQT

Group 1 - \$820

1/2 in. Nom. Compression Inlet X 3/8 in. O.D. Compression Outlet

Group 2 - \$944

For 1/2 inch Copper Pipe

Group 3 - \$1319

1/4-Turn Angle Stop Valve with Oval Handle

Group 4 - \$1651

20 inch Semi Rigid Lavatory Risers, Flanges and Cylinder Trap

Includes (2) Each TBD503CQT, TBD521C, TBD5002 and

(1) Each TBD440



1-1/4 INCH X 1-1/4 INCH SINK KIT.

TBD427CQTL

Group 1 - \$870

1/2 in. Nom. Compression Inlet X 3/8 in. O.D. Compression Outlet

Group 2 - \$1064

For 1/2 inch Copper Pipe

Group 3 - \$1383

1/4-Turn Angle Stop Valve with Lever Handle

Group 4 - \$1731

20 inch Semi Rigid Lavatory Risers, Flanges and Cylinder Trap

Includes (2) Each TBD503CQTL, TBD521C, TBD5002 and

(1) Each TBD440

Trim By Design



1-1/4 INCH X 1-1/4 INCH SINK KIT.

TBD427CQTX

1/2 in. Nom. Compression Inlet X 3/8 in. O.D. Compression Outlet

For 1/2 inch Copper Pipe

1/4-Turn Angle Stop Valve with Cross Handle

20 inch Semi Rigid Lavatory Risers, Flanges and Cylinder Trap

Includes (2) Each TBD503CQTX, TBD521C, TBD5002 and

(1) Each TBD440

Group 1 - \$870
Group 2 - \$1064
Group 3 - \$1383
Group 4 - \$1731


1-1/4 INCH X 1-1/4 INCH SINK KIT.

TBD427CQTX-2

1/2 in. Nom. Compression Inlet X 3/8 in. O.D. Compression Outlet

For 1/2 inch Copper Pipe

1/4-Turn Angle Stop Valve with Porcelain Insert Cross Handle

20 inch Semi Rigid Lavatory Risers, Flanges and P-Trap

Supplied with "HOT" & "COLD" Porcelain Inserts

Includes (2) Each TBD503CQTX-2, TBD521C, TBD200 and

(1) Each TBD440

Group 1 - \$952
Group 2 - \$1114
Group 3 - \$1447
Group 4 - \$1811


1-1/4 INCH X 1-1/2 INCH SINK KIT.

TBD425C

1/2 in. Female Inlet X 3/8 in. O.D. Compression Outlet

Multi-Turn Angle Stop Valve with Oval Handle

20 inch Semi Rigid Lavatory Risers, Flanges and P-Trap

Includes (2) Each TBD501C, TBD521C, TBD200 and

(1) Each TBD431

Group 1 - \$576
Group 2 - \$757
Group 3 - \$938


1-1/4 INCH X 1-1/2 INCH SINK KIT.

TBD425CX

1/2 in. Female Inlet X 3/8 in. O.D. Compression Outlet

Multi-Turn Angle Stop Valve with Cross Handle

20 inch Semi Rigid Lavatory Risers, Flanges and P-Trap

Includes (2) Each TBD501CX, TBD521C, TBD200 and

(1) Each TBD431

Group 1 - \$618
Group 2 - \$805
Group 3 - \$996


1-1/4 INCH X 1-1/2 INCH SINK KIT.

TBD426C

1/2 in. Nom. Compression Inlet X 3/8 in. O.D. Compression Outlet

For 1/2 inch Copper Pipe

Multi-Turn Angle Stop Valve with Oval Handle

20 inch Semi Rigid Lavatory Risers, Flanges and P-Trap

Includes (2) Each TBD503C, TBD521C, TBD5002 and

(1) Each TBD431

Group 1 - \$560
Group 2 - \$757
Group 3 - \$938

Trim By Design



1-1/4 INCH X 1-1/2 INCH SINK KIT.

TBD426CX

Group 1 - \$596

1/2 in. Nom. Compression Inlet X 3/8 in. O.D. Compression Outlet

Group 2 - \$789

For 1/2 inch Copper Pipe

Group 3 - \$996

Multi-Turn Angle Stop Valve with Cross Handle

20 inch Semi Rigid Lavatory Risers, Flanges and P-Trap

Includes (2) Each TBD503CX, TBD521C, TBD5002 and

(1) Each TBD431



COMPRESSION LAVATORY KIT WITH OVAL HANDLE.

TBD550CQT

Group 1 - \$420

1/2 in. Nom. Compression Inlet X 3/8 in. O.D. Compression Outlet

Group 2 - \$494

For 1/2 inch Copper Pipe

Group 3 - \$740

1/4-Turn Angle Stop Valve with Oval Handle

Group 4 - \$926

20 inch Semi Rigid Lavatory Riser and Flange

Includes (2) Each TBD503CQT, TBD521C and TBD5002



COMPRESSION LAVATORY KIT WITH LEVER HANDLE.

TBD550CQTL

Group 1 - \$460

1/2 in. Nom. Compression Inlet X 3/8 in. O.D. Compression Outlet

Group 2 - \$598

For 1/2 inch Copper Pipe

Group 3 - \$794

1/4-Turn Angle Stop Valve with Lever Handle

Group 4 - \$1006

20 inch Semi Rigid Lavatory Riser and Flange

Includes (2) Each TBD503CQTL, TBD521C and TBD5002



COMPRESSION LAVATORY KIT WITH CROSS HANDLE.

TBD550CQTX

Group 1 - \$460

1/2 in. Nom. Compression Inlet X 3/8 in. O.D. Compression Outlet

Group 2 - \$598

For 1/2 inch Copper Pipe

Group 3 - \$794

1/4-Turn Angle Stop Valve with Cross Handle

Group 4 - \$1006

20 inch Semi Rigid Lavatory Riser and Flange

Includes (2) Each TBD503CQTX, TBD521C and TBD5002



COMPRESSION LAVATORY KIT WITH PORCELAIN INSERT CROSS HANDLE.

TBD550CQTX-2

Group 1 - \$552

1/2 in. Nom. Compression Inlet X 3/8 in. O.D. Compression Outlet

Group 2 - \$664

For 1/2 inch Copper Pipe

Group 3 - \$870

1/4-Turn Angle Stop Valve with Porcelain Insert Cross Handle

Group 4 - \$1088

20 inch Semi Rigid Lavatory Risers, Flanges and P-Trap

Supplied with "HOT" & "COLD" Porcelain Inserts

Includes (2) Each TBD503CQTX-2, TBD521C and TBD5002

Trim By Design


I.P.S. LAVATORY KIT WITH OVAL HANDLE AND NIPPLE. TBD553CQT

1/2 in. Female Inlet X 3/8 in. O.D. Compression Outlet

1/4-Turn Angle Stop Valve with Oval Handle

20 inch Semi Rigid Lavatory Riser, 4 inch Nipple and Flange

Includes (2) Each TBD501CQT, TBD521C, TBD612C and TBD200

Group 1 - \$536

Group 2 - \$664

Group 3 - \$902

Group 4 - \$1124


I.P.S. LAVATORY KIT WITH LEVER HANDLE AND NIPPLE. TBD553CQTL

1/2 in. Female Inlet X 3/8 in. O.D. Compression Outlet

1/4-Turn Angle Stop Valve with Lever Handle

20 inch Semi Rigid Lavatory Riser, 4 inch Nipple and Flange

Includes (2) Each TBD501CQTL, TBD521C, TBD612C and TBD200

Group 1 - \$576

Group 2 - \$744

Group 3 - \$966

Group 4 - \$1204


I.P.S. LAVATORY KIT WITH CROSS HANDLE AND NIPPLE. TBD553CQTX

1/2 in. Female Inlet X 3/8 in. O.D. Compression Outlet

1/4-Turn Angle Stop Valve with Cross Handle

20 inch Semi Rigid Lavatory Riser, 4 inch Nipple and Flange

Includes (2) Each TBD501CQTX, TBD521C, TBD612C and TBD200

Group 1 - \$576

Group 2 - \$744

Group 3 - \$966

Group 4 - \$1204


I.P.S. LAVATORY KIT WITH
PORCELAIN INSERT CROSS HANDLE AND NIPPLE.

TBD553CQTX-2

1/2 in. Female Inlet X 3/8 in. O.D. Compression Outlet

1/4-Turn Angle Stop Valve with Cross Handle

20 inch Semi Rigid Lavatory Riser, 4 inch Nipple and Flange

Supplied with "HOT" & "COLD" Porcelain Inserts

Includes (2) Each TBD501CQTX-2, TBD521C, TBD612C and TBD200

Group 1 - \$638

Group 2 - \$804

Group 3 - \$1032

Group 4 - \$1286


COMPRESSION LAVATORY KIT WITH OVAL HANDLE.

TBD550C

1/2 in. Nom. Compression Inlet X 3/8 in. O.D. Compression Outlet

For 1/2 inch Copper Pipe

Multi-Turn Angle Stop Valve with Oval Handle

20 inch Semi Rigid Lavatory Riser and Flange

Includes (2) Each TBD503C, TBD521C and TBD5002

Group 1 - \$360

Group 2 - \$464

Group 3 - \$594

Trim By Design



COMPRESSION LAVATORY KIT WITH CROSS HANDLE. TBD550CX

1/2 in. Nom. Compression Inlet X 3/8 in. O.D. Compression Outlet

For 1/2 inch Copper Pipe

Multi-Turn Angle Stop Valve with Cross Handle

20 inch Semi Rigid Lavatory Riser and Flange

Includes (2) Each TBD503CX, TBD521C and TBD5002

Group 1 - \$390

Group 2 - \$514

Group 3 - \$652



I.P.S. LAVATORY KIT WITH OVAL HANDLE AND NIPPLE. TBD553C

1/2 in. Female Inlet X 3/8 in. O.D. Compression Outlet

Multi-Turn Angle Stop Valve with Oval Handle

20 inch Semi Rigid Lavatory Riser, 4 inch Nipple and Flange

Includes (2) Each TBD501C, TBD521C, TBD612C and TBD200

Group 1 - \$462

Group 2 - \$622

Group 3 - \$756



I.P.S. LAVATORY KIT WITH CROSS HANDLE AND NIPPLE. TBD553CX

1/2 in. Female Inlet X 3/8 in. O.D. Compression Outlet

Multi-Turn Angle Stop Valve with Cross Handle

20 inch Semi Rigid Lavatory Riser, 4 inch Nipple and Flange

Includes (2) Each TBD501CX, TBD521C, TBD612C and TBD200

Group 1 - \$496

Group 2 - \$670

Group 3 - \$814

Trim By Design



FRONT MOUNT STANDARD TOILET TANK LEVER.
Solid Brass Construction

TBD600
Group 1 - \$75
Group 2 - \$99
Group 3 - \$111
Group 4 - \$139



KOHLER TYPE TANK LEVER.
Fits Cimarron & Memoirs Toilets

TBD6011
Group 1 - \$35
Group 2 - \$49
Group 3 - \$58
Group 4 - \$73



TOTO TYPE TANK LEVER.
Fits Toto Ultramax, Carolina & Ultimax Toilets

TBD602
Group 1 - \$39
Group 2 - \$79
Group 3 - \$90
Group 4 - \$113



TOTO TYPE TANK LEVER.
Fits Toto Bristol, Drake & Vespini Toilets

TBD6021
Group 1 - \$39
Group 2 - \$79
Group 3 - \$90
Group 4 - \$113



SIDE MOUNT TANK LEVER.
Fits Toto Promenade, Dartmouth, Carrolton & Whitney Toilets
Solid Brass Construction

TBD6022
Group 1 - \$99
Group 2 - \$149
Group 3 - \$169
Group 4 - \$211



FRONT MOUNT TRADITIONAL TOILET TANK LEVER.
Solid Brass Construction

TBD603
Group 1 - \$99
Group 2 - \$149
Group 3 - \$169
Group 4 - \$211

Trim By Design



MULTI-FUNCTION TRADITIONAL TANK LEVER.
Front and/or Side Mount
Solid Brass Construction

TBD605
Group 1 - \$99
Group 2 - \$149
Group 3 - \$169
Group 4 - \$211



1/2 INCH X 4 INCH BRASS NIPPLE.
Lead Free Brass Construction

TBD612C
Group 1 - \$43
Group 2 - \$70
Group 3 - \$81
Group 4 - \$99



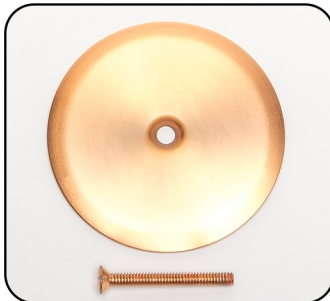
1/2 INCH X 6 INCH BRASS NIPPLE.
Lead Free Brass Construction

TBD613C
Group 1 - \$59
Group 2 - \$85
Group 3 - \$101
Group 4 - \$126



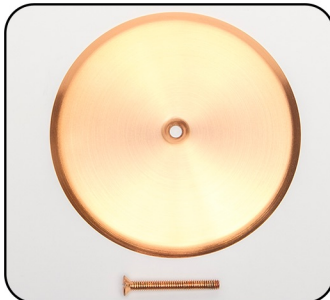
LOG LIGHTER FLANGE AND KEY.
3/4 inch Female Inlet Flange
5/16 in. x 3 in. Key
Solid Brass Construction

TBD700
Group 1 - \$99
Group 2 - \$119
Group 3 - \$149
Group 4 - \$186



4 INCH O.D. CLEANOUT COVER WITH SCREW.
1/4-20 X 2 in. Long Screw

TBD715
Group 1 - \$35
Group 2 - \$69
Group 3 - \$89



6 INCH O.D. CLEANOUT COVER WITH SCREW.
1/4-20 X 2 in. Long Screw

TBD716
Group 1 - \$45
Group 2 - \$85
Group 3 - \$125

Trim By Design



RECESSED TOILET PAPER HOLDER.

Spring Loaded Brass Roller
Includes Wall Mount Clamp
Solid Brass Construction

TBD805

Group 1 - \$225

Group 2 - \$249

Group 3 - \$299



1-HOLE OVAL REMODELING COVER PLATE.

5 inch Hole Opening
Includes Screws and Brackets

TBD824

Group 1 - \$139

Group 2 - \$259

Group 3 - POA



1-HOLE REMODELING COVER PLATE.

5 inch Hole Opening
Includes Screws and Brackets

TBD825

Group 1 - \$110

Group 2 - \$229

Group 3 - POA



10 INCH FAUCET DECK COVER PLATE.

10 inch Width X 2-1/2 inch Depth
Used to Cover 8 inch Faucet Holes
1-1/2 inch Opening
Solid Brass Construction

TBD830

Group 1 - \$125

Group 2 - \$139

Group 3 - \$166



6 INCH FAUCET DECK COVER PLATE.

6 inch Width X 2-7/16 inch Depth
Used to Cover 4 inch Faucet Holes
1-1/2 inch Opening
Solid Brass Construction

TBD832

Group 1 - \$89

Group 2 - \$99

Group 3 - \$116

Trim By Design

One-Year Functionality Warranty

Trim By Design, Inc. products are warranted to be free of defects in material and workmanship for one (1) year from date of purchase by the original purchaser. The warranty is not transferable and extended solely to the original purchaser of the product(s). Products must be installed in accordance with the Trim By Design installation instructions provided with the products.

You may call 323-722-4233 or email us at sales@trimbydesign.com for copies of the installation instructions.

Trim By Design will, at its option, either repair, credit or provide one-time product replacement with the same or similar current model of the product. If repair or replacement is not commercially practical or cannot be made in a timely manner, then Trim By Design will provide a credit for the product.

See Exclusions from Coverage below.

Drainage and Strainer Finish Limited Warranty

Polished Chrome (26) and PVD finishes for kitchen sink strainers, disposal flanges, disposal stoppers, bar strainers, basket strainers including bath and lavatory drains and components are warranted for one (1) year from the date that the product is received by the original purchaser or their authorized distributor.

Products must be installed in accordance with the Trim By Design installation instructions provided with the products.

All other finishes have no warranty.

Product Finish Limited Warranty

Trim By Design warrants all finishes to be free of defects in material and workmanship during normal residential usage to the "original purchaser" for ten (10) years from the date the product is received by the original purchaser.

Uncoated finishes such as Polished Brass Uncoated (03N), do naturally weather and change color over time are not warranted.

See Exclusions from Coverage below.

Commercial Warranty

Trim By Design warrants its products installed in an industrial, commercial application business use upon the same terms and conditions and exclusions applied to residential users to be free of defects in material, finishes (including PVD) and workmanship with the exception that warranty periods are reduced to one (1) year from date that the product is received by the original purchaser or their authorized distributor.

Maintenance and Product Care

Proper maintenance and care is required to preserve all finishes. Failure to properly maintain the product finish may void the product warranty. Abrasive material such as a brush, scouring pad or cleaning products that contain ammonia, bleach, detergents or alcohol on the product should not be used. Using brass or silver polish on products may result in damage to the finish and should not be used. Products may periodically be cleaned or waxed with non-abrasive compounds, such as Flitz or Faucet Brite.

Always test cleaning solution on an inconspicuous area before applying to the entire surface. For complete care requirements and recommendations, please visit our website at www.trimbydesign.com

See Exclusions from Coverage below.

Exclusions from Coverage

Trim By Design shall have no obligation under this warranty for leaks or damages caused by abuse, improper installation, temperatures below 41 degrees and above 140 degrees Fahrenheit, water pressure over 125 psi and Acts of Nature or Force Majeure. This Warranty does not cover labor charges, installation or other incidental or consequential cost or damages occurring during the removal, transportation, return or installation of Products or replacement Products. Products sold to distributors for display use are not meant for resale and are not covered under any functional or finish warranty.

Some states do not allow exclusion of limitations of incidental or consequential damages, so the above limitation may not apply to you.

TBD

TRIM BY DESIGN

DECORATIVE TRIM & ACCESSORIES
Catalog/Price List 2026

P.O. Box 227278
Los Angeles, Ca 90022
tel: (888) TBD-TRIM (823-8746)
fax: (877) 329-8746
sales@TrimByDesign.com
www.TrimByDesign.com

This catalog was designed and printed in the USA.

