

# TBD

TRIM BY DESIGN

DECORATIVE TRIM & ACCESSORIES

2026

Version 2.0

# METAL FINISHES



Code 01/03/03N  
Polished Brass - PVD  
Polished Brass  
Polished Brass  
Uncoated  
Price Group 2



Code 04  
Satin Brass  
Price Group 2



Code 06  
Antique Brass  
Price Group 3



Code 07  
Brushed Bronze  
Price Group 3



Code 08  
Polished Copper  
Price Group 3



Code 09  
Antique Copper  
Price Group 3



Code 10  
Aged Copper  
(Tumbled Copper)  
Price Group 3



Code 14  
Oil Rubbed Bronze  
Price Group 2



Code 15  
Polished Nickel  
Price Group 2



Code 16  
Pewter  
(Antique Nickel)  
Price Group 3



Code 17  
Brushed Nickel  
(Satin Nickel)  
Price Group 2



Code 20  
Stainless Steel  
Price Group 2



Code 21  
Black Stainless  
Price Group 4



Code 22  
Polished Gold -  
PVD  
Price Group 4



Code 23  
Satin Gold - PVD  
Price Group 4



Code 26  
Polished Chrome  
Price Group 1



Code 27  
Satin Chrome  
Price Group 2



Code 40+  
Sienna Bronze  
(Venetian Bronze)  
Price Group 3



Code 50  
White  
Price Group 2



Code 51  
Almond  
Price Group 2



Code 54  
Black  
(Gloss Black)  
Price Group 2



Code 56  
Matte Black  
(Flat Black)  
Price Group 2



Code 65  
Biscuit  
Price Group 2

\*\*Living or Uncoated finishes are not warranted and available on selected items

+Venetian Bronze is a Trademark of Delta Faucet Company

Actual product finish may vary from finishes shown in the catalog and website

\*Go to [www.trimbydesign.com](http://www.trimbydesign.com) for a current list of available finishes on each product



# FINISH DESCRIPTIONS

Code No.	Product Finishes	Price Group
26	Polished Chrome	1
01	Polished Brass - PVD	2
03	Polished Brass Coated	2
03N**	Polished Brass Uncoated	2
04	Satin Brass	2
14	Oil Rubbed Bronze	2
15	Polished Nickel	2
17	Brushed Nickel (Satin Nickel)	2
20	Stainless Steel	2
27	Satin Chrome	2
50	White	2
51	Almond	2
54	Black (Gloss Black)	2
56	Matte Black (Flat Black)	2
65	Biscuit	2
06	Antique Brass	3
07	Brushed Bronze	3
08	Polished Copper	3
09	Antique Copper	3
10	Aged Copper	3
16	Pewter (Antique Nickel)	3
40+	Sienna Bronze (Venetian Bronze)	3
21	Black Stainless	4
22	Polished Gold	4
23	Satin Gold	4

**\*\*Living or Uncoated finishes are not warranted and available on selected items**

**+Venetian Bronze is a Trademark of Delta Faucet Company**

**Actual product finished may vary from finishes shown in the catalog**

**\*Go to [www.trimbydesign.com](http://www.trimbydesign.com) for a current list available finishes on each product**

# Trim By Design

## TERMS AND CONDITIONS

**Minimum Order:** Minimums apply where stated or \$35.00 net per invoice.

**Order Placement:** All orders must be submitted via e-mail [sales@trimbydesign.com](mailto:sales@trimbydesign.com).

**Pricing:** All prices are listed in U.S. Currency. All prices, shipping, packaging or handling charges are subject to change without notice. All orders will be invoiced at prices prevailing at the time of the order. Publisher assumes no responsibility for typographical errors.

**Product Changes:** We reserve the right to discontinue, alter, modify, or redesign products and finishes without notice.

**Claims:** Upon delivery, if there is visible damage to the carton, claims against damaged and/or shortages must be made at the time of receipt against the carrier. Shortages, damaged merchandise, billing errors, etc., must be reported within 3 days of receipt of merchandise.

## FREIGHT

All orders will be shipped prepaid and bill. Shipments are F.O.B. Montebello, CA. Full freight is allowed on ground shipments of \$1,200.00 net value when shipped to the customer's place of business within the continental U.S.A. Trim By Design reserves the right to ship by method of our choosing.

## RETURN GOOD POLICY

All returns must be accompanied by a Trim By Design Return Goods Authorization number, issued by Trim By Design. Items returned without authorization will be disposed of without credit being issued.

- All return authorization requests must be made by e-mail [rga@trimbydesign.com](mailto:rga@trimbydesign.com) within 90 days of the original invoice date.
- Trim By Design does not even exchange or swap merchandise.
- Merchandise must be new and in saleable condition.
- All parts and / or components must be returned in order to accept returned merchandise.
- No returns on special orders or discontinued items.
- All returns must be made freight prepaid by sender and the sender must assume all responsibility for shipping. Trim By Design reserves the right to limit and / or refuse any returns at their discretion.

Trim By Design, Inc. shall not be held responsible for any liability associated with misprints, typographical errors or pricing discrepancies in this publication.

# Trim By Design

## TABLE OF CONTENTS

Terms & Conditions	C	Reverse Osmosis Air Gap	5
Warranty	80	Roman Tub Drain Top	41
Table of Contents	D	Shower Accessories	19
Air Gaps	1-2	Shower Arms	16-19
Bathtub Spouts	21-22	Shower Arms, Ceiling Mount	19
Bathtub Trim	23-25	Shower Heads	20
Bathtub Trim Kits	26-28	Shower Drain Trim	41-42
Bath Waste & Overflow (Brass )	29-32	Shower Drains	43
Bath Waste & Overflow (Plastic)	33-36	Sink Drain Accessories	51-54
Cable Operated Bath Waste	37-40	Sink Strainers, Bar Sink	10
Clean Out Covers	78	Sink Strainers, Kitchen	9-10
Faucet (Sink) Hole Cover	2	Sink / Lavatory Trim Kits*	71-74
Faucet Deck Plates	79	Sink P-Traps	55-56
Flanges, Shower Arm	15	Slip Joint Nuts	58
Flanges, Sink P-Trap	57-58	Bottle / Cylinder Trap	57
Flanges, Water Stops	65	Soap & Lotion Dispensers	6
Garbage Disposal Flange & Stoppers	7-8	Tank Levers	77-78
Garbage Disposal Air Switches	11-14	Tissue Holder	79
Lavatory Sink Drains	44-50	Toilet Supply Kits*	67-70
Lavatory Supply Kits*	74-76	Water Dispensers*	3-5
Log Lighter Trim	78	Water Stops, ¼ Turn*	59-62
Nipples, Brass	78	Water Stops, Compression*	62-64
Remodeling Plates	79	Water Supply Lines, Risers*	66

**\*Lead Free Products Comply with NSF/ANSI 61-Annex G Standards**

PHONE: 1-888-TBD-TRIM (823-8746)

FAX: 1-877-FAX-TRIM (329-8746)

E-MAIL: [sales@trimbydesign.com](mailto:sales@trimbydesign.com)

# Trim By Design



## AIR GAP COMPLETE.

Requires 1-1/4 inch to 1-1/2 inch Mounting Hole  
Air Gap Cap Covers Entire White Air Gap Body Base  
Durable Plastic Air Gap Body  
Solid Brass Cap (Cover) and Trim Ring  
IAPMO / UPC Listed

**TBD100**

**Group 1 - \$59**  
**Group 2 - \$69**  
**Group 3 - \$84**  
**Group 4 - \$105**



## TRADITIONAL AIR GAP COMPLETE.

Requires 1-1/4 inch to 1-1/2 inch Mounting Hole  
Air Gap Cap Covers Entire White Air Gap Body Base  
Durable Plastic Air Gap Body  
Solid Brass Cap (Cover) and Trim Ring  
IAPMO / UPC Listed

**TBD102**

**Group 1 - \$59**  
**Group 2 - \$69**  
**Group 3 - \$84**  
**Group 4 - \$105**



## CONTEMPORARY AIR GAP COMPLETE.

Requires 1-1/4 inch to 1-1/2 inch Mounting Hole  
Air Gap Cap Covers Entire White Air Gap Body Base  
Durable Plastic Air Gap Body  
Solid Brass Cap (Cover)  
IAPMO / UPC Listed

**TBD106**

**Group 1 - \$116**  
**Group 2 - \$127**  
**Group 3 - \$149**  
**Group 4 - \$186**



## DUAL AIR GAP COMPLETE.

Requires 1-1/2 inch Mounting Hole  
Air Gap Cap Covers Entire White Air Gap Body Base  
High Flow Plastic Air Gap Body Design  
Includes (1) Each Adapter for RO Port or  
2nd Dishwasher  
Solid Brass Cap (Cover)  
IAPMO / UPC Listed

**TBD108**

**Group 1 - \$239**  
**Group 2 - \$259**  
**Group 3 - \$309**  
**Group 4 - \$386**

# Trim By Design



## DUAL AIR GAP COMPLETE.

Requires 1-1/2 inch Mounting Hole  
Air Gap Cap Covers Entire White Air Gap Body Base  
High Flow Plastic Air Gap Body Design  
Includes (1) Each Adapter for RO Port or  
2nd Dishwasher  
Solid Brass Cap (Cover)  
IAPMO / UPC Listed

**TBD109**

**Group 1 - \$239**  
**Group 2 - \$259**  
**Group 3 - \$309**  
**Group 4 - \$386**



## AIR GAP CAP WITH TRIM RING.

Air Gap Cap Covers Entire White Air Gap Body Base  
Solid Brass Cap (Cover) and Trim Ring

**TBD101**

**Group 1 - \$56**  
**Group 2 - \$64**  
**Group 3 - \$79**  
**Group 4 - \$100**



## TRADITIONAL AIR GAP CAP WITH TRIM RING.

Air Gap Cap Covers Entire White Air Gap Body Base  
Solid Brass Cap (Cover) and Trim Ring

**TBD103**

**Group 1 - \$56**  
**Group 2 - \$64**  
**Group 3 - \$79**  
**Group 4 - \$100**



## 2 INCH SINK HOLE COVER.

2 inch Diameter  
2 inch Mounting Shank (Screw)  
Covers Unused Sink Hole  
Solid Brass Top

**TBD110**

**Group 1 - \$42**  
**Group 2 - \$49**  
**Group 3 - \$56**  
**Group 4 - \$70**



# Trim By Design

**WATER DISPENSER FAUCET  
WITH BRASS TIP AND HANDLE.**

Requires 1/2 inch to 1-1/2 inch Mounting Hole  
8-1/4 inch Height  
5 inch Spout Reach  
3-1/4 inch Stainless Steel Inlet Shank  
Color Matched Brass Tip and Handle  
Cold Water Inlet Only  
Lead Free Brass Construction

**TBD1201C**    **Group 1 - \$175**  
**Group 2 - \$199**  
**Group 3 - \$265**  
**Group 4 - \$331**

**WATER DISPENSER FAUCET  
WITH BRASS TIP AND HANDLE.**

Requires 1/2 inch to 1-1/2 inch Mounting Hole  
8-1/4 inch Height  
3 inch Spout Reach  
3-1/4 inch Stainless Steel Inlet Shank  
Color Matched Brass Tip and Handle  
Cold Water Inlet Only  
Lead Free Brass Construction

**TBD1203C**    **Group 1 - \$199**  
**Group 2 - \$222**  
**Group 3 - \$292**  
**Group 4 - \$365**

**DELUXE LEVER HANDLE  
WATER DISPENSER FAUCET.**

Requires 1/2 inch to 1-1/2 inch Mounting Hole  
11-1/4 inch Height  
4-1/2 inch Spout Reach  
3-1/4 inch Stainless Steel Inlet Shank  
1/4-Turn Ceramic Disc Cartridge  
Cold Water Inlet Only  
Lead Free Brass Construction

**TBD121C**    **Group 1 - \$299**  
**Group 2 - \$379**  
**Group 3 - \$444**  
**Group 4 - \$556**

**DELUXE LEVER HANDLE  
WATER DISPENSER FAUCET.**

Requires 1/2 inch to 1-1/2 inch Mounting Hole  
9-1/2 inch Height  
3-1/2 inch Spout Reach  
3-1/4 inch Stainless Steel Inlet Shank  
1/4-Turn Ceramic Disc Cartridge  
Cold Water Inlet Only  
Lead Free Brass Construction

**TBD1211C**    **Group 1 - \$299**  
**Group 2 - \$379**  
**Group 3 - \$444**  
**Group 4 - \$556**



# Trim By Design



## **DELUXE CROSS HANDLE WATER DISPENSER FAUCET.**

Requires 1/2 inch to 1-1/2 inch Mounting Hole  
11-1/4 inch Height  
4-1/2 inch Spout Reach  
3-1/4 inch Stainless Steel Inlet Shank  
1/4-Turn Ceramic Disc Cartridge  
Cold Water Inlet Only  
Lead Free Brass Construction

**TBD122C**

**Group 1 - \$299**  
**Group 2 - \$379**  
**Group 3 - \$444**  
**Group 4 - \$556**



## **DELUXE LEVER HANDLE WATER DISPENSER FAUCET.**

Requires 1/2 inch to 1-1/2 inch Mounting Hole  
11 inch Height  
5 inch Spout Reach  
3-1/4 inch Stainless Steel Inlet Shank  
1/4-Turn Ceramic Disc Cartridge  
Cold Water Inlet Only  
Lead Free Brass Construction

**TBD124C**

**Group 1 - \$299**  
**Group 2 - \$379**  
**Group 3 - \$444**  
**Group 4 - \$556**



## **CONTEMPORARY WATER DISPENSER FAUCET.**

Requires 1/2 inch to 1-1/2 inch Mounting Hole  
11 inch Height  
4-1/2 inch Spout Reach  
3-1/4 inch Stainless Steel Inlet Shank  
1/4-Turn Ceramic Disc Cartridge  
Cold Water Inlet Only  
Lead Free Brass Construction

**TBD123C**

**Group 1 - \$360**  
**Group 2 - \$425**  
**Group 3 - \$599**  
**Group 4 - \$749**



## **CONTEMPORARY WATER DISPENSER FAUCET.**

Requires 1/2 inch to 1-1/2 inch Mounting Hole  
8-1/4 inch Height  
3-1/2 inch Spout Reach  
3-1/4 inch Stainless Steel Inlet Shank  
1/4-Turn Ceramic Disc Cartridge  
Cold Water Inlet Only  
Lead Free Brass Construction

**TBD1231C**

**Group 1 - \$360**  
**Group 2 - \$425**  
**Group 3 - \$599**  
**Group 4 - \$749**

# Trim By Design



## TRADITIONAL WATER DISPENSER FAUCET WITH BRASS TIP AND HANDLE.

Requires 1/2 inch to 1-1/2 inch Mounting Hole  
8-1/4 inch Height  
5 inch Spout Reach  
3-1/4 inch Stainless Steel Inlet Shank  
Color Matched Brass Tip and Handle  
Cold Water Inlet Only  
Lead Free Brass Construction

**TBD1204C**    **Group 1** - \$199  
**Group 2** - \$222  
**Group 3** - \$292  
**Group 4** - \$365



## TRADITIONAL WATER DISPENSER FAUCET WITH BRASS TIP AND HANDLE.

Requires 1/2 inch to 1-1/2 inch Mounting Hole  
8-1/4 inch Height  
3 inch Spout Reach  
3-1/4 inch Stainless Steel Inlet Shank  
Color Matched Brass Tip and Handle  
Cold Water Inlet Only  
Lead Free Brass Construction

**TBD1202C**    **Group 1** - \$199  
**Group 2** - \$222  
**Group 3** - \$292  
**Group 4** - \$365



## WATER DISPENSER FAUCET.

Requires 1/2 inch to 1-1/2 inch Mounting Hole  
6-1/2 inch Height  
3 inch Spout Reach  
Cold Water Inlet Only  
Lead Free Brass Construction

**TBD120C**    **Group 1** - \$159  
**Group 2** - \$184  
**Group 3** - \$245

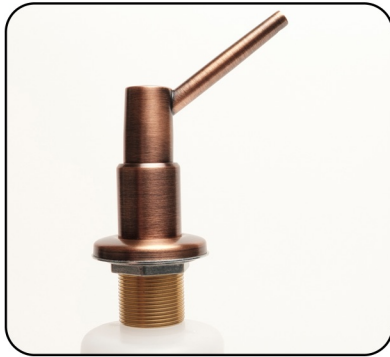


## REVERSE OSMOSIS AIR GAP.

Requires 1-1/4 inch Mounting Hole  
Includes 6 ft. of 3/8 in. and 1/4 in. Poly Tube  
Mounting Hardware  
For All Trim By Design Water Dispensers  
Solid Brass Construction

**TBD128**    **Group 1** - \$85  
**Group 2** - \$99  
**Group 3** - \$120  
**Group 4** - \$172

# Trim By Design



## SOAP AND LOTION DISPENSER.

Requires 1-1/4 inch to 1-1/2 inch Mounting Hole  
2-1/2 inch Spout Reach  
12.5 Ounce Bottle Capacity  
Refillable from Above Sink Deck  
Solid Brass Construction

**TBD130**

**Group 1** - \$116  
**Group 2** - \$126  
**Group 3** - \$144  
**Group 4** - \$180



## SOAP AND LOTION DISPENSER.

Requires 1-1/4 inch to 1-1/2 inch Mounting Hole  
3-3/4 inch Spout Reach  
12.5 Ounce Bottle Capacity  
Refillable from Above Sink Deck  
Solid Brass Construction

**TBD131**

**Group 1** - \$135  
**Group 2** - \$159  
**Group 3** - \$199  
**Group 4** - \$250



## SOAP AND LOTION DISPENSER.

Requires 1-1/4 inch to 1-1/2 inch Mounting Hole  
3-1/2 inch Spout Reach  
12.5 Ounce Bottle Capacity  
Refillable from Above Sink Deck  
Solid Brass Construction

**TBD132**

**Group 1** - \$105  
**Group 2** - \$119  
**Group 3** - \$139  
**Group 4** - \$185



## SOAP AND LOTION DISPENSER.

Requires 1-1/4 inch to 1-1/2 inch Mounting Hole  
3 inch Spout Reach  
12.5 Ounce Bottle Capacity  
Refillable from Above Sink Deck  
Solid Brass Construction

**TBD133**

**Group 1** - \$105  
**Group 2** - \$119  
**Group 3** - \$139  
**Group 4** - \$185



## SOAP AND LOTION DISPENSER.

Requires 1-1/4 inch to 1-1/2 inch Mounting Hole  
3-1/2 inch Spout Reach  
12.5 Ounce Bottle Capacity  
Refillable from Above Sink Deck  
Solid Brass Construction

**TBD135**

**Group 1** - \$135  
**Group 2** - \$159  
**Group 3** - \$199  
**Group 4** - \$250

# Trim By Design

**GARBAGE DISPOSAL STOPPER.**

Fits Model No. TBD140, TBD143, TBD144 and TBD145  
Solid Brass Construction

**TBD141**

**Group 1 -** \$59  
**Group 2 -** \$82  
**Group 3 -** \$95  
**Group 4 -** \$119

**GARBAGE DISPOSAL FLANGE.**

Fits Sinks with 3-1/2 inch Opening  
Fits All In-Sink-Erator Models, Including Evolution Series  
Solid Brass Construction

**TBD140**

**Group 1 -** \$99  
**Group 2 -** \$111  
**Group 3 -** \$132  
**Group 4 -** \$165

**GARBAGE DISPOSAL FLANGE AND STOPPER KIT.**

Fits Sinks with 3-1/2 inch Opening  
Fits All In-Sink-Erator Models, Including Evolution Series  
Solid Brass Construction

**TBD142**

**Group 1 -** \$158  
**Group 2 -** \$193  
**Group 3 -** \$227  
**Group 4 -** \$284

**GARBAGE DISPOSAL FLANGE AND STRAINER STOPPER KIT.**

Fits Sinks with 3-1/2 inch Opening  
Fits All In-Sink-Erator Models, Including Evolution Series  
Solid Brass Construction

**TBD1422**

**Group 1 -** \$158  
**Group 2 -** \$193  
**Group 3 -** \$227  
**Group 4 -** \$284

**EXTENDED GARBAGE DISPOSAL FLANGE.**

Fits Sinks with 3-1/2 inch Opening  
Fits All In-Sink-Erator Models, Including Evolution Series  
For use with Stone, Fireclay and Farmhouse Sinks  
Solid Brass Construction

**TBD143**

**Group 1 -** \$116  
**Group 2 -** \$128  
**Group 3 -** \$149  
**Group 4 -** \$193

**EXTENDED GARBAGE DISPOSAL FLANGE AND STOPPER KIT.**

Fits Sinks with 3-1/2 inch Opening  
Fits All In-Sink-Erator Models, Including Evolution Series  
For use with Stone, Fireclay and Farmhouse Sinks  
Solid Brass Construction

**TBD1431**

**Group 1 -** \$175  
**Group 2 -** \$210  
**Group 3 -** \$244  
**Group 4 -** \$312



# Trim By Design



## **EXTENDED GARBAGE DISPOSAL FLANGE AND STRAINER STOPPER KIT.**

Fits Sinks with 3-1/2 inch Opening  
Fits All In-Sink-Erator Models, Including Evolution Series  
For use with Stone, Fireclay and Farmhouse Sinks  
Solid Brass Construction

**TBD1432**

**Group 1 - \$175**  
**Group 2 - \$210**  
**Group 3 - \$244**  
**Group 4 - \$312**



## **GARBAGE DISPOSAL FLANGE AND STOPPER KIT.**

Fits Sinks with 3-1/2 inch Opening  
3-Bolt Mount Sink Flange for Waste King  
Solid Brass Construction

**TBD145**

**Group 1 - \$124**  
**Group 2 - \$166**  
**Group 3 - \$200**  
**Group 4 - \$250**



## **GARBAGE DISPOSAL FLANGE AND STRAINER STOPPER KIT.**

Fits Sinks with 3-1/2 inch Opening  
3-Bolt Mount Sink Flange for Waste King  
Solid Brass Construction

**TBD1452**

**Group 1 - \$124**  
**Group 2 - \$166**  
**Group 3 - \$200**  
**Group 4 - \$250**



## **EXTENDED GARBAGE DISPOSAL FLANGE.**

Fits Sinks with 3-1/2 inch Opening  
3-Bolt Mount Sink Flange for Waste King  
For use with Stone, Fireclay and Farmhouse Sinks  
Solid Brass Construction

**TBD144**

**Group 1 - \$99**  
**Group 2 - \$117**  
**Group 3 - \$139**  
**Group 4 - \$174**



## **EXTENDED GARBAGE DISPOSAL FLANGE AND STOPPER KIT.**

Fits Sinks with 3-1/2 inch Opening  
3-Bolt Mount Sink Flange for Waste King  
For use with Stone, Fireclay and Farmhouse Sinks  
Solid Brass Construction

**TBD1441**

**Group 1 - \$148**  
**Group 2 - \$184**  
**Group 3 - \$219**  
**Group 4 - \$275**



## **EXTENDED GARBAGE DISPOSAL FLANGE AND STRAINER STOPPER KIT.**

Fits Sinks with 3-1/2 inch Opening  
3-Bolt Mount Sink Flange for Waste King  
For use with Stone, Fireclay and Farmhouse Sinks  
Solid Brass Construction

**TBD1442**

**Group 1 - \$148**  
**Group 2 - \$184**  
**Group 3 - \$219**  
**Group 4 - \$275**

# Trim By Design



**WING NUT LOCKING STYLE  
KITCHEN STRAINER.**  
Fits Sinks with 3-1/2 inch Opening  
Brass Nuts  
Solid Brass Construction

**TBD155**  
**Group 1 - \$179**  
**Group 2 - \$199**  
**Group 3 - \$225**  
**Group 4 - \$281**



**WING NUT LOCKING STYLE  
KITCHEN STRAINER.**  
Fits Sinks with 3-1/2 inch Opening  
Sure Seal Mounting System  
Solid Brass Construction

**TBD155MK**  
**Group 1 - \$204**  
**Group 2 - \$224**  
**Group 3 - \$250**  
**Group 4 - \$306**



**POST STYLE KITCHEN STRAINER.**  
Fits Sinks with 3-1/2 inch Opening  
Brass Nuts  
Solid Brass Construction

**TBD160**  
**Group 1 - \$129**  
**Group 2 - \$168**  
**Group 3 - \$199**  
**Group 4 - \$253**



**POST STYLE KITCHEN STRAINER.**  
Fits Sinks with 3-1/2 inch Opening  
Sure Seal Mounting System  
Solid Brass Construction

**TBD160MK**  
**Group 1 - \$154**  
**Group 2 - \$193**  
**Group 3 - \$224**  
**Group 4 - \$278**



**POP-UP STYLE KITCHEN STRAINER.**  
Fits Sinks with 3-1/2 inch Opening  
Touch Seal Stopper  
Brass Cartridge Mechanism

**TBD166**  
**Group 1 - \$124**  
**Group 2 - \$153**  
**Group 3 - \$186**  
**Group 4 - \$234**



# Trim By Design



## POST STYLE KITCHEN STRAINER WITH SPRING LOADED CENTER POST.

Fits Sinks with 3-1/2 inch Opening  
ABS Outer Body  
Optional Part # TBD163EXTBOLT

**TBD163**

**Group 1 - \$115**  
**Group 2 - \$159**  
**Group 3 - \$205**  
**Group 4 - \$260**



## EXTENSION BOLT FOR TBD163 AND TBD172.

Extends Strainer Up To 2 inches (For Thick Sinks)

**TBD163EXTBOLT**

**\$25**



## BAR / PREP SINK BASKET STRAINER.

Fits Sinks with 2 inch Opening  
Drop-In Basket with Wire Handle to Lift and Replace  
Brass Nuts  
Solid Brass Construction

**TBD170**

**Group 1 - \$74**  
**Group 2 - \$116**  
**Group 3 - \$135**  
**Group 4 - \$169**



## JUNIOR DUO BASKET STRAINER.

Fits Sinks with 2 inch Opening  
Removable Post Style Basket  
Brass Nuts  
Solid Brass Construction

**TBD171**

**Group 1 - \$74**  
**Group 2 - \$116**  
**Group 3 - \$135**  
**Group 4 - \$169**



## BAR / PREP SINK STRAINER.

Fits Sinks with 2 inch Opening  
Features Spring Loaded Center Post for Positive Seal  
ABS Outer Body  
Allows Water to be Sealed in Sink  
Optional Part # TBD163EXTBOLT

**TBD172**

**Group 1 - \$72**  
**Group 2 - \$115**  
**Group 3 - \$140**  
**Group 4 - \$175**



**EASY TOUCH AIR ACTIVATED  
GARBAGE DISPOSAL KIT.**

Requires 1-1/4 inch to 1-3/8 inch Mounting Hole  
Brass Button and Flange Trim  
Single Outlet Power Module  
One (1) Switch Activated Outlet for Garbage Disposal  
Includes 1/4 in. X 5 ft. Vinyl Flexible Air Tube  
120 VAC U.L. Listed

**TBD151**      **Group 1 - \$158**  
**Group 2 - \$188**  
**Group 3 - \$240**  
**Group 4 - \$277**



**EASY TOUCH AIR ACTIVATED  
GARBAGE DISPOSAL KIT.**

Requires 1-1/4 inch to 1-3/8 inch Mounting Hole  
Brass Button and Flange Trim  
Dual Outlet Power Module  
One (1) Switch Activated Outlet for Garbage Disposal  
One (1) Unswitched Outlet for Hot Water Dispenser  
Includes 1/4 in. X 5 ft. Vinyl Flexible Air Tube  
120 VAC U.L. Listed

**TBD152**      **Group 1 - \$208**  
**Group 2 - \$238**  
**Group 3 - \$290**  
**Group 4 - \$327**



**EASY TOUCH AIR ACTIVATED  
GARBAGE DISPOSAL KIT.**

Requires 1-1/4 inch to 1-3/8 inch Mounting Hole  
Brass Button and Flange Trim  
Dual Outlet Power Module  
One (1) Switch Activated Outlet for Garbage Disposal  
One (1) Unswitched Outlet for Hot Water Dispenser  
Includes 1/4 in. X 5 ft. Vinyl Flexible Air Tube  
120 VAC U.L. Listed

**TBD153**      **Group 1 - \$299**  
**Group 2 - \$318**  
**Group 3 - \$338**  
**Group 4 - \$388**



**EASY TOUCH AIR ACTIVATED  
GARBAGE DISPOSAL KIT.**

Requires 1-1/4 inch to 1-3/8 inch Mounting Hole  
Brass Raised Button and Flange Trim  
Dual Outlet Power Module  
One (1) Switch Activated Outlet for Garbage Disposal  
One (1) Unswitched Outlet for Hot Water Dispenser  
Includes 1/4 in. X 5 ft. Vinyl Flexible Air Tube  
120 VAC U.L. Listed

**TBD152R**      **Group 1 - \$299**  
**Group 2 - \$318**  
**Group 3 - \$338**  
**Group 4 - \$388**



**EASY TOUCH AIR ACTIVATED  
GARBAGE DISPOSAL KIT.**

Requires 1-1/4 inch to 1-3/8 inch Mounting Hole  
Brass Button and Flange Trim  
Dual Outlet Power Module  
One (1) Switch Activated Outlet for Garbage Disposal  
One (1) Unswitched Outlet for Hot Water Dispenser  
Includes 1/4 in. X 5 ft. Vinyl Flexible Air Tube  
120 VAC U.L. Listed

**TBD154**      **Group 1 - \$299**  
**Group 2 - \$318**  
**Group 3 - \$338**  
**Group 4 - \$388**



**EASY TOUCH AIR ACTIVATED  
GARBAGE DISPOSAL KIT.**

Requires 1-1/4 inch to 1-3/8 inch Mounting Hole  
Brass Raised Button and Flange Trim  
Dual Outlet Power Module  
One (1) Switch Activated Outlet for Garbage Disposal  
One (1) Unswitched Outlet for Hot Water Dispenser  
Includes 1/4 in. X 5 ft. Vinyl Flexible Air Tube  
120 VAC U.L. Listed

**TBD154R**      **Group 1 - \$299**  
**Group 2 - \$318**  
**Group 3 - \$338**  
**Group 4 - \$388**



**SINGLE OUTLET GARBAGE DISPOSAL  
AIR SWITCH POWER MODULE.**

Works with Most Air Switch Buttons  
Single Outlet Power Module  
One (1) Switch Activated Outlet for Garbage Disposal  
Includes 1/4 in. X 5 ft. Vinyl Flexible Air Tube  
120 VAC U.L. Listed

**TBD151LT**      \$89



**DUAL OUTLET GARBAGE DISPOSAL  
AIR SWITCH POWER MODULE.**

Works with Most Air Switch Buttons  
Dual Outlet Power Module  
One (1) Switch Activated Outlet for Garbage Disposal  
One (1) Unswitched Outlet for Hot Water Dispenser  
Includes 1/4 in. X 5 ft. Vinyl Flexible Air Tube  
120 VAC U.L. Listed

**TBD152LT**      \$139



# Trim By Design

**EASY TOUCH AIR ACTIVATED  
REPLACEMENT SWITCH.**

Requires 1-1/4 inch to 1-3/8 inch Mounting Hole  
2 inch Transmitter Assembly  
Brass Button and Flange Trim  
Works with Most Air Switch Controllers

**TBD1521**    **Group 1 - \$69**  
**Group 2 - \$99**  
**Group 3 - \$151**  
**Group 4 - \$188**

**EASY TOUCH RAISED AIR ACTIVATED  
REPLACEMENT SWITCH.**

Requires 1-1/4 inch to 1-3/8 inch Mounting Hole  
2 inch Transmitter Assembly  
Brass Raised Button and Flange Trim  
Works with Most Air Switch Controllers

**TBD1522**    **Group 1 - \$162**  
**Group 2 - \$179**  
**Group 3 - \$199**  
**Group 4 - \$249**

**EASY TOUCH AIR ACTIVATED  
REPLACEMENT SWITCH.**

Requires 1-1/4 inch to 1-3/8 inch Mounting Hole  
2 inch Transmitter Assembly  
Brass Button and Flange Trim  
Works with Most Air Switch Controllers

**TBD1531**    **Group 1 - \$162**  
**Group 2 - \$179**  
**Group 3 - \$199**  
**Group 4 - \$249**

**EASY TOUCH AIR ACTIVATED  
REPLACEMENT SWITCH.**

Requires 1-1/4 inch to 1-3/8 inch Mounting Hole  
2 inch Transmitter Assembly  
Brass Button and Flange Trim  
Works with Most Air Switch Controllers

**TBD1541**    **Group 1 - \$162**  
**Group 2 - \$179**  
**Group 3 - \$199**  
**Group 4 - \$249**

**EASY TOUCH RAISED AIR ACTIVATED  
REPLACEMENT SWITCH.**

Requires 1-1/4 inch to 1-3/8 inch Mounting Hole  
2 inch Transmitter Assembly  
Brass Raised Button and Flange Trim  
Works with Most Air Switch Controllers

**TBD1542**    **Group 1 - \$162**  
**Group 2 - \$179**  
**Group 3 - \$199**  
**Group 4 - \$249**

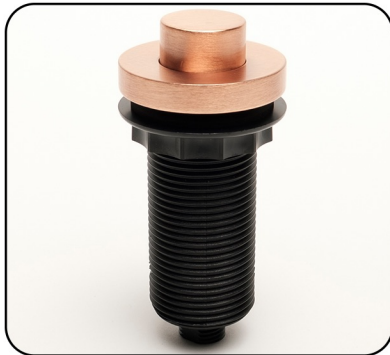
# Trim By Design



## **EASY TOUCH AIR ACTIVATED REPLACEMENT SWITCH.**

Requires 1-1/4 inch to 1-3/8 inch Mounting Hole  
3 inch Transmitter Assembly  
Brass Button and Flange Trim  
Works with Most Air Switch Controllers

**TBD1521L**    **Group 1 - \$79**  
**Group 2 - \$109**  
**Group 3 - \$161**  
**Group 4 - \$198**



## **EASY TOUCH RAISED AIR ACTIVATED REPLACEMENT SWITCH.**

Requires 1-1/4 inch to 1-3/8 inch Mounting Hole  
3 inch Transmitter Assembly  
Brass Raised Button and Flange Trim  
Works with Most Air Switch Controllers

**TBD1522L**    **Group 1 - \$172**  
**Group 2 - \$189**  
**Group 3 - \$209**  
**Group 4 - \$259**



## **EASY TOUCH AIR ACTIVATED REPLACEMENT SWITCH.**

Requires 1-1/4 inch to 1-3/8 inch Mounting Hole  
3 inch Transmitter Assembly  
Brass Button and Flange Trim  
Works with Most Air Switch Controllers

**TBD1531L**    **Group 1 - \$172**  
**Group 2 - \$189**  
**Group 3 - \$209**  
**Group 4 - \$259**



## **EASY TOUCH AIR ACTIVATED REPLACEMENT SWITCH.**

Requires 1-1/4 inch to 1-3/8 inch Mounting Hole  
3 inch Transmitter Assembly  
Brass Button and Flange Trim  
Works with Most Air Switch Controllers

**TBD1541L**    **Group 1 - \$172**  
**Group 2 - \$189**  
**Group 3 - \$209**  
**Group 4 - \$259**



## **EASY TOUCH RAISED AIR ACTIVATED REPLACEMENT SWITCH.**

Requires 1-1/4 inch to 1-3/8 inch Mounting Hole  
3 inch Transmitter Assembly  
Brass Raised Button and Flange Trim  
Works with Most Air Switch Controllers

**TBD1542L**    **Group 1 - \$172**  
**Group 2 - \$189**  
**Group 3 - \$209**  
**Group 4 - \$259**

# Trim By Design



## 1/2 INCH FLAT PATTERN SURE GRIP FLANGE.

7/8 in. I.D. X 2-5/8 in. O.D. X 5/16 in. HT.

Solid Brass Construction

**TBD200**

**Group 1 - \$19**

**Group 2 - \$27**

**Group 3 - \$32**

**Group 4 - \$40**



## 1/2 INCH SHOWER ARM FLANGE.

13/16 in. I.D. X 2-3/8 in. O.D. X 1/4 in. HT.

Held In Position By O-Ring

Solid Brass Construction

**TBD2011**

**Group 1 - \$49**

**Group 2 - \$58**

**Group 3 - \$72**

**Group 4 - \$90**



## 1/2 INCH SHOWER ARM FLANGE.

13/16 in. I.D. X 2-3/16 in. O.D. X 11/16 in. HT.

Held In Position By Set Screw

Solid Brass Construction

**TBD202**

**Group 1 - \$49**

**Group 2 - \$58**

**Group 3 - \$72**

**Group 4 - \$90**



## 1/2 INCH SHOWER ARM FLANGE.

13/16 in. I.D. X 2-3/16 in. O.D. X 3/8 in. HT.

Held In Position By O-Ring

Solid Brass Construction

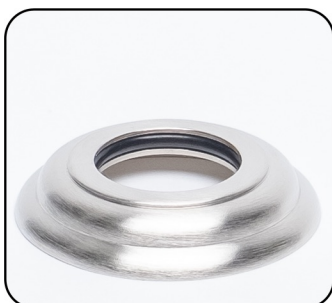
**TBD203**

**Group 1 - \$49**

**Group 2 - \$58**

**Group 3 - \$72**

**Group 4 - \$90**



## 3/4 INCH SHOWER ARM FLANGE.

1 in. I.D. X 2-3/16 in. O.D. X 3/8 in. HT.

Held in Position By O-Ring

Solid Brass Construction

**TBD204**

**Group 1 - \$49**

**Group 2 - \$58**

**Group 3 - \$72**

**Group 4 - \$90**



## 1/2 INCH SQUARE SHOWER ARM FLANGE.

13/16 in. I.D. X 2-1/16 in. O.D. X 9/32 in. HT.

Held In Position By O-Ring

Solid Brass Construction

**TBD2020**

**Group 1 - \$65**

**Group 2 - \$69**

**Group 3 - \$72**

**Group 4 - \$90**



# Trim By Design

## SHOWER ARMS



**6 INCH SHOWER ARM EXTENDER.**  
1/2 in. Female Nut X 1/2 in. Male Nipple  
Solid Brass Construction

**TBD208**

**Group 1 - \$59**  
**Group 2 - \$99**  
**Group 3 - \$125**



**6 INCH SHOWER ARM.**  
1/2 inch Male Thread Connections  
Solid Brass Construction

**TBD210**

**Group 1 - \$47**  
**Group 2 - \$75**  
**Group 3 - \$89**  
**Group 4 - \$114**



**6 INCH SHOWER ARM AND FLANGE.**  
1/2 inch Male Thread Connections  
Solid Brass Construction

**TBD2101**

**Group 1 - \$66**  
**Group 2 - \$102**  
**Group 3 - \$121**  
**Group 4 - \$154**



**8 INCH SHOWER ARM.**  
1/2 inch Male Thread Connections  
Solid Brass Construction

**TBD211**

**Group 1 - \$53**  
**Group 2 - \$95**  
**Group 3 - \$112**  
**Group 4 - \$140**



**8 INCH SHOWER ARM AND FLANGE.**  
1/2 inch Male Thread Connections  
Solid Brass Construction

**TBD2111**

**Group 1 - \$72**  
**Group 2 - \$122**  
**Group 3 - \$144**  
**Group 4 - \$180**

# Trim By Design

**10 INCH SHOWER ARM.**

1/2 inch Male Thread Connections  
Solid Brass Construction

**TBD212**

**Group 1 - \$79**  
**Group 2 - \$111**  
**Group 3 - \$135**  
**Group 4 - \$169**

**10 INCH SHOWER ARM AND FLANGE.**

1/2 inch Male Thread Connections  
Solid Brass Construction

**TBD2121**

**Group 1 - \$98**  
**Group 2 - \$138**  
**Group 3 - \$167**  
**Group 4 - \$209**

**12 INCH SHOWER ARM.**

1/2 inch Male Thread Connections  
Solid Brass Construction

**TBD214**

**Group 1 - \$135**  
**Group 2 - \$155**  
**Group 3 - \$171**  
**Group 4 - \$214**

**12 INCH SHOWER ARM AND FLANGE.**

1/2 inch Male Thread Connections  
Solid Brass Construction

**TBD2141**

**Group 1 - \$154**  
**Group 2 - \$182**  
**Group 3 - \$203**  
**Group 4 - \$254**

**18 INCH SHOWER ARM  
CEILING / WALL SUPPORT.**

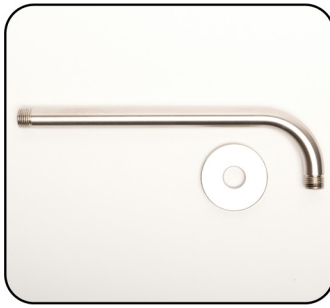
18 inch Rod Can be Cut to Length  
Swivels for Easy Adjustment  
Provides Added Stability  
Solid Brass Construction

**TBD219**

**Group 1 - \$155**  
**Group 2 - \$263**  
**Group 3 - \$299**

# Trim By Design

## SHOWER ARMS



### 12 INCH RIGHT ANGLE SHOWER ARM AND FLANGE.

1/2 inch Male Thread Connections  
2 inch Arm Drop  
Solid Brass Construction

**TBD216**

**Group 1** - \$138  
**Group 2** - \$176  
**Group 3** - \$221  
**Group 4** - \$276

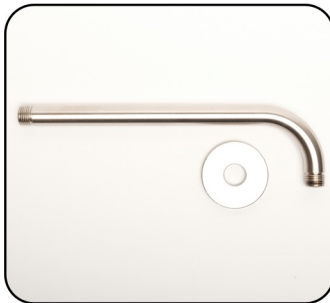


### 12 INCH RIGHT ANGLE SHOWER ARM.

1/2 inch Male Thread Connections  
2 inch Arm Drop  
Solid Brass Construction

**TBD2161**

**Group 1** - \$119  
**Group 2** - \$149  
**Group 3** - \$189  
**Group 4** - \$236



### 18 INCH RIGHT ANGLE SHOWER ARM AND FLANGE.

1/2 inch Male Thread Connections  
2 inch Arm Drop  
Solid Brass Construction

**TBD217**

**Group 1** - \$164  
**Group 2** - \$209  
**Group 3** - \$251  
**Group 4** - \$319



### 18 INCH RIGHT ANGLE SHOWER ARM.

1/2 inch Male Thread Connections  
2 inch Arm Drop  
Solid Brass Construction

**TBD2171**

**Group 1** - \$145  
**Group 2** - \$182  
**Group 3** - \$219  
**Group 4** - \$279



### 24 INCH RIGHT ANGLE SHOWER ARM AND FLANGE.

1/2 inch Male Thread Connections  
2 inch Arm Drop  
Solid Brass Construction

**TBD218**

**Group 1** - \$181  
**Group 2** - \$276  
**Group 3** - \$301  
**Group 4** - \$376



### 24 INCH RIGHT ANGLE SHOWER ARM.

1/2 inch Male Thread Connections  
2 inch Arm Drop  
Solid Brass Construction

**TBD2181**

**Group 1** - \$162  
**Group 2** - \$249  
**Group 3** - \$269  
**Group 4** - \$336

# Trim By Design


**S-STYLE SHOWER ARM.**

1/2 inch Male Thread Connections  
Raises Showerhead 10 inches  
Solid Brass Construction

**TBD220**

**Group 1 - \$125**  
**Group 2 - \$159**  
**Group 3 - \$220**  
**Group 4 - \$275**


**S-STYLE SHOWER ARM AND FLANGE.**

1/2 inch Male Thread Connections  
Raises Showerhead 10 inches  
Solid Brass Construction

**TBD2201**

**Group 1 - \$144**  
**Group 2 - \$186**  
**Group 3 - \$252**  
**Group 4 - \$315**


**1/2 INCH I.P.S. X 12 INCH CEILING MOUNT SHOWER ARM AND FLANGE.**

1/2 inch Male Thread Connections  
Solid Brass Construction

**TBD230**

**Group 1 - \$197**  
**Group 2 - \$234**  
**Group 3 - \$277**  
**Group 4 - \$346**


**45 DEGREE SHOWER ELBOW.**

1/2 in. Female Inlet X 1/2 in. Male Outlet  
Solid Brass Construction

**TBD232**

**Group 1 - \$49**  
**Group 2 - \$85**  
**Group 3 - \$99**  
**Group 4 - \$123**


**SHOWER VOLUME CONTROL.**

1/2 in. Female Inlet X 1/2 in. Male Outlet  
Fits Between Shower Head and Shower Arm  
Solid Brass Construction  
Not a Positive Shut-Off

**TBD233**

**Group 1 - \$49**  
**Group 2 - \$85**  
**Group 3 - \$99**  
**Group 4 - \$123**

# Trim By Design

## SHOWER HEADS



### **6 JET SHOWER HEAD.**

Multi-Function Shower Head

2-3/4 inch Face

1/2 inch Female Inlet

1.75 GPM Complies with ASME A112.18.1

Solid Brass Construction

**TBD235**

**Group 1 - \$239**

**Group 2 - \$299**

**Group 3 - \$389**

**Group 4 - \$486**



### **8 JET SHOWER HEAD.**

Multi-Function Shower Head

3-1/2 inch Face

1/2 inch Female Inlet

1.75 GPM Complies with ASME A112.18.1

Solid Brass Construction

**TBD236**

**Group 1 - \$439**

**Group 2 - \$499**

**Group 3 - \$659**

**Group 4 - \$824**



# Trim By Design



**5 INCH TUB SPOUT AND  
DECORATIVE TRIM RING.**  
5 inch Overall Length  
Threads onto a 1/2 inch I.P.S. Nipple  
Front End Threaded Connection  
Solid Brass Construction

**TBD255**      **Group 1 - \$153**  
**Group 2 - \$185**  
**Group 3 - \$249**  
**Group 4 - \$311**



**7-1/4 INCH TUB SPOUT AND  
DECORATIVE TRIM RING.**  
7-1/4 inch Overall Length  
Threads onto a 1/2 inch I.P.S. Nipple  
Front End Threaded Connection  
Premium Metal Construction

**TBD256**      **Group 1 - \$75**  
**Group 2 - \$135**



**7-1/4 INCH TUB SPOUT AND  
DECORATIVE TRIM RING.**  
7-1/4 inch Overall Length  
Slips onto a 1/2 inch Copper Pipe  
Rear End Connection  
Premium Metal Construction

**TBD257**      **Group 1 - \$93**  
**Group 2 - \$153**



**5-1/2 INCH DIVERTER TUB SPOUT AND  
DECORATIVE TRIM RING.**  
5-1/2 inch Overall Length  
Threads onto a 1/2 inch I.P.S. Nipple  
Front End Threaded Connection  
Solid Brass Construction

**TBD260**      **Group 1 - \$175**  
**Group 2 - \$199**  
**Group 3 - \$326**  
**Group 4 - \$408**



**5-1/2 INCH DIVERTER TUB SPOUT AND  
DECORATIVE TRIM RING.**  
5-1/2 inch Overall Length  
Threads onto a 1/2 inch I.P.S. Nipple  
Front End Threaded Connection  
Premium Metal Construction

**TBD260Z**      **Group 1 - \$59**  
**Group 2 - \$119**



# Trim By Design



## 5-1/2 INCH DIVERTER TUB SPOUT AND DECORATIVE TRIM RING.

5-1/2 inch Overall Length  
Slips onto a 1/2 inch Copper Pipe  
Rear End Connection  
Solid Brass Construction

TBD261

Group 1 - \$183  
Group 2 - \$216  
Group 3 - \$373  
Group 4 - \$461



## 5-1/2 INCH DIVERTER TUB SPOUT AND DECORATIVE TRIM RING.

5-1/2 inch Overall Length  
Slips onto a 1/2 inch Copper Pipe  
Rear End Connection  
Premium Metal Construction

TBD261Z

Group 1 - \$77  
Group 2 - \$128



## 7-1/4 INCH DIVERTER TUB SPOUT AND DECORATIVE TRIM RING.

7-1/4 inch Overall Length  
Threads onto a 1/2 inch I.P.S. Nipple  
Front End Threaded Connection  
Premium Metal Construction

TBD263

Group 1 - \$118  
Group 2 - \$179



## 7-1/4 INCH DIVERTER TUB SPOUT AND DECORATIVE TRIM RING.

7-1/4 inch Overall Length  
Slips onto a 1/2 inch Copper Pipe  
Rear End Connection  
Premium Metal Construction

TBD264

Group 1 - \$138  
Group 2 - \$199

# Trim By Design



## 1-HOLE FACEPLATE AND SCREW.

3 inch Diameter

One (1) 1/4-20 X 2 inch Long Brass Screw

Solid Brass Construction

**TBD300**

**Group 1 - \$59**

**Group 2 - \$70**

**Group 3 - \$81**

**Group 4 - \$101**



## 2-HOLE FACEPLATE AND SCREWS.

3 inch Diameter

Two (2) 1/4-20 X 2 inch Long Brass Screws

Solid Brass Construction

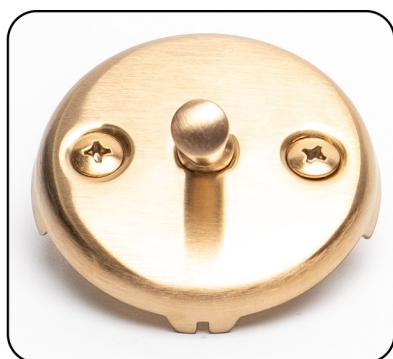
**TBD301**

**Group 1 - \$65**

**Group 2 - \$76**

**Group 3 - \$86**

**Group 4 - \$108**



## TRIP LEVER FACEPLATE AND SCREWS.

For Trip Lever Bathtub Drains

3 inch Diameter

Two (2) 1/4-20 X 2 inch Long Brass Screws

Solid Brass Construction

**TBD302**

**Group 1 - \$79**

**Group 2 - \$89**

**Group 3 - \$119**

**Group 4 - \$149**



## DAISY STYLE FACEPLATE AND SCREW.

3 inch Diameter

One (1) 1/4-20 X 2 inch Long Brass Screw

Solid Brass Construction

**TBD303**

**Group 1 - \$59**

**Group 2 - \$70**

**Group 3 - \$81**

**Group 4 - \$101**



## DOME STRAINER COVER AND SCREW.

2-7/8 inch Diameter Cover

For Trip Lever Bath Drains

Solid Brass Construction

**TBD305**

**Group 1 - \$39**

**Group 2 - \$49**

**Group 3 - \$69**

**Group 4 - \$86**

# Trim By Design

## BATHTUB TRIM



### 1-1/2 INCH COARSE THREAD DOME STRAINER BATHTUB DRAIN PLUG.

1-1/2 inch Coarse Thread Bathtub Drain Plug  
2-7/8 inch Diameter Cover  
For Trip Lever Bath Drains  
Solid Brass Construction

TBD306

Group 1 - \$68  
Group 2 - \$78  
Group 3 - \$98  
Group 4 - \$115



### 1-1/2 INCH COARSE THREAD LIFT & TURN BATHTUB DRAIN PLUG.

1-1/2 inch Coarse Thread Lift & Turn Bathtub Drain Plug  
Solid Brass Construction

TBD307

Group 1 - \$86  
Group 2 - \$95  
Group 3 - \$113  
Group 4 - \$141



### 1-1/2 INCH COARSE THREAD TOE OPERATED BATHTUB DRAIN PLUG.

1-1/2 inch Coarse Thread Toe Operated Bathtub Drain Plug  
Solid Brass Stopper (Cap)  
Solid Brass Construction

TBD308

Group 1 - \$92  
Group 2 - \$104  
Group 3 - \$129  
Group 4 - \$161



### 1-1/4 INCH FINE THREAD TOE OPERATED BATHTUB DRAIN PLUG.

1-1/4 inch Fine Thread Toe Operated Bathtub Drain Plug  
Solid Brass Flush Stopper  
Includes: 1-1/2 in. Coarse Thread X  
1-1/4 in. Fine Thread Brass Bushing  
Fits 1-1/4 in and 1-1/2 in Drain Opening  
Solid Brass Construction

TBD3008

Group 1 - \$92  
Group 2 - \$104  
Group 3 - \$129  
Group 4 - \$161



### 1-1/4 INCH FINE THREAD TOE OPERATED BATHTUB DRAIN PLUG.

1-1/4 inch Fine Thread Toe Operated Bathtub Drain Plug  
3 inch Brass Dome Stopper  
Includes: 1-1/2 in. Coarse Thread X  
1-1/4 in. Fine Thread Brass Bushing  
Fits 1-1/4 in and 1-1/2 in Drain Opening  
Solid Brass Construction

TBD3088

Group 1 - \$102  
Group 2 - \$115  
Group 3 - \$139  
Group 4 - \$174



# Trim By Design



**1-1/2 INCH COARSE THREAD TOE OPERATED  
INTEGRATED OVERFLOW BATHTUB DRAIN PLUG.**  
1-1/2 inch Coarse Thread Toe Operated Bathtub Drain  
Plug  
2-3/4 inch Brass Dome Stopper  
2-1/2 inch Length  
For Tubs with Integrated Overflow Channels  
Solid Brass Construction

**TBD3888**  
**Group 1 - \$130**  
**Group 2 - \$145**  
**Group 3 - \$179**  
**Group 4 - \$240**



**1-1/2 INCH COARSE THREAD TOE OPERATED  
EXTENDED BATHTUB DRAIN PLUG.**  
1-1/2 inch Coarse Thread Toe Operated Bathtub Drain  
Plug  
2-3/4 inch Brass Dome Stopper  
2-1/2 inch Length  
For Thick Tubs without Overflow Channels  
Solid Brass Construction

**TBD3889**  
**Group 1 - \$130**  
**Group 2 - \$145**  
**Group 3 - \$179**  
**Group 4 - \$240**



**KOHLER TYPE BRASS BUSHING.**  
2 in. Fine O.D. Thread X 1-1/2 in. Coarse I.D. Thread  
Fits Older Kohler Bathtub Drain Shoe (Elbow)  
Converts 2 in. into 1-1/2 in. Bathtub Drain Shoe  
Solid Brass Construction

**TBD3001BBK** \$25

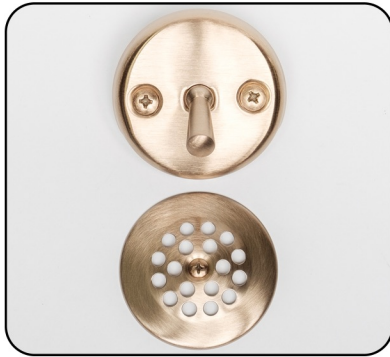


**BRASS HALF FERRULE.**  
1-1/2" O.D. For 17 Gauge Brass Waste and Overflow  
Tubing  
For Brass Waste and Overflow Solder Installations  
Solid Brass Construction

**TBD3000BHF** \$6



# Trim By Design



## **DOMESTRAINER COVER AND TRIP LEVER FACEPLATE KIT.**

Trip Lever Brass Overflow Faceplate and Screws  
2-7/8 in. Brass Dome Strainer Cover and Screw  
Solid Brass Construction

**TBD3052**

**Group 1 - \$118**  
**Group 2 - \$138**  
**Group 3 - \$188**  
**Group 4 - \$235**



## **1-1/4 INCH FINE THREAD DOMESTRAINER BATHTUB PLUG AND TRIP LEVER FACEPLATE KIT.**

Trip Lever Brass Overflow Faceplate and Screws  
2-7/8 in. Brass Dome Strainer Cover and Screw  
1-1/4 in. Fine Thread Brass Dome Strainer Bathtub Drain Plug  
Includes: 1-1/2 in. Coarse Thread X  
1-1/4 in. Fine Thread Brass  
Fits 1-1/4 in and 1-1/2 in Drain Opening  
Solid Brass Construction

**TBD3052C**

**Group 1 - \$147**  
**Group 2 - \$167**  
**Group 3 - \$217**  
**Group 4 - \$264**



## **1-1/2 INCH COARSE THREAD LIFT & TURN BATHTUB DRAIN PLUG AND 1-HOLE FACEPLATE KIT.**

1-Hole Brass Overflow Faceplate and Screw  
1-1/2 in. Coarse Thread Lift & Turn Brass Bathtub Drain Plug  
Solid Brass Construction

**TBD3070**

**Group 1 - \$145**  
**Group 2 - \$165**  
**Group 3 - \$194**  
**Group 4 - \$242**



## **1-1/4 INCH FINE THREAD LIFT & TURN BATHTUB DRAIN PLUG AND 1-HOLE FACEPLATE KIT.**

1-Hole Brass Overflow Faceplate and Screw  
2-Hole to 1-Hole Converter Bracket  
1-1/4 in. Fine Thread Lift & Turn Brass Bathtub Drain Plug  
Includes: 1-1/2 in. Coarse Thread X  
1-1/4 in. Fine Thread Brass Bushing  
Fits 1-1/4 in and 1-1/2 in Drain Opening  
Solid Brass Construction

**TBD3070C**

**Group 1 - \$163**  
**Group 2 - \$183**  
**Group 3 - \$212**  
**Group 4 - \$260**



## **1-1/2 INCH COARSE THREAD LIFT & TURN BATHTUB DRAIN PLUG AND 2-HOLE FACEPLATE KIT.**

2-Hole Brass Overflow Faceplate and Screws  
1-1/2 in. Coarse Thread Lift & Turn Brass Bathtub Drain Plug  
Solid Brass Construction

**TBD3071**

**Group 1 - \$151**  
**Group 2 - \$171**  
**Group 3 - \$199**  
**Group 4 - \$249**

# Trim By Design



**1-1/4 INCH FINE THREAD LIFT & TURN  
BATHTUB DRAIN PLUG AND 2-HOLE FACEPLATE KIT.**  
2-Hole Brass Overflow Faceplate and Screws  
1-1/4 in. Fine Thread Lift & Turn Brass Bathtub Drain Plug  
Includes: 1-1/2 in. Coarse Thread X  
1-1/4 in. Fine Thread Brass Bushing  
Fits 1-1/4 in and 1-1/2 in Drain Opening  
Solid Brass Construction

**TBD3071C**  
**Group 1 - \$166**  
**Group 2 - \$186**  
**Group 3 - \$214**  
**Group 4 - \$264**



**1-1/2 INCH COARSE THREAD TOE OPERATED  
BATHTUB DRAIN PLUG AND 1-HOLE FACEPLATE KIT.**  
1-Hole Brass Overflow Faceplate and Screw  
1-1/2 in. Coarse Thread Toe Operated Brass Bathtub Drain Plug  
Solid Brass Construction

**TBD3080**  
**Group 1 - \$151**  
**Group 2 - \$174**  
**Group 3 - \$210**  
**Group 4 - \$262**



**1-1/4 INCH FINE THREAD TOE OPERATED  
BATHTUB DRAIN PLUG AND 1-HOLE FACEPLATE KIT.**  
1-Hole Brass Overflow Faceplate and Screw  
2-Hole to 1-Hole Converter Bracket  
1-1/4 in. Fine Thread Toe Operated Brass Bathtub Drain Plug  
Includes: 1-1/2 in. Coarse Thread X  
1-1/4 in. Fine Thread Brass Bushing  
Fits 1-1/4 in and 1-1/2 in Drain Opening  
Solid Brass Construction

**TBD3080C**  
**Group 1 - \$169**  
**Group 2 - \$195**  
**Group 3 - \$228**  
**Group 4 - \$280**



**1-1/2 INCH COARSE THREAD TOE OPERATED  
BATHTUB DRAIN PLUG AND 2-HOLE FACEPLATE KIT.**  
2-Hole Brass Overflow Faceplate and Screws  
1-1/2 in. Coarse Thread Toe Operated Brass Bathtub Drain Plug  
Solid Brass Construction

**TBD3081**  
**Group 1 - \$157**  
**Group 2 - \$180**  
**Group 3 - \$215**  
**Group 4 - \$269**



**1-1/4 INCH FINE THREAD TOE OPERATED  
BATHTUB DRAIN PLUG AND 2-HOLE FACEPLATE KIT.**  
2-Hole Brass Overflow Faceplate and Screws  
1-1/4 in. Fine Thread Toe Operated Brass Bathtub Drain Plug  
Includes: 1-1/2 in. Coarse Thread X  
1-1/4 in. Fine Thread Brass Bushing  
Fits 1-1/4 in and 1-1/2 in Drain Opening  
Solid Brass Construction

**TBD3081C**  
**Group 1 - \$172**  
**Group 2 - \$195**  
**Group 3 - \$240**  
**Group 4 - \$284**

# Trim By Design



## **1-1/4 INCH FINE THREAD TOE OPERATED BATHTUB DRAIN PLUG AND 1-HOLE FACEPLATE KIT.**

**TBD3083C**

**Group 1 - \$161**  
**Group 2 - \$185**  
**Group 3 - \$220**  
**Group 4 - \$275**

1-Hole Brass Overflow Faceplate and Screw  
2-Hole to 1-Hole Converter Bracket  
1-1/4 in. Fine Thread Toe Operated Brass Bathtub Drain Plug  
3 inch Toe Operated Dome Stopper  
Includes: 1-1/2 in. Coarse Thread X  
1-1/4 in. Fine Thread Brass Bushing  
Fits 1-1/4 in and 1-1/2 in Drain Opening  
Solid Brass Construction



## **1-1/4 INCH FINE THREAD FLUSH TOE OPERATED BATHTUB DRAIN PLUG AND 1-HOLE FACEPLATE KIT.**

**TBD3085C**

**Group 1 - \$151**  
**Group 2 - \$174**  
**Group 3 - \$210**  
**Group 4 - \$262**

1-Hole Brass Overflow Faceplate and Screw  
2-Hole to 1-Hole Converter Bracket  
1-1/4 in. Fine Thread Toe Operated Brass Bathtub Drain Plug  
Flush Toe Operated Stopper  
Includes: 1-1/2 in. Coarse Thread X  
1-1/4 in. Fine Thread Brass Bushing  
Fits 1-1/4 in and 1-1/2 in Drain Opening  
Solid Brass Construction



## **1-1/4 INCH FINE THREAD TOE OPERATED BATHTUB DRAIN PLUG AND 2-HOLE FACEPLATE KIT.**

**TBD3086C**

**Group 1 - \$167**  
**Group 2 - \$191**  
**Group 3 - \$225**  
**Group 4 - \$282**

2-Hole Brass Overflow Faceplate and Screws  
1-1/4 in. Fine Thread Toe Operated Brass Bathtub Drain Plug  
3 inch Toe Operated Dome Stopper  
Includes: 1-1/2 in. Coarse Thread X  
1-1/4 in. Fine Thread Brass Bushing  
Fits 1-1/4 in and 1-1/2 in Drain Opening  
Solid Brass Construction



## **1-1/4 INCH FINE THREAD FLUSH TOE OPERATED BATHTUB DRAIN PLUG AND 2-HOLE FACEPLATE KIT.**

**TBD3087C**

**Group 1 - \$157**  
**Group 2 - \$180**  
**Group 3 - \$215**  
**Group 4 - \$269**

2-Hole Brass Overflow Faceplate and Screws  
1-1/4 in. Fine Thread Toe Operated Brass Bathtub Drain Plug  
Flush Toe Operated Stopper  
Includes: 1-1/2 in. Coarse Thread X  
1-1/4 in. Fine Thread Brass Bushing  
Fits 1-1/4 in and 1-1/2 in Drain Opening  
Solid Brass Construction



# Trim By Design



## TRIP LEVER WASTE AND OVERFLOW WITH DOME STRAINER.

Trip Lever Brass Overflow Faceplate  
Dome Strainer Brass Bathtub Drain Plug  
10 inch - 14 inch Maximum Vertical Adjustment  
7 inch Maximum Horizontal Adjustment  
17-Gauge Solid Brass Construction  
Solid Brass Trim

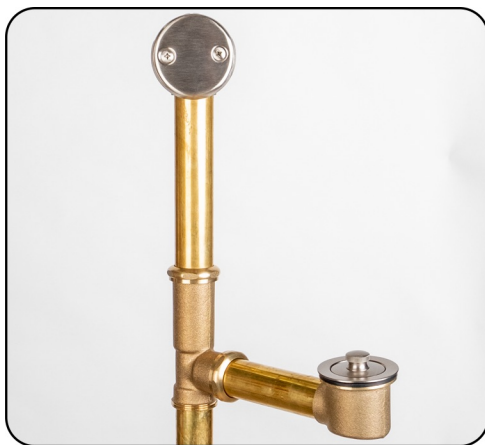
**TBD315**  
**Group 1 - \$375**  
**Group 2 - \$410**  
**Group 3 - \$499**  
**Group 4 - \$624**



## TRIP LEVER WASTE AND OVERFLOW WITH DOME STRAINER.

Trip Lever Brass Overflow Faceplate  
Dome Strainer Brass Bathtub Drain Plug  
16 inch - 22 inch Maximum Vertical Adjustment  
10 inch Maximum Horizontal Adjustment  
17-Gauge Solid Brass Construction  
Solid Brass Trim

**TBD317**  
**Group 1 - \$425**  
**Group 2 - \$449**  
**Group 3 - \$525**  
**Group 4 - \$655**



## LIFT & TURN STYLE WASTE AND OVERFLOW WITH 2-HOLE FACEPLATE.

2-Hole Brass Overflow Faceplate  
Lift & Turn Brass Bathtub Drain Plug  
22 inch Maximum Vertical Adjustment  
10 inch Maximum Horizontal Adjustment  
17-Gauge Solid Brass Construction  
Tube (Pipe) May be Cut to Size at Installation  
Solid Brass Trim

**TBD322**  
**Group 1 - \$499**  
**Group 2 - \$525**  
**Group 3 - \$565**  
**Group 4 - \$699**



## LIFT & TURN STYLE WASTE AND OVERFLOW WITH 1-HOLE FACEPLATE.

1-Hole Brass Overflow Faceplate  
Lift & Turn Brass Bathtub Drain Plug  
22 inch Maximum Vertical Adjustment  
10 inch Maximum Horizontal Adjustment  
17-Gauge Solid Brass Construction  
Tube (Pipe) May be Cut to Size at Installation  
Solid Brass Trim

**TBD3221**  
**Group 1 - \$499**  
**Group 2 - \$525**  
**Group 3 - \$565**  
**Group 4 - \$699**



# Trim By Design

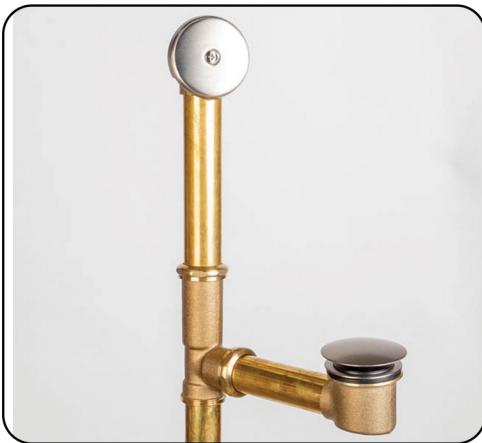


## TOE OPERATED WASTE AND OVERFLOW WITH 2-HOLE FACEPLATE.

2-Hole Brass Overflow Faceplate  
Toe Operated Brass Bathtub Drain Plug  
3 inch Brass Dome Stopper  
22 inch Maximum Vertical Adjustment  
10 inch Maximum Horizontal Adjustment  
17-Gauge Solid Brass Construction  
Tube (Pipe) May be Cut to Size at Installation  
Solid Brass Trim

TBD326

Group 1 - \$533  
Group 2 - \$557  
Group 3 - \$650  
Group 4 - \$799



## TOE OPERATED WASTE AND OVERFLOW WITH 1-HOLE FACEPLATE.

1-Hole Brass Overflow Faceplate  
Toe Operated Brass Bathtub Drain Plug  
3 inch Brass Dome Stopper  
22 inch Maximum Vertical Adjustment  
10 inch Maximum Horizontal Adjustment  
17-Gauge Solid Brass Construction  
Tube (Pipe) May be Cut to Size at Installation  
Solid Brass Trim

TBD3261

Group 1 - \$533  
Group 2 - \$557  
Group 3 - \$650  
Group 4 - \$799



## TRIP LEVER WASTE AND OVERFLOW WITH DOME STRAINER.

Trip Lever Brass Overflow Faceplate  
Dome Strainer Brass Bathtub Drain Plug  
10 inch - 14 inch Maximum Vertical Adjustment  
7 inch Maximum Horizontal Adjustment  
17-Gauge Solid Brass Construction  
Solid Brass Trim

TBD316

Group 1 - \$710  
Group 2 - \$724  
Group 3 - \$783  
Group 4 - \$979

**COMPLETELY PLATED FOR ABOVE-THE-FLOOR AND FREESTANDING BATHTUB INSTALLATIONS**



## TRIP LEVER WASTE AND OVERFLOW WITH DOME STRAINER.

Trip Lever Brass Overflow Faceplate  
Dome Strainer Brass Bathtub Drain Plug  
16 inch - 22 inch Maximum Vertical Adjustment  
10 inch Maximum Horizontal Adjustment  
17-Gauge Solid Brass Construction  
Solid Brass Trim

TBD318

Group 1 - \$750  
Group 2 - \$764  
Group 3 - \$823  
Group 4 - \$1018

**COMPLETELY PLATED FOR ABOVE-THE-FLOOR AND FREESTANDING BATHTUB INSTALLATIONS**



**LIFT & TURN STYLE WASTE AND OVERFLOW WITH 2-HOLE FACEPLATE.**

2-Hole Brass Overflow Faceplate  
Lift & Turn Brass Bathtub Drain Plug  
22 inch Maximum Vertical Adjustment  
10 inch Maximum Horizontal Adjustment  
17-Gauge Solid Brass Construction  
Tube (Pipe) May be Cut to Size at Installation  
Solid Brass Trim

**COMPLETELY PLATED FOR ABOVE-THE-FLOOR AND FREESTANDING BATHTUB INSTALLATIONS**

**TBD323**  
**Group 1 - \$781**  
**Group 2 - \$799**  
**Group 3 - \$931**  
**Group 4 - \$1163**



**LIFT & TURN STYLE WASTE AND OVERFLOW WITH 1-HOLE FACEPLATE.**

1-Hole Brass Overflow Faceplate  
Lift & Turn Brass Bathtub Drain Plug  
22 inch Maximum Vertical Adjustment  
10 inch Maximum Horizontal Adjustment  
17-Gauge Solid Brass Construction  
Tube (Pipe) May be Cut to Size at Installation  
Solid Brass Trim

**COMPLETELY PLATED FOR ABOVE-THE-FLOOR AND FREESTANDING BATHTUB INSTALLATIONS**

**TBD3231**  
**Group 1 - \$781**  
**Group 2 - \$799**  
**Group 3 - \$931**  
**Group 4 - \$1163**



**LIFT & TURN STYLE WASTE AND OVERFLOW WITH VINTAGE STYLE FACEPLATE.**

Vintage (Daisy) Style Brass Overflow Faceplate  
Lift & Turn Brass Bathtub Drain Plug  
22 inch Maximum Vertical Adjustment  
10 inch Maximum Horizontal Adjustment  
17-Gauge Solid Brass Construction  
Tube (Pipe) May be Cut to Size at Installation  
Solid Brass Trim

**COMPLETELY PLATED FOR ABOVE-THE-FLOOR AND FREESTANDING BATHTUB INSTALLATIONS**

**TBD325**  
**Group 1 - \$781**  
**Group 2 - \$799**  
**Group 3 - \$931**  
**Group 4 - \$1163**



**TOE OPERATED WASTE AND OVERFLOW WITH 1-HOLE FACEPLATE.**

1-Hole Brass Overflow Faceplate  
Toe Operated Brass Bathtub Drain Plug  
3 inch Brass Dome Stopper  
22 inch Maximum Vertical Adjustment  
10 inch Maximum Horizontal Adjustment  
17-Gauge Solid Brass Construction  
Tube (Pipe) May be Cut to Size at Installation  
Solid Brass Trim

**COMPLETELY PLATED FOR ABOVE-THE-FLOOR AND FREESTANDING BATHTUB INSTALLATIONS**

**TBD3271**  
**Group 1 - \$791**  
**Group 2 - \$815**  
**Group 3 - \$952**  
**Group 4 - \$1190**

# Trim By Design



## TOE OPERATED WASTE AND OVERFLOW WITH VINTAGE STYLE FACEPLATE.

Vintage (Daisy) Style Brass Overflow Faceplate  
Toe Operated Brass Bathtub Drain Plug  
3 inch Brass Dome Stopper  
22 inch Maximum Vertical Adjustment  
10 inch Maximum Horizontal Adjustment  
17-Gauge Solid Brass Construction  
Tube (Pipe) May be Cut to Size at Installation  
Solid Brass Trim

**COMPLETELY PLATED FOR ABOVE-THE-FLOOR AND  
FREESTANDING BATHTUB INSTALLATIONS**

TBD328

**Group 1 - \$791**  
**Group 2 - \$815**  
**Group 3 - \$952**  
**Group 4 - \$1190**



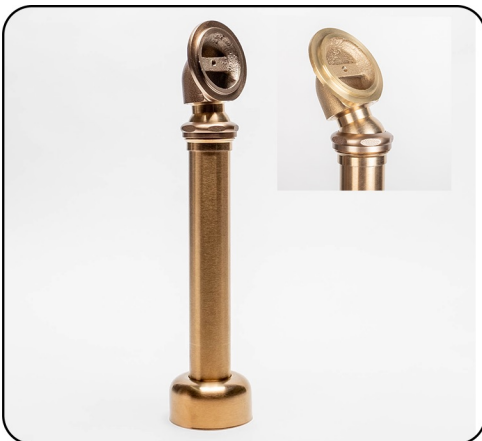
## PIVOTING TOE OPERATED WASTE AND OVERFLOW WITH 1-HOLE FACEPLATE.

Pivoting Head (Adjustable)  
1-Hole Brass Overflow Faceplate  
Toe Operated Brass Bathtub Drain Plug  
3 inch Brass Dome Stopper  
24 inch Maximum Vertical Adjustment  
24 inch Maximum Horizontal Adjustment  
17-Gauge Solid Brass Construction  
Tube (Pipe) May be Cut to Size at Installation  
Solid Brass Trim

**COMPLETELY PLATED FOR ABOVE-THE-FLOOR AND  
FREESTANDING BATHTUB INSTALLATIONS**

TBD3141

**Group 1 - \$811**  
**Group 2 - \$835**  
**Group 3 - \$1129**  
**Group 4 - \$1490**



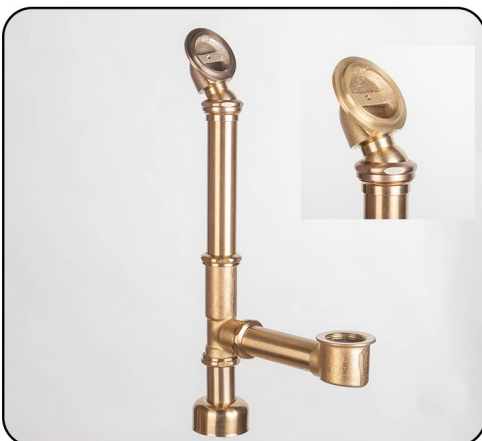
## PIVOTING SUB-FLOOR BATHTUB WASTE AND OVERFLOW LESS TRIM.

Pivoting Head (Adjustable)  
24 inch Maximum Vertical Adjustment  
Compatible with TBD300 or TBD303 Overflow Faceplates  
17-Gauge Solid Brass Construction  
Tube (Pipe) May be Cut to Size at Installation

**COMPLETELY PLATED FOR ABOVE-THE-FLOOR AND  
FREESTANDING BATHTUB INSTALLATIONS**

TBD327

**Group 1 - \$448**  
**Group 2 - \$520**  
**Group 3 - \$599**  
**Group 4 - \$749**



## PIVOTING 1-HOLE WASTE AND OVERFLOW LESS TRIM.

Pivoting Head (Adjustable)  
24 inch Maximum Vertical Adjustment  
24 inch Maximum Horizontal Adjustment  
Compatible with any TBD 1-Hole Bathtub Trim Kit  
17-Gauge Solid Brass Construction  
Tube (Pipe) May be Cut to Size at Installation

**COMPLETELY PLATED FOR ABOVE-THE-FLOOR AND  
FREESTANDING BATHTUB INSTALLATIONS**

TBD3251LT

**Group 1 - \$739**  
**Group 2 - \$815**  
**Group 3 - \$972**  
**Group 4 - \$1215**



# Trim By Design



## TOE OPERATED WASTE AND OVERFLOW WITH 2-HOLE FACEPLATE.

2-Hole Brass Overflow Faceplate  
 Toe Operated Brass Bathtub Drain Plug  
 14 inch Maximum Vertical Adjustment  
 8 inch Maximum Horizontal Adjustment  
 1-1/2 inch Schedule 40 ABS Plastic Body  
 Tube (Pipe) May be Extended (Replaced) for Custom Installation  
 Tube (Pipe) May be Cut to Size at Installation  
 Solid Brass Trim

**TBD330A**    **Group 1** - \$226  
**Group 2** - \$249  
**Group 3** - \$284  
**Group 4** - \$338



## TOE OPERATED WASTE AND OVERFLOW WITH 1-HOLE FACEPLATE.

1-Hole Brass Overflow Faceplate  
 Toe Operated Brass Bathtub Drain Plug  
 14 inch Maximum Vertical Adjustment  
 8 inch Maximum Horizontal Adjustment  
 1-1/2 inch Schedule 40 ABS Plastic Body  
 Tube (Pipe) May be Extended (Replaced) for Custom Installation  
 Tube (Pipe) May be Cut to Size at Installation  
 Solid Brass Trim

**TBD3301A**    **Group 1** - \$220  
**Group 2** - \$243  
**Group 3** - \$279  
**Group 4** - \$331



## TOE OPERATED WASTE AND OVERFLOW WITH 2-HOLE FACEPLATE.

2-Hole Brass Overflow Faceplate  
 Toe Operated Brass Bathtub Drain Plug  
 14 inch Maximum Vertical Adjustment  
 8 inch Maximum Horizontal Adjustment  
 1-1/2 inch Schedule 40 PVC Plastic Body  
 Tube (Pipe) May be Extended (Replaced) for Custom Installation  
 Tube (Pipe) May be Cut to Size at Installation  
 Solid Brass Trim

**TBD330P**    **Group 1** - \$256  
**Group 2** - \$279  
**Group 3** - \$314  
**Group 4** - \$368



## TOE OPERATED WASTE AND OVERFLOW WITH 1-HOLE FACEPLATE.

1-Hole Brass Overflow Faceplate  
 Toe Operated Brass Bathtub Drain Plug  
 14 inch Maximum Vertical Adjustment  
 8 inch Maximum Horizontal Adjustment  
 1-1/2 inch Schedule 40 PVC Plastic Body  
 Tube (Pipe) May be Extended (Replaced) for Custom Installation  
 Tube (Pipe) May be Cut to Size at Installation  
 Solid Brass Trim

**TBD3301P**    **Group 1** - \$250  
**Group 2** - \$272  
**Group 3** - \$309  
**Group 4** - \$361



# Trim By Design



## LIFT & TURN WASTE AND OVERFLOW WITH 2-HOLE FACEPLATE.

2-Hole Brass Overflow Faceplate  
Lift & Turn Brass Bathtub Drain Plug  
14 inch Maximum Vertical Adjustment  
8 inch Maximum Horizontal Adjustment  
1-1/2 inch Schedule 40 ABS Plastic Body  
Tube (Pipe) May be Extended (Replaced) for  
Custom Installation  
Tube (Pipe) May be Cut to Size at Installation  
Solid Brass Trim

**TBD331A**    **Group 1** - \$220  
**Group 2** - \$240  
**Group 3** - \$268  
**Group 4** - \$318



## LIFT & TURN WASTE AND OVERFLOW WITH 1-HOLE FACEPLATE.

1-Hole Brass Overflow Faceplate  
Lift & Turn Brass Bathtub Drain Plug  
14 inch Maximum Vertical Adjustment  
8 inch Maximum Horizontal Adjustment  
1-1/2 inch Schedule 40 ABS Plastic Body  
Tube (Pipe) May be Extended (Replaced) for  
Custom Installation  
Tube (Pipe) May be Cut to Size at Installation  
Solid Brass Trim

**TBD3311A**    **Group 1** - \$214  
**Group 2** - \$234  
**Group 3** - \$263  
**Group 4** - \$311



## LIFT & TURN WASTE AND OVERFLOW WITH 2-HOLE FACEPLATE.

2-Hole Brass Overflow Faceplate  
Lift & Turn Brass Bathtub Drain Plug  
14 inch Maximum Vertical Adjustment  
8 inch Maximum Horizontal Adjustment  
1-1/2 inch Schedule 40 PVC Plastic Body  
Tube (Pipe) May be Extended (Replaced) for  
Custom Installation  
Tube (Pipe) May be Cut to Size at Installation  
Solid Brass Trim

**TBD331P**    **Group 1** - \$250  
**Group 2** - \$270  
**Group 3** - \$298  
**Group 4** - \$348



## LIFT & TURN WASTE AND OVERFLOW WITH 1-HOLE FACEPLATE.

1-Hole Brass Overflow Faceplate  
Lift & Turn Brass Bathtub Drain Plug  
14 inch Maximum Vertical Adjustment  
8 inch Maximum Horizontal Adjustment  
1-1/2 inch Schedule 40 PVC Plastic Body  
Tube (Pipe) May be Extended (Replaced) for  
Custom Installation  
Tube (Pipe) May be Cut to Size at Installation  
Solid Brass Trim

**TBD3311P**    **Group 1** - \$244  
**Group 2** - \$264  
**Group 3** - \$293  
**Group 4** - \$341

# Trim By Design



## TOE OPERATED WASTE AND OVERFLOW WITH 2-HOLE FACEPLATE.

2-Hole Brass Overflow Faceplate  
Flush Stopper Toe Operated Brass Bathtub Drain Plug  
14 inch Maximum Vertical Adjustment  
8 inch Maximum Horizontal Adjustment  
1-1/2 inch Schedule 40 ABS Plastic Body  
Tube (Pipe) May be Extended (Replaced) for  
Custom Installation  
Tube (Pipe) May be Cut to Size at Installation  
Solid Brass Trim

**TBD332A**    **Group 1 - \$226**  
**Group 2 - \$249**  
**Group 3 - \$284**  
**Group 4 - \$338**



## TOE OPERATED WASTE AND OVERFLOW WITH 1-HOLE FACEPLATE.

1-Hole Brass Overflow Faceplate  
Flush Stopper Toe Operated Brass Bathtub Drain Plug  
14 inch Maximum Vertical Adjustment  
8 inch Maximum Horizontal Adjustment  
1-1/2 inch Schedule 40 ABS Plastic Body  
Tube (Pipe) May be Extended (Replaced) for  
Custom Installation  
Tube (Pipe) May be Cut to Size at Installation  
Solid Brass Trim

**TBD3321A**    **Group 1 - \$217**  
**Group 2 - \$240**  
**Group 3 - \$276**  
**Group 4 - \$328**



## TOE OPERATED WASTE AND OVERFLOW WITH 2-HOLE FACEPLATE.

2-Hole Brass Overflow Faceplate  
Flush Stopper Toe Operated Brass Bathtub Drain Plug  
14 inch Maximum Vertical Adjustment  
8 inch Maximum Horizontal Adjustment  
1-1/2 inch Schedule 40 PVC Plastic Body  
Tube (Pipe) May be Extended (Replaced) for  
Custom Installation  
Tube (Pipe) May be Cut to Size at Installation  
Solid Brass Trim

**TBD332P**    **Group 1 - \$256**  
**Group 2 - \$279**  
**Group 3 - \$314**  
**Group 4 - \$368**



## TOE OPERATED WASTE AND OVERFLOW WITH 1-HOLE FACEPLATE.

1-Hole Brass Overflow Faceplate  
Flush Stopper Toe Operated Brass Bathtub Drain Plug  
14 inch Maximum Vertical Adjustment  
8 inch Maximum Horizontal Adjustment  
1-1/2 inch Schedule 40 PVC Plastic Body  
Tube (Pipe) May be Extended (Replaced) for  
Custom Installation  
Tube (Pipe) May be Cut to Size at Installation  
Solid Brass Trim

**TBD3321P**    **Group 1 - \$247**  
**Group 2 - \$270**  
**Group 3 - \$306**  
**Group 4 - \$259**

# Trim By Design



## TOE OPERATED WASTE AND OVERFLOW WITH 2-HOLE FACEPLATE.

2-Hole Brass Overflow Faceplate  
 Toe Operated Brass Bathtub Drain Plug  
 3 inch Brass Dome Stopper  
 14 inch Maximum Vertical Adjustment  
 8 inch Maximum Horizontal Adjustment  
 1-1/2 inch Schedule 40 ABS Plastic Body  
 Tube (Pipe) May be Extended (Replaced) for Custom Installation  
 Tube (Pipe) May be Cut to Size at Installation  
 Solid Brass Trim

**TBD333A**    **Group 1** - \$236  
                   **Group 2** - \$260  
                   **Group 3** - \$294  
                   **Group 4** - \$351



## TOE OPERATED WASTE AND OVERFLOW WITH 1-HOLE FACEPLATE.

1-Hole Brass Overflow Faceplate  
 Toe Operated Brass Bathtub Drain Plug  
 3 inch Brass Dome Stopper  
 14 inch Maximum Vertical Adjustment  
 8 inch Maximum Horizontal Adjustment  
 1-1/2 inch Schedule 40 ABS Plastic Body  
 Tube (Pipe) May be Extended (Replaced) for Custom Installation  
 Tube (Pipe) May be Cut to Size at Installation  
 Solid Brass Trim

**TBD3331A**    **Group 1** - \$227  
                   **Group 2** - \$251  
                   **Group 3** - \$286  
                   **Group 4** - \$341



## TOE OPERATED WASTE AND OVERFLOW WITH 2-HOLE FACEPLATE.

2-Hole Brass Overflow Faceplate  
 Toe Operated Brass Bathtub Drain Plug  
 3 inch Brass Dome Stopper  
 14 inch Maximum Vertical Adjustment  
 8 inch Maximum Horizontal Adjustment  
 1-1/2 inch Schedule 40 PVC Plastic Body  
 Tube (Pipe) May be Extended (Replaced) for Custom Installation  
 Tube (Pipe) May be Cut to Size at Installation  
 Solid Brass Trim

**TBD333P**    **Group 1** - \$266  
                   **Group 2** - \$290  
                   **Group 3** - \$324  
                   **Group 4** - \$381



## TOE OPERATED WASTE AND OVERFLOW WITH 1-HOLE FACEPLATE.

1-Hole Brass Overflow Faceplate  
 Toe Operated Brass Bathtub Drain Plug  
 3 inch Brass Dome Stopper  
 14 inch Maximum Vertical Adjustment  
 8 inch Maximum Horizontal Adjustment  
 1-1/2 inch Schedule 40 PVC Plastic Body  
 Tube (Pipe) May be Extended (Replaced) for Custom Installation  
 Tube (Pipe) May be Cut to Size at Installation  
 Solid Brass Trim

**TBD3331P**    **Group 1** - \$257  
                   **Group 2** - \$281  
                   **Group 3** - \$316  
                   **Group 4** - \$337



# Trim By Design

**1-1/2 INCH ABS CABLE OPERATED  
WASTE AND OVERFLOW DRAIN.**

1-1/2 inch Schedule 40 ABS (Pipe not included)  
Fits Maximum of 22 inch Depth for Baths and Whirlpools  
Pivoting Head (Adjustable)  
Solid Brass Trim  
IAPMO / UPC Listed

**TBD335A22**    **Group 1** - \$299  
**Group 2** - \$342  
**Group 3** - \$418  
**Group 4** - \$488

**1-1/2 INCH ABS CABLE OPERATED  
WASTE AND OVERFLOW DRAIN.**

1-1/2 inch Schedule 40 ABS (Pipe not included)  
Fits Maximum of 22 inch Depth for Baths and Whirlpools  
Extended Stem and Nut for Tubs up to 5/8 inch Thick  
Pivoting Head (Adjustable)  
Solid Brass Trim  
IAPMO / UPC Listed

**TBD335A22EXT**    **Group 1** - \$389  
**Group 2** - \$432  
**Group 3** - \$508  
**Group 4** - \$578

**1-1/2 INCH ABS CABLE OPERATED  
WASTE AND OVERFLOW DRAIN.**

1-1/2 inch Schedule 40 ABS (Pipe not included)  
Fits Maximum of 29 inch Depth for Baths and Whirlpools  
Pivoting Head (Adjustable)  
Solid Brass Trim  
IAPMO / UPC Listed

**TBD335A29**    **Group 1** - \$324  
**Group 2** - \$367  
**Group 3** - \$433  
**Group 4** - \$513

**1-1/2 INCH ABS CABLE OPERATED  
WASTE AND OVERFLOW DRAIN.**

1-1/2 inch Schedule 40 ABS (Pipe not included)  
Fits Maximum of 29 inch Depth for Baths and Whirlpools  
Extended Stem and Nut for Tubs up to 5/8 inch Thick  
Pivoting Head (Adjustable)  
Solid Brass Trim  
IAPMO / UPC Listed

**TBD335A29EXT**    **Group 1** - \$414  
**Group 2** - \$457  
**Group 3** - \$523  
**Group 4** - \$603

**1-1/2 INCH PVC CABLE OPERATED  
WASTE AND OVERFLOW DRAIN.**

1-1/2 inch Schedule 40 PVC (Pipe not included)  
Fits Maximum of 22 inch Depth for Baths and Whirlpools  
Pivoting Head (Adjustable)  
Solid Brass Trim  
IAPMO / UPC Listed

**TBD335P22**    **Group 1** - \$299  
**Group 2** - \$342  
**Group 3** - \$418  
**Group 4** - \$488



# Trim By Design



## **1-1/2 INCH PVC CABLE OPERATED WASTE AND OVERFLOW DRAIN.**

**TBD335P22EXT**

**Group 1 - \$389**  
**Group 2 - \$432**  
**Group 3 - \$508**  
**Group 4 - \$578**

1-1/2 inch Schedule 40 PVC (Pipe not included)  
Fits Maximum of 22 inch Depth for Baths and Whirlpools  
Extended Stem and Nut for Tubs up to 5/8 inch Thick  
Pivoting Head (Adjustable)  
Solid Brass Trim  
IAPMO / UPC Listed



## **1-1/2 INCH PVC CABLE OPERATED WASTE AND OVERFLOW DRAIN.**

**TBD335P29**

**Group 1 - \$324**  
**Group 2 - \$367**  
**Group 3 - \$433**  
**Group 4 - \$513**

1-1/2 inch Schedule 40 PVC (Pipe not included)  
Fits Maximum of 29 inch Depth for Baths and Whirlpools  
Pivoting Head (Adjustable)  
Solid Brass Trim  
IAPMO / UPC Listed

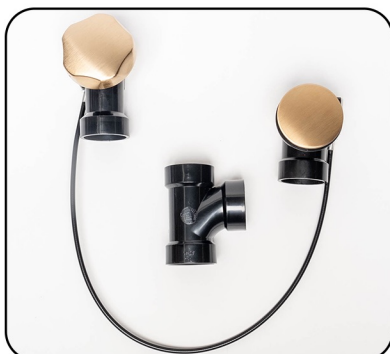


## **1-1/2 INCH PVC CABLE OPERATED WASTE AND OVERFLOW DRAIN.**

**TBD335P29EXT**

**Group 1 - \$414**  
**Group 2 - \$457**  
**Group 3 - \$523**  
**Group 4 - \$603**

1-1/2 inch Schedule 40 PVC (Pipe not included)  
Fits Maximum of 29 inch Depth for Baths and Whirlpools  
Extended Stem and Nut for Tubs up to 5/8 inch Thick  
Pivoting Head (Adjustable)  
Solid Brass Trim  
IAPMO / UPC Listed



## **1-1/2 INCH ABS CABLE OPERATED WASTE AND OVERFLOW DRAIN.**

**TBD336A22**

**Group 1 - \$299**  
**Group 2 - \$342**  
**Group 3 - \$418**  
**Group 4 - \$488**

1-1/2 inch Schedule 40 ABS (Pipe not included)  
Fits Maximum of 22 inch Depth for Baths and Whirlpools  
Rigid Head (Non-Adjustable)  
Solid Brass Trim  
IAPMO / UPC Listed



## **1-1/2 INCH ABS CABLE OPERATED WASTE AND OVERFLOW DRAIN.**

**TBD336A22EXT**

**Group 1 - \$389**  
**Group 2 - \$432**  
**Group 3 - \$508**  
**Group 4 - \$578**

1-1/2 inch Schedule 40 ABS (Pipe not included)  
Fits Maximum of 22 inch Depth for Baths and Whirlpools  
Extended Stem and Nut for Tubs up to 5/8 inch Thick  
Rigid Head (Non-Adjustable)  
Solid Brass Trim  
IAPMO / UPC Listed

# Trim By Design

**1-1/2 INCH ABS CABLE OPERATED  
WASTE AND OVERFLOW DRAIN.**

1-1/2 inch Schedule 40 ABS (Pipe not included)  
Fits Maximum of 29 inch Depth for Baths and Whirlpools  
Rigid Head (Non-Adjustable)  
Solid Brass Trim  
IAPMO / UPC Listed

**TBD336A29**    **Group 1 - \$324**  
**Group 2 - \$367**  
**Group 3 - \$433**  
**Group 4 - \$513**

**1-1/2 INCH ABS CABLE OPERATED  
WASTE AND OVERFLOW DRAIN.**

1-1/2 inch Schedule 40 ABS (Pipe not included)  
Fits Maximum of 29 inch Depth for Baths and Whirlpools  
Extended Stem and Nut for Tubs up to 5/8 inch Thick  
Rigid Head (Non-Adjustable)  
Solid Brass Trim  
IAPMO / UPC Listed

**TBD336A29EXT**    **Group 1 - \$414**  
**Group 2 - \$457**  
**Group 3 - \$523**  
**Group 4 - \$603**

**1-1/2 INCH PVC CABLE OPERATED  
WASTE AND OVERFLOW DRAIN.**

1-1/2 inch Schedule 40 PVC (Pipe not included)  
Fits Maximum of 22 inch Depth for Baths and Whirlpools  
Rigid Head (Non-Adjustable)  
Solid Brass Trim  
IAPMO / UPC Listed

**TBD336P22**    **Group 1 - \$299**  
**Group 2 - \$342**  
**Group 3 - \$418**  
**Group 4 - \$488**

**1-1/2 INCH PVC CABLE OPERATED  
WASTE AND OVERFLOW DRAIN.**

1-1/2 inch Schedule 40 PVC (Pipe not included)  
Fits Maximum of 22 inch Depth for Baths and Whirlpools  
Extended Stem and Nut for Tubs up to 5/8 inch Thick  
Rigid Head (Non-Adjustable)  
Solid Brass Trim  
IAPMO / UPC Listed

**TBD336P22EXT**    **Group 1 - \$389**  
**Group 2 - \$432**  
**Group 3 - \$508**  
**Group 4 - \$578**

**1-1/2 INCH PVC CABLE OPERATED  
WASTE AND OVERFLOW DRAIN.**

1-1/2 inch Schedule 40 PVC (Pipe not included)  
Fits Maximum of 29 inch Depth for Baths and Whirlpools  
Rigid Head (Non-Adjustable)  
Solid Brass Trim  
IAPMO / UPC Listed

**TBD336P29**    **Group 1 - \$324**  
**Group 2 - \$367**  
**Group 3 - \$433**  
**Group 4 - \$513**

# Trim By Design



## **1-1/2 INCH PVC CABLE OPERATED WASTE AND OVERFLOW DRAIN.**

1-1/2 inch Schedule 40 PVC (Pipe not included)  
Fits Maximum of 29 inch Depth for Baths and Whirlpools  
Extended Stem and Nut for Tubs up to 5/8 inch Thick  
Rigid Head (Non-Adjustable)  
Solid Brass Trim  
IAPMO / UPC Listed

**TBD336P29EXT**

**Group 1 - \$414**  
**Group 2 - \$457**  
**Group 3 - \$523**  
**Group 4 - \$603**



## **CABLE OPERATED TUBULAR WASTE AND OVERFLOW DRAIN.**

Fits Maximum of 22 inch Depth for Baths and Whirlpools  
Made of 1-1/2 inch Tubular PVC  
Rigid Head (Non-Adjustable)  
Solid Brass Trim

**TBD337P22**

**Group 1 - \$199**  
**Group 2 - \$229**  
**Group 3 - \$239**  
**Group 4 - \$299**



## **EXTENSION BOLT FOR CABLE OPERATED WASTE AND OVERFLOW DRAINS.**

1-1/2 inch Long Bolt for Bathtubs With Thick Flooring  
Fits all Trim By Design Cable Operated Bath Wastes  
Solid Brass Construction

**TBD335-20.42MM**

**\$15.00**

# Trim By Design



## ROMAN TUB DRAIN TRIM SET.

Fits Assorted Brands EZ Test Shower Drain Bodies  
2-7/8 inch Center-to-Center Screw Holes  
3-1/2 inch Diameter  
Solid Brass Construction

**TBD309**

**Group 1 - \$155**  
**Group 2 - \$195**  
**Group 3 - \$266**  
**Group 4 - \$333**



## DELUXE ROMAN TUB DRAIN TRIM SET.

Fits Assorted Brands EZ Test Shower Drain Bodies  
2-7/8 inch Center-to-Center Screw Holes  
3-1/2 inch Diameter Drain Top  
4-1/4 inch Tile Square  
Solid Brass Construction

**TBD310**

**Group 1 - \$185**  
**Group 2 - \$235**  
**Group 3 - \$315**  
**Group 4 - \$394**



## DELUXE DRAIN TRIM SET.

Fits Assorted Brands EZ Test Shower Drain Bodies  
2-7/8 inch Center-to-Center Screw Holes  
3-9/16 inch Diameter Crown  
4-1/4 inch Tile Square  
Solid Brass Construction

**TBD346**

**Group 1 - \$69**  
**Group 2 - \$85**  
**Group 3 - \$129**  
**Group 4 - \$161**



## DELUXE DRAIN TRIM SET.

Fits Frank Pattern Domestic (Instant Set)  
Part Number: #20SD Shower Drain  
3-1/2 inch Crown  
2-7/8 inch Prong-to-Prong Grill  
4-1/4 inch Tile Square  
Solid Brass Construction

**TBD349**

**Group 1 - \$79**  
**Group 2 - \$86**  
**Group 3 - \$99**  
**Group 4 - \$125**



## 4-1/2 INCH O.D. SNAP-IN STRAINER.

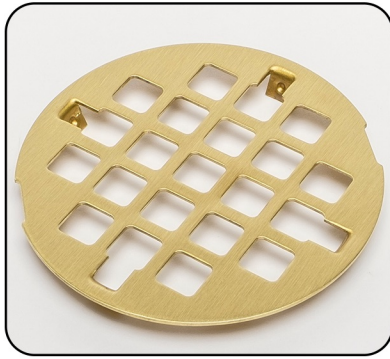
3-1/8 inch Prong-to-Prong  
Solid Brass Construction

**TBD350**

**Group 1 - \$49**  
**Group 2 - \$56**  
**Group 3 - \$75**  
**Group 4 - \$99**



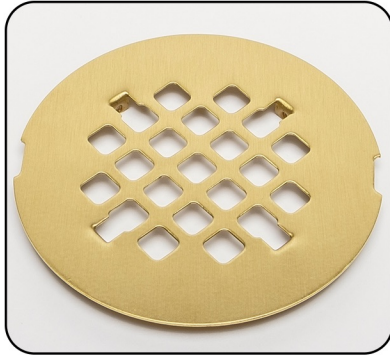
# Trim By Design



**3-1/4 INCH O.D. SNAP-IN STRAINER.**  
2-7/8 inch Prong-to-Prong  
Solid Brass Construction

**TBD351**

**Group 1 -** \$39  
**Group 2 -** \$55  
**Group 3 -** \$62  
**Group 4 -** \$78



**4-1/4 INCH O.D. SNAP-IN STRAINER.**  
2-7/8 inch Prong-to-Prong  
Solid Brass Construction

**TBD352**

**Group 1 -** \$49  
**Group 2 -** \$56  
**Group 3 -** \$69  
**Group 4 -** \$90



**4 INCH O.D. SHOWER STRAINER WITH SCREWS.**  
3-3/8 inch Center-to-Center Screw Holes  
Solid Brass Construction

**TBD353**

**Group 1 -** \$49  
**Group 2 -** \$56  
**Group 3 -** \$69  
**Group 4 -** \$90



**4-1/4 INCH O.D. SHOWER STRAINER WITH SCREWS.**  
2-5/8 inch Center-to-Center Screw Holes  
Solid Brass Construction

**TBD354**

**Group 1 -** \$49  
**Group 2 -** \$56  
**Group 3 -** \$69  
**Group 4 -** \$90

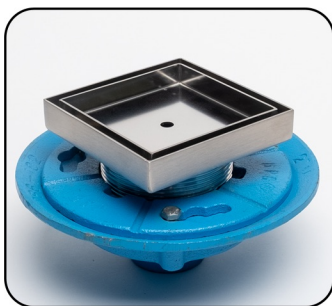


**4-1/4 INCH O.D. SNAP-IN STRAINER.**  
2-7/8 inch Prong-to-Prong  
Solid Brass Construction

**TBD355**

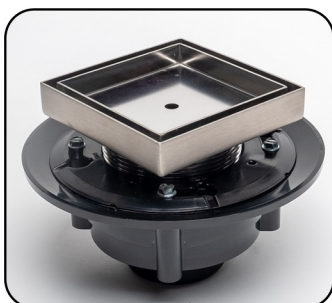
**Group 1 -** \$49  
**Group 2 -** \$56  
**Group 3 -** \$69  
**Group 4 -** \$90

# Trim By Design


**FLOOR AND SHOWER SQUARE TILE DRAIN.**

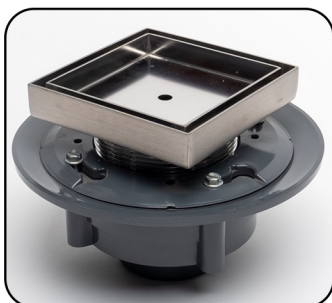
Fits 2 inch No-Hub Cast Iron Pipe  
Includes Cast Iron Drain Body  
5 inch Square Stainless Steel Tile Insert Top  
Includes Hair Strainer Basket and Lifting Key

**TBD364**      **Group 1** - \$410  
**Group 2** - \$534  
**Group 3** - \$594  
**Group 4** - \$681


**FLOOR AND SHOWER SQUARE TILE DRAIN.**

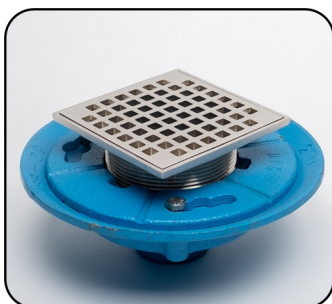
Fits 2 inch ABS Pipe  
Includes ABS Drain Body  
5 inch Square Stainless Steel Tile Insert Top  
Includes Hair Strainer Basket and Lifting Key

**TBD364A**      **Group 1** - \$290  
**Group 2** - \$414  
**Group 3** - \$474  
**Group 4** - \$561


**FLOOR AND SHOWER SQUARE TILE DRAIN.**

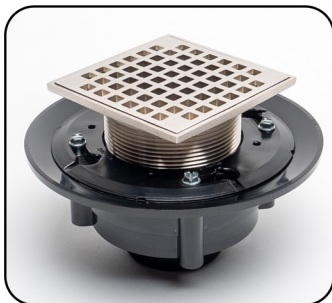
Fits 2 inch PVC Pipe  
Includes PVC Drain Body  
5 inch Square Stainless Steel Tile Insert Top  
Includes Hair Strainer Basket and Lifting Key

**TBD364P**      **Group 1** - \$290  
**Group 2** - \$414  
**Group 3** - \$474  
**Group 4** - \$561


**5 INCH SQUARE FLOOR SHOWER DRAIN.**

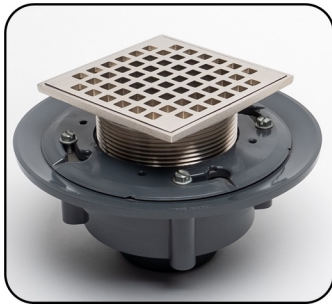
Fits 2 inch No-Hub Cast Iron Pipe  
Includes Cast Iron Drain Body  
Magnetically Secured for Easy Access  
Solid Brass Heavy-Duty Drain Top

**TBD362**      **Group 1** - \$550  
**Group 2** - \$594  
**Group 3** - \$620  
**Group 4** - \$744


**5 INCH SQUARE FLOOR SHOWER DRAIN.**

Fits 2 inch ABS Pipe  
Includes ABS Drain Body  
Magnetically Secured for Easy Access  
Solid Brass Heavy-Duty Drain Top

**TBD362A**      **Group 1** - \$430  
**Group 2** - \$474  
**Group 3** - \$499  
**Group 4** - \$624


**5 INCH SQUARE FLOOR SHOWER DRAIN.**

Fits 2 inch PVC Pipe  
Includes PVC Drain Body  
Magnetically Secured for Easy Access  
Solid Brass Heavy-Duty Drain Top

**TBD362P**      **Group 1** - \$430  
**Group 2** - \$474  
**Group 3** - \$499  
**Group 4** - \$624

# Trim By Design



## 10 INCH LAVATORY DRAIN TAILPIECE WITH OVERFLOW HOLES.

5-1/2 inch of Thread

Designed for Thick Countertops and/or Sinks

Works with TBD400, TBD4001, TBD402, TBD404,  
TBD4021, TBD4033, TBD410 and TBD4101

Solid Brass Construction

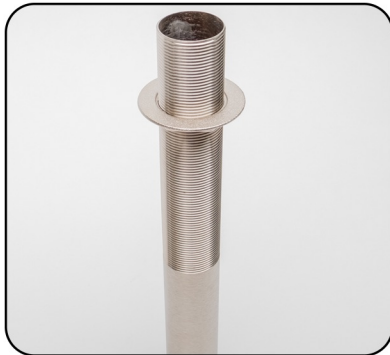
**TBD473**

**Group 1 - \$110**

**Group 2 - \$139**

**Group 3 - \$160**

**Group 4 - \$199**



## 10 INCH LAVATORY DRAIN TAILPIECE WITHOUT OVERFLOW HOLES.

5-1/2 inch of Thread

Designed for Thick Countertops and/or Sinks

Works with TBD401, TBD4011, TBD403, TBD405,  
TBD4031, TBD4035, TBD411 and TBD4111

Solid Brass Construction

**TBD475**

**Group 1 - \$110**

**Group 2 - \$139**

**Group 3 - \$160**

**Group 4 - \$199**



## LIFT & TURN DRAIN ASSEMBLY WITH OVERFLOW HOLES.

Fits 1-1/2 inch Opening

1-1/4 inch Diameter Tailpiece Connection

Solid Brass Construction

IAPMO / UPC LISTED

**COMPLETELY PLATED FOR EXPOSED INSTALLATION**

**TBD400**

**Group 1 - \$159**

**Group 2 - \$179**

**Group 3 - \$195**

**Group 4 - \$244**



## LIFT & TURN DRAIN ASSEMBLY WITH OVERFLOW HOLES.

Fits 1-1/2 inch Opening

1-1/4 inch Diameter Tailpiece Connection

Solid Brass Construction

IAPMO / UPC LISTED

EXPOSED PARTS PLATED

**TBD4001**

**Group 1 - \$123**

**Group 2 - \$139**



## LIFT & TURN DRAIN ASSEMBLY WITHOUT OVERFLOW HOLES.

Fits 1-1/2 inch Opening

1-1/4 inch Diameter Tailpiece Connection

Solid Brass Construction

IAPMO / UPC LISTED

**COMPLETELY PLATED FOR EXPOSED INSTALLATION**

**TBD401**

**Group 1 - \$159**

**Group 2 - \$179**

**Group 3 - \$195**

**Group 4 - \$244**



# Trim By Design



## LIFT & TURN DRAIN ASSEMBLY WITHOUT OVERFLOW HOLES.

Fits 1-1/2 inch Opening  
1-1/4 inch Diameter Tailpiece Connection  
Solid Brass Construction  
IAPMO / UPC LISTED  
EXPOSED PARTS PLATED

**TBD4011**    **Group 1 - \$123**  
**Group 2 - \$139**



## 7-HOLE FLAT GRID STRAINER DRAIN ASSEMBLY WITH OVERFLOW HOLES.

Fits 1-1/2 inch Opening  
1-1/4 inch Diameter Tailpiece Connection  
Solid Brass Construction  
IAPMO / UPC LISTED  
**COMPLETELY PLATED FOR EXPOSED INSTALLATION**

**TBD402**    **Group 1 - \$129**  
**Group 2 - \$145**  
**Group 3 - \$199**  
**Group 4 - \$249**



## 7-HOLE FLAT GRID STRAINER DRAIN ASSEMBLY WITHOUT OVERFLOW HOLES.

Fits 1-1/2 inch Opening  
1-1/4 inch Diameter Tailpiece Connection  
Solid Brass Construction  
IAPMO / UPC LISTED  
**COMPLETELY PLATED FOR EXPOSED INSTALLATION**

**TBD403**    **Group 1 - \$129**  
**Group 2 - \$145**  
**Group 3 - \$199**  
**Group 4 - \$249**



## SLOTTED FLAT GRID STRAINER DRAIN ASSEMBLY WITH OVERFLOW HOLES.

Fits 1-1/2 inch Opening  
1-1/4 inch Diameter Tailpiece Connection  
Solid Brass Construction  
IAPMO / UPC LISTED  
**COMPLETELY PLATED FOR EXPOSED INSTALLATION**

**TBD4021**    **Group 1 - \$129**  
**Group 2 - \$145**  
**Group 3 - \$199**  
**Group 4 - \$249**



## SLOTTED FLAT GRID STRAINER DRAIN ASSEMBLY WITHOUT OVERFLOW HOLES.

Fits 1-1/2 inch Opening  
1-1/4 inch Diameter Tailpiece Connection  
Solid Brass Construction  
IAPMO / UPC LISTED  
**COMPLETELY PLATED FOR EXPOSED INSTALLATION**

**TBD4031**    **Group 1 - \$129**  
**Group 2 - \$145**  
**Group 3 - \$199**  
**Group 4 - \$249**



# Trim By Design



## CHANNEL FLAT GRID STRAINER DRAIN ASSEMBLY WITH OVERFLOW HOLES.

Fits 1-1/2 inch Opening  
1-1/4 inch Diameter Tailpiece Connection  
Solid Brass Construction  
IAPMO / UPC LISTED

**COMPLETELY PLATED FOR EXPOSED INSTALLATION**

**TBD4033**

**Group 1 - \$129**  
**Group 2 - \$145**  
**Group 3 - \$199**  
**Group 4 - \$249**



## CHANNEL FLAT GRID STRAINER DRAIN ASSEMBLY WITHOUT OVERFLOW HOLES.

Fits 1-1/2 inch Opening  
1-1/4 inch Diameter Tailpiece Connection  
Solid Brass Construction  
IAPMO / UPC LISTED

**COMPLETELY PLATED FOR EXPOSED INSTALLATION**

**TBD4035**

**Group 1 - \$129**  
**Group 2 - \$145**  
**Group 3 - \$199**  
**Group 4 - \$249**



## DAISY GRID STRAINER DRAIN ASSEMBLY WITH OVERFLOW HOLES.

Fits 1-1/2 inch Opening  
1-1/4 inch Diameter Tailpiece Connection  
Solid Brass Construction  
IAPMO / UPC LISTED

**COMPLETELY PLATED FOR EXPOSED INSTALLATION**

**TBD404**

**Group 1 - \$129**  
**Group 2 - \$145**  
**Group 3 - \$199**  
**Group 4 - \$249**



## DAISY GRID STRAINER DRAIN ASSEMBLY WITHOUT OVERFLOW HOLES.

Fits 1-1/2 inch Opening  
1-1/4 inch Diameter Tailpiece Connection  
Solid Brass Construction  
IAPMO / UPC LISTED

**COMPLETELY PLATED FOR EXPOSED INSTALLATION**

**TBD405**

**Group 1 - \$129**  
**Group 2 - \$145**  
**Group 3 - \$199**  
**Group 4 - \$249**



## 19-HOLE FLAT GRID STRAINER DRAIN ASSEMBLY WITH OVERFLOW HOLES.

Fits 1-1/2 inch Opening  
1-1/4 inch Diameter Tailpiece Connection  
Solid Brass Construction  
IAPMO / UPC LISTED

**COMPLETELY PLATED FOR EXPOSED INSTALLATION**

**TBD410**

**Group 1 - \$129**  
**Group 2 - \$145**  
**Group 3 - \$199**  
**Group 4 - \$249**

# Trim By Design



## 19-HOLE FLAT GRID STRAINER DRAIN ASSEMBLY WITH OVERFLOW HOLES.

Fits 1-1/2 inch Opening  
1-1/4 inch Diameter Tailpiece Connection  
Solid Brass Construction  
IAPMO / UPC LISTED  
EXPOSED PARTS PLATED

TBD4101

Group 1 - \$99  
Group 2 - \$125



## 19-HOLE FLAT GRID STRAINER DRAIN ASSEMBLY WITHOUT OVERFLOW HOLES.

Fits 1-1/2 inch Opening  
1-1/4 inch Diameter Tailpiece Connection  
Solid Brass Construction  
IAPMO / UPC LISTED  
**COMPLETELY PLATED FOR EXPOSED INSTALLATION**

TBD411

Group 1 - \$129  
Group 2 - \$145  
Group 3 - \$199  
Group 4 - \$249



## 19-HOLE FLAT GRID STRAINER DRAIN ASSEMBLY WITHOUT OVERFLOW HOLES.

Fits 1-1/2 inch Opening  
1-1/4 inch Diameter Tailpiece Connection  
Solid Brass Construction  
IAPMO / UPC LISTED  
EXPOSED PARTS PLATED

TBD4111

Group 1 - \$99  
Group 2 - \$125



## POP-UP LAVATORY DRAIN ASSEMBLY WITH OVERFLOW HOLES.

Fits 1-1/2 inch Opening  
1-1/4 inch Diameter Tailpiece Connection  
Solid Brass Construction (Hardware not Finished)  
**COMPLETELY PLATED FOR EXPOSED INSTALLATION**

TBD406

Group 1 - \$199  
Group 2 - \$225  
Group 3 - \$259  
Group 4 - \$324



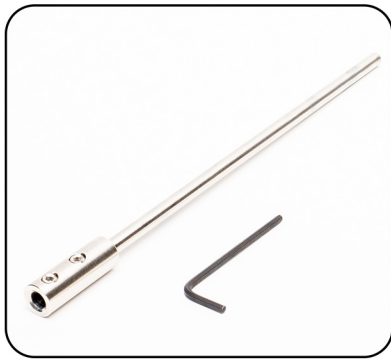
## POP-UP LAVATORY DRAIN ASSEMBLY WITHOUT OVERFLOW HOLES.

Fits 1-1/2 inch Opening  
1-1/4 inch Diameter Tailpiece Connection  
Solid Brass Construction (Hardware not Finished)  
**COMPLETELY PLATED FOR EXPOSED INSTALLATION**

TBD407

Group 1 - \$199  
Group 2 - \$225  
Group 3 - \$259  
Group 4 - \$324

# Trim By Design



## POP-UP LIFT ROD EXTENSION.

Fits Pop-Up Rod or Horizontal Lift Rod for  
Pop-Up Lavatory Assembly  
Chrome Plated Brass

TBD4065

\$29



## HAND OPERATED POP-UP LAVATORY DRAIN ASSEMBLY WITH OVERFLOW HOLES.

Fits 1-1/2 inch Opening  
1-1/4 inch Diameter Tailpiece Connection  
Solid Brass Construction

**COMPLETELY PLATED FOR EXPOSED INSTALLATION**

TBD408

Group 1 - \$209

Group 2 - \$235

Group 3 - \$269

Group 4 - \$334



## HAND OPERATED POP-UP LAVATORY DRAIN ASSEMBLY WITHOUT OVERFLOW HOLES.

Fits 1-1/2 inch Opening  
1-1/4 inch Diameter Tailpiece Connection  
Solid Brass Construction

**COMPLETELY PLATED FOR EXPOSED INSTALLATION**

TBD409

Group 1 - \$209

Group 2 - \$235

Group 3 - \$269

Group 4 - \$334



## 19-HOLE FLAT OFFSET GRID STRAINER DRAIN ASSEMBLY WITH OVERFLOW HOLES.

Fits 1-1/2 inch Opening  
1-1/4 inch Diameter Tailpiece Connection  
Solid Brass Construction

**COMPLETELY PLATED FOR EXPOSED INSTALLATION**

TBD421

Group 1 - \$149

Group 2 - \$273

Group 3 - \$323



## 19-HOLE FLAT OFFSET GRID STRAINER DRAIN ASSEMBLY WITHOUT OVERFLOW HOLES.

Fits 1-1/2 inch Opening  
1-1/4 inch Diameter Tailpiece Connection  
Solid Brass Construction

**COMPLETELY PLATED FOR EXPOSED INSTALLATION**

TBD4211

Group 1 - \$149

Group 2 - \$273

Group 3 - \$323



# Trim By Design



## **SWIVEL DRAIN ASSEMBLY WITH OVERFLOW HOLES.**

Fits 1-1/2 inch Opening  
1-1/4 inch Diameter Tailpiece Connection  
Solid Brass Construction  
IAPMO / UPC LISTED

**COMPLETELY PLATED FOR EXPOSED INSTALLATION**

**TBD412**      **Group 1 - \$119**  
**Group 2 - \$140**  
**Group 3 - \$172**



## **SWIVEL DRAIN ASSEMBLY WITHOUT OVERFLOW HOLES.**

Fits 1-1/2 inch Opening  
1-1/4 inch Diameter Tailpiece Connection  
Solid Brass Construction  
IAPMO / UPC LISTED

**COMPLETELY PLATED FOR EXPOSED INSTALLATION**

**TBD413**      **Group 1 - \$119**  
**Group 2 - \$140**  
**Group 3 - \$172**



## **FIXED DOME DRAIN ASSEMBLY WITHOUT OVERFLOW HOLES.**

Fits 1-1/2 inch Opening  
2-3/4 inch Diameter Umbrella Dome Top  
1-1/4 inch Diameter Tailpiece Connection  
Solid Brass Construction  
IAPMO / UPC LISTED

**COMPLETELY PLATED FOR EXPOSED INSTALLATION**

**TBD414**      **Group 1 - \$169**  
**Group 2 - \$189**  
**Group 3 - \$229**  
**Group 4 - \$286**



## **DAISY GRID DRAIN STRAINER ASSEMBLY WITHOUT OVERFLOW HOLES.**

Fits 1-3/4 inch Opening  
2-1/2 inch Daisy Drain Plug  
1-1/4 inch Diameter Tailpiece Connection  
Solid Brass Construction

**COMPLETELY PLATED FOR EXPOSED INSTALLATION**

**TBD415**      **Group 1 - \$169**  
**Group 2 - \$189**  
**Group 3 - \$229**  
**Group 4 - \$286**



## **TOUCH SEAL LAVATORY DRAIN ASSEMBLY WITH OVERFLOW HOLES.**

Fits 1-1/2 inch Opening  
4 inch Body for Thick Counter / Sink Installations  
1-1/4 inch Diameter Tailpiece Connection  
Solid Brass Construction

**COMPLETELY PLATED FOR EXPOSED INSTALLATION**

**TBD4161**      **Group 1 - \$169**  
**Group 2 - \$189**  
**Group 3 - \$229**  
**Group 4 - \$286**



# Trim By Design



## **TOUCH SEAL LAVATORY DRAIN ASSEMBLY WITHOUT OVERFLOW HOLES.**

Fits 1-1/2 inch Opening  
4 inch Body for Thick Counter / Sink Installations  
1-1/4 inch Diameter Tailpiece Connection  
Solid Brass Construction

**COMPLETELY PLATED FOR EXPOSED INSTALLATION**

**TBD4162**

**Group 1 - \$169**  
**Group 2 - \$189**  
**Group 3 - \$229**  
**Group 4 - \$286**



## **TOUCH SEAL DOME DRAIN ASSEMBLY WITH OVERFLOW HOLES.**

Fits 1-1/2 inch Opening  
2-1/2 inch Diameter Dome Top  
1-1/4 inch Diameter Tailpiece Connection  
Solid Brass Construction  
IAPMO / UPC LISTED

**COMPLETELY PLATED FOR EXPOSED INSTALLATION**

**TBD417**

**Group 1 - \$169**  
**Group 2 - \$189**  
**Group 3 - \$229**  
**Group 4 - \$286**



## **TOUCH SEAL DOME DRAIN ASSEMBLY WITHOUT OVERFLOW HOLES.**

Fits 1-1/2 inch Opening  
2-1/2 inch Diameter Dome Top  
1-1/4 inch Diameter Tailpiece Connection  
Solid Brass Construction  
IAPMO / UPC LISTED

**COMPLETELY PLATED FOR EXPOSED INSTALLATION**

**TBD418**

**Group 1 - \$169**  
**Group 2 - \$189**  
**Group 3 - \$229**  
**Group 4 - \$286**



## **SQUARE FIXED DOME DRAIN ASSEMBLY WITHOUT OVERFLOW HOLES.**

Fits 1-1/2 inch Opening  
2-1/2 inch Square Top  
1-1/4 inch Diameter Tailpiece  
Solid Brass Construction  
IAPMO / UPC LISTED

**COMPLETELY PLATED FOR EXPOSED INSTALLATION**

**TBD419**

**Group 1 - \$119**  
**Group 2 - \$140**  
**Group 3 - \$172**

# Trim By Design



## **MOUNTING SPACER RING FOR THIN WALL SINKS.**

Allows Lavatory Drains with Overflow Holes to be  
Used with Thin Wall Sinks or Sinks Without Overflow Holes  
Includes Mack Basin Gasket  
Solid Brass Construction

**TBD450**

**Group 1 - \$50**  
**Group 2 - \$64**  
**Group 3 - \$86**  
**Group 4 - \$108**



## **MOUNTING RING FOR VESSEL SINKS.**

Designed to Work for Above Counter  
Vessel Sinks without Overflow  
Provides Stable Base for Curved Vessel Sinks  
Includes 2 Rubber Gaskets  
Solid Brass Construction

**TBD490**

**Group 1 - \$63**  
**Group 2 - \$115**  
**Group 3 - \$139**  
**Group 4 - \$174**



## **1-1/2 INCH O.D. X 1-1/4 INCH O.D. X 12 INCH REDUCING FLANGED TAILPIECE.**

Brass Nut  
17-Gauge Brass  
Solid Brass Construction

**TBD463**

**Group 1 - \$49**  
**Group 2 - \$119**  
**Group 3 - \$145**  
**Group 4 - \$181**



## **1-1/4 INCH O.D. X 12 INCH THREAD BOTH ENDS TAILPIECE.**

17-Gauge Brass  
Solid Brass Construction

**TBD467**

**Group 1 - \$109**  
**Group 2 - \$125**  
**Group 3 - \$146**  
**Group 4 - \$183**



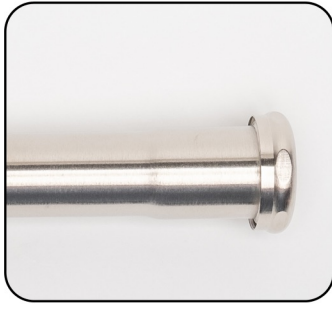
## **1-1/4 INCH O.D. X 16 INCH THREAD BOTH ENDS TAILPIECE.**

17-Gauge Brass  
Solid Brass Construction

**TBD4671**

**Group 1 - \$155**  
**Group 2 - \$169**  
**Group 3 - \$196**  
**Group 4 - \$245**

# Trim By Design



**1-1/4 INCH O.D. X 8 INCH**  
SLIP JOINT EXTENSION TUBE.  
Brass Nut  
17-Gauge Brass  
Solid Brass Construction

**TBD466**  
**Group 1 - \$99**  
**Group 2 - \$110**  
**Group 3 - \$129**



**1-1/4 INCH O.D. X 12 INCH**  
SLIP JOINT EXTENSION TUBE.  
Brass Nut  
17-Gauge Brass  
Solid Brass Construction

**TBD468**  
**Group 1 - \$105**  
**Group 2 - \$129**  
**Group 3 - \$159**  
**Group 4 - \$199**



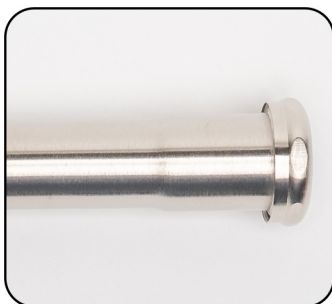
**1-1/4 INCH O.D. X 16 INCH**  
SLIP JOINT EXTENSION TUBE.  
Brass Nut  
17-Gauge Brass  
Solid Brass Construction

**TBD4681**  
**Group 1 - \$163**  
**Group 2 - \$199**  
**Group 3 - \$209**  
**Group 4 - \$261**



**1-1/2 INCH O.D. X 12 INCH**  
SLIP JOINT EXTENSION TUBE.  
Brass Nut  
17-Gauge Brass  
Solid Brass Construction

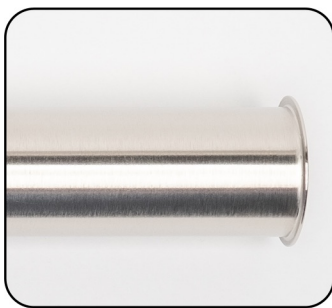
**TBD470**  
**Group 1 - \$129**  
**Group 2 - \$145**  
**Group 3 - \$168**  
**Group 4 - \$210**



**1-1/2 INCH O.D. X 16 INCH**  
SLIP JOINT EXTENSION TUBE.  
Brass Nut  
17-Gauge Brass  
Solid Brass Construction

**TBD4701**  
**Group 1 - \$189**  
**Group 2 - \$210**  
**Group 3 - \$229**  
**Group 4 - \$286**

# Trim By Design



**1-1/2 INCH O.D. X 12 INCH  
FLANGED TAILPIECE.**  
17-Gauge Brass  
Solid Brass Construction

**TBD471**      **Group 1 - \$106**  
**Group 2 - \$125**  
**Group 3 - \$139**  
**Group 4 - \$174**



**1-1/4 INCH O.D. X 12 INCH  
FLANGED TAILPIECE.**  
17-Gauge Brass  
Solid Brass Construction

**TBD472**      **Group 1 - \$99**  
**Group 2 - \$129**  
**Group 3 - \$152**  
**Group 4 - \$190**



**1-1/4 INCH O.D. X 8 INCH Y-BRANCH  
SLIP JOINT EXTENSION TUBE.**  
7/8 inch O.D. (3/4 inch Copper) Y-Branch Inlet  
Brass Nut  
17-Gauge Brass  
Solid Brass Construction

**TBD477**      **Group 1 - \$99**  
**Group 2 - \$129**  
**Group 3 - \$153**  
**Group 4 - \$192**



**1-1/2 INCH O.D. X 8 INCH Y-BRANCH  
SLIP JOINT EXTENSION TUBE.**  
7/8 inch O.D. (3/4 inch Copper) Y-Branch Inlet  
Brass Nut  
17-Gauge Brass  
Solid Brass Construction

**TBD478**      **Group 1 - \$119**  
**Group 2 - \$139**  
**Group 3 - \$155**  
**Group 4 - \$194**



**1-1/4 INCH O.D. BRASS SLIP JOINT  
DRAINAGE COUPLING.**  
Designed for Tubular Drainage Applications  
Brass Nuts  
Solid Brass Construction

**TBD480**      **Group 1 - \$94**  
**Group 2 - \$125**  
**Group 3 - \$146**  
**Group 4 - \$183**



# Trim By Design



**1-1/4 INCH O.D. BRASS SLIP JOINT 45 DEGREE  
DRAINAGE ELBOW.**

Designed for Tubular Drainage Applications  
Brass Nuts  
Solid Brass Construction

**TBD482**

**Group 1 - \$94**  
**Group 2 - \$125**  
**Group 3 - \$146**  
**Group 4 - \$183**



**1-1/4 INCH O.D. BRASS SLIP JOINT 90 DEGREE  
DRAINAGE ELBOW.**

Designed for Tubular Drainage Applications  
Brass Nuts  
Solid Brass Construction

**TBD484**

**Group 1 - \$94**  
**Group 2 - \$125**  
**Group 3 - \$146**  
**Group 4 - \$183**



**1-1/2 INCH O.D. BRASS SLIP JOINT  
DRAINAGE COUPLING.**

Designed for Tubular Drainage Applications  
Brass Nuts  
Solid Brass Construction

**TBD485**

**Group 1 - \$94**  
**Group 2 - \$125**  
**Group 3 - \$146**  
**Group 4 - \$183**



**1-1/2 INCH O.D. BRASS SLIP JOINT 45 DEGREE  
DRAINAGE ELBOW.**

Designed for Tubular Drainage Applications  
Brass Nuts  
Solid Brass Construction

**TBD487**

**Group 1 - \$94**  
**Group 2 - \$125**  
**Group 3 - \$146**  
**Group 4 - \$183**



**1-1/2 INCH O.D. BRASS SLIP JOINT 90 DEGREE  
DRAINAGE ELBOW.**

Designed for Tubular Drainage Applications  
Brass Nuts  
Solid Brass Construction

**TBD489**

**Group 1 - \$94**  
**Group 2 - \$125**  
**Group 3 - \$146**  
**Group 4 - \$183**

# Trim By Design


**1-1/4 INCH O.D. X 1-1/4 INCH O.D. P-TRAP KIT WITH FLANGE. TBD430**

11-1/2 inch Overall Length End-To-End

Includes Brass High Box Flange

17-Gauge Brass with Brass Nuts

Solid Brass Construction

**Group 1 - \$187**

**Group 2 - \$294**

**Group 3 - \$320**

**Group 4 - \$401**


**1-1/4 INCH O.D. X 1-1/4 INCH O.D. P-TRAP LESS FLANGE. TBD4301**

11-1/2 inch Overall Length End-To-End

17-Gauge Brass with Brass Nuts

Solid Brass Construction

**Group 1 - \$125**

**Group 2 - \$225**

**Group 3 - \$245**

**Group 4 - \$307**


**1-1/4 INCH O.D. X 1-1/4 INCH O.D. P-TRAP KIT WITH FLANGE. TBD430-18**

18 inch Overall Length End-To-End

Includes Brass High Box Flange

17-Gauge Brass with Brass Nuts

Solid Brass Construction

**Group 1 - \$299**

**Group 2 - \$324**

**Group 3 - \$350**

**Group 4 - \$438**


**1-1/4 INCH O.D. X 1-1/4 INCH O.D. P-TRAP KIT WITH FLANGE. TBD430-24**

24 inch Overall Length End-To-End

Includes Brass High Box Flange

17-Gauge Brass with Brass Nuts

Solid Brass Construction

**Group 1 - \$339**

**Group 2 - \$359**

**Group 3 - \$389**

**Group 4 - \$486**


**1-1/4 INCH O.D. X 1-1/2 INCH O.D. P-TRAP KIT WITH FLANGE. TBD431**

12-1/2 inch Overall Length End-To-End

Includes Brass High Box Flange

17-Gauge Brass with Brass Nuts

Solid Brass Construction

**Group 1 - \$211**

**Group 2 - \$298**

**Group 3 - \$344**

**Group 4 - \$430**


**1-1/4 INCH O.D. X 1-1/2 INCH O.D. P-TRAP LESS FLANGE. TBD4311**

12-1/2 inch Overall Length End-to-End

17-Gauge Brass with Brass Nuts

Solid Brass Construction

**Group 1 - \$149**

**Group 2 - \$229**

**Group 3 - \$269**

**Group 4 - \$336**

# Trim By Design



**1-1/4 INCH O.D. X 1-1/2 INCH O.D. P-TRAP KIT WITH FLANGE. TBD431-19**  
 19 inch Overall Length End-to-End  
 Includes Brass High Box Flange  
 17-Gauge Brass with Brass Nuts  
 Solid Brass Construction

**Group 1 - \$276**  
**Group 2 - \$338**  
**Group 3 - \$377**  
**Group 4 - \$472**



**1-1/4 INCH O.D. X 1-1/2 INCH O.D. P-TRAP KIT WITH FLANGE. TBD431-24**  
 24 inch Overall Length End-to-End  
 Includes Brass High Box Flange  
 17-Gauge Brass with Brass Nuts  
 Solid Brass Construction

**Group 1 - \$349**  
**Group 2 - \$369**  
**Group 3 - \$399**  
**Group 4 - \$499**



**1-1/2 INCH O.D. X 1-1/2 INCH O.D. P-TRAP KIT WITH FLANGE. TBD432**  
 12-1/2 inch Overall Length End-to-End  
 Includes Brass High Box Flange  
 17-Gauge Brass with Brass Nuts  
 Solid Brass Construction

**Group 1 - \$211**  
**Group 2 - \$298**  
**Group 3 - \$344**  
**Group 4 - \$430**



**1-1/2 INCH O.D. X 1-1/2 INCH O.D. P-TRAP LESS FLANGE. TBD4321**  
 12-1/2 inch Overall Length End-to-End  
 17-Gauge Brass with Brass Nuts  
 Solid Brass Construction

**Group 1 - \$149**  
**Group 2 - \$229**  
**Group 3 - \$269**  
**Group 4 - \$336**



**1-1/2 INCH O.D. X 1-1/2 INCH O.D. P-TRAP KIT WITH FLANGE. TBD432-19**  
 19 inch Overall Length End-to-End  
 Includes Brass High Box Flange  
 17-Gauge Brass with Brass Nuts  
 Solid Brass Construction

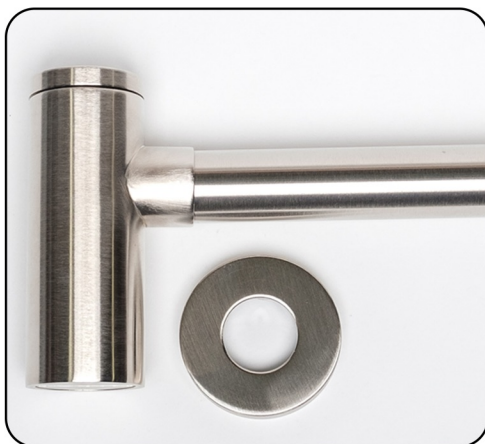
**Group 1 - \$276**  
**Group 2 - \$338**  
**Group 3 - \$377**  
**Group 4 - \$472**



**1-1/2 INCH O.D. X 1-1/2 INCH O.D. P-TRAP KIT WITH FLANGE. TBD432-24**  
 24 inch Overall Length End-to-End  
 Includes Brass High Box Flange  
 17-Gauge Brass with Brass Nuts  
 Solid Brass Construction

**Group 1 - \$349**  
**Group 2 - \$369**  
**Group 3 - \$399**  
**Group 4 - \$499**

## Trim By Design



**1-1/4 INCH O.D. X 1-1/4 INCH O.D. CYLINDER  
STYLE TRAP.**

18-1/2 inch Overall Length End-To-End  
IAPMO / UPC LISTED  
Solid Brass Construction

**TBD440**

**Group 1 - \$439**  
**Group 2 - \$499**  
**Group 3 - \$579**  
**Group 4 - \$725**



**1-1/4 INCH O.D. CONTEMPORARY FLAT PATTERN  
FLANGE.**

1-1/4 in. I.D. X 2-3/4 in. O.D. X 3/8 in. HT.  
Solid Brass Construction

**TBD462**

**Group 1 - \$74**  
**Group 2 - \$82**  
**Group 3 - \$86**  
**Group 4 - \$108**



**1-1/2 INCH I.P.S BOX FLANGE.**

1-7/8 in. I.D. X 3 in. O.D. X 1-11/16 in. HT.  
Solid Brass Construction

**TBD454**

**Group 1 - \$74**  
**Group 2 - \$82**  
**Group 3 - \$86**  
**Group 4 - \$108**

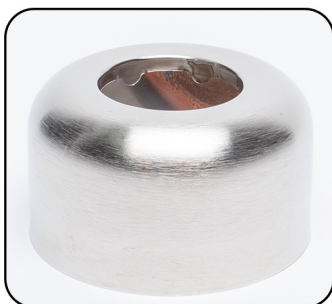


**1-1/4 INCH O.D. BOX FLANGE.**

1-1/4 in. I.D. X 3 in. O.D. X 1-11/16 in. HT.  
Solid Brass Construction

**TBD455**

**Group 1 - \$62**  
**Group 2 - \$69**  
**Group 3 - \$75**  
**Group 4 - \$94**



**1-1/2 INCH O.D. BOX FLANGE.**

1-1/2 in. I.D. X 3 in. O.D. X 1-11/16 in. HT.  
Solid Brass Construction

**TBD456**

**Group 1 - \$62**  
**Group 2 - \$69**  
**Group 3 - \$75**  
**Group 4 - \$94**



# Trim By Design



## 1-1/4 INCH O.D. BELL FLANGE.

1-1/4 in. I.D. X 3 in. O.D. X 1-3/8 in. HT.

Solid Brass Construction

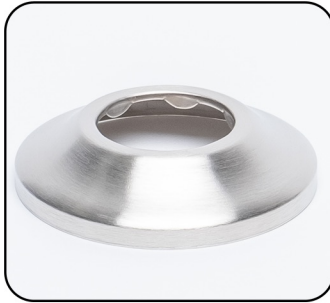
**TBD457**

**Group 1 - \$62**

**Group 2 - \$69**

**Group 3 - \$75**

**Group 4 - \$94**



## 1-1/4 INCH O.D. SURE GRIP FLANGE.

1-1/4 in. I.D. X 2-3/4 in. O.D. X 11/16 in. HT.

Solid Brass Construction

**TBD459**

**Group 1 - \$62**

**Group 2 - \$69**

**Group 3 - \$75**

**Group 4 - \$94**



## 1-1/2 INCH O.D. SURE GRIP FLANGE.

1-1/2 in. I.D. X 2-3/4 in. O.D. X 11/16 in. HT.

Solid Brass Construction

**TBD460**

**Group 1 - \$62**

**Group 2 - \$69**

**Group 3 - \$75**

**Group 4 - \$94**



## 1-1/2 INCH I.P.S. SURE GRIP FLANGE.

1-7/8 in. I.D. X 3 in. O.D. X 7/16 in. HT.

Solid Brass Construction

**TBD461**

**Group 1 - \$62**

**Group 2 - \$69**

**Group 3 - \$75**

**Group 4 - \$94**



## 1-1/4 INCH SLIP JOINT NUT.

Solid Brass Construction

**TBD650**

**Group 1 - \$35**

**Group 2 - \$39**

**Group 3 - \$45**

**Group 4 - \$68**



## 1-1/2 INCH SLIP JOINT NUT.

Solid Brass Construction

**TBD652**

**Group 1 - \$35**

**Group 2 - \$39**

**Group 3 - \$45**

**Group 4 - \$68**

# Trim By Design


**1/4-TURN ANGLE STOP VALVE WITH OVAL HANDLE.**

1/2 in. Female Inlet X 3/8 in. O.D. Compression Outlet  
 1/4-Turn Ceramic Disc Cartridge  
 Temperature Rating: 40° - 140° F  
 Pressure Rating: 125 PSI Maximum  
 Lead Free Brass Construction

**TBD501CQT**    **Group 1** - \$175  
**Group 2** - \$189  
**Group 3** - \$263  
**Group 4** - \$329


**1/4-TURN ANGLE STOP VALVE WITH LEVER HANDLE.**

1/2 in. Female Inlet X 3/8 in. O.D. Compression Outlet  
 1/4-Turn Ceramic Disc Cartridge  
 Temperature Rating: 40° - 140° F  
 Pressure Rating: 125 PSI Maximum  
 Lead Free Brass Construction

**TBD501CQTL**    **Group 1** - \$194  
**Group 2** - \$225  
**Group 3** - \$295  
**Group 4** - \$369


**1/4-TURN ANGLE STOP VALVE WITH CROSS HANDLE.**

1/2 in. Female Inlet X 3/8 in. O.D. Compression Outlet  
 1/4-Turn Ceramic Disc Cartridge  
 Temperature Rating: 40° - 140° F  
 Pressure Rating: 125 PSI Maximum  
 Lead Free Brass Construction

**TBD501CQTX**    **Group 1** - \$194  
**Group 2** - \$225  
**Group 3** - \$295  
**Group 4** - \$369


**1/4-TURN ANGLE STOP VALVE WITH PORCELAIN INSERT CROSS HANDLE.**

1/2 in. Female Inlet X 3/8 in. O.D. Compression Outlet  
 1/4-Turn Ceramic Disc Cartridge  
 Supplied with "PLAIN" Porcelain Insert  
 Temperature Rating: 40° - 140° F  
 Pressure Rating: 125 PSI Maximum  
 Lead Free Brass Construction

**TBD501CQTX-2**    **Group 1** - \$216  
**Group 2** - \$250  
**Group 3** - \$328  
**Group 4** - \$410


**1/4-TURN ANGLE STOP VALVE WITH OVAL HANDLE.**

1/2 in. Nom. Compression Inlet X 3/8 in. O.D. Compression Outlet  
 For 1/2 inch Copper Pipe  
 1/4-Turn Ceramic Disc Cartridge  
 Temperature Rating: 40° - 140° F  
 Pressure Rating: 125 PSI Maximum  
 Lead Free Brass Construction

**TBD503CQT**    **Group 1** - \$175  
**Group 2** - \$189  
**Group 3** - \$263  
**Group 4** - \$329


**1/4-TURN ANGLE STOP VALVE WITH LEVER HANDLE.**

1/2 in. Nom. Compression Inlet X 3/8 in. O.D. Compression Outlet  
 For 1/2 inch Copper Pipe  
 1/4-Turn Ceramic Disc Cartridge  
 Temperature Rating: 40° - 140° F  
 Pressure Rating: 125 PSI Maximum  
 Lead Free Brass Construction

**TBD503CQTL**    **Group 1** - \$194  
**Group 2** - \$225  
**Group 3** - \$295  
**Group 4** - \$369

# Trim By Design



## 1/4-TURN ANGLE STOP VALVE WITH CROSS HANDLE.

**TBD503CQTX**

1/2 in. Nom. Compression Inlet X 3/8 in. O.D. Compression Outlet  
For 1/2 inch Copper Pipe  
1/4-Turn Ceramic Disc Cartridge  
Temperature Rating: 40° - 140° F  
Pressure Rating: 125 PSI Maximum  
Lead Free Brass Construction

**Group 1** - \$194  
**Group 2** - \$225  
**Group 3** - \$295  
**Group 4** - \$369



## 1/4-TURN ANGLE STOP VALVE WITH PORCELAIN INSERT CROSS HANDLE.

**TBD503CQTX-2**

1/2 in. Nom. Compression Inlet X 3/8 in. O.D. Compression Outlet  
For 1/2 inch Copper Pipe  
1/4-Turn Ceramic Disc Cartridge  
Supplied with "PLAIN" Porcelain Insert  
Temperature Rating: 40° - 140° F  
Pressure Rating: 125 PSI Maximum  
Lead Free Brass Construction

**Group 1** - \$216  
**Group 2** - \$250  
**Group 3** - \$328  
**Group 4** - \$410



## 1/4-TURN ANGLE STOP VALVE WITH OVAL HANDLE.

**TBD504CQT**

1/2 in. Nom. Compression Inlet X 1/2 in. O.D. Compression Outlet  
For 1/2 inch Copper Pipe  
1/4-Turn Ceramic Disc Cartridge  
Temperature Rating: 40° - 140° F  
Pressure Rating: 125 PSI Maximum  
Lead Free Brass Construction

**Group 1** - \$197  
**Group 2** - \$215  
**Group 3** - \$263  
**Group 4** - \$329



## 1/4-TURN ANGLE STOP VALVE WITH LEVER HANDLE.

**TBD504CQTL**

1/2 in. Nom. Compression Inlet X 1/2 in. O.D. Compression Outlet  
For 1/2 inch Copper Pipe  
1/4-Turn Ceramic Disc Cartridge  
Temperature Rating: 40° - 140° F  
Pressure Rating: 125 PSI Maximum  
Lead Free Brass Construction

**Group 1** - \$225  
**Group 2** - \$249  
**Group 3** - \$292  
**Group 4** - \$365



## 1/4-TURN ANGLE STOP VALVE WITH CROSS HANDLE.

**TBD504CQTX**

1/2 in. Nom. Compression Inlet X 1/2 in. O.D. Compression Outlet  
For 1/2 inch Copper Pipe  
1/4-Turn Ceramic Disc Cartridge  
Temperature Rating: 40° - 140° F  
Pressure Rating: 125 PSI Maximum  
Lead Free Brass Construction

**Group 1** - \$225  
**Group 2** - \$249  
**Group 3** - \$292  
**Group 4** - \$365



## 1/4-TURN ANGLE STOP VALVE WITH PORCELAIN INSERT CROSS HANDLE.

**TBD504CQTX-2**

1/2 in. Nom. Compression Inlet X 1/2 in. O.D. Compression Outlet  
For 1/2 inch Copper Pipe  
1/4-Turn Ceramic Disc Cartridge  
Supplied with "PLAIN" Porcelain Insert  
Temperature Rating: 40° - 140° F  
Pressure Rating: 125 PSI Maximum  
Lead Free Brass Construction

**Group 1** - \$250  
**Group 2** - \$277  
**Group 3** - \$325  
**Group 4** - \$406



# Trim By Design


**1/4-TURN STRAIGHT STOP VALVE WITH OVAL HANDLE.**

1/2 in. Female Inlet X 3/8 in. O.D. Compression Outlet

1/4-Turn Ceramic Disc Cartridge

Temperature Rating: 40° - 140° F

Pressure Rating: 125 PSI Maximum

Lead Free Brass Construction

**TBD510CQT**
**Group 1 - \$175**
**Group 2 - \$219**
**Group 3 - \$255**
**Group 4 - \$319**

**1/4-TURN STRAIGHT STOP VALVE WITH LEVER HANDLE.**

1/2 in. Female Inlet X 3/8 in. O.D. Compression Outlet

1/4-Turn Ceramic Disc Cartridge

Temperature Rating: 40° - 140° F

Pressure Rating: 125 PSI Maximum

Lead Free Brass Construction

**TBD510CQTL**
**Group 1 - \$199**
**Group 2 - \$249**
**Group 3 - \$279**
**Group 4 - \$349**

**1/4-TURN STRAIGHT STOP VALVE WITH CROSS HANDLE.**

1/2 in. Female Inlet X 3/8 in. O.D. Compression Outlet

1/4-Turn Ceramic Disc Cartridge

Temperature Rating: 40° - 140° F

Pressure Rating: 125 PSI Maximum

Lead Free Brass Construction

**TBD510CQTX**
**Group 1 - \$199**
**Group 2 - \$249**
**Group 3 - \$279**
**Group 4 - \$349**

**1/4-TURN STRAIGHT STOP VALVE WITH PORCELAIN INSERT CROSS HANDLE.**

1/2 in. Female Inlet X 3/8 in. O.D. Compression Outlet

1/4-Turn Ceramic Disc Cartridge

Supplied with "PLAIN" Porcelain Insert

Temperature Rating: 40° - 140° F

Pressure Rating: 125 PSI Maximum

Lead Free Brass Construction

**TBD510CQTX-2**
**Group 1 - \$221**
**Group 2 - \$277**
**Group 3 - \$310**
**Group 4 - \$388**

**1/4-TURN STRAIGHT STOP VALVE WITH OVAL HANDLE.**

1/2 in. Nom. Compression Inlet X 3/8 in. O.D. Compression Outlet

For 1/2 inch Copper Pipe

1/4-Turn Ceramic Disc Cartridge

Temperature Rating: 40° - 140° F

Pressure Rating: 125 PSI Maximum

Lead Free Brass Construction

**TBD512CQT**
**Group 1 - \$175**
**Group 2 - \$219**
**Group 3 - \$255**
**Group 4 - \$319**

**1/4-TURN STRAIGHT STOP VALVE WITH LEVER HANDLE.**

1/2 in. Nom. Compression Inlet X 3/8 in. O.D. Compression Outlet

For 1/2 inch Copper Pipe

1/4-Turn Ceramic Disc Cartridge

Temperature Rating: 40° - 140° F

Pressure Rating: 125 PSI Maximum

Lead Free Brass Construction

**TBD512CQTL**
**Group 1 - \$199**
**Group 2 - \$249**
**Group 3 - \$279**
**Group 4 - \$349**



# Trim By Design



## **1/4-TURN STRAIGHT STOP VALVE WITH CROSS HANDLE.**

**TBD512CQTX**

1/2 in. Nom. Compression Inlet X 3/8 in. O.D. Compression Outlet  
For 1/2 inch Copper Pipe  
1/4-Turn Ceramic Disc Cartridge  
Temperature Rating: 40° - 140° F  
Pressure Rating: 125 PSI Maximum  
Lead Free Brass Construction

**Group 1** - \$199  
**Group 2** - \$249  
**Group 3** - \$279  
**Group 4** - \$349



## **1/4-TURN STRAIGHT STOP VALVE WITH PORCELAIN INSERT CROSS HANDLE.**

**TBD512CQTX-2**

1/2 in. Nom. Compression Inlet X 3/8 in. O.D. Compression Outlet  
For 1/2 inch Copper Pipe  
1/4-Turn Ceramic Disc Cartridge  
Supplied with "PLAIN" Porcelain Insert  
Temperature Rating: 40° - 140° F  
Pressure Rating: 125 PSI Maximum  
Lead Free Brass Construction

**Group 1** - \$221  
**Group 2** - \$277  
**Group 3** - \$310  
**Group 4** - \$387



## **MULTI-TURN ANGLE STOP VALVE WITH OVAL HANDLE.**

**TBD501C**

1/2 in. Female Inlet X 3/8 in. O.D. Compression Outlet  
Temperature Rating: 40° - 140° F  
Pressure Rating: 125 PSI Maximum  
Lead Free Brass Construction

**Group 1** - \$128  
**Group 2** - \$159  
**Group 3** - \$190



## **MULTI-TURN ANGLE STOP VALVE WITH CROSS HANDLE.**

**TBD501CX**

1/2 in. Female Inlet X 3/8 in. O.D. Compression Outlet  
Temperature Rating: 40° - 140° F  
Pressure Rating: 125 PSI Maximum  
Lead Free Brass Construction

**Group 1** - \$149  
**Group 2** - \$183  
**Group 3** - \$219



## **MULTI-TURN ANGLE STOP VALVE WITH OVAL HANDLE.**

**TBD502C**

1/2 in. Female Inlet X 1/2 in. O.D. Compression Outlet  
Temperature Rating: 40° - 140° F  
Pressure Rating: 125 PSI Maximum  
Lead Free Brass Construction

**Group 1** - \$125  
**Group 2** - \$156  
**Group 3** - \$181



## **MULTI-TURN ANGLE STOP VALVE WITH CROSS HANDLE.**

**TBD502CX**

1/2 in. Female Inlet X 1/2 in. O.D. Compression Outlet  
Temperature Rating: 40° - 140° F  
Pressure Rating: 125 PSI Maximum  
Lead Free Brass Construction

**Group 1** - \$141  
**Group 2** - \$175  
**Group 3** - \$199

# Trim By Design


**MULTI-TURN ANGLE STOP VALVE WITH OVAL HANDLE.**
**TBD503C**

1/2 in. Nom. Compression Inlet X 3/8 in. O.D. Compression Outlet  
 For 1/2 inch Copper Pipe  
 Temperature Rating: 40° - 140° F  
 Pressure Rating: 125 PSI Maximum  
 Lead Free Brass Construction

**Group 1 - \$128**
**Group 2 - \$159**
**Group 3 - \$190**

**MULTI-TURN ANGLE STOP VALVE WITH CROSS HANDLE.**
**TBD503CX**

1/2 in. Nom. Compression Inlet X 3/8 in. O.D. Compression Outlet  
 For 1/2 inch Copper Pipe  
 Temperature Rating: 40° - 140° F  
 Pressure Rating: 125 PSI Maximum  
 Lead Free Brass Construction

**Group 1 - \$149**
**Group 2 - \$183**
**Group 3 - \$219**

**MULTI-TURN ANGLE STOP VALVE WITH OVAL HANDLE.**
**TBD504C**

1/2 in. Nom. Compression Inlet X 1/2 in. O.D. Compression Outlet  
 For 1/2 inch Copper Pipe  
 Temperature Rating: 40° - 140° F  
 Pressure Rating: 125 PSI Maximum  
 Lead Free Brass Construction

**Group 1 - \$125**
**Group 2 - \$159**
**Group 3 - \$181**

**MULTI-TURN ANGLE STOP VALVE WITH CROSS HANDLE.**
**TBD504CX**

1/2 in. Nom. Compression Inlet X 1/2 in. O.D. Compression Outlet  
 For 1/2 inch Copper Pipe  
 Temperature Rating: 40° - 140° F  
 Pressure Rating: 125 PSI Maximum  
 Lead Free Brass Construction

**Group 1 - \$141**
**Group 2 - \$175**
**Group 3 - \$199**

**MULTI-TURN STRAIGHT STOP VALVE WITH OVAL HANDLE.**
**TBD510C**

1/2 in. Female Inlet X 3/8 in. O.D. Compression Outlet  
 Temperature Rating: 40° - 140° F  
 Pressure Rating: 125 PSI Maximum  
 Lead Free Brass Construction

**Group 1 - \$125**
**Group 2 - \$159**
**Group 3 - \$181**

**MULTI-TURN STRAIGHT STOP VALVE WITH CROSS HANDLE.**
**TBD510CX**

1/2 in. Female Inlet X 3/8 in. O.D. Compression Outlet  
 Temperature Rating: 40° - 140° F  
 Pressure Rating: 125 PSI Maximum  
 Lead Free Brass Construction

**Group 1 - \$141**
**Group 2 - \$175**
**Group 3 - \$199**

# Trim By Design



**MULTI-TURN STRAIGHT STOP VALVE WITH OVAL HANDLE.**

**TBD511C**

1/2 in. Female Inlet X 1/2 in. O.D. Compression Outlet  
Temperature Rating: 40° - 140° F  
Pressure Rating: 125 PSI Maximum  
Lead Free Brass Construction

**Group 1 - \$125**  
**Group 2 - \$156**  
**Group 3 - \$181**



**MULTI-TURN STRAIGHT STOP VALVE WITH CROSS HANDLE.**

**TBD511CX**

1/2 in. Female Inlet X 1/2 in. O.D. Compression Outlet  
Temperature Rating: 40° - 140° F  
Pressure Rating: 125 PSI Maximum  
Lead Free Brass Construction

**Group 1 - \$149**  
**Group 2 - \$169**  
**Group 3 - \$199**



**MULTI-TURN STRAIGHT STOP VALVE WITH OVAL HANDLE.**

**TBD512C**

1/2 in. Nom. Compression Inlet X 3/8 in. O.D. Compression Outlet  
For 1/2 inch Copper Pipe  
Temperature Rating: 40° - 140° F  
Pressure Rating: 125 PSI Maximum  
Lead Free Brass Construction

**Group 1 - \$125**  
**Group 2 - \$156**  
**Group 3 - \$181**



**MULTI-TURN STRAIGHT STOP VALVE WITH CROSS HANDLE.**

**TBD512CX**

1/2 in. Nom. Compression Inlet X 3/8 in. O.D. Compression Outlet  
For 1/2 inch Copper Pipe  
Temperature Rating: 40° - 140° F  
Pressure Rating: 125 PSI Maximum  
Lead Free Brass Construction

**Group 1 - \$149**  
**Group 2 - \$169**  
**Group 3 - \$199**



**MULTI-TURN STRAIGHT STOP VALVE WITH OVAL HANDLE.**

**TBD513C**

1/2 in. Nom. Compression Inlet X 1/2 in. O.D. Compression Outlet  
For 1/2 inch Copper Pipe  
Temperature Rating: 40° - 140° F  
Pressure Rating: 125 PSI Maximum  
Lead Free Brass Construction

**Group 1 - \$125**  
**Group 2 - \$156**  
**Group 3 - \$181**



**MULTI-TURN STRAIGHT STOP VALVE WITH CROSS HANDLE.**

**TBD513CX**

1/2 in. Nom. Compression Inlet X 1/2 in. O.D. Compression Outlet  
For 1/2 inch Copper Pipe  
Temperature Rating: 40° - 140° F  
Pressure Rating: 125 PSI Maximum  
Lead Free Brass Construction

**Group 1 - \$149**  
**Group 2 - \$169**  
**Group 3 - \$199**



# Trim By Design



**1/2 INCH FLAT PATTERN SURE GRIP FLANGE.**

7/8 in. I.D. X 2-5/8 in. O.D. X 5/16 in. HT.

Solid Brass Construction

**TBD200**

**Group 1 - \$19**

**Group 2 - \$27**

**Group 3 - \$32**

**Group 4 - \$40**



**5/8 INCH O.D. (1/2 INCH COMPRESSION) FLAT PATTERN SURE GRIP FLANGE.**

5/8 in. I.D. X 2-5/8 in. O.D. X 5/16 in. HT.

Solid Brass Construction

**TBD5002**

**Group 1 - \$19**

**Group 2 - \$27**

**Group 3 - \$32**

**Group 4 - \$40**



**1/2 INCH I.P.S. BELL FLANGE.**

7/8 in. I.D. X 2-3/8 in. O.D. X 1-1/4 in. HT.

Solid Brass Construction

**TBD5003**

**Group 1 - \$34**

**Group 2 - \$38**

**Group 3 - \$42**

**Group 4 - \$54**



**5/8 INCH O.D. (1/2 INCH COMPRESSION) BELL FLANGE.**

5/8 in. I.D. X 2-3/8 in. O.D. X 1-1/4 in. HT.

Solid Brass Construction

**TBD5005**

**Group 1 - \$34**

**Group 2 - \$38**

**Group 3 - \$42**

**Group 4 - \$54**



# Trim By Design



## **3/8 INCH O.D. X 20 INCH COPPER SEMI RIGID LAVATORY SUPPLY LINE.**

Formed Metal Nosepiece with Brass Insert  
Temperature Rating: 40° - 140° F  
Pressure Rating: 125 PSI Maximum  
Cut-to-Length for Professional Appearance

**TBD521C**    **Group 1 -** \$35  
                 **Group 2 -** \$55  
                 **Group 3 -** \$75  
                 **Group 4 -** \$94



## **1/2 INCH O.D. X 20 INCH COPPER SEMI RIGID LAVATORY SUPPLY LINE.**

Formed Metal Nosepiece with Brass Insert  
Temperature Rating: 40° - 140° F  
Pressure Rating: 125 PSI Maximum  
Cut-to-Length for Professional Appearance

**TBD523C**    **Group 1 -** \$73  
                 **Group 2 -** \$77  
                 **Group 3 -** \$80  
                 **Group 4 -** \$100



## **3/8 INCH O.D. X 20 INCH COPPER SEMI RIGID TOILET SUPPLY LINE.**

Reinforced Flat Nosepiece with Insert  
Temperature Rating: 40° - 140° F  
Pressure Rating: 125 PSI Maximum  
Cut-to-Length for Professional Appearance

**TBD526**    **Group 1 -** \$44  
                 **Group 2 -** \$61  
                 **Group 3 -** \$83  
                 **Group 4 -** \$104



## **1/2 INCH O.D. X 20 INCH COPPER SEMI RIGID TOILET SUPPLY LINE.**

Reinforced Flat Nosepiece with Insert  
Temperature Rating: 40° - 140° F  
Pressure Rating: 125 PSI Maximum  
Cut-to-Length for Professional Appearance

**TBD528**    **Group 1 -** \$89  
                 **Group 2 -** \$95  
                 **Group 3 -** \$105  
                 **Group 4 -** \$131

# Trim By Design


**COMPRESSION TOILET KIT WITH OVAL HANDLE.**
**TBD541QT**

1/2 in. Nom. Compression Inlet X 3/8 in. O.D. Compression Outlet

For 1/2 inch Copper Pipe

1/4-Turn Angle Stop Valve with Oval Handle

20 inch Flat Head Toilet Riser and Flange

Includes (1) Each TBD503CQT, TBD526 and TBD5002

**Group 1 - \$219**
**Group 2 - \$263**
**Group 3 - \$378**
**Group 4 - \$473**

**COMPRESSION TOILET KIT WITH LEVER HANDLE.**
**TBD541QTL**

1/2 in. Nom. Compression Inlet X 3/8 in. O.D. Compression Outlet

For 1/2 inch Copper Pipe

1/4-Turn Angle Stop Valve with Lever Handle

20 inch Flat Head Toilet Riser and Flange

Includes (1) Each TBD503CQTL, TBD526 and TBD5002

**Group 1 - \$239**
**Group 2 - \$299**
**Group 3 - \$410**
**Group 4 - \$513**

**COMPRESSION TOILET KIT WITH CROSS HANDLE.**
**TBD541QTX**

1/2 in. Nom. Compression Inlet X 3/8 in. O.D. Compression Outlet

For 1/2 inch Copper Pipe

1/4-Turn Angle Stop Valve with Cross Handle

20 inch Flat Head Toilet Riser and Flange

Includes (1) Each TBD503CQTX, TBD526 and TBD5002

**Group 1 - \$239**
**Group 2 - \$299**
**Group 3 - \$410**
**Group 4 - \$513**

**COMPRESSION TOILET KIT WITH  
PORCELAIN INSERT CROSS HANDLE.**
**TBD541QTX-2**

1/2 in. Nom. Compression Inlet X 3/8 in. O.D. Compression Outlet

For 1/2 inch Copper Pipe

1/4-Turn Angle Stop Valve with Porcelain Insert Cross Handle

20 inch Flat Head Toilet Riser and Flange

Supplied with "PLAIN" Porcelain Insert

Includes (1) Each TBD503CQTX-2, TBD526 and TBD5002

**Group 1 - \$285**
**Group 2 - \$338**
**Group 3 - \$443**
**Group 4 - \$554**

**COMPRESSION TOILET KIT WITH OVAL HANDLE.**
**TBD543QT**

1/2 in. Nom. Compression Inlet X 1/2 in. O.D. Compression Outlet

For 1/2 inch Copper Pipe

1/4-Turn Angle Stop Valve with Oval Handle

20 inch Flat Head Toilet Riser and Flange

Includes (1) Each TBD504CQT, TBD528 and TBD5002

**Group 1 - \$311**
**Group 2 - \$337**
**Group 3 - \$399**
**Group 4 - \$499**

**COMPRESSION TOILET KIT WITH LEVER HANDLE.**
**TBD543QTL**

1/2 in. Nom. Compression Inlet X 1/2 in. O.D. Compression Outlet

For 1/2 inch Copper Pipe

1/4-Turn Angle Stop Valve with Lever Handle

20 inch Flat Head Toilet Riser and Flange

Includes (1) Each TBD504CQTL, TBD528 and TBD5002

**Group 1 - \$339**
**Group 2 - \$371**
**Group 3 - \$429**
**Group 4 - \$536**

# Trim By Design



## COMPRESSION TOILET KIT WITH CROSS HANDLE.

**TBD543QTX**

**Group 1 - \$339**

1/2 in. Nom. Compression Inlet X 1/2 in. O.D. Compression Outlet

**Group 2 - \$371**

For 1/2 inch Copper Pipe

**Group 3 - \$429**

1/4-Turn Angle Stop Valve with Cross Handle

**Group 4 - \$536**

20 inch Flat Head Toilet Riser and Flange

Includes (1) Each TBD504CQTX, TBD528 and TBD5002



## COMPRESSION TOILET KIT WITH PORCELAIN INSERT CROSS HANDLE.

**TBD543QTX-2**

**Group 1 - \$364**

1/2 in. Nom. Compression Inlet X 1/2 in. O.D. Compression Outlet

**Group 2 - \$399**

For 1/2 inch Copper Pipe

**Group 3 - \$462**

1/4-Turn Angle Stop Valve with Porcelain Insert Cross Handle

**Group 4 - \$577**

20 inch Flat Head Toilet Riser and Flange

Supplied with "PLAIN" Porcelain Insert

Includes (1) Each TBD504CQTX-2, TBD526 and TBD5002



## I.P.S. TOILET KIT WITH OVAL HANDLE.

**TBD545QT**

**Group 1 - \$244**

1/2 in. Female Inlet X 3/8 in. O.D. Compression Outlet

**Group 2 - \$277**

1/4-Turn Angle Stop Valve with Oval Handle

**Group 3 - \$378**

20 inch Flat Head Toilet Riser and Flange

**Group 4 - \$473**

Includes (1) Each TBD501CQT, TBD526 and TBD200



## I.P.S. TOILET KIT WITH LEVER HANDLE.

**TBD545QTL**

**Group 1 - \$263**

1/2 in. Female Inlet X 3/8 in. O.D. Compression Outlet

**Group 2 - \$313**

1/4-Turn Angle Stop Valve with Lever Handle

**Group 3 - \$410**

20 inch Flat Head Toilet Riser and Flange

**Group 4 - \$513**

Includes (1) Each TBD501CQTL, TBD526 and TBD200



## I.P.S. TOILET KIT WITH CROSS HANDLE.

**TBD545QTX**

**Group 1 - \$263**

1/2 in. Female Inlet X 3/8 in. O.D. Compression Outlet

**Group 2 - \$313**

1/4-Turn Angle Stop Valve with Cross Handle

**Group 3 - \$410**

20 inch Flat Head Toilet Riser and Flange

**Group 4 - \$513**

Includes (1) Each TBD501CQTX, TBD526 and TBD200



## I.P.S. TOILET KIT WITH PORCELAIN INSERT CROSS HANDLE.

**TBD545QTX-2**

**Group 1 - \$285**

1/2 in. Female Inlet X 3/8 in. O.D. Compression Outlet

**Group 2 - \$338**

1/4-Turn Angle Stop Valve with Porcelain Insert Cross Handle

**Group 3 - \$443**

20 inch Flat Head Toilet Riser and Flange

**Group 4 - \$554**

Supplied with "PLAIN" Porcelain Insert

Includes (1) Each TBD501CQTX-2, TBD526 and TBD5002

# Trim By Design


**COMPRESSION TOILET KIT WITH OVAL HANDLE.**
**TBD571QT**

1/2 in. Nom. Compression Inlet X 3/8 in. O.D. Compression Outlet  
 For 1/2 inch Copper Pipe  
 1/4-Turn Straight Stop Valve with Oval Handle  
 20 inch Flat Head Toilet Riser and Flange  
 Includes (1) Each TBD512CQT, TBD526 and TBD5002

**Group 1 - \$244**
**Group 2 - \$307**
**Group 3 - \$370**
**Group 4 - \$463**

**COMPRESSION TOILET KIT WITH LEVER HANDLE.**
**TBD571QTL**

1/2 in. Nom. Compression Inlet X 3/8 in. O.D. Compression Outlet  
 For 1/2 inch Copper Pipe  
 1/4-Turn Straight Stop Valve with Lever Handle  
 20 inch Flat Head Toilet Riser and Flange  
 Includes (1) Each TBD512CQTL, TBD526 and TBD5002

**Group 1 - \$259**
**Group 2 - \$337**
**Group 3 - \$394**
**Group 4 - \$493**

**COMPRESSION TOILET KIT WITH CROSS HANDLE.**
**TBD571QTX**

1/2 in. Nom. Compression Inlet X 3/8 in. O.D. Compression Outlet  
 For 1/2 inch Copper Pipe  
 1/4-Turn Straight Stop Valve with Cross Handle  
 20 inch Flat Head Toilet Riser and Flange  
 Includes (1) Each TBD512CQTLX, TBD526 and TBD5002

**Group 1 - \$259**
**Group 2 - \$337**
**Group 3 - \$394**
**Group 4 - \$493**

**COMPRESSION TOILET KIT WITH PORCELAIN INSERT CROSS HANDLE.**
**TBD571QTX-2**

1/2 in. Nom. Compression Inlet X 3/8 in. O.D. Compression Outlet  
 For 1/2 inch Copper Pipe  
 1/4-Turn Straight Stop Valve with Porcelain Insert Cross Handle  
 20 inch Flat Head Toilet Riser and Flange  
 Supplied with "PLAIN" Porcelain Insert  
 Includes (1) Each TBD512CQTX-2, TBD526 and TBD5002

**Group 1 - \$290**
**Group 2 - \$365**
**Group 3 - \$425**
**Group 4 - \$531**

**COMPRESSION TOILET KIT WITH OVAL HANDLE.**
**TBD541**

1/2 in. Nom. Compression Inlet X 3/8 in. O.D. Compression Outlet  
 For 1/2 inch Copper Pipe  
 Multi-Turn Angle Stop Valve with Oval Handle  
 20 inch Flat Head Toilet Riser and Flange  
 Includes (1) Each TBD503C, TBD526 and TBD5002

**Group 1 - \$184**
**Group 2 - \$238**
**Group 3 - \$305**

**COMPRESSION TOILET KIT WITH CROSS HANDLE.**
**TBD541X**

1/2 in. Nom. Compression Inlet X 3/8 in. O.D. Compression Outlet  
 For 1/2 inch Copper Pipe  
 Multi-Turn Angle Stop Valve with Cross Handle  
 20 inch Flat Head Toilet Riser and Flange  
 Includes (1) Each TBD503CX, TBD526 and TBD5002

**Group 1 - \$209**
**Group 2 - \$271**
**Group 3 - \$334**



# Trim By Design



## **COMPRESSION TOILET KIT WITH OVAL HANDLE.**

**TBD543**

**Group 1 - \$239**

1/2 in. Nom. Compression Inlet X 1/2 in. O.D. Compression Outlet

**Group 2 - \$278**

For 1/2 inch Copper Pipe

**Group 3 - \$318**

Multi-Turn Angle Stop Valve with Oval Handle

20 inch Flat Head Toilet Riser and Flange

Includes (1) Each TBD504C, TBD528 and TBD5002



## **COMPRESSION TOILET KIT WITH CROSS HANDLE.**

**TBD543X**

**Group 1 - \$255**

1/2 in. Nom. Compression Inlet X 1/2 in. O.D. Compression Outlet

**Group 2 - \$297**

For 1/2 inch Copper Pipe

**Group 3 - \$336**

Multi-Turn Angle Stop Valve with Cross Handle

20 inch Flat Head Toilet Riser and Flange

Includes (1) Each TBD504CX, TBD528 and TBD5002



## **I.P.S. TOILET KIT WITH OVAL HANDLE.**

**TBD545**

**Group 1 - \$197**

1/2 in. Female Inlet X 3/8 in. O.D. Compression Outlet

**Group 2 - \$247**

Multi-Turn Angle Stop Valve with Oval Handle

**Group 3 - \$305**

20 inch Flat Head Toilet Riser and Flange

Includes (1) Each TBD501C, TBD526 and TBD200



## **I.P.S. TOILET KIT WITH CROSS HANDLE.**

**TBD545X**

**Group 1 - \$218**

1/2 in. Female Inlet X 3/8 in. O.D. Compression Outlet

**Group 2 - \$271**

Multi-Turn Angle Stop Valve with Cross Handle

**Group 3 - \$334**

20 inch Flat Head Toilet Riser and Flange

Includes (1) Each TBD501CX, TBD526 and TBD200



## **COMPRESSION TOILET KIT WITH OVAL HANDLE.**

**TBD571**

**Group 1 - \$179**

1/2 in. Nom. Compression Inlet X 3/8 in. O.D. Compression Outlet

**Group 2 - \$238**

For 1/2 inch Copper Pipe

**Group 3 - \$295**

Multi-Turn Straight Stop Valve with Oval Handle

20 inch Flat Head Toilet Riser and Flange

Includes (1) Each TBD512C, TBD526 and TBD5002



## **COMPRESSION TOILET KIT WITH CROSS HANDLE.**

**TBD571X**

**Group 1 - \$218**

1/2 in. Nom. Compression Inlet X 3/8 in. O.D. Compression Outlet

**Group 2 - \$257**

For 1/2 inch Copper Pipe

**Group 3 - \$313**

Multi-Turn Straight Stop Valve with Cross Handle

20 inch Flat head Toilet Riser and Flange

Includes (1) Each TBD512CX, TBD526 and TBD5002

# Trim By Design



## 1-1/4 INCH X 1-1/2 INCH SINK KIT.

1/2 in. Female Inlet X 3/8 in. O.D. Compression Outlet  
 1/4-Turn Angle Stop Valve with Oval Handle  
 20 inch Semi Rigid Lavatory Risers, Flanges and P-Trap  
 Includes (2) Each TBD501CQT, TBD521C, TBD200 and  
 (1) Each TBD431

**TBD425CQT**    **Group 1 - \$660**  
**Group 2 - \$789**  
**Group 3 - \$1084**  
**Group 4 - \$1356**



## 1-1/4 INCH X 1-1/2 INCH SINK KIT.

1/2 in. Female Inlet X 3/8 in. O.D. Compression Outlet  
 1/4-Turn Angle Stop Valve with Lever Handle  
 20 inch Semi Rigid Lavatory Risers, Flanges and P-Trap  
 Includes (2) Each TBD501CQTL, TBD521C, TBD200 and  
 (1) Each TBD431

**TBD425CQTL**    **Group 1 - \$690**  
**Group 2 - \$879**  
**Group 3 - \$1148**  
**Group 4 - \$1436**



## 1-1/4 INCH X 1-1/2 INCH SINK KIT.

1/2 in. Female Inlet X 3/8 in. O.D. Compression Outlet  
 1/4-Turn Angle Stop Valve with Cross Handle  
 20 inch Semi Rigid Lavatory Risers, Flanges and P-Trap  
 Includes (2) Each TBD501CQTX, TBD521C, TBD200 and  
 (1) Each TBD431

**TBD425CQTX**    **Group 1 - \$690**  
**Group 2 - \$879**  
**Group 3 - \$1148**  
**Group 4 - \$1436**



## 1-1/4 INCH X 1-1/2 INCH SINK KIT.

1/2 in. Female Inlet X 3/8 in. O.D. Compression Outlet  
 1/4-Turn Angle Stop Valve with Porcelain Insert Cross Handle  
 20 inch Semi Rigid Lavatory Risers, Flanges and P-Trap  
 Supplied with "HOT" and "COLD" Porcelain Inserts  
 Includes (2) Each TBD501CQTX-2, TBD521C, TBD200 and  
 (1) Each TBD431

**TBD425CQTX-2**    **Group 1 - \$752**  
**Group 2 - \$939**  
**Group 3 - \$1214**  
**Group 4 - \$1518**



## 1-1/4 INCH X 1-1/2 INCH SINK KIT.

1/2 in. Nom. Compression Inlet X 3/8 in. O.D. Compression Outlet  
 For 1/2 inch Copper Pipe  
 1/4-Turn Angle Stop Valve with Oval Handle  
 20 inch Semi Rigid Lavatory Risers, Flanges and P-Trap  
 Includes (2) Each TBD503CQT, TBD521C, TBD5002 and  
 (1) Each TBD431

**TBD426CQT**    **Group 1 - \$620**  
**Group 2 - \$789**  
**Group 3 - \$1084**  
**Group 4 - \$1356**

# Trim By Design



## 1-1/4 INCH X 1-1/2 INCH SINK KIT.

**TBD426CQTL**

**Group 1 - \$670**

1/2 in. Nom. Compression Inlet X 3/8 in. O.D. Compression Outlet

**Group 2 - \$879**

For 1/2 inch Copper Pipe

**Group 3 - \$1148**

1/4-Turn Angle Stop Valve with Lever Handle

**Group 4 - \$1436**

20 inch Semi Rigid Lavatory Risers, Flanges and P-Trap

Includes (2) Each TBD503CQTL, TBD521C, TBD5002 and

(1) Each TBD431



## 1-1/4 INCH X 1-1/2 INCH SINK KIT.

**TBD426CQTX**

**Group 1 - \$670**

1/2 in. Nom. Compression Inlet X 3/8 in. O.D. Compression Outlet

**Group 2 - \$879**

For 1/2 inch Copper Pipe

**Group 3 - \$1148**

1/4-Turn Angle Stop Valve with Cross Handle

**Group 4 - \$1436**

20 inch Semi Rigid Lavatory Risers, Flanges and P-Trap

Includes (2) Each TBD503CQTX, TBD521C, TBD5002 and

(1) Each TBD431



## 1-1/4 INCH X 1-1/4 INCH SINK KIT.

**TBD426CQTX-2**

**Group 1 - \$752**

1/2 in. Nom. Compression Inlet X 3/8 in. O.D. Compression Outlet

**Group 2 - \$939**

For 1/2 inch Copper Pipe

**Group 3 - \$1214**

1/4-Turn Angle Stop Valve with Porcelain Insert Cross Handle

**Group 4 - \$1518**

20 inch Semi Rigid Lavatory Risers, Flanges and P-Trap

Supplied with "HOT" & "COLD" Porcelain Inserts

Includes (2) Each TBD503CQTX-2, TBD521C, TBD200 and

(1) Each TBD440



## 1-1/4 INCH X 1-1/4 INCH SINK KIT.

**TBD427CQT**

**Group 1 - \$820**

1/2 in. Nom. Compression Inlet X 3/8 in. O.D. Compression Outlet

**Group 2 - \$944**

For 1/2 inch Copper Pipe

**Group 3 - \$1319**

1/4-Turn Angle Stop Valve with Oval Handle

**Group 4 - \$1651**

20 inch Semi Rigid Lavatory Risers, Flanges and Cylinder Trap

Includes (2) Each TBD503CQT, TBD521C, TBD5002 and

(1) Each TBD440



## 1-1/4 INCH X 1-1/4 INCH SINK KIT.

**TBD427CQTL**

**Group 1 - \$870**

1/2 in. Nom. Compression Inlet X 3/8 in. O.D. Compression Outlet

**Group 2 - \$1064**

For 1/2 inch Copper Pipe

**Group 3 - \$1383**

1/4-Turn Angle Stop Valve with Lever Handle

**Group 4 - \$1731**

20 inch Semi Rigid Lavatory Risers, Flanges and Cylinder Trap

Includes (2) Each TBD503CQTL, TBD521C, TBD5002 and

(1) Each TBD440



# Trim By Design



## 1-1/4 INCH X 1-1/4 INCH SINK KIT.

**TBD427CQTX**

1/2 in. Nom. Compression Inlet X 3/8 in. O.D. Compression Outlet

For 1/2 inch Copper Pipe

1/4-Turn Angle Stop Valve with Cross Handle

20 inch Semi Rigid Lavatory Risers, Flanges and Cylinder Trap

Includes (2) Each TBD503CQTX, TBD521C, TBD5002 and

(1) Each TBD440

**Group 1 - \$870**
**Group 2 - \$1064**
**Group 3 - \$1383**
**Group 4 - \$1731**


## 1-1/4 INCH X 1-1/4 INCH SINK KIT.

**TBD427CQTX-2**

1/2 in. Nom. Compression Inlet X 3/8 in. O.D. Compression Outlet

For 1/2 inch Copper Pipe

1/4-Turn Angle Stop Valve with Porcelain Insert Cross Handle

20 inch Semi Rigid Lavatory Risers, Flanges and P-Trap

Supplied with "HOT" &amp; "COLD" Porcelain Inserts

Includes (2) Each TBD503CQTX-2, TBD521C, TBD200 and

(1) Each TBD440

**Group 1 - \$952**
**Group 2 - \$1114**
**Group 3 - \$1447**
**Group 4 - \$1811**


## 1-1/4 INCH X 1-1/2 INCH SINK KIT.

**TBD425C**

1/2 in. Female Inlet X 3/8 in. O.D. Compression Outlet

Multi-Turn Angle Stop Valve with Oval Handle

20 inch Semi Rigid Lavatory Risers, Flanges and P-Trap

Includes (2) Each TBD501C, TBD521C, TBD200 and

(1) Each TBD431

**Group 1 - \$576**
**Group 2 - \$757**
**Group 3 - \$938**


## 1-1/4 INCH X 1-1/2 INCH SINK KIT.

**TBD425CX**

1/2 in. Female Inlet X 3/8 in. O.D. Compression Outlet

Multi-Turn Angle Stop Valve with Cross Handle

20 inch Semi Rigid Lavatory Risers, Flanges and P-Trap

Includes (2) Each TBD501CX, TBD521C, TBD200 and

(1) Each TBD431

**Group 1 - \$618**
**Group 2 - \$805**
**Group 3 - \$996**


## 1-1/4 INCH X 1-1/2 INCH SINK KIT.

**TBD426C**

1/2 in. Nom. Compression Inlet X 3/8 in. O.D. Compression Outlet

For 1/2 inch Copper Pipe

Multi-Turn Angle Stop Valve with Oval Handle

20 inch Semi Rigid Lavatory Risers, Flanges and P-Trap

Includes (2) Each TBD503C, TBD521C, TBD5002 and

(1) Each TBD431

**Group 1 - \$560**
**Group 2 - \$757**
**Group 3 - \$938**



# Trim By Design



## 1-1/4 INCH X 1-1/2 INCH SINK KIT.

**TBD426CX**

**Group 1 - \$596**

1/2 in. Nom. Compression Inlet X 3/8 in. O.D. Compression Outlet

**Group 2 - \$789**

For 1/2 inch Copper Pipe

**Group 3 - \$996**

Multi-Turn Angle Stop Valve with Cross Handle

20 inch Semi Rigid Lavatory Risers, Flanges and P-Trap

Includes (2) Each TBD503CX, TBD521C, TBD5002 and

(1) Each TBD431



## COMPRESSION LAVATORY KIT WITH OVAL HANDLE.

**TBD550CQT**

**Group 1 - \$420**

1/2 in. Nom. Compression Inlet X 3/8 in. O.D. Compression Outlet

**Group 2 - \$494**

For 1/2 inch Copper Pipe

**Group 3 - \$740**

1/4-Turn Angle Stop Valve with Oval Handle

**Group 4 - \$926**

20 inch Semi Rigid Lavatory Riser and Flange

Includes (2) Each TBD503CQT, TBD521C and TBD5002



## COMPRESSION LAVATORY KIT WITH LEVER HANDLE.

**TBD550CQTL**

**Group 1 - \$460**

1/2 in. Nom. Compression Inlet X 3/8 in. O.D. Compression Outlet

**Group 2 - \$598**

For 1/2 inch Copper Pipe

**Group 3 - \$794**

1/4-Turn Angle Stop Valve with Lever Handle

**Group 4 - \$1006**

20 inch Semi Rigid Lavatory Riser and Flange

Includes (2) Each TBD503CQTL, TBD521C and TBD5002



## COMPRESSION LAVATORY KIT WITH CROSS HANDLE.

**TBD550CQTX**

**Group 1 - \$460**

1/2 in. Nom. Compression Inlet X 3/8 in. O.D. Compression Outlet

**Group 2 - \$598**

For 1/2 inch Copper Pipe

**Group 3 - \$794**

1/4-Turn Angle Stop Valve with Cross Handle

**Group 4 - \$1006**

20 inch Semi Rigid Lavatory Riser and Flange

Includes (2) Each TBD503CQTX, TBD521C and TBD5002



## COMPRESSION LAVATORY KIT WITH PORCELAIN INSERT CROSS HANDLE.

**TBD550CQTX-2**

**Group 1 - \$552**

1/2 in. Nom. Compression Inlet X 3/8 in. O.D. Compression Outlet

**Group 2 - \$664**

For 1/2 inch Copper Pipe

**Group 3 - \$870**

1/4-Turn Angle Stop Valve with Porcelain Insert Cross Handle

**Group 4 - \$1088**

20 inch Semi Rigid Lavatory Risers, Flanges and P-Trap

Supplied with "HOT" & "COLD" Porcelain Inserts

Includes (2) Each TBD503CQTX-2, TBD521C and TBD5002

# Trim By Design


**I.P.S. LAVATORY KIT WITH OVAL HANDLE AND NIPPLE. TBD553CQT**

1/2 in. Female Inlet X 3/8 in. O.D. Compression Outlet

1/4-Turn Angle Stop Valve with Oval Handle

20 inch Semi Rigid Lavatory Riser, 4 inch Nipple and Flange

Includes (2) Each TBD501CQT, TBD521C, TBD612C and TBD200

**Group 1 - \$536**

**Group 2 - \$664**

**Group 3 - \$902**

**Group 4 - \$1124**


**I.P.S. LAVATORY KIT WITH LEVER HANDLE AND NIPPLE. TBD553CQTL**

1/2 in. Female Inlet X 3/8 in. O.D. Compression Outlet

1/4-Turn Angle Stop Valve with Lever Handle

20 inch Semi Rigid Lavatory Riser, 4 inch Nipple and Flange

Includes (2) Each TBD501CQTL, TBD521C, TBD612C and TBD200

**Group 1 - \$576**

**Group 2 - \$744**

**Group 3 - \$966**

**Group 4 - \$1204**


**I.P.S. LAVATORY KIT WITH CROSS HANDLE AND NIPPLE. TBD553CQTX**

1/2 in. Female Inlet X 3/8 in. O.D. Compression Outlet

1/4-Turn Angle Stop Valve with Cross Handle

20 inch Semi Rigid Lavatory Riser, 4 inch Nipple and Flange

Includes (2) Each TBD501CQTX, TBD521C, TBD612C and TBD200

**Group 1 - \$576**

**Group 2 - \$744**

**Group 3 - \$966**

**Group 4 - \$1204**


**I.P.S. LAVATORY KIT WITH**
**PORCELAIN INSERT CROSS HANDLE AND NIPPLE.**
**TBD553CQTX-2**

1/2 in. Female Inlet X 3/8 in. O.D. Compression Outlet

1/4-Turn Angle Stop Valve with Cross Handle

20 inch Semi Rigid Lavatory Riser, 4 inch Nipple and Flange

Supplied with "HOT" & "COLD" Porcelain Inserts

Includes (2) Each TBD501CQTX-2, TBD521C, TBD612C and TBD200

**Group 1 - \$638**

**Group 2 - \$804**

**Group 3 - \$1032**

**Group 4 - \$1286**


**COMPRESSION LAVATORY KIT WITH OVAL HANDLE.**
**TBD550C**

1/2 in. Nom. Compression Inlet X 3/8 in. O.D. Compression Outlet

For 1/2 inch Copper Pipe

Multi-Turn Angle Stop Valve with Oval Handle

20 inch Semi Rigid Lavatory Riser and Flange

Includes (2) Each TBD503C, TBD521C and TBD5002

**Group 1 - \$360**

**Group 2 - \$464**

**Group 3 - \$594**

# Trim By Design



## **COMPRESSION LAVATORY KIT WITH CROSS HANDLE.    TBD550CX**

1/2 in. Nom. Compression Inlet X 3/8 in. O.D. Compression Outlet

For 1/2 inch Copper Pipe

Multi-Turn Angle Stop Valve with Cross Handle

20 inch Semi Rigid Lavatory Riser and Flange

Includes (2) Each TBD503CX, TBD521C and TBD5002

**Group 1 - \$390**

**Group 2 - \$514**

**Group 3 - \$652**



## **I.P.S. LAVATORY KIT WITH OVAL HANDLE AND NIPPLE.    TBD553C**

1/2 in. Female Inlet X 3/8 in. O.D. Compression Outlet

Multi-Turn Angle Stop Valve with Oval Handle

20 inch Semi Rigid Lavatory Riser, 4 inch Nipple and Flange

Includes (2) Each TBD501C, TBD521C, TBD612C and TBD200

**Group 1 - \$462**

**Group 2 - \$622**

**Group 3 - \$756**



## **I.P.S. LAVATORY KIT WITH CROSS HANDLE AND NIPPLE.    TBD553CX**

1/2 in. Female Inlet X 3/8 in. O.D. Compression Outlet

Multi-Turn Angle Stop Valve with Cross Handle

20 inch Semi Rigid Lavatory Riser, 4 inch Nipple and Flange

Includes (2) Each TBD501CX, TBD521C, TBD612C and TBD200

**Group 1 - \$496**

**Group 2 - \$670**

**Group 3 - \$814**

## Trim By Design



**FRONT MOUNT STANDARD TOILET TANK LEVER.**  
Solid Brass Construction

**TBD600**  
**Group 1 - \$75**  
**Group 2 - \$99**  
**Group 3 - \$111**  
**Group 4 - \$139**



**KOHLER TYPE TANK LEVER.**  
Fits Cimarron & Memoirs Toilets

**TBD6011**  
**Group 1 - \$35**  
**Group 2 - \$49**  
**Group 3 - \$58**  
**Group 4 - \$73**



**TOTO TYPE TANK LEVER.**  
Fits Toto Ultramax, Carolina & Ultimax Toilets

**TBD602**  
**Group 1 - \$39**  
**Group 2 - \$79**  
**Group 3 - \$90**  
**Group 4 - \$113**



**TOTO TYPE TANK LEVER.**  
Fits Toto Bristol, Drake & Vespini Toilets

**TBD6021**  
**Group 1 - \$39**  
**Group 2 - \$79**  
**Group 3 - \$90**  
**Group 4 - \$113**



**SIDE MOUNT TANK LEVER.**  
Fits Toto Promenade, Dartmouth, Carrolton & Whitney Toilets  
Solid Brass Construction

**TBD6022**  
**Group 1 - \$99**  
**Group 2 - \$149**  
**Group 3 - \$169**  
**Group 4 - \$211**



**FRONT MOUNT TRADITIONAL TOILET TANK LEVER.**  
Solid Brass Construction

**TBD603**  
**Group 1 - \$99**  
**Group 2 - \$149**  
**Group 3 - \$169**  
**Group 4 - \$211**



# Trim By Design



**MULTI-FUNCTION TRADITIONAL TANK LEVER.**  
Front and/or Side Mount  
Solid Brass Construction

**TBD605**  
**Group 1 - \$99**  
**Group 2 - \$149**  
**Group 3 - \$169**  
**Group 4 - \$211**



**1/2 INCH X 4 INCH BRASS NIPPLE.**  
Lead Free Brass Construction

**TBD612C**  
**Group 1 - \$43**  
**Group 2 - \$70**  
**Group 3 - \$81**  
**Group 4 - \$99**



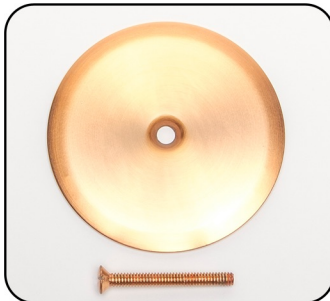
**1/2 INCH X 6 INCH BRASS NIPPLE.**  
Lead Free Brass Construction

**TBD613C**  
**Group 1 - \$59**  
**Group 2 - \$85**  
**Group 3 - \$101**  
**Group 4 - \$126**



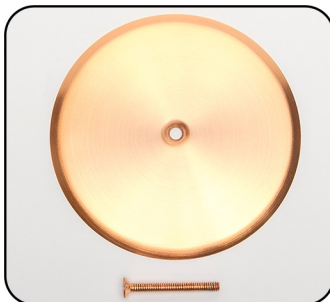
**LOG LIGHTER FLANGE AND KEY.**  
3/4 inch Female Inlet Flange  
5/16 in. x 3 in. Key  
Solid Brass Construction

**TBD700**  
**Group 1 - \$99**  
**Group 2 - \$119**  
**Group 3 - \$149**  
**Group 4 - \$186**



**4 INCH O.D. CLEANOUT COVER WITH SCREW.**  
1/4-20 X 2 in. Long Screw

**TBD715**  
**Group 1 - \$35**  
**Group 2 - \$69**  
**Group 3 - \$89**



**6 INCH O.D. CLEANOUT COVER WITH SCREW.**  
1/4-20 X 2 in. Long Screw

**TBD716**  
**Group 1 - \$45**  
**Group 2 - \$85**  
**Group 3 - \$125**

# Trim By Design



## RECESSED TOILET PAPER HOLDER.

Spring Loaded Brass Roller  
Includes Wall Mount Clamp  
Solid Brass Construction

**TBD805**

**Group 1 - \$225**

**Group 2 - \$249**

**Group 3 - \$299**



## 1-HOLE OVAL REMODELING COVER PLATE.

5 inch Hole Opening  
Includes Screws and Brackets

**TBD824**

**Group 1 - \$139**

**Group 2 - \$259**

**Group 3 - POA**



## 1-HOLE REMODELING COVER PLATE.

5 inch Hole Opening  
Includes Screws and Brackets

**TBD825**

**Group 1 - \$110**

**Group 2 - \$229**

**Group 3 - POA**



## 10 INCH FAUCET DECK COVER PLATE.

10 inch Width X 2-1/2 inch Depth  
Used to Cover 8 inch Faucet Holes  
1-1/2 inch Opening  
Solid Brass Construction

**TBD830**

**Group 1 - \$125**

**Group 2 - \$139**

**Group 3 - \$166**



## 6 INCH FAUCET DECK COVER PLATE.

6 inch Width X 2-7/16 inch Depth  
Used to Cover 4 inch Faucet Holes  
1-1/2 inch Opening  
Solid Brass Construction

**TBD832**

**Group 1 - \$89**

**Group 2 - \$99**

**Group 3 - \$116**

# Trim By Design

## **One-Year Functionality Warranty**

Trim By Design, Inc. products are warranted to be free of defects in material and workmanship for one (1) year from date of purchase by the original purchaser. The warranty is not transferable and extended solely to the original purchaser of the product(s). Products must be installed in accordance with the Trim By Design installation instructions provided with the products.

You may call 323-722-4233 or email us at [sales@trimbydesign.com](mailto:sales@trimbydesign.com) for copies of the installation instructions.

Trim By Design will, at its option, either repair, credit or provide one-time product replacement with the same or similar current model of the product. If repair or replacement is not commercially practical or cannot be made in a timely manner, then Trim By Design will provide a credit for the product.

See Exclusions from Coverage below.

## **Drainage and Strainer Finish Limited Warranty**

Polished Chrome (26) and PVD finishes for kitchen sink strainers, disposal flanges, disposal stoppers, bar strainers, basket strainers including bath and lavatory drains and components are warranted for one (1) year from the date that the product is received by the original purchaser or their authorized distributor.

Products must be installed in accordance with the Trim By Design installation instructions provided with the products.

All other finishes have no warranty.

## **Product Finish Limited Warranty**

Trim By Design warrants all finishes to be free of defects in material and workmanship during normal residential usage to the "original purchaser" for ten (10) years from the date the product is received by the original purchaser.

Uncoated finishes such as Polished Brass Uncoated (03N), do naturally weather and change color over time are not warranted.

See Exclusions from Coverage below.

## **Commercial Warranty**

Trim By Design warrants its products installed in an industrial, commercial application business use upon the same terms and conditions and exclusions applied to residential users to be free of defects in material, finishes (including PVD) and workmanship with the exception that warranty periods are reduced to one (1) year from date that the product is received by the original purchaser or their authorized distributor.

## **Maintenance and Product Care**

Proper maintenance and care is required to preserve all finishes. Failure to properly maintain the product finish may void the product warranty. Abrasive material such as a brush, scouring pad or cleaning products that contain ammonia, bleach, detergents or alcohol on the product should not be used. Using brass or silver polish on products may result in damage to the finish and should not be used. Products may periodically be cleaned or waxed with non-abrasive compounds, such as Flitz or Faucet Brite.

Always test cleaning solution on an inconspicuous area before applying to the entire surface. For complete care requirements and recommendations, please visit our website at [www.trimbydesign.com](http://www.trimbydesign.com)

See Exclusions from Coverage below.

## **Exclusions from Coverage**

Trim By Design shall have no obligation under this warranty for leaks or damages caused by abuse, improper installation, temperatures below 41 degrees and above 140 degrees Fahrenheit, water pressure over 125 psi and Acts of Nature or Force Majeure. This Warranty does not cover labor charges, installation or other incidental or consequential cost or damages occurring during the removal, transportation, return or installation of Products or replacement Products. Products sold to distributors for display use are not meant for resale and are not covered under any functional or finish warranty.

Some states do not allow exclusion of limitations of incidental or consequential damages, so the above limitation may not apply to you.

# TBD

## TRIM BY DESIGN

DECORATIVE TRIM & ACCESSORIES  
Catalog/Price List 2026

P.O. Box 227278  
Los Angeles, Ca 90022  
tel: (888) TBD-TRIM (823-8746)  
fax: (877) 329-8746  
sales@TrimByDesign.com  
www.TrimByDesign.com

This catalog was designed and printed in the USA.

